

## 8790 HMC Deep socket with 1/2" drive, 18 x 83 mm

Innovations and Autumn/Winter Campaign 2019/2020



<b>EAN:</b>	4013288210647	<b>Size:</b>	150x44x30 mm
<b>Part number:</b>	05004558001	<b>Weight:</b>	169 g
<b>Article number:</b>	8790 HMC Deep	<b>Country of origin:</b>	TW
		<b>Customs tariff number:</b>	82042000

- Long sockets for low-lying screwdriving, often even with protruding threaded rods in small spaces
- Hexagonal profile enables precise bolting with high power transmission and preserves the profile
- With Take it easy tool finder: colour coding by size
- Knurling at lower end to enable easy gripping when used in manual applications
- For manual and machine operation (non-impact), ball intercept ring

Long 1/2" hand and machine socket (ISO 2725 part 3) with ball intercept ring; for external hexagonal bolts and sockets. For use in manual and machine operation (non-impact), even with low-lying screwdriving and protruding threaded rods. With Take it easy tool finder with colour coding by size - for easy and fast location of the required tool. Easy to grasp even with oily hands. The hexagon profile allows the transmission of high forces and puts less strain on the edges of bolts or screw heads than a double hexagon profile. Fine-toothed ratchets also make the use of a double hexagon profile superfluous, even in confined spaces, thanks to their small back-pivoting angle.

### Web link

[https://products.wera.de/en/zyklop\\_ratchets\\_and\\_accessories\\_the\\_zyklop\\_ratchets\\_the\\_zyklop\\_ratchets\\_1\\_2\\_zyklop\\_accessories\\_1\\_2\\_8790\\_hmc\\_deep.html](https://products.wera.de/en/zyklop_ratchets_and_accessories_the_zyklop_ratchets_the_zyklop_ratchets_1_2_zyklop_accessories_1_2_8790_hmc_deep.html)

Wera - 8790 HMC Deep  
05004558001 - 4013288210647

Wera Werkzeuge GmbH  
Korzter Straße 21-25  
D-42349 Wuppertal  
Tel: +49 (0)2 02 / 40 45-0  
E-Mail: [info@wera.de](mailto:info@wera.de)

**Long design**

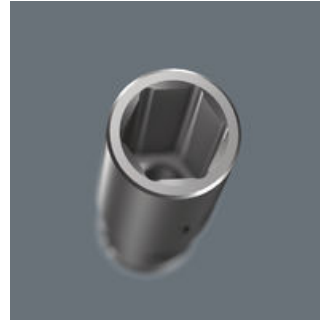


Long design



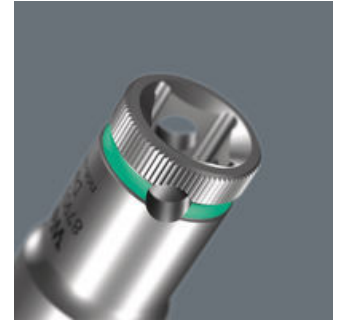
Due to the long design of the socket, screwdriving can also be achieved in small spaces. Fittings with protruding threaded rods are often also possible.

**Profile-friendly power transmission**



The hexagon profile allows the transmission of high forces and puts less strain on the edges of bolts or screw heads than a double hexagon profile. Fine-toothed ratchets also make the use of a double hexagon profile superfluous, even in confined spaces, thanks to their small back-pivoting angle.

**Knurling**



Knurling on lower end for more grip when used manually

**Chrome vanadium steel**



The chrome-vanadium steel version makes the plug-in tools suitable for heavy loads.

**Take it easy tool finder system**



Take it easy tool finder system - with profile and size colour-coding for quick and easy tool selection. Colour-coded system for hexagon drive screws (L-Keys, Zyklus bit sockets), external hex drive screws and nuts (Joker wrenches, Zyklus sockets and Zyklus bit sockets with holding function), and TORX® drive screws (L-Keys, Zyklus bit sockets).



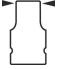

**Web link**

[https://products.wera.de/en/zyklus\\_ratchets\\_and\\_accessories\\_the\\_zyklus\\_ratchets\\_the\\_zyklus\\_ratchets\\_1\\_2\\_zyklus\\_accessories\\_1\\_2\\_8790\\_hmc\\_deep.html](https://products.wera.de/en/zyklus_ratchets_and_accessories_the_zyklus_ratchets_the_zyklus_ratchets_1_2_zyklus_accessories_1_2_8790_hmc_deep.html)

Wera - 8790 HMC Deep  
05004558001 - 4013288210647

Wera Werkzeuge GmbH  
Korzter Straße 21-25  
D-42349 Wuppertal  
Tel: +49 (0)2 02 / 40 45-0  
E-Mail: info@wera.de

## Further versions in this product family:

					
		mm	mm	mm	mm
05004550001	leuchtgelb	10.0	83	15.5	21.8
05004551001	cyan	11.0	83	16.7	22.0
05004552001	schwarz	12.0	83	18.0	22.0
05004553001	tuerkis	13.0	83	19.2	22.0
05004554001	pink	14.0	83	20.5	22.0
05004555001	weiss	15.0	83	22.0	20.7
05004556001	violett	16.0	83	22.0	20.7
05004557001	rot	17.0	83	24.0	22.2
<b>05004558001</b>	<b>leuchtgruen</b>	<b>18.0</b>	<b>83</b>	<b>26.0</b>	<b>23.2</b>
05004559001	blau	19.0	83	26.0	23.2
05004560001	leuchtpink	20.0	83	28.0	25.2
05004561001	gruen	21.0	83	28.0	25.2
05004562001	gelb	22.0	83	30.0	27.2
05004563001	cyan	24.0	83	32.0	28.2

## Web link

[https://products.wera.de/en/zyklop\\_ratchets\\_and\\_accessories\\_the\\_zyklop\\_ratchets\\_the\\_zyklop\\_ratchets\\_1\\_2\\_zyklop\\_accessories\\_1\\_2\\_8790\\_hmc\\_deep.html](https://products.wera.de/en/zyklop_ratchets_and_accessories_the_zyklop_ratchets_the_zyklop_ratchets_1_2_zyklop_accessories_1_2_8790_hmc_deep.html)

Wera - 8790 HMC Deep  
05004558001 - 4013288210647

Wera Werkzeuge GmbH  
Korzter Straße 21-25  
D-42349 Wuppertal  
Tel: +49 (0)2 02 / 40 45-0  
E-Mail: info@wera.de

## **X-ON Electronics**

Largest Supplier of Electrical and Electronic Components

*Click to view similar products for [Screwdrivers, Nut Drivers & Socket Drivers](#) category:*

*Click to view products by [Wera](#) manufacturer:*

Other Similar products are found below :

[1406504-2](#) [272012M](#) [271001M](#) [30246](#) [HMM-HH](#) [32024](#) [TL10416](#) [612020B](#) [35-045](#) [6951](#) [83](#) [9977](#) [EMF](#) [99833](#) [RB1](#) [S3166V](#) [X103V](#)  
[XTD10TP](#) [X108N](#) [HS7N](#) [HS618N](#) [LN25MMN](#) [HS18N](#) [P4N](#) [R146N](#) [P12SN](#) [R5324N](#) [99764N](#) [P8N](#) [99312N](#) [R3163N](#) [SX101N](#) [LN22N](#)  
[XTD10N](#) [9955MMN](#) [995MMN](#) [996MMN](#) [LN25N](#) [THS9N](#) [R3166N](#) [R144N](#) [RB2N](#) [HS10N](#) [99964BPN](#) [HS11N](#) [HS12N](#) [THS8N](#) [TL12N](#)  
[LN23BPN](#) [R5168N](#)