

160 i VDE Insulated screwdriver for slotted screws, 1.2 x 6.5 x 150 mm

Kraftform Plus – Series 100 VDE



EAN:	4013288027276	Size:	255x37x37 mm
Part number:	05006125001	Weight:	94 g
Article number:	160 i VDE	Country of origin:	CZ
		Customs tariff number:	82054000

- Insulated blades for secure work at 1,000 volts
- Smooth hard zones for high speed turning, soft grip zones for high torque transfer
- Take it easy tool finder: colour coding according to profile and size
- Hexagonal anti-roll feature against rolling away
- Conical blade, Lasertip

Wera VDE screwdrivers with multi-component Kraftform Plus handle for fast and low-fatigue working: hard gripping zones for high working speeds whereas soft zones ensure high torque transfer. Individually tested at 10,000 volts for secure work at the permissible voltage of 1,000 volts. The tips of the Wera Lasertip screwdrivers are microscopically roughened by laser beams. This rough surface literally bites into the head of the screw. Any unintentional slipping out is therefore a thing of the past. "Take it easy" tool finder with colour coding according to profiles and size stamp – for simple and rapid accessing of the required tool. The hexagonal anti-roll feature prevents any bothersome rolling away at the workplace.



Web link

https://products.wera.de/en/tools_for_electricians_kraftform_plus_series_100_vde_160_i_vde.html

Wera - 160 i VDE
05006125001 - 4013288027276

Wera Werkzeuge GmbH
Korzter Straße 21-25
D-42349 Wuppertal
Tel: +49 (0)2 02 / 40 45-0
E-Mail: info@wera.de

Kraftform Plus – Series 100 VDE

Individually tested



The individual testing at 10,000 volts, in accordance with IEC 60900, ensures safe working with loads up to 1,000 volts.



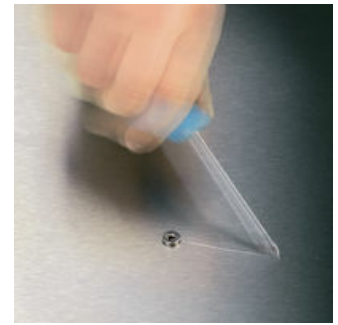
The individual testing at 10,000 volts, in accordance with IEC 60900, ensures safe working with loads up to 1,000 volts.

Impact strength test



Impact strength tested at -40°C, guaranteeing safety even under extreme conditions.

Lasertip prevents slipping out



It happens time and time again that the tip slips out of the screw head when screwdriving, sometimes damaging valuable surfaces or even causing injury. The tips of the Wera Lasertip screwdrivers are microscopically roughened by means of a laser. This rough surface literally "bites" itself firmly into the screw head. Slipping out becomes a thing of the past.

Reduced contact pressure



Wera Lasertip reduces the contact pressure required and enhances force transfer – meaning less screwdriving effort is required. Screwdriving becomes safer and easier.

Prevents hand injuries



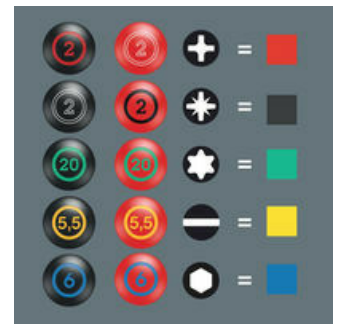
The outstanding design of the Kraftform handle that fits perfectly into the hand prevents hand injuries such as blisters and calluses.

Rapid hand repositioning



The hard materials used for the handle ensure rapid hand repositioning without any danger of the skin "sticking" to the handle. The surrounding hard zones with large diameters glide like wheels across the hand.

"Take it easy" Tool Finder



Screwdrivers with "Take it easy" tool finder: colour coding according to profile and size stamp.




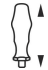


Web link

https://products.wera.de/en/tools_for_electricians_kraftform_plus_series_100_vde_160_i_vde.html

Wera - 160 i VDE
05006125001 - 4013288027276

Wera Werkzeuge GmbH
Korzter Straße 21-25
D-42349 Wuppertal
Tel: +49 (0)2 02 / 40 45-0
E-Mail: info@wera.de

Further versions in this product family:

	 mm	 mm	 mm	 mm	 inch	 inch
05006100001 ¹⁾	0.4	2.5	80	81	3/32	3 1/8
05006105001 ¹⁾	0.5	3.0	100	81	1/8	4
05006110001	0.6	3.5	100	81	9/64	4
05006115001	0.8	4.0	100	98	5/32	4
05006116001	0.8	4.0	150	98	5/32	6
05006120001	1.0	5.5	125	98	7/32	5
05006121001	1.0	5.5	200	98	7/32	8
05006125001	1.2	6.5	150	105	1/4	6
05006126001	1.2	6.5	200	105	1/4	8
05006130001	1.2	8.0	175	112	5/16	7
05006135001	1.6	8.0	200	112	5/16	8
05006140001	1.6	10.0	200	112	3/8	8

1) without Lasertip

Web link

https://products.wera.de/en/tools_for_electricians_kraftform_plus_series_100_vde_160_i_vde.html

Wera - 160 i VDE

05006125001 - 4013288027276

Wera Werkzeuge GmbH

Korzter Straße 21-25

D-42349 Wuppertal

Tel: +49 (0)2 02 / 40 45-0

E-Mail: info@wera.de

X-ON Electronics

Largest Supplier of Electrical and Electronic Components

Click to view similar products for [Screwdrivers, Nut Drivers & Socket Drivers](#) category:

Click to view products by [Wera](#) manufacturer:

Other Similar products are found below :

[272012M](#) [27850](#) [CE-16-03400-00-HNDLE-TORQ](#) [323451-000](#) [HMM-HH](#) [WUVT-1-120AC-P](#) [00-8987-YWPP](#) [32024](#) [XW4Z-00B](#)
[49-22-4073](#) [96025](#) [96030](#) [96560](#) [96430](#) [31830](#) [92270](#) [96012](#) [96436](#) [96536](#) [92064](#) [72820](#) [96520](#) [92040](#) [96416](#) [96570](#) [72823](#) [96525](#) [96720](#)
[31832](#) [92020](#) [96523](#) [96510](#) [96427](#) [92073](#) [92052](#) [72905](#) [72741](#) [72663](#) [32061](#) [30751](#) [130203/TA](#) [KLEIN TOOLS SCREWDRIVER 4-IN-1](#)
[612020B](#) [35-045](#) [6951](#) [83](#) [9058](#) [9977](#) [EMF](#) [PTE6](#)