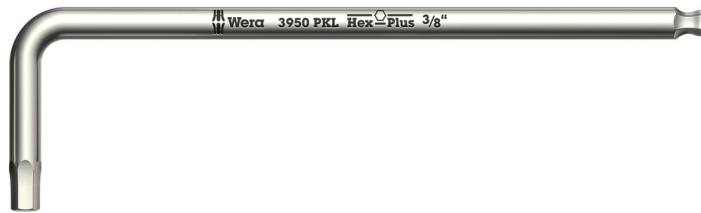


## 3950 PKL L-key, Imperial, stainless, 3/8" x 224 mm

### L-Keys for Hexagon Socket Screws



<b>EAN:</b>	4013288117236	<b>Size:</b>	224x42x12 mm
<b>Part number:</b>	05022718001	<b>Weight:</b>	225 g
<b>Article number:</b>	3950 PKL inch	<b>Country of origin:</b>	CZ
		<b>Customs tariff number:</b>	82041100

- Solution to the extraneous rust problem: fasten stainless screws with stainless tools
- For socket head screws
- Hex-Plus allows socket head screws to live longer
- Hexagonal ballpoint on the long arm
- Imperial

High quality L-keys out of stainless steel for imperial hexagonal socket screws by Wera. Stainless steel prevents the formation of extraneous rust. The Hex-Plus profile offers a larger contact surface within the screw head. This reduces the notching effects to a minimum and almost completely eliminates the risk of destroying the screw recess. Hexagonal ballpoint end on the long arm: the ballpoint drive profile means that it is possible to swivel the tool axis away from the screwdriving axis, thus enabling "round the corner" screwdriving.

#### Web link

[https://products.wera.de/en/l-keys\\_l-keys\\_for\\_hexagon\\_socket\\_screws\\_3950\\_pkl\\_inch.html](https://products.wera.de/en/l-keys_l-keys_for_hexagon_socket_screws_3950_pkl_inch.html)

Wera - 3950 PKL inch  
05022718001 - 4013288117236

Wera Werkzeuge GmbH  
Korzter Straße 21-25  
D-42349 Wuppertal  
Tel: +49 (0)2 02 / 40 45-0  
E-Mail: [info@wera.de](mailto:info@wera.de)

## L-Keys for Hexagon Socket Screws

### Stainless L-keys



Stainless L-keys are hardened to the same strength as conventional (carbon) steel tools, and prevent extraenous rust forming.

### Vacuum ice-hardened



The stainless steel tools from Wera are vacuum ice-hardened and have the hardness and strength needed for screw connections. There are no limitations to the industrial applications they are suitable for.

### Hex-Plus



Hexagon screws can endure a problem because the contact surfaces delivering the power from the conventional tool, is transferred to the screw via very small surface areas. The consequence: the screw can become damaged (rounding out). Hex-Plus tools have a greater contact surface that prevents this from happening! At the same time, as much as 20 % more torque can be applied. Good to know: Hex-Plus tools fit into every standard hexagon socket screw!

### Ball tip



The spherical drive profile means that it is possible to swivel the axis of the tool to that of the screw, and therefore enable angled, "around-the-corner" screwdriving jobs.

## Size identification



The size of each L-keys has been engraved by a laser. In addition Take it easy L-keys have a colour coding according to sizes - for simple and rapid accessing of the required tool. Making it easy to find the right tool.

### Web link






[https://products.wera.de/en/l-keys\\_l-keys\\_for\\_hexagon\\_socket\\_screws\\_3950\\_pkl\\_inch.html](https://products.wera.de/en/l-keys_l-keys_for_hexagon_socket_screws_3950_pkl_inch.html)

Wera - 3950 PKL inch  
05022718001 - 4013288117236

Wera Werkzeuge GmbH  
Korzter Straße 21-25  
D-42349 Wuppertal  
Tel: +49 (0)2 02 / 40 45-0  
E-Mail: [info@wera.de](mailto:info@wera.de)

L-Keys for Hexagon Socket Screws

Further versions in this product family:

	 inch	 mm	 mm	 inch	 inch
05022710001	3/32	112	19	4 7/16	3/4
05022711001	7/64	119	20	4 3/4	25/32
05022712001	1/8	123	21	4 7/8	27/32
05022713001	9/64	130	22	5 3/16	29/32
05022714001	5/32	137	24	5 3/8	1
05022715001	3/16	154	27	6 1/16	1 1/16
05022716001	1/4	185	34	7 1/4	1 5/16
05022717001	5/16	195	37	7 11/16	1 7/16
<b>05022718001</b>	<b>3/8</b>	<b>224</b>	<b>42</b>	<b>9</b>	<b>1 11/16</b>

Web link

[https://products.wera.de/en/l-keys\\_l-keys\\_for\\_hexagon\\_socket\\_screws\\_3950\\_pkl\\_inch.html](https://products.wera.de/en/l-keys_l-keys_for_hexagon_socket_screws_3950_pkl_inch.html)

Wera - 3950 PKL inch  
05022718001 - 4013288117236

Wera Werkzeuge GmbH  
Korzter Straße 21-25  
D-42349 Wuppertal  
Tel: +49 (0)2 02 / 40 45-0  
E-Mail: info@wera.de

## X-ON Electronics

Largest Supplier of Electrical and Electronic Components

*Click to view similar products for [Tool Kits & Cases](#) category:*

*Click to view products by [Wera](#) manufacturer:*

Other Similar products are found below :

[217434-1](#) [4263](#) [1055420-1](#) [11-18-3023](#) [63860-8170](#) [856600-2](#) [690372163](#) [11-40-3247](#) [63883-2870](#) [63885-0270](#) [63901-5670](#) [63866-1070](#)  
[63863-5070](#) [63892-7370](#) [11-18-3209](#) [63860-4070](#) [63881-0970](#) [A0403641](#) [11-18-3040](#) [63865-2070](#) [63910-1470](#) [63861-5070](#) [63850-7470](#)  
[11-18-3201](#) [63910-7570](#) [FM 0501 146](#) [63883-0670](#) [63830-0070](#) [63902-9170](#) [11-18-3147](#) [11-18-3079](#) [63883-2670](#) [63900-1770](#) [11-18-3190](#)  
[63851-1070](#) [63912-4770](#) [63911-5270](#) [63895-1070](#) [63860-1470](#) [63850-6070](#) [1-69411-3](#) [63852-9270](#) [63802-6270](#) [63902-4870](#) [11-18-3202](#)  
[63852-9170](#) [63850-1070](#) [63830-0170](#) [63910-2870](#) [11-18-3010](#)