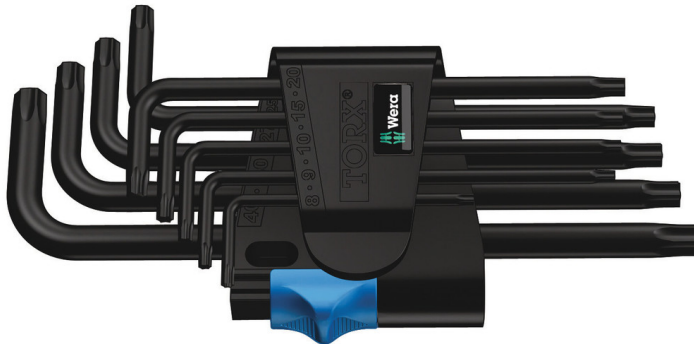


L-Keys for TORX® Screws



EAN:	4013288104953	Size:	139x72x25 mm
Part number:	05024244001	Weight:	195 g
Article number:	967/9 TX HF 1	Country of origin:	CZ
		Customs tariff number:	82041100

- L-keys for recessed TORX® screws
- Holding function for recessed TORX® screws
- BlackLaser for high corrosion protection and long service life
- L-keys are quickly to hand thanks to their size markings
- Wear-resistant clip material for enhanced durability

High quality L-key set for recessed TORX® screws. Holding function: the wedging forces resulting from the contact pressure between the drive tip and the screw profile securely hold the screw on the tool. Featuring an extra-long arm. The BlackLaser surface treatment provides outstanding surface protection, even against corrosion, and a long service life. The tools are quickly to hand thanks to the laser-engraved and thereby wear-resistant size markings on the L-keys. Come in a practical clip fastener out of wear-resistant material, enabling secure storage of the L-keys as well as simple removal.

Web link

https://products.wera.de/en/l-keys_l-keys_for_torx_screws_967_9_tx_hf_1.html

Wera - 967/9 TX HF 1
05024244001 - 4013288104953

Wera Werkzeuge GmbH
Korzter Straße 21-25
D-42349 Wuppertal
Tel: +49 (0)2 02 / 40 45-0
E-Mail: info@wera.de

L-Keys for TORX® Screws

Set contents:



967 L TORX® HF

05024160001	1 x TX 8 x 76 mm
05024161001	1 x TX 9 x 79 mm
05024162001	1 x TX 10 x 85 mm
05024163001	1 x TX 15 x 90 mm
05024164001	1 x TX 20 x 96 mm
05024165001	1 x TX 25 x 104 mm
05024166001	1 x TX 27 x 112 mm
05024167001	1 x TX 30 x 122 mm
05024168001	1 x TX 40 x 132 mm

TORX® HF profile



In tight assembly or disassembly situations, for example in engine compartments, it is not possible to securely hold the screw with the hand on the screwdriver, and the screw subsequently often gets lost. Lengthy searches or the loss of the screw (with the associated danger that could bring about) are the consequence. The HF tools developed by Wera are ideal because they feature an optimised geometry of the original TORX® profile. The wedging forces resulting from the surface pressure between the drive tip and the screw profile mean that the screw is securely held on the tool!

Size identification



The size of each L-keys has been engraved by a laser. In addition Take it easy L-keys have a colour coding according to sizes – for simple and rapid accessing of the required tool. Making it easy to find the right tool.

Surface protection



L-keys with BlackLaser surface treatment for outstanding surface protection and long service life. High corrosion protection.

Secure hold and easy removal



The wear-resistant clip material ensures that the L-keys are securely held yet are easy to remove.

Web link

https://products.wera.de/en/l-keys_l-keys_for_torx_screws_967_9_tx_hf_1.html

Wera - 967/9 TX HF 1
05024244001 - 4013288104953

Wera Werkzeuge GmbH
Korzter Straße 21-25
D-42349 Wuppertal
Tel: +49 (0)2 02 / 40 45-0
E-Mail: info@wera.de

X-ON Electronics

Largest Supplier of Electrical and Electronic Components

Click to view similar products for [Tool Kits & Cases](#) category:

Click to view products by [Wera](#) manufacturer:

Other Similar products are found below :

[217434-1](#) [4263](#) [1055420-1](#) [11-18-3023](#) [63902-3270](#) [63860-8170](#) [856600-2](#) [690372163](#) [11-40-3247](#) [63883-2870](#) [63885-0270](#) [63901-5670](#)
[63866-1070](#) [63863-5070](#) [63892-7370](#) [11-18-3209](#) [63860-4070](#) [63881-0970](#) [A0403641](#) [11-18-3040](#) [63865-2070](#) [63910-1470](#) [63861-5070](#)
[63850-7470](#) [11-18-3201](#) [63910-7570](#) [FM 0501 146](#) [63883-0670](#) [63830-0070](#) [63902-9170](#) [11-18-3147](#) [11-18-3079](#) [63883-2670](#) [63900-1770](#)
[11-18-3190](#) [63851-1070](#) [63912-4770](#) [63911-5270](#) [63895-1070](#) [63860-1470](#) [63850-6070](#) [1-69411-3](#) [63852-9270](#) [63802-6270](#) [63902-4870](#)
[11-18-3202](#) [63852-9170](#) [63850-1070](#) [63830-0170](#) [63910-2870](#)