



EAN:	4013288172723	Size:	110x25x6 mm
Part number:	05024355001	Weight:	19 g
Article number:	967 SPKL TORX® B0 Multicolour	Country of origin:	CZ
		Customs tariff number:	82041100

- L-key for TORX® socket screws with safety pin
- TORX® ballpoint on the long arm
- Colour coded, easy-to-grip plastic sleeve, even at low temperatures
- Wear-resistant size marking
- BlackLaser for high corrosion protection and long service life

Wera L-keys with finger-protecting plastic sleeves. This means they are ergonomic and pleasant to grip even in cold temperatures. At one end a TORX® B0 profile: the bore hole in the bit and safety pin in the TORX® B0 screw prevents any unauthorised loosening. Tamperproof fastening! The ballpoint on the long arm allows dependable working on TORX® screws even in difficult installation situations. The BlackLaser surface treatment provides outstanding surface protection, even against corrosion, and a long service life. Laser-engraved and thereby wear-resistant size markings on the L-keys for rapid accessing.

Web link

https://products.wera.de/en/l-keys_l-keys_for_torx_screws_967_spkl_torx_bo_multicolour.html

Wera - 967 SPKL TORX® B0 Multicolour
05024355001 - 4013288172723

Wera Werkzeuge GmbH
Korzter Straße 21-25
D-42349 Wuppertal
Tel: +49 (0)2 02 / 40 45-0
E-Mail: info@wera.de

L-Keys for TORX® Screws

L-keys with a thermoplastic sleeve

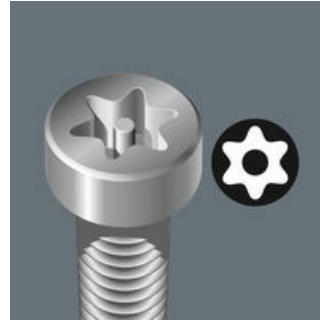


L-key for TORX® socket screws with safety pin



L-keys with a thermoplastic sleeve are manufactured out of easy-to-grip, circular material. The sleeve ensures that work is safe and comfortable even at low temperatures. High corrosion protection features thanks to the special BlackLaser surface treatment. Colour coding and large stamp to enable the desired L-key to be easily located.

TORX® with borehole (B0)



TORX® tools with a borehole prevent the unauthorised unfastening of safety screws. The screws contain a pin that protrudes into the drive profile so that "normal" TORX® tools cannot be used. This pin fits into the borehole of TORX® B0 tools allowing safety screws to be unfastened.

TORX® ball tip



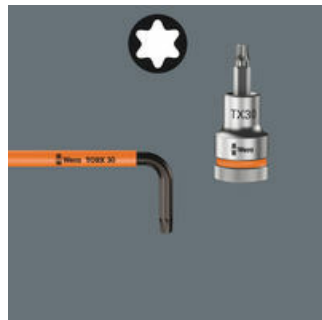
The spherical drive profile means that it is possible to swivel the axis of the tool to that of the screw, and therefore enable angled, "around-the-corner" screwdriving jobs.

Size identification



The size of each L-keys has been engraved by a laser. In addition Take it easy L-keys have a colour coding according to sizes - for simple and rapid accessing of the required tool. Making it easy to find the right tool.

Take it easy tool finder system



Take it easy tool finder system - with profile and size colour-coding for quick and easy tool selection. Colour-coded system for hexagon drive screws (L-Keys, Zyklop bit sockets), external hex drive screws and nuts (Joker wrenches, Zyklop sockets and Zyklop bit sockets with holding function), and TORX® drive screws (L-Keys, Zyklop bit sockets).

Web link






https://products.wera.de/en/l-keys_l-keys_for_torx_screws_967_spkl_torx_bo_multicolour.html

Wera - 967 SPKL TORX® B0 Multicolour
05024355001 - 4013288172723

Wera Werkzeuge GmbH
Korzter Straße 21-25
D-42349 Wuppertal
Tel: +49 (0)2 02 / 40 45-0
E-Mail: info@wera.de

L-Keys for TORX® Screws

Further versions in this product family:

					
		mm	mm	inch	inch
05024350001 ¹⁾	TX 8	76	16	3	5/8
05024351001 ¹⁾	TX 9	79	16	3 1/8	5/8
05024352001 ²⁾	TX 10	85	17	3 3/8	21/32
05024353001	TX 15	90	18	3 1/2	23/32
05024354001	TX 20	96	19	3 3/4	3/4
05024355001	TX 25	104	21	4 1/8	27/32
05024356001	TX 27	112	22	4 7/16	29/32
05024357001	TX 30	122	24	4 13/16	1
05024358001	TX 40	132	27	5 3/16	1 1/16

1) Product without bore hole at the short and without ball-end at the long arm.

2) Product without ball-end at the long arm.

Web link

https://products.wera.de/en/l-keys_l-keys_for_torx_screws_967_spkl_torx_bo_multicolour.html

 Wera - 967 SPKL TORX® B0 Multicolour
 05024355001 - 4013288172723

 Wera Werkzeuge GmbH
 Korzter Straße 21-25
 D-42349 Wuppertal
 Tel: +49 (0)2 02 / 40 45-0
 E-Mail: info@wera.de

X-ON Electronics

Largest Supplier of Electrical and Electronic Components

Click to view similar products for [Tool Kits & Cases](#) category:

Click to view products by [Wera](#) manufacturer:

Other Similar products are found below :

[217434-1](#) [4263](#) [1055420-1](#) [11-18-3023](#) [63860-8170](#) [856600-2](#) [690372163](#) [11-40-3247](#) [63883-2870](#) [63885-0270](#) [63901-5670](#) [63866-1070](#)
[63863-5070](#) [63892-7370](#) [11-18-3209](#) [63860-4070](#) [63881-0970](#) [A0403641](#) [11-18-3040](#) [63865-2070](#) [63910-1470](#) [63861-5070](#) [63850-7470](#)
[11-18-3201](#) [63910-7570](#) [FM 0501 146](#) [63883-0670](#) [63830-0070](#) [63902-9170](#) [11-18-3147](#) [11-18-3079](#) [63883-2670](#) [63900-1770](#) [11-18-3190](#)
[63851-1070](#) [63912-4770](#) [63911-5270](#) [63895-1070](#) [63860-1470](#) [63850-6070](#) [1-69411-3](#) [63852-9270](#) [63802-6270](#) [63902-4870](#) [11-18-3202](#)
[63852-9170](#) [63850-1070](#) [63830-0170](#) [63910-2870](#) [11-18-3010](#)