

Zyklop Mini 1



<b>EAN:</b>	4013288178756	<b>Size:</b>	190x98x36 mm
<b>Part number:</b>	05056491001	<b>Weight:</b>	520 g
<b>Article number:</b>	Tool-Check PLUS Imperial	<b>Country of origin:</b>	CZ
		<b>Customs tariff number:</b>	82079030

- 1/4" bit ratchet, tough-absorbing bits, Rapidaptor holder, adaptor and 1/4" sockets
- Ideal for working in confined spaces
- Tough viscous bits for universal use
- Use of 1/4" sockets also possible with the Wera adaptor 870/1
- With Take it easy tool finder: colour coding by size

Tool combination of ratchet, bit, sockets and a bitholding screwdriver in the smallest of spaces. The perfect universal companion for a multitude of screwdriving applications. Premium bitholding screwdriver with Kraftform Plus handle for comfortable ergonomic screwdriving, which avoids blisters and calluses. Hard handle zones for high working speeds, soft handle zones for a high torque transfer. Bit ratchet for quick working when screwdriving with a machine or conventional hand tool is not possible due to space constraints. Rapid reversing from clockwise to counterclockwise rotation and vice versa via the reversing lever. The knurling on the ratchet head allows for quick rotation (with the thumb). Easiest operation, even with just one hand. Ergonomic ratchet head/lever: Kraftform geometry with perfectly shaped contact surfaces for the fingers. Smallest possible tool design thanks to the direct bit mounting in the ratchet head, perfect for low working heights. Small return angle of 6° for precise working. Robust drop-forged solid steel design. Torques of over 65 Nm. The Rapidaptor bitholding screwdriver with fast-rotating sleeve: Can be used as an extension, for lightning-fast bit changes for even the smallest bit sizes with just one hand and without any extra tools. Tough bits, for universal use. Hand and machine sockets for nearly all applications. With "Take it easy" tool finder with colour coding by size - for quick and easy identification of the required tool. Slip-proof for easy grip even with oily hands. With ball stop groove. For external hexagon screws and bolts. Made of dull-chromed chrome-vanadium.



Web link

[https://products.wera.de/en/zyklop\\_ratchets\\_and\\_accessories\\_zyklop\\_mini\\_zyklop\\_mini\\_1\\_tool-check\\_plus\\_imperial.html](https://products.wera.de/en/zyklop_ratchets_and_accessories_zyklop_mini_zyklop_mini_1_tool-check_plus_imperial.html)

Wera - Tool-Check PLUS Imperial  
05056491001 - 4013288178756

Wera Werkzeuge GmbH  
Korzter Straße 21-25  
D-42349 Wuppertal  
Tel: +49 (0)2 02 / 40 45-0  
E-Mail: info@wera.de

Zyklop Mini 1

Set contents:

8001 A Bit Ratchet 1/4", 1/4" x 87 mm



1x 1/4" x 87 mm



813 Bitholding screwdriver, 1/4" x 78 mm



05051274001

1x 1/4" x 78 mm



889/4/1 K Rapidaptor Universal Bit Holder, 1/4" x 50 mm



05052502001

1x 1/4" x 50 mm



870/1 Adaptor, 1/4" x 25 mm



05136000001<sup>1)</sup>

1x 1/4" x 25 mm

1) With friction ball; for manual nut spinner sockets



Web link

[https://products.wera.de/en/zyklop\\_ratchets\\_and\\_accessories\\_zyklop\\_mini\\_zyklop\\_mini\\_1\\_tool-check\\_plus\\_imperial.html](https://products.wera.de/en/zyklop_ratchets_and_accessories_zyklop_mini_zyklop_mini_1_tool-check_plus_imperial.html)

Wera - Tool-Check PLUS Imperial  
05056491001 - 4013288178756

Wera Werkzeuge GmbH  
Korzter Straße 21-25  
D-42349 Wuppertal  
Tel: +49 (0)2 02 / 40 45-0  
E-Mail: info@wera.de

Zyklop Mini 1

8790 HMA Zyklop 1/4" socket, 3/16" x 23 mm



05003514001	1x	3/16" x 23 mm
05003516001	1x	1/4" x 23 mm
05003518001	1x	5/16" x 23 mm
05003519001	1x	11/32" x 23 mm
05003520001	1x	3/8" x 23 mm
05003521001	1x	7/16" x 23 mm
05003522001	1x	1/2" x 23 mm

851/1 TZ bits, PH 1 x 25 mm



05056505001	2x	PH 1 x 25 mm
05056510001	3x	PH 2 x 25 mm
05056525001	1x	PH 3 x 25 mm

800/1 TZ bits, 1 x 5.5 x 25 mm



05056225001	1x	1 x 5.5 x 25 mm
-------------	----	-----------------

867/1 TZ TORX® bits, TX 10 x 25 mm



05066305001	1x	TX 10 x 25 mm
05066308001	1x	TX 15 x 25 mm
05066310001	1x	TX 20 x 25 mm
05066312001	1x	TX 25 x 25 mm
05066315001	1x	TX 30 x 25 mm
05066320001	1x	TX 40 x 25 mm

867/1 Z TORX® B0 bits with bore hole, TX 10 x 25 mm



05066500001	1x	TX 10 x 25 mm
05066505001	1x	TX 15 x 25 mm
05066510001	1x	TX 20 x 25 mm
05066515001	1x	TX 25 x 25 mm
05066525001	1x	TX 30 x 25 mm

840/1 Z bits, 3/32" x 25 mm



05135072001	1x	3/32" x 25 mm
05135073001	1x	1/8" x 25 mm
05135074001	1x	5/32" x 25 mm
05135075001	1x	3/16" x 25 mm
05135077001	1x	5/16" x 25 mm

868/1 V Square-Plus bits, # 1 x 25 mm



05340245001	1x	# 1 x 25 mm
05066394001	3x	# 2 x 25 mm
05066396001	1x	# 3 x 25 mm

Web link

[https://products.wera.de/en/zyklop\\_ratchets\\_and\\_accessories\\_zyklop\\_mini\\_zyklop\\_mini\\_1\\_tool-check\\_plus\\_imperial.html](https://products.wera.de/en/zyklop_ratchets_and_accessories_zyklop_mini_zyklop_mini_1_tool-check_plus_imperial.html)

Wera - Tool-Check PLUS Imperial  
05056491001 - 4013288178756

Wera Werkzeuge GmbH  
Korzter Straße 21-25  
D-42349 Wuppertal  
Tel: +49 (0)2 02 / 40 45-0  
E-Mail: info@wera.de

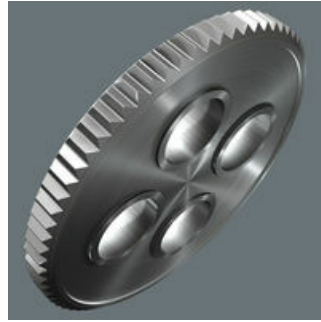
## Zyklop Mini 1

### The Zyklop Mini Ratchets



For all difficult-to-access applications.

### Small return angle



The fine tooth mechanism, with its 60 teeth, allows a small return angle of only 6° - ideal for precision work.

### Simple direction change



Simple switching between left/right operations.

### Rapid screwdriving



High working speeds can be attained with the Zyklop Mini 1. The thumb wheel is important, enabling more rapid screwdriving, and the Zyklop Mini handle only needs to be used for the final tightening of the screw.

### Slim design



Its slim design makes it ideal for all particularly confined working situations.

### Take it easy tool finder system



Take it easy tool finder system - with profile and size colour-coding for quick and easy tool selection. Colour-coded system for hexagon drive screws (L-Keys, Zyklop bit sockets), external hex drive screws and nuts (Joker wrenches, Zyklop sockets and Zyklop bit sockets with holding function), and TORX® drive screws (L-Keys, Zyklop bit sockets).

### Is such a small tool sufficiently resilient?



The Zyklop Mini 1 can withstand at least 65 Nm. That is far more power than can normally be transferred to such a small tool.

### Bit-Check as a lever



The Bit-Check itself can be used as a lever.

### Web link

[https://products.wera.de/en/zyklop\\_ratchets\\_and\\_accessories\\_zyklop\\_mini\\_zyklop\\_mini\\_1\\_tool-check\\_plus\\_imperial.html](https://products.wera.de/en/zyklop_ratchets_and_accessories_zyklop_mini_zyklop_mini_1_tool-check_plus_imperial.html)

Wera - Tool-Check PLUS Imperial  
05056491001 - 4013288178756

Wera Werkzeuge GmbH  
Korzter Straße 21-25  
D-42349 Wuppertal  
Tel: +49 (0)2 02 / 40 45-0  
E-Mail: [info@wera.de](mailto:info@wera.de)

## X-ON Electronics

Largest Supplier of Electrical and Electronic Components

*Click to view similar products for [Tool Kits & Cases](#) category:*

*Click to view products by [Wera](#) manufacturer:*

Other Similar products are found below :

[1055420-1](#) [11-18-3023](#) [63860-8170](#) [856600-2](#) [11-40-3247](#) [63883-2870](#) [63901-5670](#) [63866-1070](#) [63863-5070](#) [63892-7370](#) [11-18-3209](#)  
[63860-4070](#) [63881-0970](#) [A0403641](#) [11-18-3040](#) [63865-2070](#) [63910-1470](#) [63861-5070](#) [63850-7470](#) [11-18-3201](#) [63910-7570](#) [63883-0670](#)  
[63830-0070](#) [63902-9170](#) [11-18-3147](#) [11-18-3079](#) [63883-2670](#) [63900-1770](#) [11-18-3190](#) [63912-4770](#) [63911-5270](#) [63895-1070](#) [63860-1470](#)  
[63850-6070](#) [1-69411-3](#) [63852-9270](#) [63802-6270](#) [63902-4870](#) [11-18-3202](#) [63852-9170](#) [63850-1070](#) [63830-0170](#) [63910-2870](#) [11-18-3010](#)  
[63820-7070](#) [63851-7170](#) [63865-6170](#) [63900-4770](#) [63860-3070](#) [11-18-3082](#)