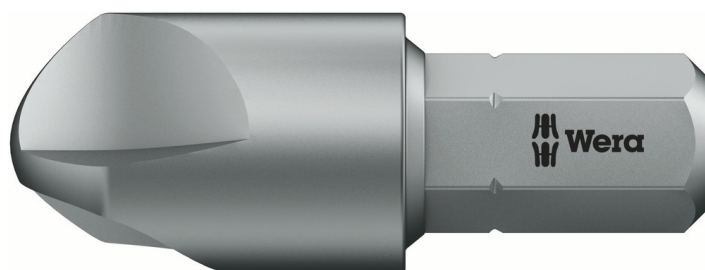


875/1 TRI-WING® bits, 32 mm, 7 x 32 mm

Bits for TRI-WING® Screws



EAN:	4013288033543	Size:	32x11x11 mm
Part number:	05066772001	Weight:	8 g
Article number:	875/1 TRI-WING® 32 mm	Country of origin:	CZ
		Customs tariff number:	82079030

- For TRI-WING® screws
- Ductile and tough for hard materials
- 1/4" hexagon drive (Wera connecting series 1)
- Suitable for Bosch, Fein, Holz-Her, Lecloux, Metabo
- Prevents premature breakage of the drive tip

High quality bits for TRI-WING® screws. Tough viscous for universal use. 1/4" hexagon, suitable for holders as per DIN ISO 1173-D 6.3.

Web link

https://products.wera.de/en/bits_holders_adaptors_the_range_of_bits_bits_for_tri-wing_screws_875_1_tri-wing_32_mm.html

Wera - 875/1 TRI-WING® 32 mm
05066772001 - 4013288033543

Wera Werkzeuge GmbH
Korzter Straße 21-25
D-42349 Wuppertal
Tel: +49 (0)2 02 / 40 45-0
E-Mail: info@wera.de

Bits for TRI-WING® Screws

The TRI-WING® screwdriving system







The TRI-WING® screwdriving system is mainly found in aviation and household technology (here e.g. on live components). The asymmetric arrangement of the three profile flanks prevents the use of anything other than the original tools. The high-precision Wera profile design ensures a secure fit of the tool in the head of the screw. The blades are manufactured out of bit material. The Wera know-how with regard to the hardening technology ensures a long service life of the tool.

Tough-absorbing bits



Tough-absorbing Wera bits (Z) prevent any premature breakage of the drive tip.

Further versions in this product family:

				
		mm	inch	mm
05066770001	6	32	1 1/4	11.0
05066772001	7	32	1 1/4	11.0
05066774001	8	32	1 1/4	12.5

Web link

https://products.wera.de/en/bits_holders_adaptors_the_range_of_bits_bits_for_tri-wing_screws_875_1_tri-wing_32_mm.html

Wera - 875/1 TRI-WING® 32 mm
05066772001 - 4013288033543

Wera Werkzeuge GmbH
Korzter Straße 21-25
D-42349 Wuppertal
Tel: +49 (0)2 02 / 40 45-0
E-Mail: info@wera.de

X-ON Electronics

Largest Supplier of Electrical and Electronic Components

Click to view similar products for [Screwdrivers, Nut Drivers & Socket Drivers](#) category:

Click to view products by [Wera](#) manufacturer:

Other Similar products are found below :

[272012M](#) [27850](#) [CE-16-03400-00-HNDLE-TORQ](#) [323451-000](#) [HMM-HH](#) [WUVT-1-120AC-P](#) [00-8987-YWPP](#) [32024](#) [XW4Z-00B](#)
[49-22-4073](#) [96025](#) [96030](#) [96560](#) [96430](#) [31830](#) [92270](#) [96012](#) [96436](#) [96536](#) [92064](#) [72820](#) [96520](#) [92040](#) [96416](#) [96570](#) [72823](#) [96525](#) [96720](#)
[31832](#) [92020](#) [96523](#) [96510](#) [96427](#) [92073](#) [92052](#) [72905](#) [72741](#) [72663](#) [32061](#) [30751](#) [130203/TA](#) [KLEIN TOOLS SCREWDRIVER 4-IN-1](#)
[612020B](#) [35-045](#) [6951](#) [83](#) [9058](#) [9977](#) [EMF](#) [PTE6](#)