



EAN:	4013288111128	Size:	25x7x7 mm
Part number:	05071038001	Weight:	6 g
Article number:	3867/1 TS TORX®	Country of origin:	CZ
		Customs tariff number:	82079030

- Solution to the extraneous rust problem: fasten stainless screws with stainless tools
- For recessed TORX® screws
- Torsion design against premature wear
- 1/4" hexagon drive (Wera connecting series 1)
- Take it easy tool finder: colour coding according to profile and size

High quality bits out of stainless steel for recessed TORX® screws. Wera stainless are made out of stainless steel which prevents the formation of unsightly extraneous rust. Come with Torsion zone: Torsion bits take-up torque peaks and absorb them in the Torsion zone. This prevents premature wear and extends the service life of the bit. 1/4" hexagon, suitable for holders as per DIN ISO 1173-D 6.3.



Web link

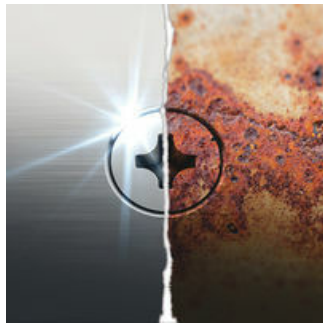
https://products.wera.de/en/bits_holders_adaptors_the_range_of_bits_bits_for_torx_screws_3867_1_ts_torx.html

Wera - 3867/1 TS TORX®
05071038001 - 4013288111128

Wera Werkzeuge GmbH
Korzter Straße 21-25
D-42349 Wuppertal
Tel: +49 (0)2 02 / 40 45-0
E-Mail: info@wera.de

Bits for TORX® Screws

Stainless Steel Bits



Wera stainless steel bits are manufactured out of stainless steel so unsightly rust can be avoided. The stainless steel bits from Wera are vacuum ice-hardened and have the hardness and strength needed for screw connections. There are no limitations to the industrial applications they are suitable for.

Vacuum ice-hardened



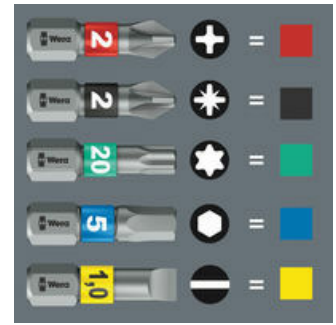
The stainless steel tools from Wera are vacuum ice-hardened and have the hardness and strength needed for screw connections. There are no limitations to the industrial applications they are suitable for.

Torsion bits






Torsion bits absorb the damaging peak torque loads in the torsion zone. This prevents premature wear and enhances the service life of the bits.

“Take it easy” tool finder



“Take it easy” tool finder with colour coding according to profiles and size stamp - for simple and rapid accessing of the required tool.

Further versions in this product family:

			
		mm	inch
05071030001	TX 8	25	1
05071031001	TX 9	25	1
05071032001	TX 10	25	1
05071033001	TX 15	25	1
05071034001	TX 20	25	1
05071035001	TX 25	25	1
05071036001	TX 27	25	1
05071037001	TX 30	25	1
05071038001	TX 40	25	1

Web link

https://products.wera.de/en/bits_holders_adaptors_the_range_of_bits_bits_for_torx_screws_3867_1_ts_torx.html

Wera - 3867/1 TS TORX®
05071038001 - 4013288111128

Wera Werkzeuge GmbH
Korzter Straße 21-25
D-42349 Wuppertal
Tel: +49 (0)2 02 / 40 45-0
E-Mail: info@wera.de

X-ON Electronics

Largest Supplier of Electrical and Electronic Components

Click to view similar products for [Screwdrivers, Nut Drivers & Socket Drivers](#) category:

Click to view products by [Wera](#) manufacturer:

Other Similar products are found below :

[272012M](#) [27850](#) [CE-16-03400-00-HNDLE-TORQ](#) [323451-000](#) [HMM-HH](#) [WUVT-1-120AC-P](#) [00-8987-YWPP](#) [32024](#) [XW4Z-00B](#)
[49-22-4073](#) [96025](#) [96030](#) [96560](#) [96430](#) [31830](#) [92270](#) [96012](#) [96436](#) [96536](#) [92064](#) [72820](#) [96520](#) [92040](#) [96416](#) [96570](#) [72823](#) [96525](#) [96720](#)
[31832](#) [92020](#) [96523](#) [96510](#) [96427](#) [92073](#) [92052](#) [72905](#) [72741](#) [72663](#) [32061](#) [30751](#) [130203/TA](#) [KLEIN TOOLS SCREWDRIVER 4-IN-1](#)
[612020B](#) [35-045](#) [6951](#) [83](#) [9058](#) [9977](#) [EMF](#) [PTE6](#)