

Click-Torque X 6 torque wrench for insert tools, 80-400 Nm, 14x18 x 80-400 Nm

Click-Torque adjustable torque wrenches for insert tools



| | | | |
|------------------------|------------------|-------------------------------|--------------|
| EAN: | 4013288193827 | Size: | 665x47x47 mm |
| Part number: | 05075656001 | Weight: | 0 g |
| Article number: | Click-Torque X 6 | Country of origin: | TW |
| | | Customs tariff number: | 82041100 |

- For 14x18 mm interchangeable insert tools
- Easy setting and saving of the desired torque value with audible and tactile clicks when reaching the scale values
- Audible and tactile release mechanism when the set torque value is reached
- Measuring range:80-400 Nm; Precise to +/- 3% as per DIN EN ISO 6789-1:2017-07
- Very robust design with ergonomic 2-component handle suitable for right-hand use

Click-Torque wrench in the unmistakable, robust Wera design with high accuracy as per DIN EN ISO 6789-1: 2017-07. Easy setting and saving of the default value. The audible and tactile clicks on reaching the scale values also facilitate the safe setting of the desired torque value. The robust release mechanism guarantees a clearly audible and tactile release signal when the set torque is reached. For right and left-hand use and with square insert 14x18mm for insert tools.

Web link

https://products.wera.de/en/torque_tools_series_click-torque_wrenches_click-torque_adjustable_torque_wrenches_for_insert_tools_click-torque_x_6.html

Wera - Click-Torque X 6
05075656001 - 4013288193827

Wera Werkzeuge GmbH
Korzter Straße 21-25
D-42349 Wuppertal
Tel: +49 (0)2 02 / 40 45-0
E-Mail: info@wera.de

Click-Torque adjustable torque wrenches for insert tools

Click-Torque Wrench series

Drive 14x18 mm

Exact



We wanted working with torque wrenches to be simple and accurate which is why we developed the Click-Torque wrenches. With the ability to set and save the default values and with the unmistakable, robust Wera design, these torque wrenches are the ideal tools for all bolting applications that require torque-controlled tightening (clockwise torque wrenches) and tightening and loosening (torque wrenches for insert tools).

For torque wrenches of the Click-Torque X series with 14x18 mm holder.

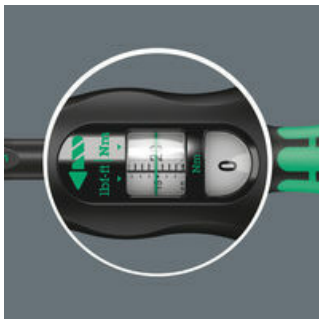
Precise to ± 3% as per DIN EN ISO 6789-1:2017-07.

Simple and safe

Simple setting

Release mechanism

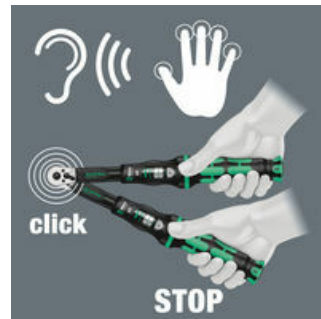
For right and left direction



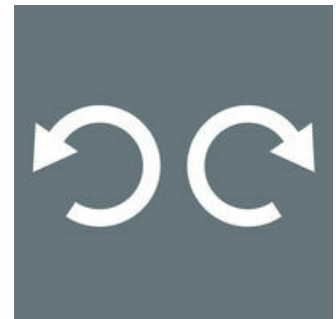
Easy setting and saving of the desired torque value; readable on the main and fine scales.



With audible and tactile clicks when adjusting the scale values.

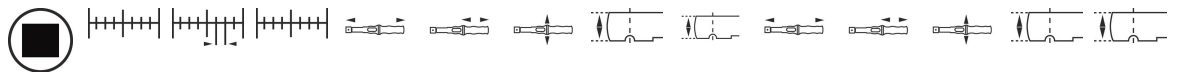


When the set torque value is reached, an audible and tactile mechanism triggers.



The Click-Torque wrenches for insert tools are suitable for right-hand and left-hand uses.

Further versions in this product family:



| | Nm | Nm | lbf. ft. | mm | mm | mm | mm | mm | inch | inch | inch | inch | inch | |
|-------------|-------|--------|----------|--------|-----|-----|----|----|------|--------|--------|--------|--------|-------|
| 05075656001 | 14x18 | 80-400 | 1.0 | 60-295 | 655 | 140 | 47 | 32 | 26 | 25 | 5 | 1 | 1 | 1 |
| | | | | | | | | | | 25/32" | 33/64" | 27/32" | 17/64" | 1/32" |

Web link

https://products.wera.de/en/torque_tools_series_click-torque_wrenches_click-torque_adjustable_torque_wrenches_for_insert_tools_click-torque_x_6.html

Wera - Click-Torque X 6
05075656001 - 4013288193827

Wera Werkzeuge GmbH
Korzter Straße 21-25
D-42349 Wuppertal
Tel: +49 (0)2 02 / 40 45-0
E-Mail: info@wera.de

Click-Torque X 6 torque wrench for insert tools, 80-400 Nm, 14x18 x 80-400 Nm

Click-Torque adjustable torque wrenches for insert tools



Web link

https://products.wera.de/en/torque_tools_series_click-torque_wrenches_click-torque_adjustable_torque_wrenches_for_insert_tools_click-torque_x_6.html

Wera - Click-Torque X 6
05075656001 - 4013288193827

Wera Werkzeuge GmbH
Korzter Straße 21-25
D-42349 Wuppertal
Tel: +49 (0)2 02 / 40 45-0
E-Mail: info@wera.de

X-ON Electronics

Largest Supplier of Electrical and Electronic Components

Click to view similar products for [Spanners](#) category:

Click to view products by [Wera](#) manufacturer:

Other Similar products are found below :

[74005](#) [74008](#) [1406504-3](#) [1406504-4](#) [1406504-5](#) [1406504-7](#) [1725859-2](#) [9965](#) [999-16625-001](#) [G70515-18](#) [1055265-1](#) [1055267-1](#) [1-1406504-0](#) [1055787-1](#) [DCH.91.251.PA](#) [TG70-18](#) [TG70](#) [G62748-11](#) [DPH.99.005.2K](#) [DCP.91.045.TN](#) [1055512-1](#) [1055276-1](#) [R282303020](#) [TA-0456](#) [DCA.91.149.0TN](#) [TA-0436](#) [TA-0398](#) [TOL-222901](#) [74_Z-0-0-193](#) [294GB-5069-17-N](#) [74_Z-0-0-2](#) [523200-4](#) [294GB-5070-25-A](#) [74_Z-0-0-79](#) [294GB-5070-17-A](#) [74_Z-0-0-321](#) [TOL-171801](#) [PR23350](#) [1490262-2](#) [9968](#) [AC24VS](#) [80117](#) [DCN.91.149.0TK](#) [BT-A-6010CAGE](#) [R282340000](#) [BT-BS-609WT](#) [BT-A-6000B](#) [R282303000](#) [BT-BS-610R](#) [BT-BS-610RT](#)