

9100 Guitar tool set, 27pieces

Kraftform Kompakt user-specific sets



EAN: 4013288211675
Part number: 05134015001
Article number: 9100 Gitarren-Werkzeugsatz

Size: 220x170x55 mm
Weight: 1010 g
Country of origin: CZ
Customs tariff number: 82079030

- The stainless steel bit (1.8x12x41 mm) is ideally suited for setting the screws to which the bridge is attached. Stainless steel prevents the formation of extraneous rust on stainless steel components.
- The input jacker included in the set allows the output socket to be safely positioned at installation and removal. The external hex socket is loosened or tightened with the Zyklop socket.
- String crank for guitars: With the 1/4" hexagon, the string crank can be inserted in the Kraftform 815 R bitholding screwdriver included in the set. The ergonomic shape of the handle makes it sit comfortably in the hand; the power can be charged precisely. Fits all guitar tuners.
- Practical metal tin for storage of picks for example. Closes firmly and permanently.
- Angle wrench for adjustment of the steel bar in the guitar neck. The special Hex-Plus geometry of the angle key makes for a better fit of the tool in the screw, the risk of slippage and subsequent damage is reduced, and the power transmission is clearly improved.

Guitar tool set: The set contains all the tools necessary for adjustment and maintenance repair work. Wera stainless steel angle wrench with Hex-Plus profile (sizes: 1.5, 2.0, 2.5, 5.0 and in the inch sizes 1/8", 5/32", 3/16"). Wera 89 mm long stainless steel bits for hexagon socket screws (sizes: 1.5, 2.0, 2.5), Kraftform handle for 1/4" bits, 1/4" stainless steel bits for slot (sizes: 1.8x12x41 mm, 0.6x3.5x89 mm, 1.2x8.0x89 mm), Phillips screws (sizes: PH 1x89 mm, PH 2x89 mm) and hexagon socket screws (size: 0.05"x25 mm), Wera adapter for handle (1/4" hex socket of the handle on 1/4" square of sockets), Wera Zyklop sockets (sizes 10 and 1/2"), string crank with 1/4" hex for use in the handle, Knipex string cutter, feeler gauge, input jacker, 2 picks.

Web link

https://products.wera.de/en/kraftform_kompakt_kraftform_kompakt_user-specific_sets_9100_gitarren-werkzeugsatz.html

Wera - 9100 Gitarren-Werkzeugsatz
05134015001 - 4013288211675

Wera Werkzeuge GmbH
Korzter Straße 21-25
D-42349 Wuppertal
Tel: +49 (0)2 02 / 40 45-0
E-Mail: info@wera.de

9100 Guitar tool set, 27pieces

Kraftform Kompakt user-specific sets



Set contents:

	815 R 05051269001	1 x 1/4" x 119 mm		3851/4 05071081001 05071082001	1 x PH 1 x 89 mm 1 x PH 2 x 89 mm
	3800/1 TS 05134029001	1 x 1.8 x 12 x 41 mm		3800/4 10071087001 10071088000	1 x 0.6 x 3.5 x 89 mm 1 x 1.2 x 8 x 89 mm
	3840/1 TS 10071093001	1 x 0.05" x 25 mm		3950 PKL 05022700001 05022701001 05022702001 05022703001 05022704001 05022705001	1 x 1.5 x 90 mm 1 x 2 x 101 mm 1 x 2.5 x 112 mm 1 x 3 x 123 mm 1 x 4 x 137 mm 1 x 5 x 154 mm
	3950 PKL inch 05022712001 05022714001 05022715001	1 x 1/8" x 123 mm 1 x 5/32" x 137 mm 1 x 3/16" x 154 mm		870/1 05136000001 ¹⁾	1 x 1/4" x 25 mm <small>1) With friction ball; for manual nut spinner sockets</small>
	8790 HMA 05003509001 05003521001	1 x 10 x 23 mm 1 x 7/16" x 23 mm		8790 HMA Deep 05004520001	1 x 1/2" x 50 mm
	9103 10134027000	1 x		9105 11190205	1 x
	9104 134028	1 x		9101 11190204	1 x
	9102 11190203	1 x		9110 11190206	1 x
	KNIPEX 74 01 140 11190202	1 x		K120 11990177	1 x 70 x 50 mm

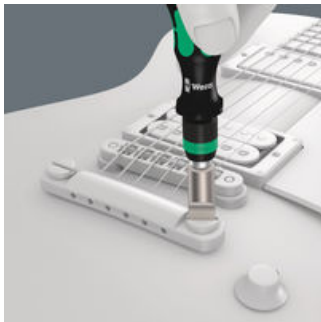
Web link

https://products.wera.de/en/kraftform_kompakt_kraftform_kompakt_user-specific_sets_9100_gitarren-werkzeugsatz.html

Wera - 9100 Gitarren-Werkzeugsatz
05134015001 - 4013288211675

Wera Werkzeuge GmbH
Korzter Straße 21-25
D-42349 Wuppertal
Tel: +49 (0)2 02 / 40 45-0
E-Mail: info@wera.de

Stainless against extraneous rust



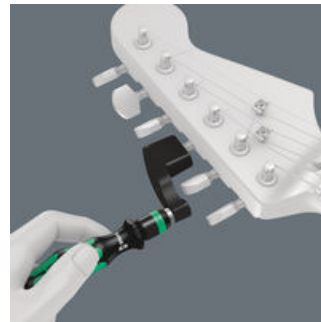
The stainless steel bit 3800/1 (1.8 x 12 x 41mm) is ideal for adjusting the screws that secure the Bridge. Stainless steel prevents the formation of extraneous rust on stainless steel components.

Input-Jacker



The Input-Jacker included in the set allows the output socket to be safely positioned at installation and removal. The external hexagon bolt is loosened or tightened with the Zyklop socket.

Stringer for guitars



With the 1/4" hexagon, the stringer can be inserted in the Kraffform 815 R handholder included in the set. The ergonomic shape of the handle makes it sit comfortably in the hand; the power can be charged precisely. Fits all guitar machine heads.

Useful metal box



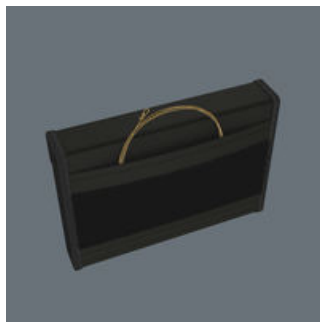
Useful metal box for storing plectrums for example. Closes firmly and permanently.

Angle wrench to adjust the steel bar in the guitar neck



The special Hex-Plus geometry of the angle wrench makes for a better fit of the tool in the screw, reducing the risk of slippage and damage, and significantly improving the power transmission.

In a robust textile box



Robust textile box for handy storage and safe transport of the tools. Guitar strings etc can be stored in the sleeve on the back. With its hook and loop fastener zones on the back, the textile box can be attached to walls or shelves.

Web link

https://products.wera.de/en/kraftform_kompakt_kraftform_kompakt_user-specific_sets_9100_gitarren-werkzeugsatz.html

Wera - 9100 Gitarren-Werkzeugsatz
05134015001 - 4013288211675

Wera Werkzeuge GmbH
Korzerter Straße 21-25
D-42349 Wuppertal
Tel: +49 (0)2 02 / 40 45-0
E-Mail: info@wera.de

X-ON Electronics

Largest Supplier of Electrical and Electronic Components

Click to view similar products for [Tool Kits & Cases](#) category:

Click to view products by [Wera](#) manufacturer:

Other Similar products are found below :

[217434-1](#) [4263](#) [1055420-1](#) [11-18-3023](#) [63902-3270](#) [63860-8170](#) [856600-2](#) [690372163](#) [11-40-3247](#) [63883-2870](#) [63885-0270](#) [63901-5670](#)
[63866-1070](#) [63863-5070](#) [63892-7370](#) [11-18-3209](#) [63860-4070](#) [63881-0970](#) [A0403641](#) [11-18-3040](#) [63865-2070](#) [63910-1470](#) [63861-5070](#)
[63850-7470](#) [11-18-3201](#) [63910-7570](#) [FM 0501 146](#) [63883-0670](#) [63830-0070](#) [63902-9170](#) [11-18-3147](#) [11-18-3079](#) [63883-2670](#) [63900-1770](#)
[11-18-3190](#) [63851-1070](#) [63912-4770](#) [63911-5270](#) [63895-1070](#) [63860-1470](#) [63850-6070](#) [1-69411-3](#) [63852-9270](#) [63802-6270](#) [63902-4870](#)
[11-18-3202](#) [63852-9170](#) [63850-1070](#) [63830-0170](#) [63910-2870](#)