

3867/4 TORX®, stainless, TX 25 x 89 mm

Bits for TORX® Screws



EAN:	4013288204301	Size:	89x7x7 mm
Part number:	05134859001	Weight:	25 g
Article number:	3867/4 TORX®	Country of origin:	CZ
		Customs tariff number:	82079030



- For recessed TORX® screws
- Solution to the extraneous rust problem: fasten stainless screws with stainless tools
- 1/4" hexagon drive (Wera connecting series 4)
- Suitable for AEG, ARO, Atlas-Copco, Biax, Black & Decker, Bosch, Buckeye Tools etc.
- Vacuum ice-hardened

High quality bits out of stainless steel for recessed TORX® screws. Wera stainless are made out of stainless steel which prevents the formation of unsightly extraneous rust. 1/4" hexagon, suitable for holders as per DIN ISO 1173-F 6.3.

Web link

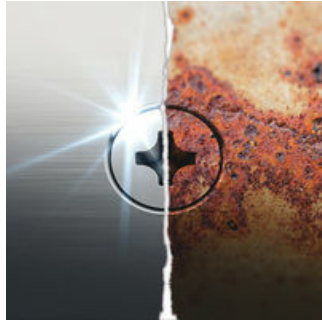
https://products.wera.de/en/bits_holders_adaptors_the_range_of_bits_bits_for_torx_screws_3867_4_torx.html

Wera - 3867/4 TORX®
05134859001 - 4013288204301

Wera Werkzeuge GmbH
Korzter Straße 21-25
D-42349 Wuppertal
Tel: +49 (0)2 02 / 40 45-0
E-Mail: info@wera.de

Bits for TORX® Screws

Stainless Steel Bits



Wera stainless steel bits are manufactured out of stainless steel so unsightly rust can be avoided. The stainless steel bits from Wera are vacuum ice-hardened and have the hardness and strength needed for screw connections. There are no limitations to the industrial applications they are suitable for.

Screw stainless steel together with stainless steel!



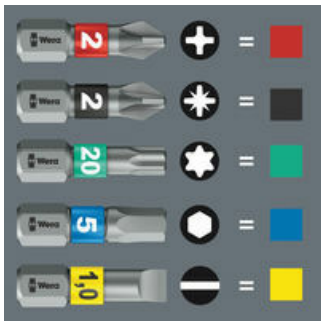
Solution to the rust problem: screw stainless steel together with stainless steel! Wera stainless steel tools are manufactured out of stainless steel so unsightly rust can be avoided.

Vacuum ice-hardened



The stainless steel tools from Wera are vacuum ice-hardened and have the hardness and strength needed for screw connections. There are no limitations to the industrial applications they are suitable for.

“Take it easy” tool finder



"Take it easy" tool finder with colour coding according to profiles and size stamp - for simple and rapid accessing of the required tool.

Web link




https://products.wera.de/en/bits_holders_adaptors_the_range_of_bits_bits_for_torx_screws_3867_4_torx.html

Wera - 3867/4 TORX®
05134859001 - 4013288204301

Wera Werkzeuge GmbH
Korzter Straße 21-25
D-42349 Wuppertal
Tel: +49 (0)2 02 / 40 45-0
E-Mail: info@wera.de

Bits for TORX® Screws

Further versions in this product family:

		 mm	 inch
05134856001	TX 10	89	3 1/2
05134857001	TX 15	89	3 1/2
05071046001	TX 20	50	2
05134858001	TX 20	89	3 1/2
05071047001	TX 25	50	2
05134859001	TX 25	89	3 1/2
05134860001	TX 30	89	3 1/2

Web link

https://products.wera.de/en/bits_holders_adaptors_the_range_of_bits_bits_for_torx_screws_3867_4_torx.html

Wera - 3867/4 TORX®
 05134859001 - 4013288204301

Wera Werkzeuge GmbH
 Korzter Straße 21-25
 D-42349 Wuppertal
 Tel: +49 (0)2 02 / 40 45-0
 E-Mail: info@wera.de

X-ON Electronics

Largest Supplier of Electrical and Electronic Components

Click to view similar products for [Screwdrivers, Nut Drivers & Socket Drivers](#) category:

Click to view products by [Wera](#) manufacturer:

Other Similar products are found below :

[272012M](#) [27850](#) [CE-16-03400-00-HNDLE-TORQ](#) [323451-000](#) [HMM-HH](#) [WUVT-1-120AC-P](#) [00-8987-YWPP](#) [32024](#) [XW4Z-00B](#)
[49-22-4073](#) [96025](#) [96030](#) [96560](#) [96430](#) [31830](#) [92270](#) [96012](#) [96436](#) [96536](#) [92064](#) [72820](#) [96520](#) [92040](#) [96416](#) [96570](#) [72823](#) [96525](#) [96720](#)
[31832](#) [92020](#) [96523](#) [96510](#) [96427](#) [92073](#) [92052](#) [72905](#) [72741](#) [72663](#) [32061](#) [30751](#) [130203/TA](#) [KLEIN TOOLS SCREWDRIVER 4-IN-1](#)
[612020B](#) [35-045](#) [6951](#) [83](#) [9058](#) [9977](#) [EMF](#) [PTE6](#)