

2050 PH Screwdriver for Phillips screws for electronic applications, PH 000 x 40 mm
Series Kraftform Micro



EAN:	4013288164506	Size:	137x13x13 mm
Part number:	05345290001	Weight:	11 g
Article number:	2050 PH Micro	Country of origin:	CZ
		Customs tariff number:	82054000



- Kraftform Micro screwdriver for cross-recess Phillips screws
- Multi-component Kraftform Micro handle for fast and ergonomic screwdriving
- Anti-roll feature and swivel cap for rapid twisting
- The Wera Black Point tip offers an exact fit and optimum corrosion protection
- Take it easy tool finder: colour coding according to profile and size

High quality Wera Micro screwdriver for precision mechanical jobs. Rapid twisting results from fixing the hand on the head and using the fast-turning zone just below. This makes time-consuming grip adjustments unnecessary. Power zones with integrated soft sections ensure the transfer of high loosening and tightening torque; a precision zone for the right rotation angle during fine adjustment work. The Black Point tip offers optimised corrosion protection and an exact fit. "Take it easy" tool finder with colour coding according to profiles and size stamp – for simple and rapid accessing of the required tool.

Web link
https://products.wera.de/en/screwdrivers_series_kraftform_micro_2050_ph_micro.html

Wera - 2050 PH Micro
05345290001 - 4013288164506

Wera Werkzeuge GmbH
Korzter Straße 21-25
D-42349 Wuppertal
Tel: +49 (0)2 02 / 40 45-0
E-Mail: info@wera.de

Kraftform Micro Handle

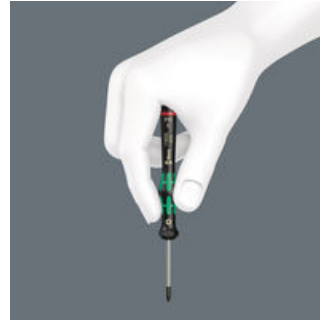


Screwdriving jobs in electrical and precision engineering applications are often tedious and time-consuming. We learned from users what is important for them: working speeds, torque, precision – and we then focused particularly on these issues.



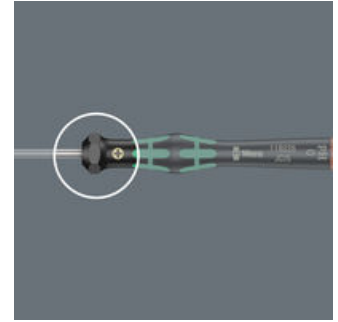
Multi-component screwdriver handle for ergonomic working.

The refined screwdriver for electronics technicians



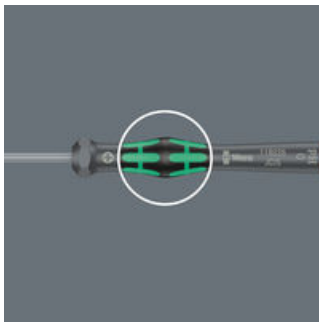
The Kraftform Micro, with its three zones and their specific arrangement, satisfies these requirements perfectly. The free-turning cap that provides support for the hand works with these advantages, enabling quick and easy precision work.

The precision zone



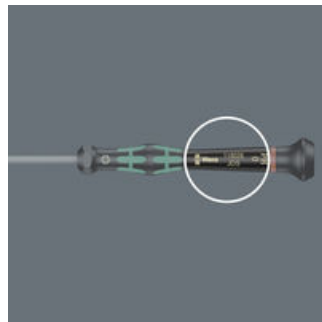
The precision zone directly above the blade gives the user a better feel for the right rotation angle during fine adjustment work.

The power zone



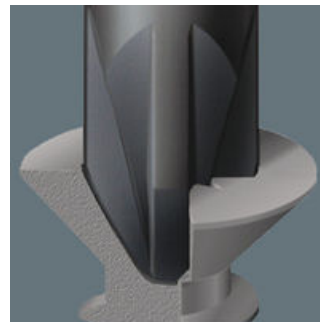
The power zone has integrated soft zones near the blade tip to ensure high torque transfer for loosening or tightening screws without losing contact with the screw.

The fast-turning zone



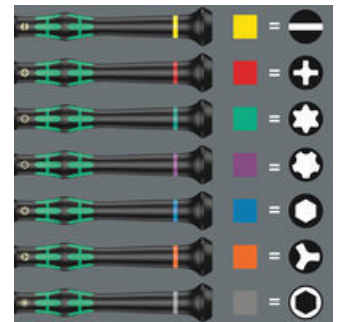
The fast-turning zone just below the rotating cap allows rapid twisting.

Wera Black Point tip



The Wera Black Point tip and a refined hardening process ensure long service life of the tip, improved corrosion protection and an exact fit.

“Take it easy” Tool Finder



Screwdrivers with “Take it easy” tool finder: colour coding according to profile and size stamp.

2050 PH Screwdriver for Phillips screws for electronic applications, PH 000 x 40 mm
Series Kraftform Micro



Further versions in this product family:



mm



mm



mm



inch

05345290001^{1),2)}	PH 000	40	97	1.5/2.5	1 9/16
05118019001 ^{1),2)}	PH 00	40	97	1.8/2.5	1 9/16
05118020001 ¹⁾	PH 00	60	97	2.5	2 3/8
05118026001 ³⁾	PH 0	40	97	3.0	1 9/16
05118022001 ³⁾	PH 0	60	97	3.0	2 3/8
05118023001	PH 1	60	97	4.0	2 3/8
05118024001	PH 1	80	97	4.0	3 1/8

1) Optimised for Asian PH screws

2) On the output side, the blade is turned to a nominal length of 10 mm.

3) Size 0 modified according to JCS 0 (Japanese Camera Industrial Standard)

Web link

https://products.wera.de/en/screwdrivers_series_kraftform_micro_2050_ph_micro.html

Wera - 2050 PH Micro
 05345290001 - 4013288164506

Wera Werkzeuge GmbH
 Korzter Straße 21-25
 D-42349 Wuppertal
 Tel: +49 (0)2 02 / 40 45-0
 E-Mail: info@wera.de

X-ON Electronics

Largest Supplier of Electrical and Electronic Components

Click to view similar products for [Screwdrivers, Nut Drivers & Socket Drivers](#) category:

Click to view products by [Wera](#) manufacturer:

Other Similar products are found below :

[1406504-2](#) [272012M](#) [271001M](#) [30246](#) [HMM-HH](#) [32024](#) [TL10416](#) [612020B](#) [35-045](#) [6951](#) [83](#) [9977](#) [EMF](#) [99833](#) [RB1](#) [S3166V](#) [X103V](#)
[XTD10TP](#) [X108N](#) [HS7N](#) [HS618N](#) [LN25MMN](#) [HS18N](#) [P4N](#) [R146N](#) [P12SN](#) [R5324N](#) [99764N](#) [P8N](#) [99312N](#) [R3163N](#) [SX101N](#) [LN22N](#)
[XTD10N](#) [9955MMN](#) [995MMN](#) [996MMN](#) [LN25N](#) [THS9N](#) [R3166N](#) [R144N](#) [RB2N](#) [HS10N](#) [99964BPN](#) [HS11N](#) [HS12N](#) [THS8N](#) [TL12N](#)
[LN23BPN](#) [R5168N](#)