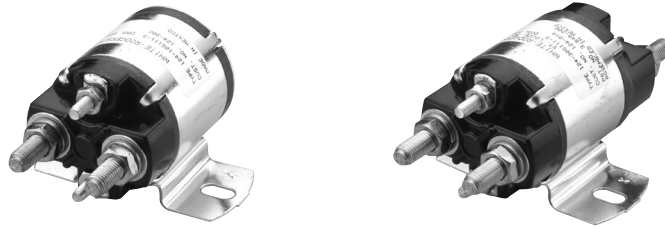


# RELAYS AND CONTACTORS

## D.C. Power Contactors – Type 124



Sec.	STANCOR PART NUMBER	Duty Cycle	Terminal Type*	Pole Form	Bracket Style	Coil Volt. D.C.	Coil Resistance (Ohms) @ 25°C	Contact Material	Contact Rating-(Amps.) Inductive Load				DIMENSIONS INCHES			Weight (oz.)	Agency Certif.	
									Volt. D.C.	Normally Open Continuous	Normally Closed Continuous	Normally Open Inrush**	Normally Closed Inrush**	L	Case W			H
A	124-906	Continuous	3	SPNO	Standard	12	13.2	Silver Alloy	12	100	400	-	-	3.56	3.13	2.19	16.0	-
	124-902	Continuous	4	SPNO	Standard	12	13.2	Silver Alloy	12	100	400	-	-	3.56	3.13	2.19	16.0	-
	124-910	Continuous	6	SPDT	Standard	12	13.2	Silver Alloy	12	100	400	50	200	4.69	3.13	2.19	19.0	-
B	124-907	Continuous	3	SPNO	Standard	24	53.0	Silver Alloy	24	100	400	-	-	3.56	3.13	2.19	16.0	-
	124-903	Continuous	4	SPNO	Standard	24	53.0	Silver Alloy	24	100	400	-	-	3.56	3.13	2.19	16.0	-
	124-911	Continuous	6	SPDT	Standard	24	53.0	Silver Alloy	24	100	400	50	100	4.69	3.13	2.19	19.0	-
C	124-908	Continuous	3	SPNO	Standard	36	120.0	Silver Alloy	36	100	400	-	-	3.56	3.13	2.19	16.0	-
	124-904	Continuous	4	SPNO	Standard	36	120.0	Silver Alloy	36	100	400	-	-	3.56	3.13	2.19	16.0	-
	124-912	Continuous	6	SPDT	Standard	36	120.0	Silver Alloy	36	100	400	50	100	4.69	3.13	2.19	19.0	-
D	124-913	Continuous	4	SPNO	Standard	48	213.0	Silver Alloy	36	100	400	-	-	3.56	3.13	2.19	16.0	-

\* Terminal Type: "3" = Grounded Coil, SPNO  
 "4" = Isolated Coil, SPNO  
 "6" = Isolated Coil, SPDT

For outline drawings refer to page 55.

\*\* Inrush Current: Current applied within the first 1/2 second of contact closure

### Engineering Design Data

D.C. Type	Coil Rating Nominal Magnetic Coil Rating (Watts)	Operation in % of Nom. Coil Voltage Rating		Breakdown Voltages All Terminals - 60 Hz RMS			Contact Material		Electrical Life		Mechanical Life		Max. Oper. Temp. °F
		Pick-up	Max. Safe Operate	Opposite Polarity	Open Contacts Same Polarity	To Ground	Power	Pilot	Oper. At Rated Load	Oper. Per Min.	Oper. At No Load	Oper. Per Min.	
124	12	75%	110%	500	500	500	Silver Alloy	Gold	50,000	2	100,000	6	150

#### Temperature Range

— -40°F to 150°F

#### Terminations

- Contacts: 5/16"-24 UNF-2A thread
- Coil: #10-32 UNF-2A thread

#### Recommended Mounting

— Vertical plane with coil terminals up.

#### Hardware Torque Specification

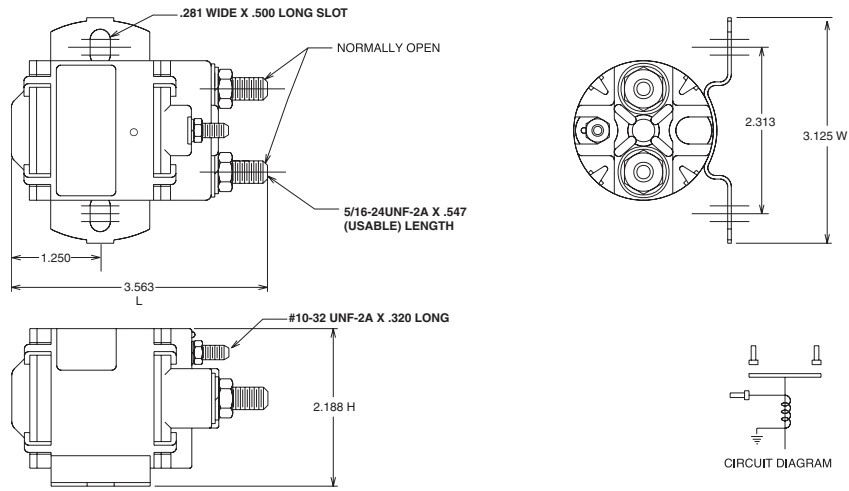
- Contact Terminal: 60 inch-lbs., max.
- Coil Terminal: 12-18 inch lbs.
- **Caution: A back-up wrench must be used to hold the bottom nut stationary**

#### Type 124 Custom Design Capabilities

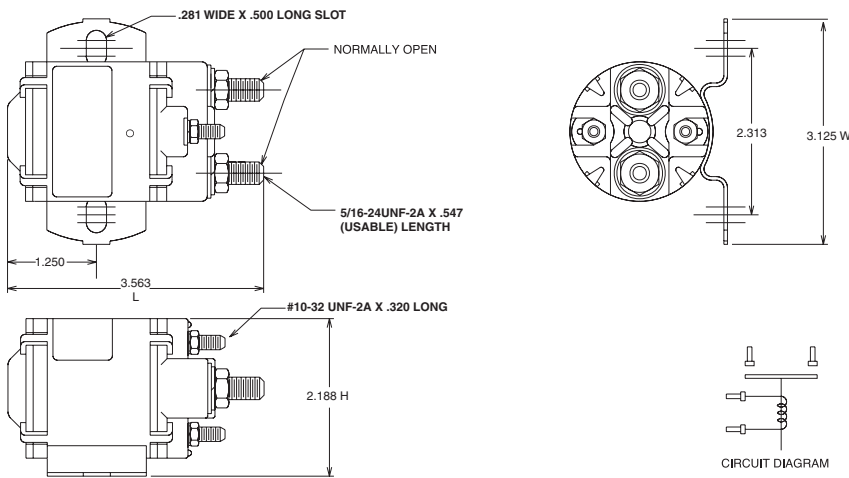
- Coil voltages 6 VDC through 48 VDC
- High vibration
- Gold plated contacts for pilot duty (low load switching) applications
- Please complete application data form on page 95 of this section.

**Note: Caution must be used in coil selection for use in 12 volt systems where battery charging may expose coil to continuous, higher-than-rated voltage. Stancor will not be responsible for consequences of misapplied solenoids.**

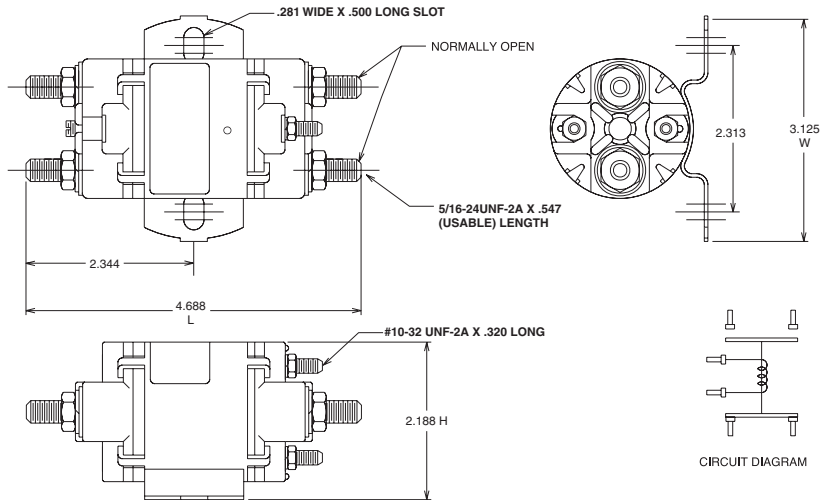
**Terminal Type 3 – Coil Grounded to Case SPNO**



**Terminal Type 4 – Isolated Coil SPNO**



**Terminal Type 6 – Isolated Coil SPDT**



## X-ON Electronics

Largest Supplier of Electrical and Electronic Components

*Click to view similar products for [Contactors - Electromechanical category](#):*

*Click to view products by [White-Rodgers manufacturer](#):*

Other Similar products are found below :

[6-1618400-7](#) [686-117111](#) [686-120111](#) [686-924](#) [686-948](#) [70-901](#) [70-914](#) [MB-3D-6](#) [MC-22A/4-AC120V](#) [8-1616943-9](#) [8-1672124-5](#)  
[A40-30-10-84](#) [120-905](#) [A701U](#) [120-904](#) [1393132-9](#) [154-905](#) [154-912](#) [154-913](#) [154-915](#) [154-902](#) [154-910](#) [AVR743D](#) [B6-40-00-84](#) [B7-40-00-84](#) [1616017-5](#) [1616021-1](#) [MVDILM](#) [HP-11D-24](#) [P25-E5019-1](#) [P30C47A12D1-120](#) [P40C47A12D1-120](#) [P40P47D13P1-24-01](#) [CA7-12-10-240](#) [CA7-72-00-24Z](#) [90-162](#) [9-1393132-2](#) [2NC4F0222](#) [A275KXXV2-120VAC](#) [ACC338UMM20](#) [AF80-30-11-13](#) [SZ-B1](#) [CGC-9A-120](#) [3GC2H0M22](#) [3NC0T0A22](#) [3NC1Q0A22](#) [3NC2H0A22](#) [3NC2T0122/SE](#) [3TF3400-0BB4](#) [MC-12B-DC24V](#)