

Emerson™

# SureSwitch™ Contactor Upgrade



## 49P11-843

**Universal Electronic Replacement**  
for Mechanical Compressor Contactors



Contactor

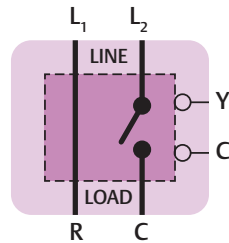


- Short-Cycle Timer
- Brownout Protection
- Long-Life Sealed Switch



### Benefits

- 5x contactor life
- Totally sealed switch to keep out ants and debris
- Microprocessor control nearly eliminates contact welding and pitting
- Ideal install with new Preventative Maintenance contracts
- Compressor is protected from brownouts and short cycling
- Save on pest control treatments



**5-Year Limited Warranty**

For up to 5 Ton/40 FLA applications

**White-Rodgers™**

  
**EMERSON™**

Emerson™

# SureSwitch™ Contactor Upgrade

49P11-843



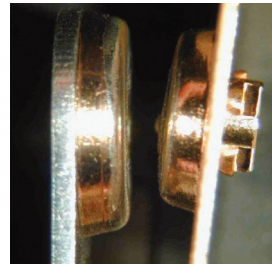
## Universal Electronic Replacement for Mechanical Compressor Contactors

### Features

- Microprocessor controlled sealed compressor switching
- Line voltage brownout protection
- Short cycle protection
- Tricolor LED displays
- Heavy-duty lug connectors
- Zero chatter latching relay
- Four-hole mounting matches mechanical contactors
- Random start delay on power up and brownout recovery
- Compressor test and cycle count by pushbutton

### Performance Tested

The sealed SureSwitch has undergone exhaustive testing on Copeland 5-ton scroll compressors to demonstrate ultimate reliability. This technology has been utilized on OEM controls since 2006 and is now available for the Aftermarket.

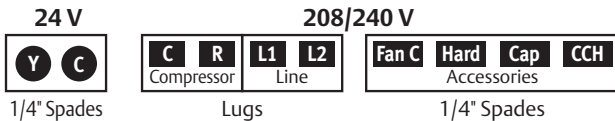


Contacts after one million cycle testing.

### 5x Contactor Life

Microprocessor controlled switching algorithms reduce arcing, virtually eliminating contact pitting and welding.

### Terminal Designations



### Specifications

#### Electrical Ratings

Line Voltage Input ..... 208/240 VAC, 50/60 Hz  
 Full Load Amperes (FLA) ..... 40A  
 Locked Rotor Amperes (LRA) ..... 200A  
 Control (Coil) Voltage (Y, C) ..... 24 VAC, 50/60 Hz

#### Recommended Terminal Torque – C, R, L1 and L2

#4 – 6 AWG ..... 45 in-lbs  
 #8 AWG ..... 40 in-lbs  
 #10 – 14 AWG ..... 35 in-lbs  
 24 VAC (Y, C) Terminals are 1/4" Male QC's accepting #12-24 AWG wire

#### Timings

Anti-Short-Cycle Delay ..... 0s or 180s (selectable) at 60 Hz  
 0s or 216s (selectable) at 50 Hz  
 Compressor Test ..... 5s at 60 Hz  
 6s at 50 Hz

LED Flash Codes	
Slow Green	Standby
Solid Green	Normal
Fast Green	Delay
Green / Red	Low Line Volt.
Green / Yellow / Red	Test

#### Dimensions

2-3/4" W x 2-3/8" H x 3-7/8" L

#### Operating Temperature Range

-40° to 158° F (-40° to 70° C)

#### Humidity Range

5 to 95% relative Humidity (non-condensing)

#### For Additional Information

EmersonSureSwitch.com  
 Scan QR Code or visit us at [www.white-roddgers.com](http://www.white-roddgers.com)

**SureSwitch requires line voltage for operation and testing**

## X-ON Electronics

Largest Supplier of Electrical and Electronic Components

*Click to view similar products for [Contactors - Electromechanical category](#):*

*Click to view products by [White-Rodgers manufacturer](#):*

Other Similar products are found below :

[6-1618400-7](#) [686-117111](#) [686-120111](#) [686-924](#) [686-948](#) [70-901](#) [70-914](#) [MB-3D-6](#) [MC-22A/4-AC120V](#) [8-1616943-9](#) [8-1672124-5](#)  
[A40-30-10-84](#) [120-905](#) [A701U](#) [120-904](#) [1393132-9](#) [154-905](#) [154-912](#) [154-913](#) [154-915](#) [154-902](#) [154-910](#) [AVR743D](#) [B6-40-00-84](#) [B7-40-00-84](#) [1616017-5](#) [1616021-1](#) [MVDILM](#) [HP-11D-24](#) [P25-E5019-1](#) [P30C47A12D1-120](#) [P40C47A12D1-120](#) [P40P47D13P1-24-01](#) [CA7-12-10-240](#) [CA7-72-00-24Z](#) [90-162](#) [9-1393132-2](#) [2NC4F0222](#) [A275KXXV2-120VAC](#) [ACC338UMM20](#) [AF80-30-11-13](#) [SZ-B1](#) [CGC-9A-120](#) [3GC2H0M22](#) [3NC0T0A22](#) [3NC1Q0A22](#) [3NC2H0A22](#) [3NC2T0122/SE](#) [3TF3400-0BB4](#) [MC-12B-DC24V](#)