



90-380

90-360 THRU 90-486 RELAYS

Heavy-duty general purpose relay operates in any position.

FEATURES

- Compact, totally enclosed design
- For heating and cooling applications and general switching
- Quiet, reliable and economical

SPECIFICATIONS

Temperature Range..... -40°F to 150°F
 Mechanical Life (no load)..... 1,000,000 operations, 120 operations/min.
 Electrical Life (rated load) 100,000 operations, 6 operations/min.
Load test making inrush rating (0.4 to 0.5 P.F.)
Breaking 100% continuous rating (0.65 to 0.8 P.F.)
 Coils, Frequency 50 / 60 Hz
 Coils, Insulation Class B
 Coils, Termination 1/4" Quick Connect
 Coils, Operate..... 85% of nominal coil voltage; 110% maximum safe operate
 Coils, Duty Cycle..... Continuous
 Weight 2.3 oz.
 UR/CUR File Number E12139
 CSA/CUS Certificate Number LR13360

90-360 THRU 90-486 RELAYS

COIL VOLTAGE AC (50/60 HZ)	SWITCH ACTION	RES DC OHMS	COIL DATA NOM. CURRENT MA	COIL DATA NOMINAL VA SEALED	INRUSH VA	MODEL NUMBER	ITEM NUMBER
24	SPNO	77	125	3	4	90-360	90 360S1
24	SPDT	77	125	3	4	90-370	90 370S1
24	SPNO/SPNC	77	125	3	4	90-380	90 380S1
120	SPNO	2,000	25	3	4	90-362	90 362S1
120	SPDT	2,000	25	3	4	90-372	90 372S1
208/240	SPDT	6,050	12.5	3	4	90-374	90 374S1
208/240	SPNO/SPNC	6,050	12.5	3	4	90-384	90 384S1
277	SPNO	10,300	10.8	3	4	90-466	90 466S1
277	SPDT	10300	10.8	3	4	90-476	90 476S1
277	SPNO/SPNC	10300	10.8	3	4	90-486	90 486S1

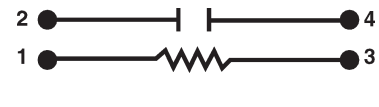
WIRING DIAGRAMS



SPNO / SPNC



SPDT

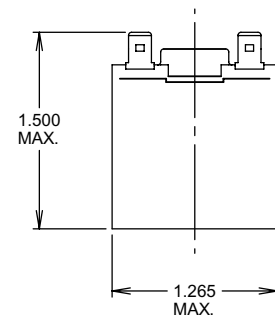
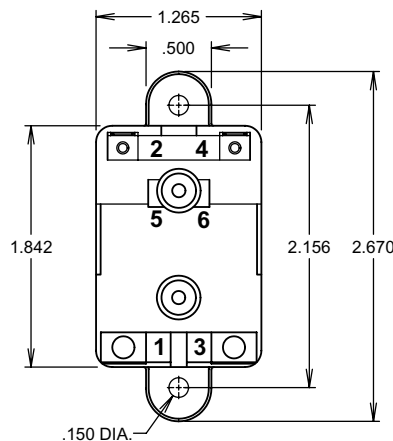


SPNO

90-360 THRU 90-486 RELAYS

Contact Rating

INDUCTIVE	RESISTIVE
12 Amps. Continuous, 60 Amps. Inrush @ 125 VAC	18 Amps. Continuous @ 277 VAC
8 Amps. Continuous, 48 Amps. Inrush @ 250 VAC	



X-ON Electronics

Largest Supplier of Electrical and Electronic Components

Click to view similar products for [General Purpose Relays](#) category:

Click to view products by [White-Rodgers](#) manufacturer:

Other Similar products are found below :

[PCN-105D3MH,000](#) [59641F200](#) [5JO-1000CD-SIL](#) [LY1SAC110120](#) [5X827E](#) [5X837F](#) [5X840F](#) [5X842F](#) [5X848E](#) [LY2N-AC120](#) [LY2S-AC220/240](#) [LY2-US-AC120](#) [LY3-US-AC120](#) [LY4F-UA-DC12](#) [LY4F-UA-DC24](#) [LY4F-US-AC120](#) [LY4F-US-AC240](#) [LY4F-US-DC24](#) [LY4F-VD-AC110](#) [LYQ20DC12](#) [M115C60](#) [M115N010](#) [M115N0150](#) [6031007G](#) [603-12D](#) [61211T0B4](#) [61212T400](#) [61222Q400](#) [61243B600](#) [61243C500](#) [61243Q400](#) [61311BOA2](#) [61311BOA6](#) [61311BOA8](#) [61311C0A2](#) [61311COA1](#) [61311COA6](#) [61311F0A2](#) [61311QOA1](#) [61311QOA4](#) [61311T0D6](#) [61311TOA6](#) [61311TOA7](#) [61311TOB3](#) [61311TOB4](#) [61311U0A6](#) [61312Q600](#) [61312T400](#) [61312T600](#) [61313U200](#)