

# DISC THERMOSTATS

## Snap Action Disc Thermostats



— Automatic Reset

STO-160

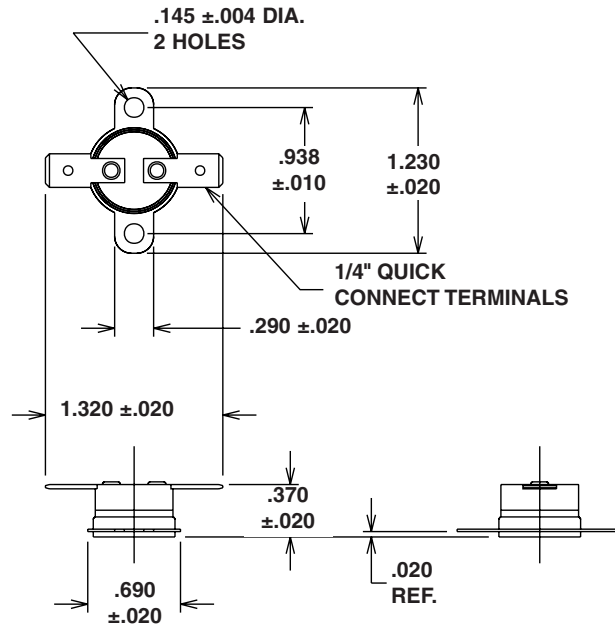
### Operating Specifications

Sec.	STANCOR PART NUMBER	Operating Range <sup>1</sup>		Function <sup>2</sup>	Differential <sup>3</sup>	
		°F	°C			
A	STO-60	55 to 65	13 to 18	Opens	20°F	12°C
	STO-85	80 to 90	27 to 32	Opens	15°F	8°C
	STC-100	93 to 107	34 to 42	Closes	30°F	17°C
	STO-110	105 to 115	41 to 46	Opens	30°F	17°C
B	STO-120	115 to 125	46 to 52	Opens	30°F	17°C
	STC-120	113 to 127	45 to 53	Closes	30°F	17°C
	STO-140	135 to 145	57 to 63	Opens	30°F	17°C
	STC-140	133 to 147	56 to 64	Closes	30°F	17°C
C	STO-150	145 to 155	63 to 68	Opens	30°F	17°C
	STO-160	155 to 165	68 to 74	Opens	30°F	17°C
	STO-170	165 to 175	74 to 79	Opens	30°F	17°C
	STC-170	162 to 178	72 to 81	Closes	30°F	17°C
	STO-175	170 to 180	77 to 82	Opens	15°F	8°C
D	STO-180	175 to 185	79 to 85	Opens	30°F	17°C
	STC-180	172 to 188	78 to 87	Closes	30°F	17°C
	STO-190	185 to 195	85 to 91	Opens	30°F	17°C
	STO-210	204 to 216	96 to 102	Opens	30°F	17°C
	STO-220	214 to 226	101 to 108	Opens	30°F	17°C
E	STC-225	217 to 232	103 to 111	Closes	30°F	17°C
	STO-230	224 to 236	107 to 113	Opens	30°F	17°C
	STC-240	229 to 251	109 to 122	Closes	100°F	56°C
	STO-250	244 to 256	118 to 124	Opens	30°F	17°C
	STO-325	315 to 335	157 to 169	Opens	50°F	28°C

### Common Ratings

Load	120 VAC	240 VAC	DIMENSIONS INCHES			Weight (oz.)	Agency Certif.
			L	Case W	H		
Resistive	15 Amps	10 Amps	1.23	1.32	0.37	0.2	UL
Inductive	3.0 FLA - 12.0 LRA	1.5 FLA - 6.0 LRA					CSA
Pilot Duty	125 VA	125 VA					VDE

\* Agency Certification Note: UL Recognized (File E19279 and MH-5304)  
CSA Certified (File LR19988)  
VDE Licensed



1 - Operating Range: Range of temperature at which disc thermostat performs switching function.

- 2 - Function:
- Opens - Normally closed circuit - opens within specified temperature range.
  - Closes - Normally open circuit - closes within specified temperature range.

3 - Differential: Temperature drop below operating range minimum necessary for disc to reset.

## X-ON Electronics

Largest Supplier of Electrical and Electronic Components

*Click to view similar products for [Thermostats](#) category:*

*Click to view products by [White-Rodgers](#) manufacturer:*

Other Similar products are found below :

[66F060-0099](#) [66F060-0396](#) [66L085-0477](#) [67F080-0356](#) [67L060-0368](#) [67L080-0038](#) [77877-00](#) [A1014005](#) [ASP200-22](#) [1831436](#) [1F78-151CB](#) [1NT08L-7399](#) [O54EAB240B-215Y](#) [C53GAB101A-081A](#) [22636-00](#) [2450 00210626](#) [2450 00880010](#) [2450CM 80020691](#) [2450RC 79080002](#) [2455R--01000844](#) [2455R 80580176](#) [2455R--90820376](#) [2455R--90820597](#) [2455RA-94170955](#) [2455RC-00980620](#) [2455RCG81170352](#) [2455RM03090005](#) [2455RM 80820736](#) [2455RM-90980499](#) [2455RP-91000430](#) [2455RP-91000433](#) [2455RP-91000436](#) [2455RP-91000442](#) [300004500021](#) [300004520005](#) [300004530001](#) [300005510137](#) [300005510148](#) [3000-46-29](#) [300100140436](#) [300100240216](#) [300100630004](#) [3001 00830006](#) [A1006505](#) [A1011005](#) [2450 06180001](#) [2450G 83950014](#) [2450RC-90820307](#) [2455R--00030829](#) [2455R--01000140](#)