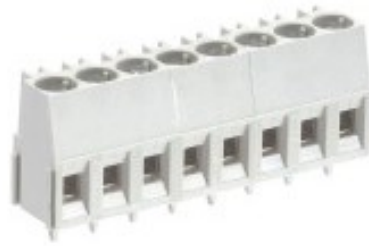


Datasheet

Item No. 25.163.3353.0

Printed circuit board terminal 8291 / 3 Z OB

PCB Terminal Block, 3-pole, with Isolation Plate, without marking and location cam, pitch 5,08 mm, series: 8291/3 Z OB



Item No.	25.163.3353.0
EAN	4015573176843
order unit	100 Piece(s)

Approvals



Technical data

General

Modular spacing	5.08 mm
Connection type	Screw connection
Soldering process	Wave soldering
Number of poles	3
Conductor to circuit board	180°
Number of levels	1
Integrated test socket	Yes
Insulation plate	Yes
Retaining pins	No
Marking	Yes

Technical data

Nominal cross section	2.5 mm ²
Rated current	16 A
Overvoltage Category I	1000 V
Overvoltage Category II	690 V
Overvoltage Category III	250 V
Rated impulse voltage	4 kV

Connection Data

Wire strip length	6.5 mm
Minimum cross section solid	0.14 mm ²
Maximum cross section solid	4 mm ²
Minimum cross section fine stranded	0.14 mm ²
Maximum cross section fine stranded	2.5 mm ²

Technical Data UL/CSA

Cross section UL	22-12 AWG
Voltage UL	300
Current field wiring	20 A
Current factory wiring	30 A
Cross section CSA	22-12 AWG
Voltage CSA	300 V
Current CSA	25 A

Other

Type of insulation material	Thermoplastic
Colour	Grey
Height	15 mm
Length	16.09 mm
Depth	9.5 mm
Material attachment screw	Steel
Material contact base	E-Cu
Material contact surface	Sn
Tightening torque note	If soldered additional mechanical fixing necessary

Accessories

Item. No.	Typ:	Description:
-----------	------	--------------

Drawings

X-ON Electronics

Largest Supplier of Electrical and Electronic Components

Click to view similar products for [Pluggable Terminal Blocks](#) category:

Click to view products by [Wieland](#) manufacturer:

Other Similar products are found below :

[57.510.0053](#) [MC 1.5/ 6-ST-3.5 GY AU](#) [ET02015000J0G](#) [860505](#) [860516](#) [860810](#) [GBPACX-12](#) [93.731.4953.0](#) [PV05-5,08-K](#) [PVP03-3,50](#)
[PVS02-5,00](#) [1-1986160-3](#) [1377680000](#) [1531000000](#) [1546228-5](#) [ELFP03110](#) [ELFP10210](#) [ELFT07250](#) [ELVD12100](#) [ELVF09400](#)
[ELVP03100](#) [ELXH071G0E](#) [1700410](#) [1746952](#) [1760336](#) [1809474](#) [1855000000](#) [1920846](#) [1920969](#) [19346](#) [1946309](#) [1950227](#) [1973592](#)
[19892](#) [21.310.1253.2](#) [25.193.0303.0](#) [25.320.1353.1](#) [25.320.4053.1](#) [25.320.4553.9](#) [25.320.4753.1](#) [25.320.5453.1](#) [25.326.3453.1](#) [25.330.1353.1](#)
[25.330.4853.1](#) [25.330.5153.1](#) [25.330.5353.1](#) [25.340.0353.1](#) [25.340.1053.1](#) [25.345.3553.0M001](#) [25.600.4053.0](#)