



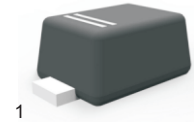
SOD523



## PINNING

## PIN DESCRIPTION

- 1 Cathode
- 2 Anode



Top View  
Simplified outline SOD-523 and symbol

## FEATURES

- For surface mounted applications
- Fast reverse recovery time
- Ideal for automated placement

## Maximum Ratings at 25 °C

Parameter	Symbols	1N4148WT	Units
Non-Repetitive Peak Reverse Voltage	$V_{RM}$	100	V
Reverse Voltage	$V_R$		V
Peak Repetitive Reverse Voltage	$V_{RRM}$	75	V
Working Peak Reverse Voltage	$V_{RWM}$		V
RMS Reverse Voltage	$V_{R(RMS)}$	53	V
Average Rectified Output Current	$I_O$	150	mA
Non-repetitive Peak Forward Surge Current@t= 8.3ms	$I_{FSM}$	0.8	A
Power Dissipation	$P_D$	150	mW
Junction Temperature	$T_j$	150	°C
Storage Temperature	$T_{stg}$	-55 ~ +150	°C

## ELECTRICAL CHARACTERISTICS (Ta=25°C unless otherwise specified)

Parameter	Symbols	Test conditions	Min	Typ	Max	Units
Reverse voltage	$V_{(BR)}$	$I_R = 1\mu A$	75			V
Reverse current	$I_R$	$V_R = 75V$			1	$\mu A$
		$V_R = 20V$			25	nA
Forward voltage	$V_F$	$I_F = 1\text{ mA}$			0.715	V
		$I_F = 10\text{ mA}$			0.855	V
		$I_F = 50\text{ mA}$			1	V
		$I_F = 150\text{ mA}$			1.25	V
Total capacitance	$C_{tot}$	$V_R = 0V, f = 1\text{ MHz}$			2	pF
Reverse recovery time	$t_{rr}$	$I_F = I_R = 10\text{ mA}, I_{rr} = 0.1 * I_R, R_L = 100\ \Omega$			4	ns

Fig.1 Power Derating Curve

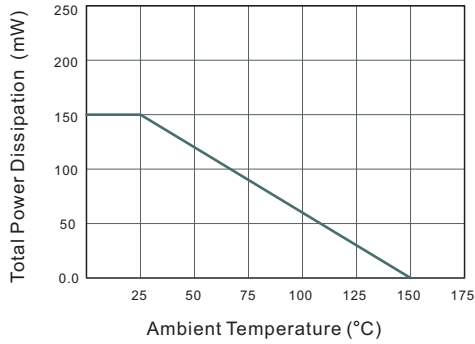


Fig.2 Typical Reverse Characteristics

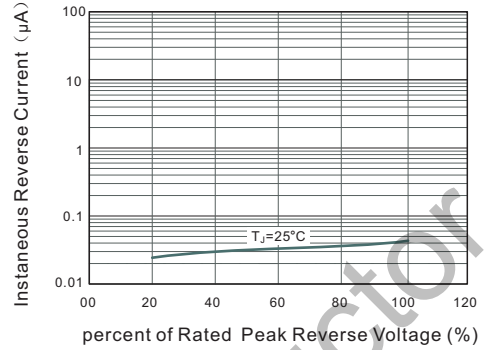


Fig.3 Typical Instantaneous Forward Characteristics

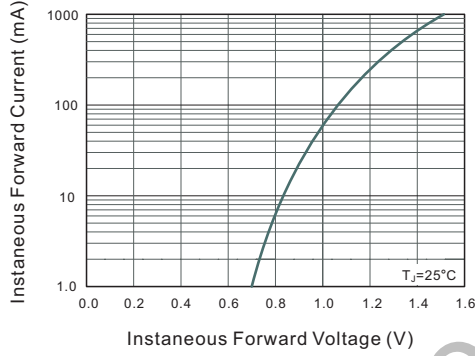
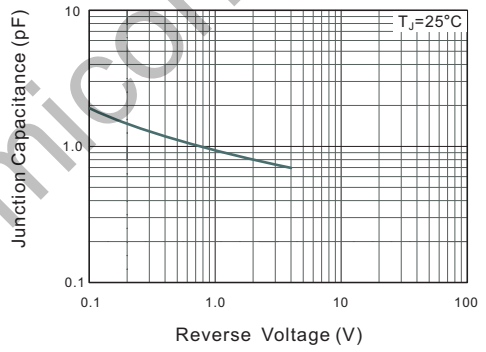


Fig.4 Typical Junction Capacitance

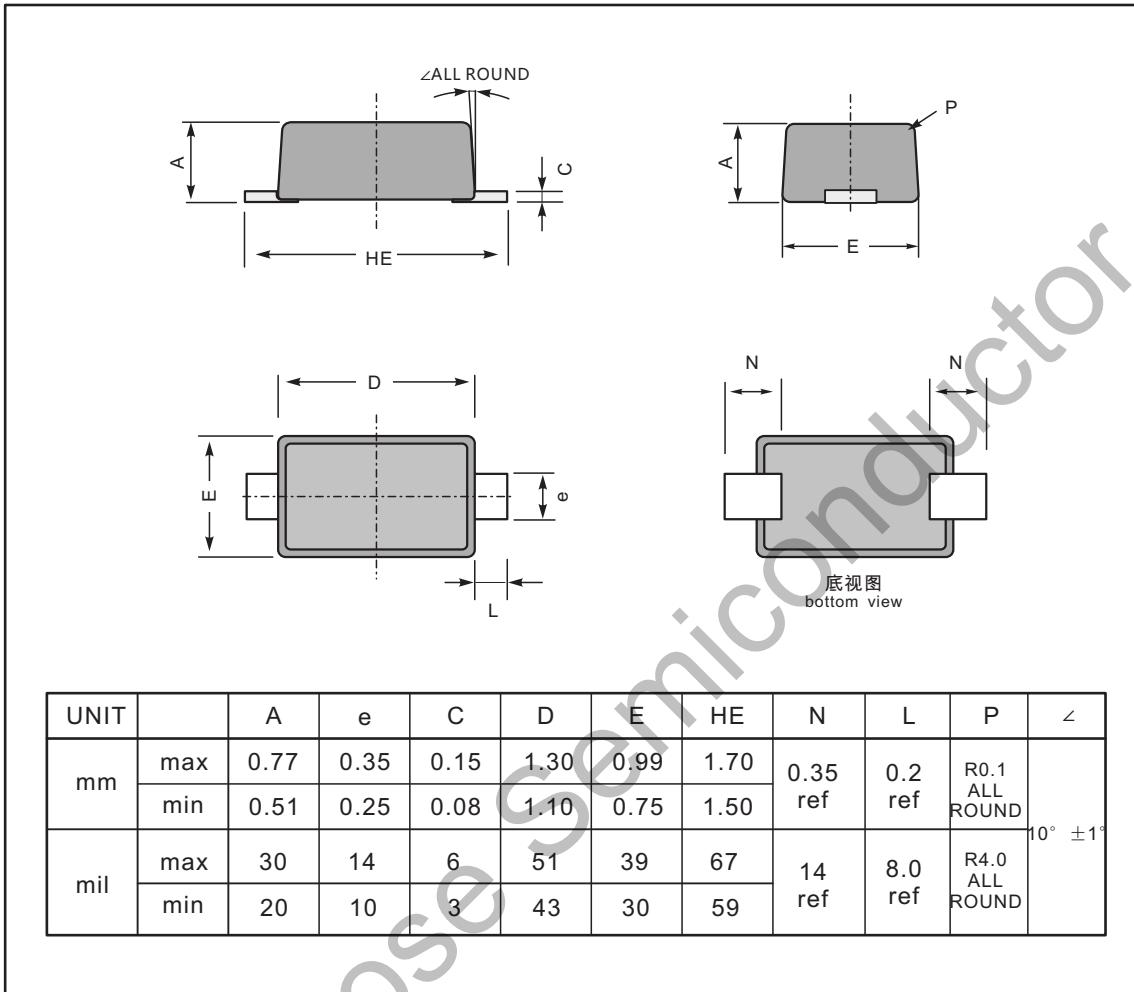


WildGoose Semiconductor

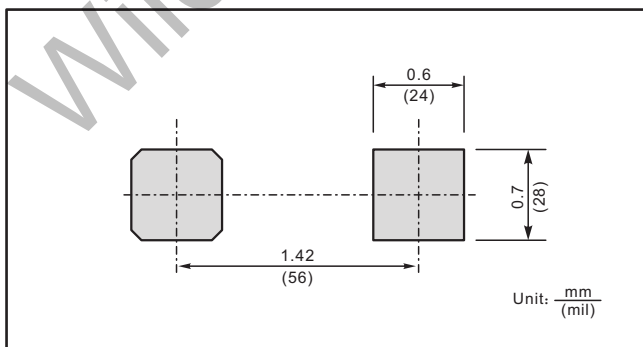
PACKAGE OUTLINE

Plastic surface mounted package; 2 leads

SOD-523



The recommended mounting pad size



Marking

Type number	Marking code
1N4148WT	T4

## X-ON Electronics

Largest Supplier of Electrical and Electronic Components

*Click to view similar products for* [Diodes - General Purpose, Power, Switching category:](#)

*Click to view products by* [Wild Goose manufacturer:](#)

Other Similar products are found below :

[MMBD3004S-13-F](#) [1N3611](#) [NTE156A](#) [NTE6244](#) [1SS400CST2RA](#) [SDAA13](#) [SHN2D02FUTW1T1G](#) [1N4449](#) [1N456A](#) [1N914BTR](#)  
[D291S45T](#) [BAS 16-02L E6327](#) [BAS 16-02V H6327](#) [BAS 21U E6327](#) [BAS 28 E6327](#) [BAW56DWQ-7-F](#) [BAW75-TAP](#) [MM230L-CAA](#)  
[IDW40E65D1](#) [JAN1N3600](#) [JAN1N4454UR-1](#) [SMMSD4148T3G](#) [BYW95B/A52A](#) [NSVDAN222T1G](#) [CDSZC01100-HF](#) [BAV70HDW-7](#)  
[BAS28-7](#) [JANTX1N6640](#) [BAW56HDW-13](#) [BAS28 TR](#) [VS-HFA04SD60STR-M3](#) [1SS388-TP](#) [BAV99TQ-13-F](#) [BAV99HDW-13](#) [1N4004](#)  
[MMDB30-E28X](#) [LS4148](#) [IDV15E65D2](#) [W0503RH200S0L](#) [W0503SH200S0L](#) [M0268SJ200NLF](#) [M0268RJ200NLF](#) [S3MBF](#) [US1J](#)  
[DAN217U-TP](#) [SHV-06JNS-Q](#) [IDW30C65D1](#) [IDW80C65D1](#) [VS-HFA30TA60CSR-M3](#) [M1MA152WAT1](#)