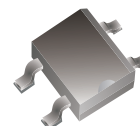
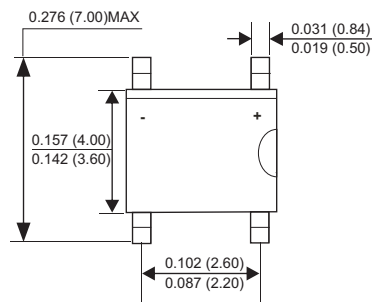




MB6S - MB10S Bridge Rectifiers

Features

- Surge overload rating: 30 amperes peak.
- Glass passivated junction.
- Low leakage.



MBS

Absolute Maximum Ratings * $T_A = 25^\circ\text{C}$ unless otherwise noted

Symbol	Parameter	Value			Units
		MB6S	MB8S	MB10S	
V_{RRM}	Maximum Repetitive Peak Reverse Voltage	600	800	1000	V
V_{RMS}	Maximum RMS Voltage	420	560	700	V
V_{DC}	Maximum DC Blocking Voltage	600	800	1000	V
$I_{F(AV)}$	Average Rectified Forward Current *	0.8			A
I_{FSM}	Peak Forward Surge Current **	30			A
I^2t	I^2t Rating for fusing ($t < 8.3\text{ms}$)	3.735			A^2S
T_J	Operating Junction Temperature Range	-55 to +150			$^\circ\text{C}$
T_{STG}	Storage Temperature Range	-55 to +150			$^\circ\text{C}$

* 60Hz sine wave, R-load, $T_A = 25^\circ\text{C}$ on FR-4 PCB.

** 60Hz sine wave, Non-repetitive 1 cycle peak value, $T_J = 25^\circ\text{C}$.

Thermal Characteristics*

Symbol	Parameter	Typ.	Units
$R_{\theta JA}$	Thermal Resistance, Junction-Ambient		
	- Measurement with Dual Dice	280	$^\circ\text{C}/\text{W}$
	- Measurement with Single Die	175	$^\circ\text{C}/\text{W}$
Ψ_{JL}	Thermal Characterization, Junction to Lead		
	- Measured at Anode pin	70	$^\circ\text{C}/\text{W}$
	- Measured at Cathode pin	20	$^\circ\text{C}/\text{W}$

* Device mounted on FR-4 PCB with board size = 76.2mm x 114.3mm (JESD51-3 standards)

Electrical Characteristics $T_A = 25^\circ\text{C}$ unless otherwise specified

Symbol	Parameter	Test condition	Value	Units
V_F	Maximum Forward Voltage	$I_F = 1\text{A}$, Pulse measurement, Per diode	1.1	V
I_R	Maximum Reverse Current	@ V_{RRM} , Pulse measurement, Per diode	10	μA
C_J	Typical Junction Capacitance	$V_R = 4\text{V}$, $f = 1\text{MHz}$	10	pF

Typical Characteristics

Fig.1 - Maximum Forward Current Derating Curve

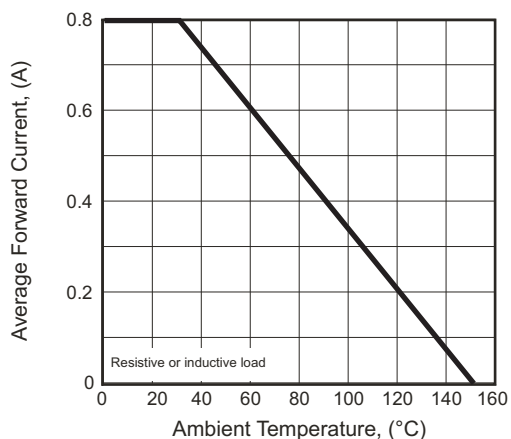


Fig.2 - Maximum Non-repetitive Forward Surge Current Per Bridge Element

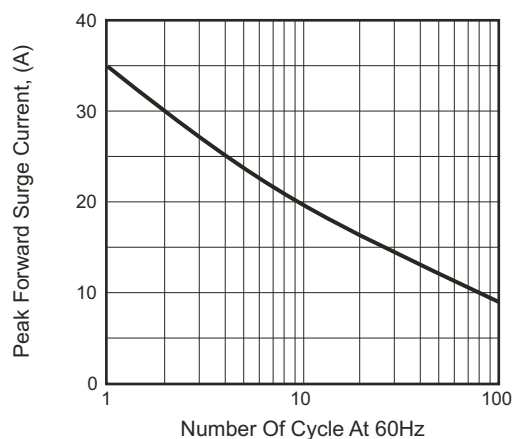


Fig.3 - Typical Instantaneous Forward Characteristics Per Bridge Element

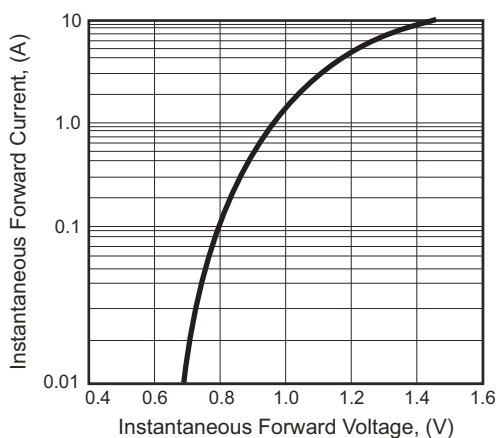
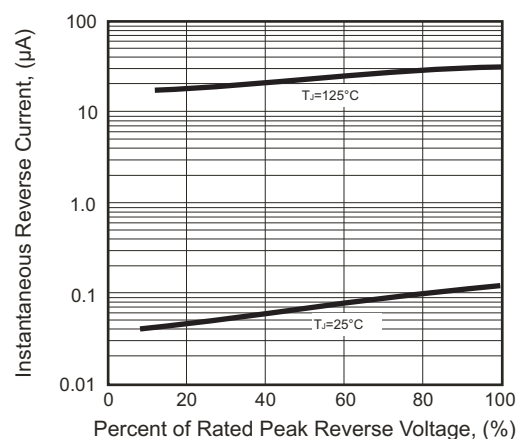


Fig.4 - Typical Reverse Characteristics Per Bridge Element



X-ON Electronics

Largest Supplier of Electrical and Electronic Components

Click to view similar products for [Bridge Rectifiers](#) category:

Click to view products by [Wild Goose](#) manufacturer:

Other Similar products are found below :

[MB252](#) [MB356G](#) [MB358G](#) [GBJ1504-BP](#) [GBU10B-BP](#) [GBU15K-BP](#) [GBU4A-BP](#) [GBU4D-BP](#) [DB101-BP](#) [DF01](#) [DF10SA-E345](#) [KBPC50-10S](#) [RS405GL-BP](#) [GBJ1502-BP](#) [GBU6M](#) [TB102M](#) [MB1510](#) [MB86](#) [TL401G](#) [MDA920A2](#) [TU602](#) [TU810](#) [MP5010W-BP](#) [MP501W-BP](#) [MP502-BP](#) [KBPC25-02](#) [VBO160-12NO7](#) [VS-110MT120KPBF](#) [VS-60MT80KPBF](#) [DB105-BP](#) [DF1510S](#) [VS-40MT160PAPBF](#) [GBU4G-BP](#) [GSIB15A80-E3/45](#) [DB104-BP](#) [D3SB60](#) [TB354](#) [GBJ2504-BP](#) [26MB100A](#) [B1S-G](#) [VS-40MT160KPBF](#) [VUO162-16NO7](#) [ABS10-G](#) [GBU6B-BP](#) [GBJ1508-BP](#) [BR5010-G](#) [ABS6-G](#) [B125C800G-E4/51](#) [MSB15MH-13](#) [LBS10-13](#)