

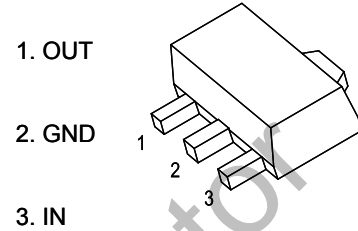
78L08

Three-terminal positive voltage regulator

Features:

- Maximum Output current I_o : 0.1A
- Output voltage V_o : 8V
- Continuous total dissipation
 P_D : 0.5W ($T_a = 25^\circ\text{C}$)

SOT-89-3L



Marking: 78L08

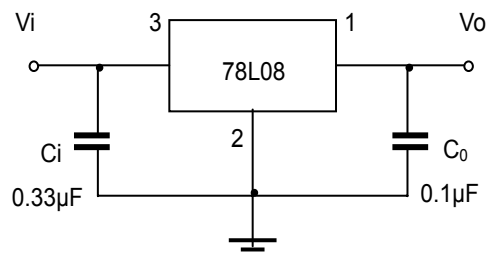
Absolute Maximum Ratings (Operating temperature range applies unless otherwise specified)

Parameter	Symbol	Value	Units
Input Voltage	V_I	30	V
Operating Junction Temperature Range	T_{OPR}	0~+150	$^\circ\text{C}$
Storage Temperature Range	T_{STG}	-55~+150	$^\circ\text{C}$

Electrical Characteristics at Specified Virtual Junction Temperature

Parameter	Symbol	Test conditions	Min	Typ	Max	Unit	
Output voltage	V_o	25°C	7.7	8.0	8.3	V	
		0-125 $^\circ\text{C}$	$10.5\text{V} \leq V_I \leq 23\text{V}, I_o = 1\text{mA} \sim 40\text{mA}$	7.6	8.0	8.4	V
			$I_o = 1\text{mA} \sim 70\text{mA}$	7.6	8.0	8.4	V
Load Regulation	ΔV_o	$I_o = 1\text{mA} \sim 100\text{mA}, 25^\circ\text{C}$		18	80	mV	
		$I_o = 1\text{mA} \sim 40\text{mA}, 25^\circ\text{C}$		10	40	mV	
Line regulation	ΔV_o	$10.5\text{V} \leq V_I \leq 23\text{V}, 25^\circ\text{C}$		42	175	mV	
		$11\text{V} \leq V_I \leq 23\text{V}, 25^\circ\text{C}$		36	125	mV	
Quiescent Current	I_q	25°C		4	6	mA	
Quiescent Current Change	ΔI_q	$11\text{V} \leq V_I \leq 23\text{V}, 0-125^\circ\text{C}$			1.5	mA	
		$1\text{mA} \leq I_o \leq 40\text{mA}, 0-125^\circ\text{C}$			0.1	mA	
Output Noise Voltage	V_N	$10\text{Hz} \leq f \leq 100\text{KHz}, 25^\circ\text{C}$		54		μV	
Ripple Rejection	RR	$13\text{V} \leq V_I \leq 23\text{V}, f = 120\text{Hz}, 0-125^\circ\text{C}$	37	46		dB	
Dropout Voltage	V_d	25°C		1.7		V	

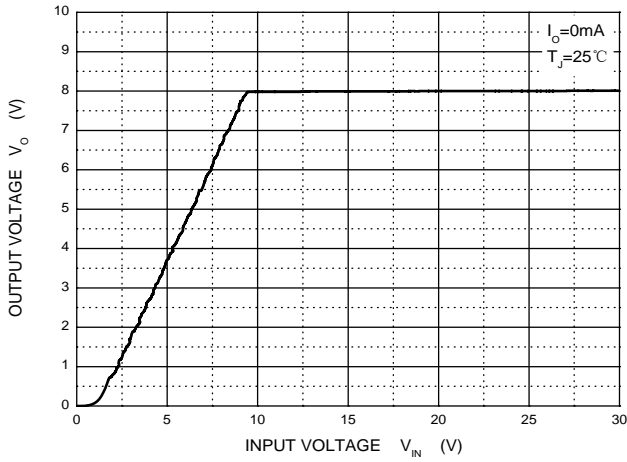
TYPICAL APPLICATION



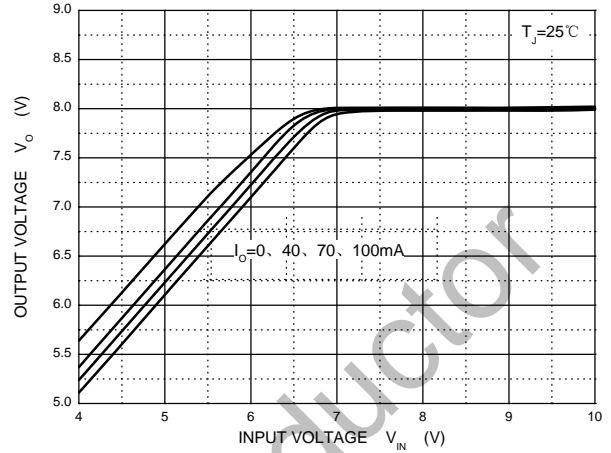
Note: Bypass capacitors are recommended for optimum stability and transient response and should be located as close as possible to the regulators.

RATING AND CHARACTERISTIC CURVES (78L08)

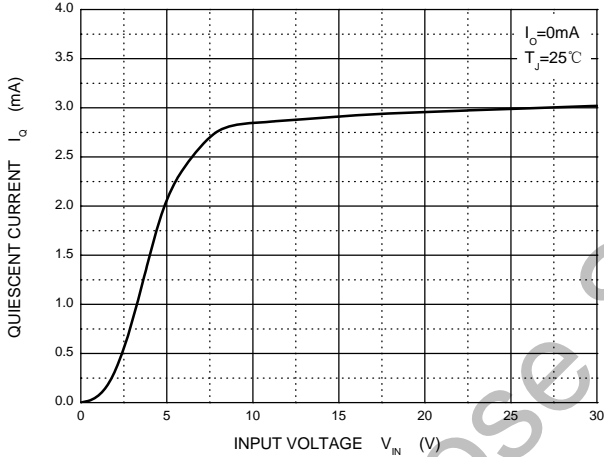
Output Characteristics



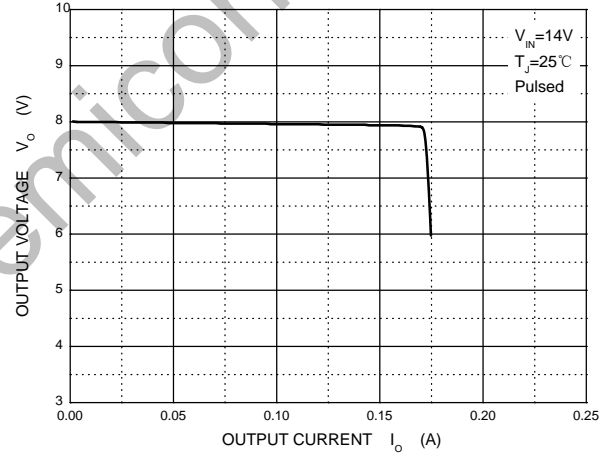
Dropout Characteristics



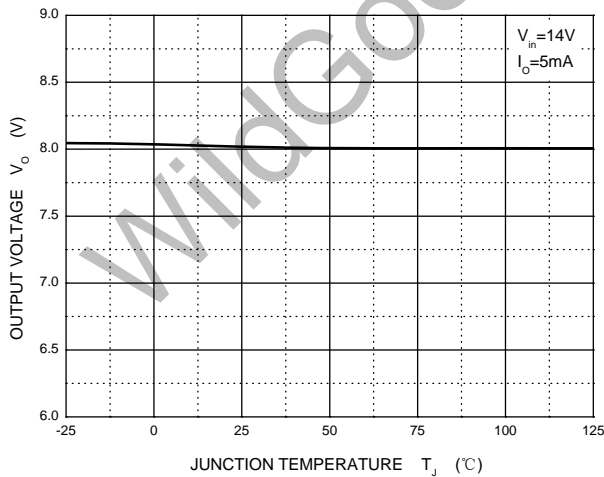
Quiescent Current vs Input Voltage



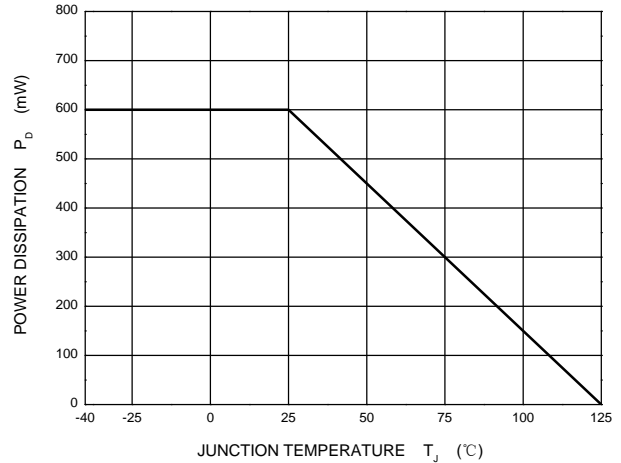
Current Cut-off Grid Voltage



Output Voltage vs Junction Temperature



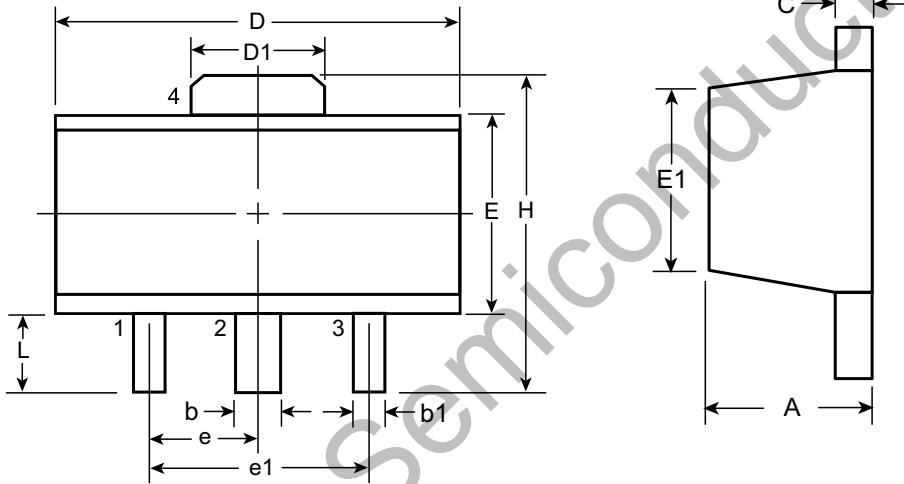
Power Derating Curve



Package Dimension

SOT-89

Unit:mm



Top View

Side View

Symbol		A	b	b1	C	D	D1	E	E1	e	e1	H	L	
Dimensions (mm)	MIN	1.40	0.44	0.36	0.3	4.40	1.50	2.29	2.00 ^t	1.50 BSC	3.00 BSC	3.94	0.89	
	NOM	-	-	-	-	-	-	-	-			-	-	-
	MAX	1.60	0.56	0.48	0.5	4.60	1.75	2.60	2.29			4.25	1.20	

Dimensions in mm

X-ON Electronics

Largest Supplier of Electrical and Electronic Components

Click to view similar products for [Linear Voltage Regulators](#) category:

Click to view products by [Wild Goose](#) manufacturer:

Other Similar products are found below :

[LV5684PVD-XH](#) [MCDTSA6-2R](#) [L7815ACV-DG](#) [714954EB](#) [ZMR500QFTA](#) [BA033LBSG2-TR](#) [LV5680P-E](#) [L79M05T-E](#) [L78LR05D-MA-E](#) [NCV317MBTG](#) [NTE7227](#) [MP2018GZD-33-P](#) [MP2018GZD-5-P](#) [LV5680NPVC-XH](#) [LT1054CN8](#) [ZTS6538SE](#) [UA78L09CLP](#) [UA78L09CLPR](#) [CAT6221-PPTD-GT3](#) [MC78M09CDTRK](#) [NCV51190MNTAG](#) [78M05](#) [HT7150-1](#) [UM1540DB-18](#) [XC6234H281VR-G](#) [WL2834CA-6/TR](#) [TPL730F33-5TR](#) [TLS850F1TA](#) [V50](#) [TPS549B22RVFR](#) [UM1540DB-33](#) [WL9200P3-50B](#) [WL9100P3-33B](#) [WL9005D4-33](#) [XC6219B152MR](#) [WL2855K33-3/TR](#) [PJ54BM33SE](#) [PJ9500M25SA](#) [MD7218E33PC1](#) [H7533-2PR](#) [SK7812AU](#) [SD1A30](#) [78L33](#) [TP78L33T3](#) [L78L33ACUTR](#) [SK6513ST3A-50](#) [SK6054D4-09](#) [SK6054D4-18](#) [SK6054D4-11](#) [SK6054D4-10](#) [LM79L12F](#)