



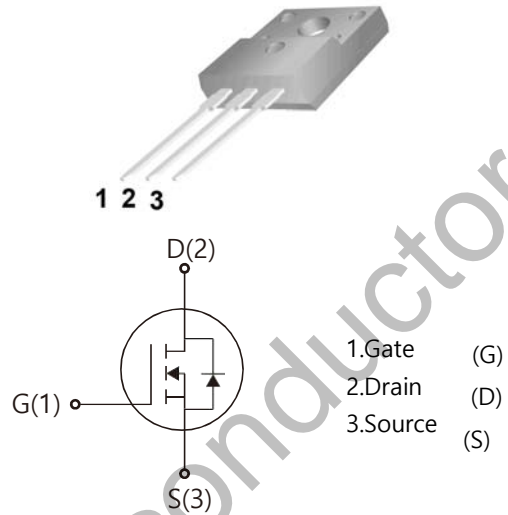
WGF65R900G

Features:

- Super Junction technology
- Much lower Ron*A Performance for On-state efficiency
- Better efficiency due to very low FOM
- Ultra-fast body diode
- VDSS=650V, ID=6A
- $R_{DS(on)} : 0.78\Omega$ (Typ) @VG=10V



TO-220F



Absolute Maximum Ratings

Parameter	Symbol	Value	Unit
Drain-source voltage	V_{DS}	650	V
Continuous drain current	I_D	6.0	A
$T_C = 25^\circ C$		4.0	
$T_C = 100^\circ C$			
Pulsed drain current ($T_C = 25^\circ C$, t_p limited by T_{jmax})	$I_{D\ pulse}$	25	A
Avalanche energy, single pulse ($L=60mH$, $R_g=30\Omega$)	E_{AS}	60	mJ
Gate-Source voltage	V_{GS}	± 30	V
Power dissipation ($T_C = 25^\circ C$)	P_{tot}	71	W
Operating junction and storage temperature	T_j, T_{stg}	-55...+150	$^\circ C$

Thermal Resistance

Parameter	Symbol	Value	Unit
Thermal resistance, junction – case. Max	R_{thJC}	1.76	$^\circ C/W$
Thermal resistance, junction – ambient. Max	R_{thJA}	134	

Electrical Characteristic (at $T_j = 25\text{ }^\circ\text{C}$, unless otherwise specified)

Parameter	Symbol	Value			Unit	Test Condition
		min.	typ.	max.		
Static Characteristic						
Drain-source breakdown voltage	BV_{DSS}	700	-	-	V	$V_{GS}=0V, I_D=250\mu A$
Gate threshold voltage	$V_{GS(th)}$	3	3.5	4	V	$V_{DS}=V_{GS}, I_D=250\mu A$
Zero gate voltage drain current	I_{DSS}	-	-	1	μA	$V_{DS}=700V, V_{GS}=0V$ $T_C=25^\circ C$ $T_C=150^\circ C$
Gate-source leakage current	I_{GSS}	-	-	100	nA	$V_{GS}=\pm 30V, V_{DS}=0V$
Drain-source on-state resistance	$R_{DS(on)}$	-	0.78	0.90	Ω	$V_{GS}=10V, I_D=3A,$ $T_C=25^\circ C$ $T_C=150^\circ C$
Transconductance	g_{fs}	-	5	-	S	$V_{DS}=20V, I_D=3A$
Dynamic Characteristic						
Input Capacitance	C_{iss}	-	327	-	pF	$V_{GS}=0V, V_{DS}=100V, f=1MHz$
Output Capacitance	C_{oss}	-	25	-		
Reverse Transfer Capacitance	C_{rss}	-	23	-		
Gate Total Charge	Q_G	-	11	-	nC	$V_{GS}=10V, V_{DS}=480V, I_D=3A,$ $f=1MHz$
Gate-Source charge	Q_{gs}	-	2.5	-		
Gate-Drain charge	Q_{gd}	-	4.6	-		
Turn-on delay time	$t_{d(on)}$	-	12.6	-	ns	$T_j=25^\circ C, V_{GS}=10V, I_D=3A,$ $V_{DS}=400V, R_g=25\Omega$
Rise time	t_r	-	13.4	-		
Turn-off delay time	$t_{d(off)}$	-	50	-		
Fall time	t_f	-	61	-		
Gate resistance	R_G	-	9.0	-	Ω	$V_{GS}=0V, V_{DS}=0V, f=1MHz$

Body Diode Characteristic

Parameter	Symbol	Value			Unit	Test Condition
		min.	typ.	max.		
Body Diode Forward Voltage	V_{SD}	0.5	0.84	1	V	$V_{GS}=0V, I_{SD}=3A$
Body Diode Reverse Recovery Time	t_{rr}	-	185	-	ns	$I_{sd}=3A$ $dI/dt=100A/\mu s, V_{ds}=100V$
Body Diode Reverse Recovery Charge	Q_{rr}	-	1.47	-	μC	

Typical Performance Characteristics

Fig 1. Output Characteristics (Tj=25°C)

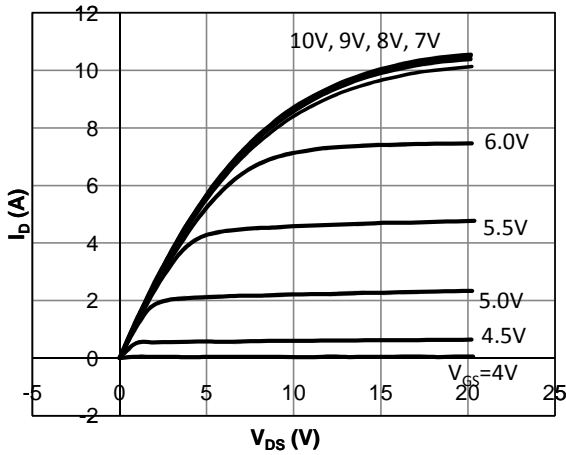


Fig 2. Output Characteristics (Tj=150°C)

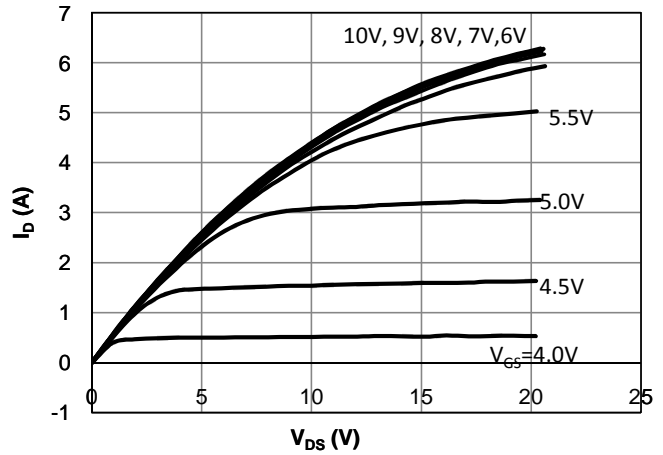


Fig 3: Transfer Characteristics

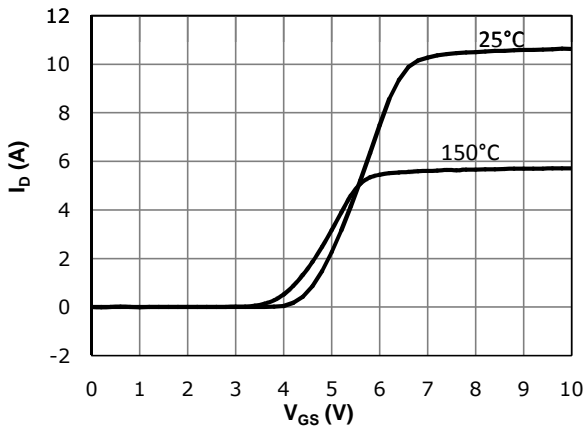


Fig 4: V_{TH} Vs Tj Temperature Characteristics

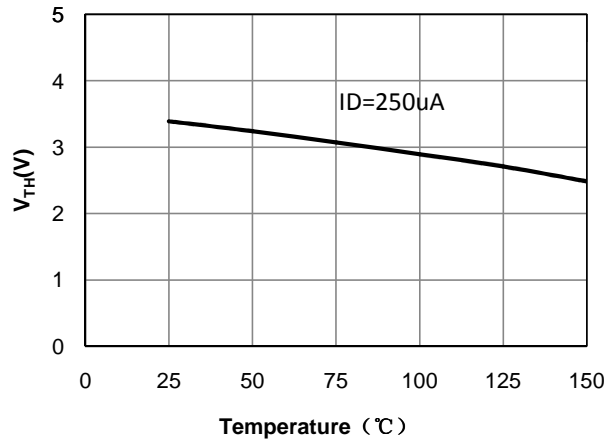


Fig 5: $R_{DS(on)}$ Vs I_{DS} Characteristics ($T_c = 25^\circ\text{C}$)

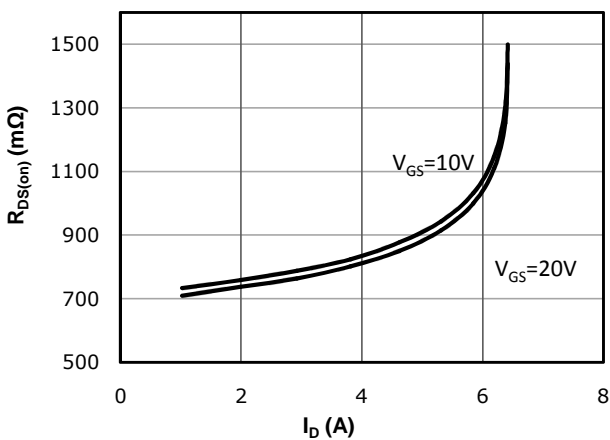


Fig 6: $R_{DS(on)}$ vs. Temperature

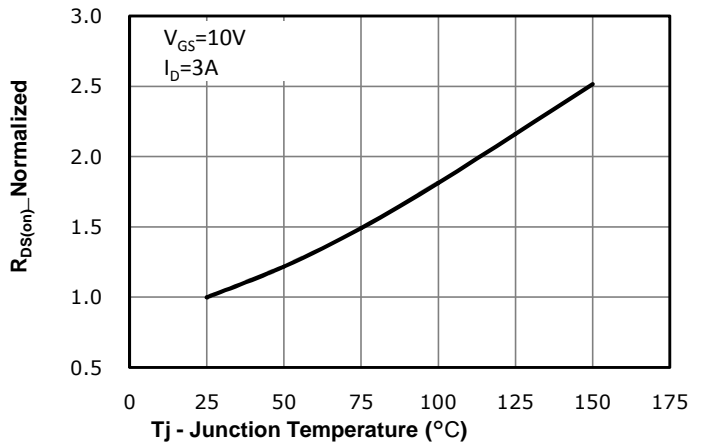


Fig 7: BVdss vs. Temperature

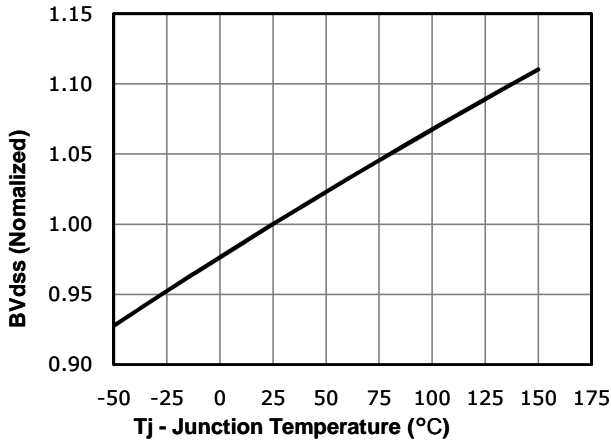


Fig 8: Rds(on) vs Gate Voltage

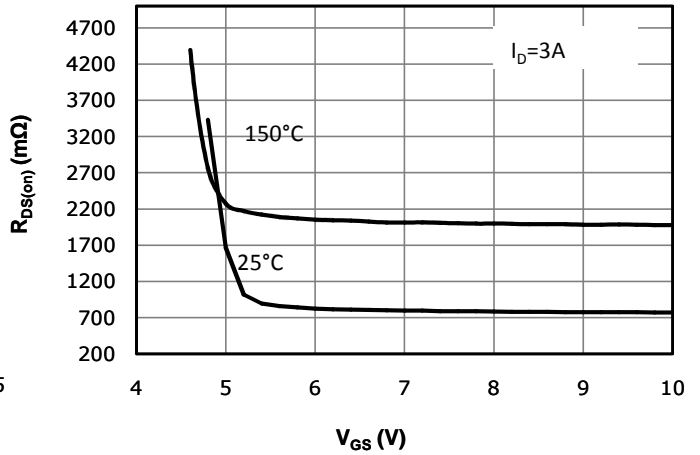


Fig 9: Body-diode Forward Characteristics

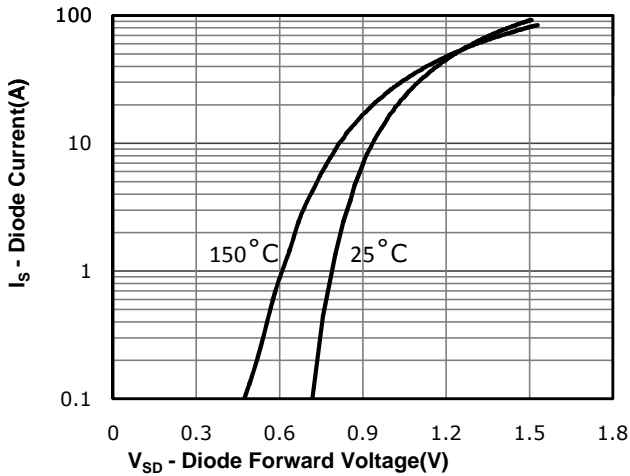


Fig 10: Gate Charge Characteristics

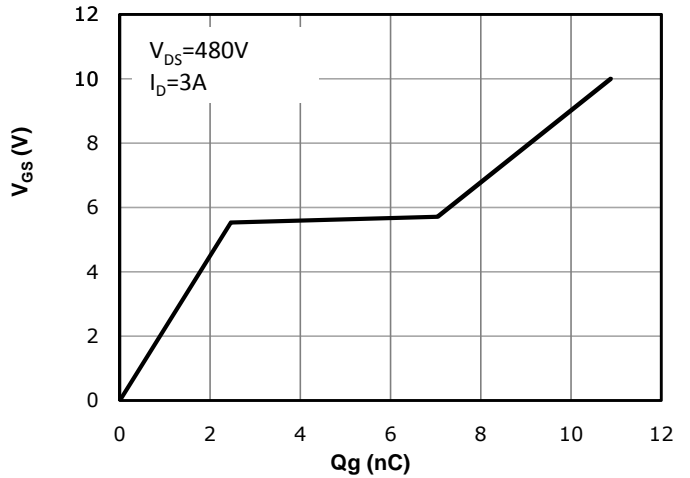


Fig 11: Capacitance Characteristics

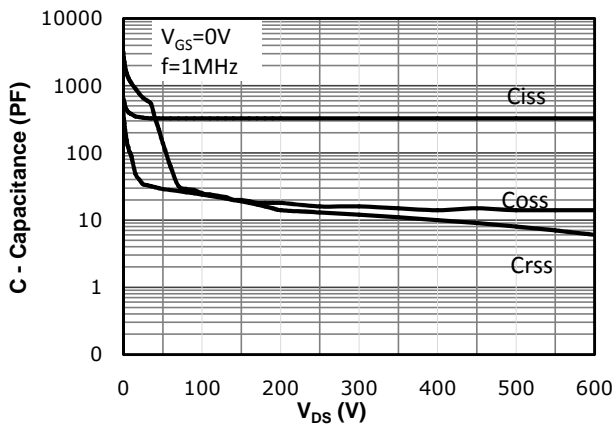


Fig 12: Safe Operating Area

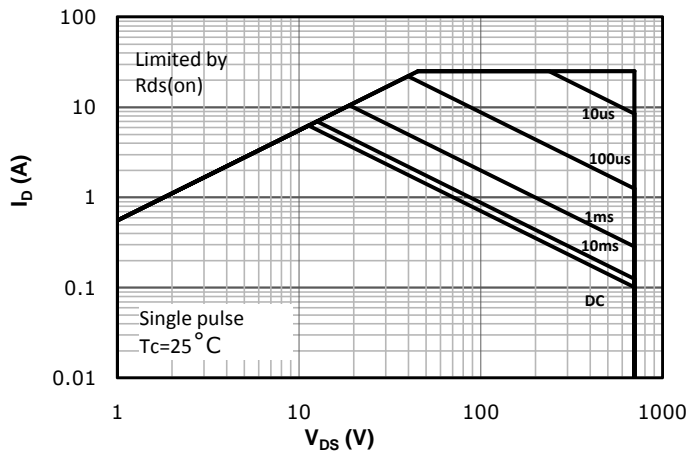
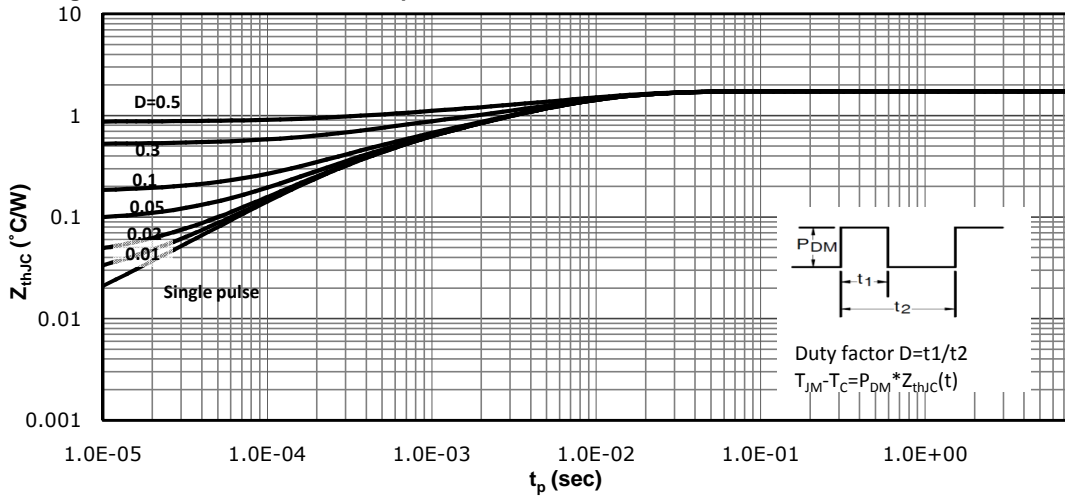


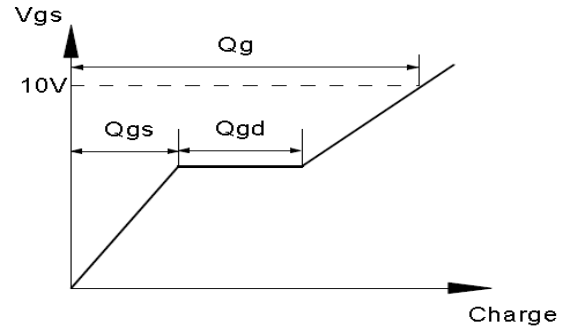
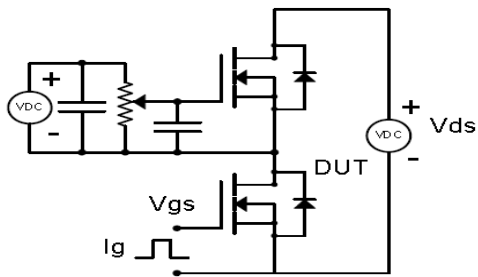
Fig 13: Max. Transient Thermal Impedance



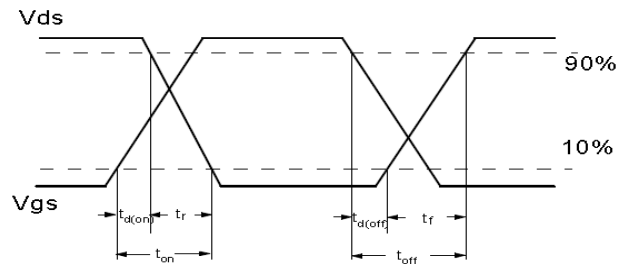
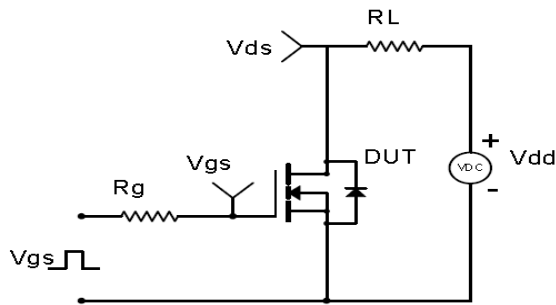
WildGoose Semiconductor

Test Circuit & Waveform

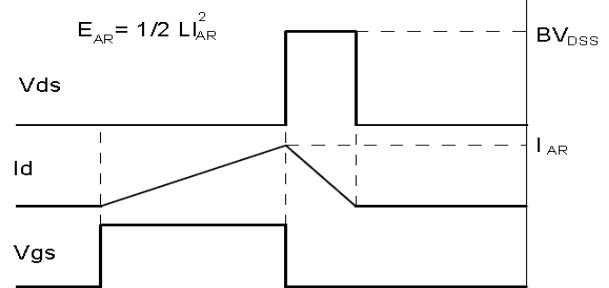
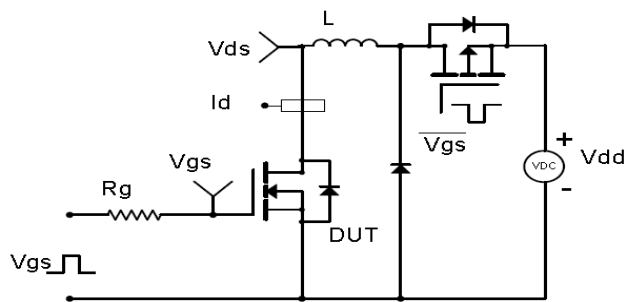
Gate Charge Test Circuit & Waveform



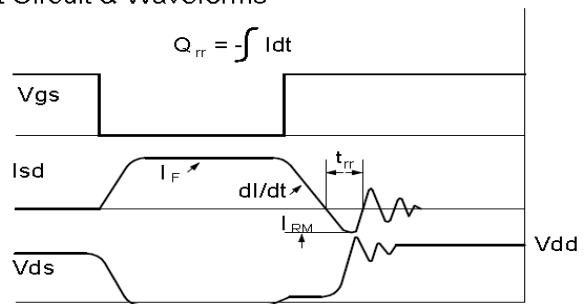
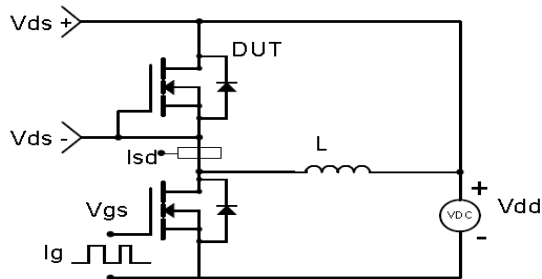
Resistive Switching Test Circuit & Waveforms



Unclamped Inductive Switching (UIS) Test Circuit & Waveforms



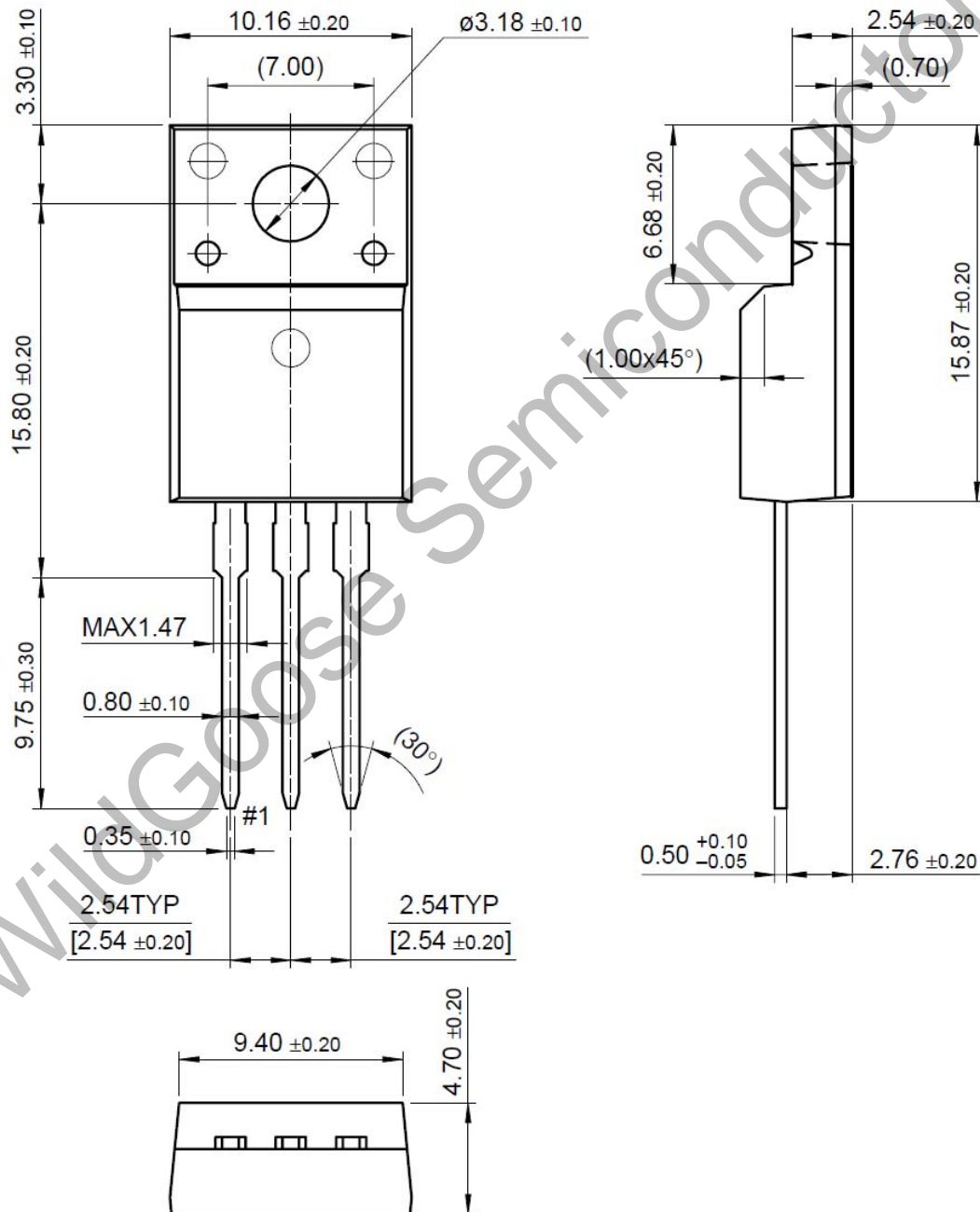
Diode Recovery Test Circuit & Waveforms



Package Dimension

TO-220F

Unit: mm



X-ON Electronics

Largest Supplier of Electrical and Electronic Components

Click to view similar products for [MOSFET](#) category:

Click to view products by [Wild Goose](#) manufacturer:

Other Similar products are found below :

[IRFD120](#) [JANTX2N5237](#) [BUK455-60A/B](#) [MIC4420CM-TR](#) [VN1206L](#) [NDP4060](#) [SI4482DY](#) [IPS70R2K0CEAKMA1](#) [SQD23N06-31L-GE3](#)
[TK16J60W,S1VQ\(O](#) [2SK2614\(TE16L1,Q\)](#) [DMN1017UCP3-7](#) [DMN1053UCP4-7](#) [SQJ469EP-T1-GE3](#) [NTE2384](#) [DMC2700UDMQ-7](#)
[DMN2080UCB4-7](#) [DMN61D9UWQ-13](#) [US6M2GTR](#) [DMN31D5UDJ-7](#) [DMP22D4UFO-7B](#) [DMN1006UCA6-7](#) [DMN16M9UCA6-7](#)
[STF5N65M6](#) [IRF40H233XTMA1](#) [STU5N65M6](#) [DMN6022SSD-13](#) [DMN13M9UCA6-7](#) [DMTH10H4M6SPS-13](#) [DMN2990UFB-7B](#)
[IPB80P04P405ATMA2](#) [2N7002W-G](#) [MCAC30N06Y-TP](#) [MCQ7328-TP](#) [NTMC083NP10M5L](#) [BXP7N65D](#) [BXP4N65F](#) [AOL1454G](#)
[WMJ80N60C4](#) [BXP2N20L](#) [BXP2N65D](#) [BXT1150N10J](#) [BXT1700P06M](#) [TSM60NB380CP](#) [ROG](#) [RQ7L055BGTGR](#) [DMNH15H110SK3-13](#)
[SLF10N65ABV2](#) [BSO203SP](#) [BSO211P](#) [IPA60R230P6](#)