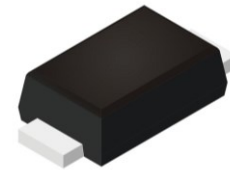
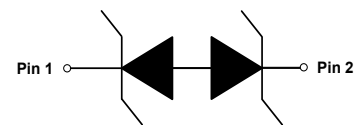


ESD56231L24
1 Line, Bi-directional, Transient Voltage Suppressor
<http://www.sh-willsemi.com>
Descriptions

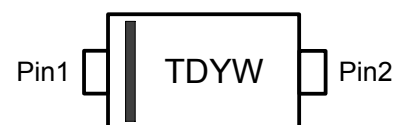
The ESD56231L24 is a Bi-directional TVS (Transient Voltage Suppressor). It is specifically designed to protect sensitive electronic components which are connected to power lines, from over-stress caused by ESD (Electrostatic Discharge), EFT (Electrical Fast Transient) and Lightning.

The ESD56231L24 may be used to provide ESD protection up to $\pm 30\text{kV}$ (contact and air discharge) according to IEC61000-4-2, and withstand peak pulse current up to 170A (8/20 μs) according to IEC61000-4-5.

The ESD56231L24 is available in SOD-123FL package. Standard products are Pb-free and Halogen-free.


SOD-123FL

Circuit diagram
Features

- Reverse stand-off voltage: $\pm 24\text{V}$ Max.
- Transient protection for each line according to IEC61000-4-2 (ESD): $\pm 30\text{kV}$ (contact and air discharge)
IEC61000-4-4 (EFT): 80A (5/50ns)
IEC61000-4-5 (surge): 170A (8/20 μs)
- Capacitance: $C_J = 400\text{pF}$ typ.
- Low leakage current
- Low clamping voltage
- Solid-state silicon technology



TD = Device code

Y = Year code

W = Week code

Marking (Top View)
Applications

- Power lines
- Cellular handsets
- Tablets
- Microprocessors
- Portable Electronics

Order information

Device	Package	Shipping
ESD56231L24-2/TR	SOD-123FL	3000/Tape&Reel

Absolute maximum ratings

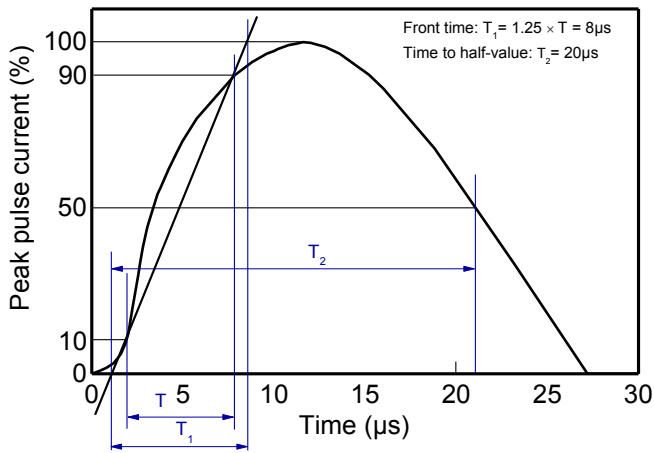
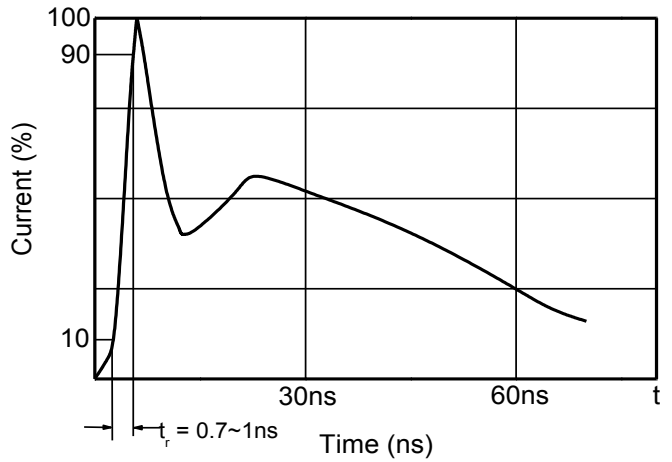
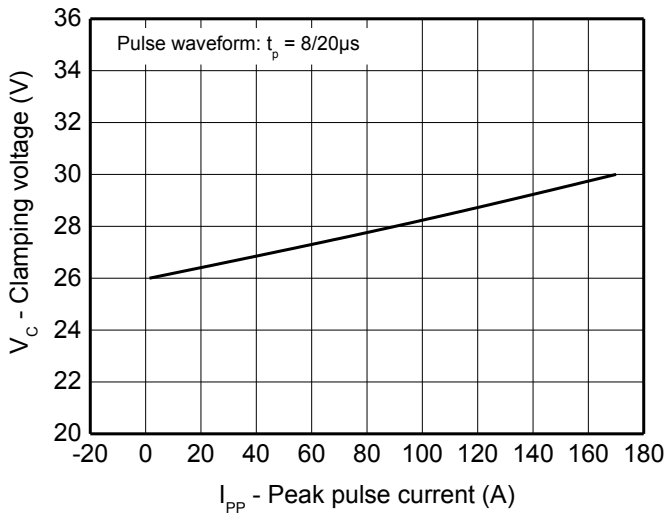
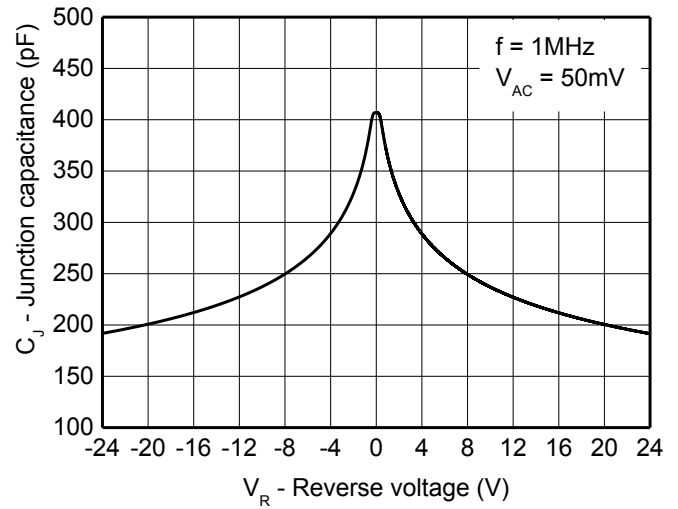
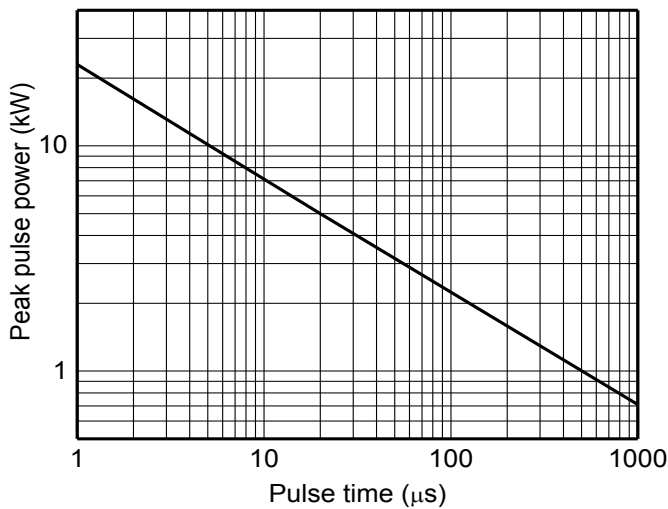
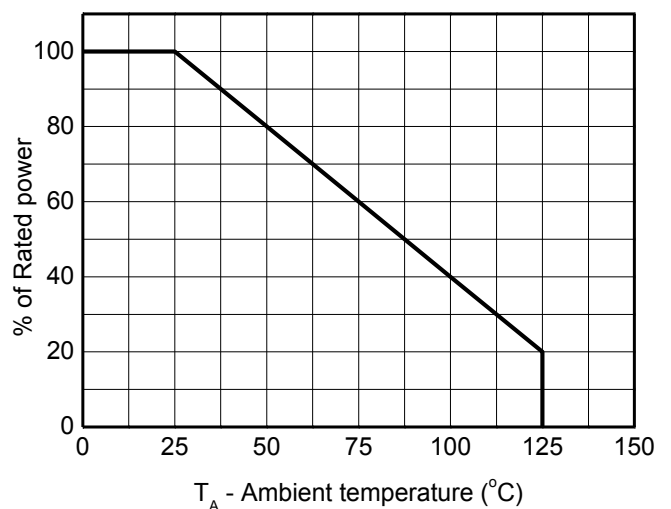
Parameter	Symbol	Rating	Unit
Peak pulse power ($t_p = 8/20\mu s$)	P_{pk}	5000	W
Peak pulse current ($t_p = 8/20\mu s$)	I_{PP}	170	A
ESD according to IEC61000-4-2 air discharge	V_{ESD}	± 30	kV
ESD according to IEC61000-4-2 contact discharge		± 30	
Junction temperature	T_J	125	$^{\circ}C$
Operating temperature	T_{OP}	-40~85	$^{\circ}C$
Lead temperature	T_L	260	$^{\circ}C$
Storage temperature	T_{STG}	-55~150	$^{\circ}C$

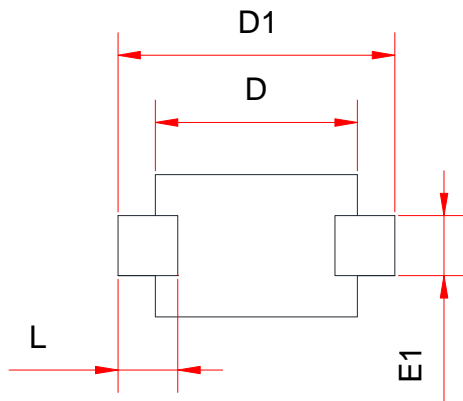
Electrical characteristics ($T_A=25^{\circ}C$, unless otherwise noted)

Parameter	Symbol	Condition	Min.	Typ.	Max.	Unit
Reverse stand-off voltage	V_{RWM}				± 24	V
Reverse leakage current	I_R	$V_{RWM} = 24V$			1	μA
Reverse breakdown voltage	V_{BR}	$I_{BR} = 1mA$	24.4			V
Clamping voltage ¹⁾	V_{CL}	$V_{ESD} = 8kV$		28		V
Clamping voltage ²⁾	V_{CL}	$I_{PP} = 170A, t_p = 8/20\mu s$			32	V
Junction capacitance	C_J	$V_R = 0V, f = 1MHz$		400	560	pF
		$V_R = 24V, f = 1MHz$		200	280	pF

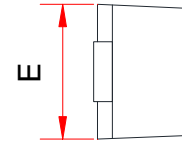
Notes:

- 1) Contact discharge mode, according to IEC61000-4-2.
- 2) Non-repetitive current pulse, according to IEC61000-4-5.

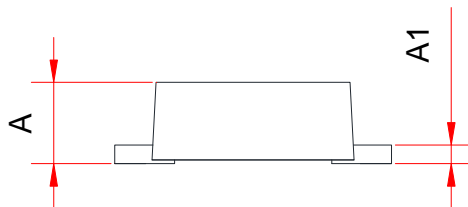
Typical characteristics ($T_A=25^\circ\text{C}$, unless otherwise noted)

8/20 μs waveform per IEC61000-4-5

Contact discharge current waveform per IEC61000-4-2

Clamping voltage vs. Peak pulse current

Capacitance vs. Reverse voltage

Non-repetitive peak pulse power vs. Pulse time

Power derating vs. Ambient temperature

PACKAGE OUTLINE DIMENSIONS
SOD-123FL


Bottom View

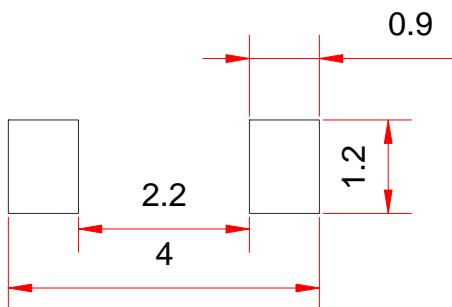


Side View

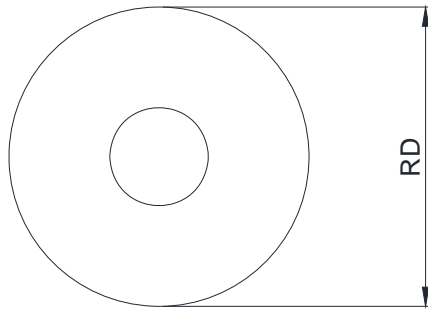
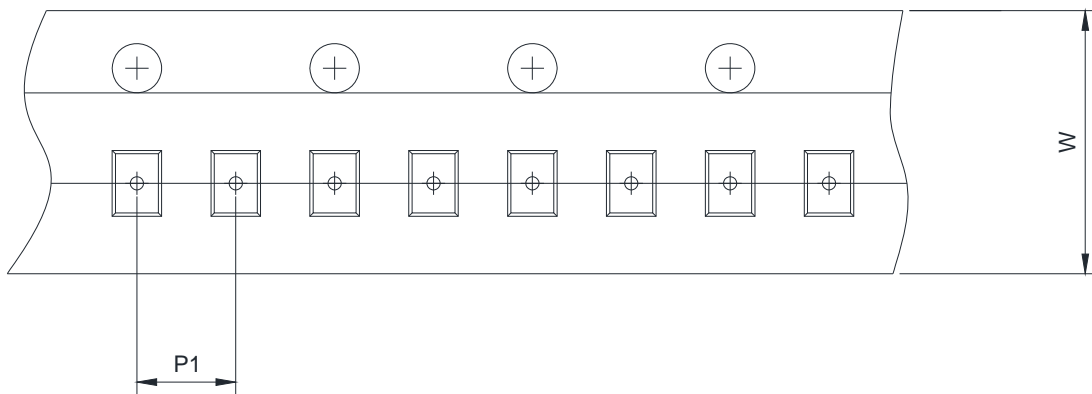
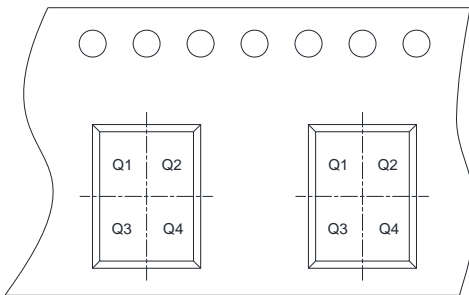


Side View

Symbol	Dimensions in Millimeters		
	Min.	Typ.	Max.
A	0.88	1.04	1.2
A1	0.1	0.15	0.2
D	2.5	2.7	2.9
D1	3.4	3.675	3.95
E	1.4	1.675	1.95
E1	0.5	0.8	1.1
L	0.7	0.8	0.9

Recommend land pattern (Unit: mm)

Notes:

This recommended land pattern is for reference purposes only. Please consult your manufacturing group to ensure your PCB design guidelines are met.

TAPE AND REEL INFORMATION
Reel Dimensions

Tape Dimensions

Quadrant Assignments For PIN1 Orientation In Tape



 User Direction of Feed

RD	Reel Dimension	<input checked="" type="checkbox"/> 7inch	<input type="checkbox"/> 13inch
W	Overall width of the carrier tape	<input checked="" type="checkbox"/> 8mm	<input type="checkbox"/> 12mm <input type="checkbox"/> 16mm
P1	Pitch between successive cavity centers	<input type="checkbox"/> 2mm	<input checked="" type="checkbox"/> 4mm <input type="checkbox"/> 8mm
Pin1	Pin1 Quadrant	<input checked="" type="checkbox"/> Q1	<input checked="" type="checkbox"/> Q2 <input type="checkbox"/> Q3 <input type="checkbox"/> Q4

X-ON Electronics

Largest Supplier of Electrical and Electronic Components

Click to view similar products for [ESD Suppressors / TVS Diodes](#) category:

Click to view products by [Will Semiconductor](#) manufacturer:

Other Similar products are found below :

[60KS200C](#) [D18V0L1B2LP-7B](#) [D5V0F4U5P5-7](#) [NTE4902](#) [P4KE27CA](#) [P6KE11CA](#) [P6KE8.2A](#) [SA60CA](#) [SA64CA](#) [SMBJ12CATR](#)
[SMBJ33CATR](#) [SMBJ6.5A](#) [SMBJ8.0A](#) [ESD101-B1-02ELS](#) [E6327](#) [ESD112-B1-02EL](#) [E6327](#) [ESD7451N2T5G](#) [19180-510](#) [CPDT-5V0USP-](#)
[HF](#) [3.0SMCJ33CA-F](#) [3.0SMCJ36A-F](#) [HSPC16701B02TP](#) [JANTX1N6126A](#) [D3V3Q1B2DLP3-7](#) [D55V0M1B2WS-7](#) [SCM1293A-04SO](#)
[ESD200-B1-CSP0201](#) [E6327](#) [SM12-7](#) [CEN955](#) [W/DATA](#) [VESD12A1A-HD1-GS08](#) [CPDQC5V0-HF](#) [D1213A-01LP4-7B](#) [ESD101-B1-02EL](#)
[E6327](#) [AOZ8808DI-03](#) [5KP15A](#) [5KP48A](#) [5KP90A](#) [ESD3V3D7-TP](#) [15KPA36A-LF](#) [P4KE56CA](#) [P4KE68A](#) [P4KE91CATR](#) [P6KE120A](#)
[P6KE13CA](#) [P6KE43CA](#) [P6KE6.8CA](#) [P6KE8.2](#) [P6SMBJ20CA](#) [JANTX1N6072A](#) [SR2835ESKG](#) [SA90CA](#)