

ESD73131CZ

1-Line, Bi-directional, Ultra-low Capacitance Transient Voltage Suppressor

Descriptions

The ESD73131CZ is an ultra-low capacitance TVS (Transient Voltage Suppressor) designed to protect high speed data interfaces. It has been specifically designed to protect sensitive electronic components which are connected to data and transmission lines from over-stress caused by ESD (Electrostatic Discharge).

The ESD73131CZ incorporates one pair of ultra-low capacitance diodes.

The ESD73131CZ may be used to provide ESD protection up to $\pm 25\text{kV}$ (contact discharge) according to IEC61000-4-2, and withstand peak pulse current up to 13A (8/20 μs) according to IEC61000-4-5.

The ESD73131CZ is available in DWN0603-2L package. Standard products are Pb-free and Halogen-free.

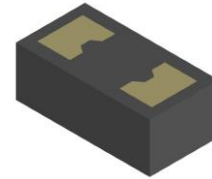
Features

- Stand-off voltage: $\pm 5.0\text{V}$ Max.
- Transient protection for each line according to IEC61000-4-2 (ESD): $\pm 25\text{kV}$ (contact discharge)
: $\pm 30\text{kV}$ (air discharge)
IEC61000-4-5 (surge): 13A (8/20 μs)
- Low capacitance: $C_J = 0.30\text{pF}$ typ.
- Low leakage current
- Low clamping voltage: $V_{CL} = 5.2\text{V}$ typ. @ $I_{PP} = 16\text{A}$ (TLP)
- Solid-state silicon technology

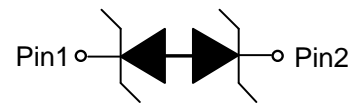
Applications

- Cellular handsets
- Tablets
- Laptops
- Other portable devices
- Network communication devices

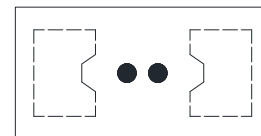
<http://www.sh-willsemi.com>



DWN0603-2L (Bottom View)



Pin configuration



•• = Device code

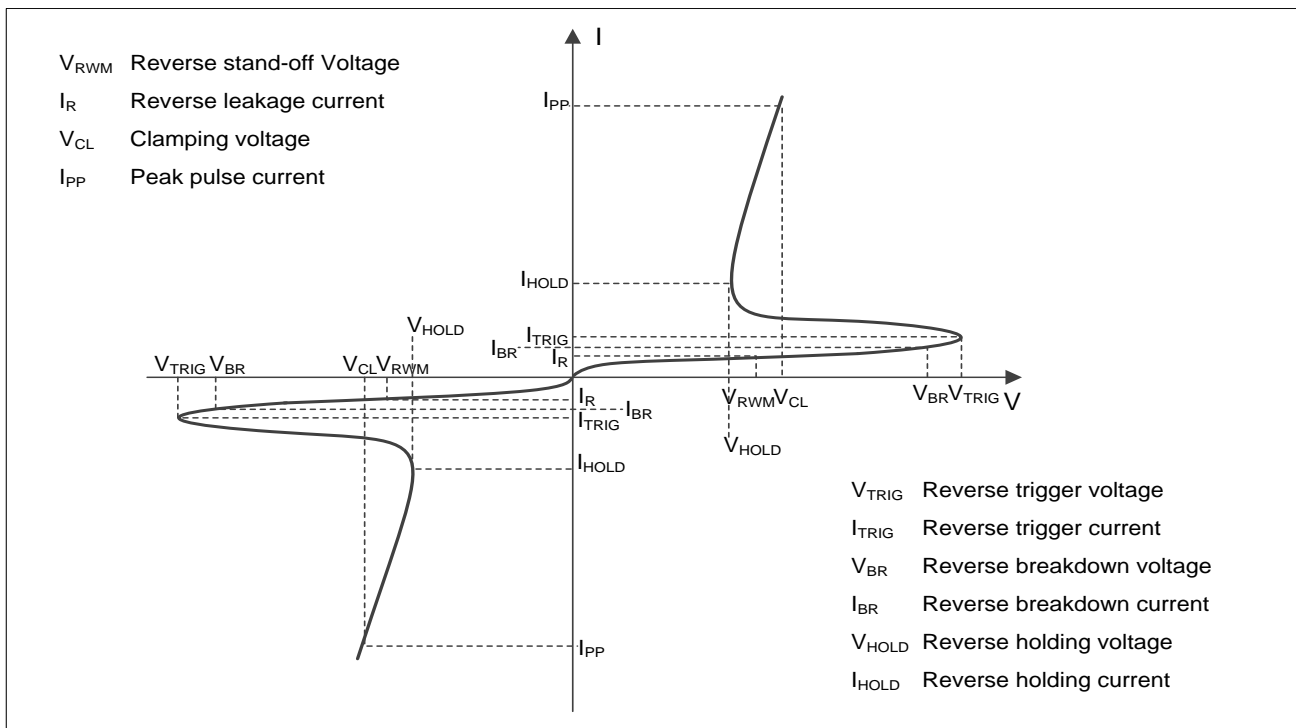
Marking (Top View)

Order information

Device	Package	Shipping
ESD73131CZ-2/TR	DWN0603-2L	10000/Tape&Reel

Absolute maximum ratings

Parameter	Symbol	Rating	Unit
Peak pulse power ($t_p = 8/20\mu s$)	P_{pk}	78	W
Peak pulse current ($t_p = 8/20\mu s$)	I_{PP}	13	A
ESD according to IEC61000-4-2 air discharge	V_{ESD}	± 30	kV
ESD according to IEC61000-4-2 contact discharge		± 25	
Junction temperature	T_J	125	$^{\circ}C$
Operating temperature	T_{OP}	-40~85	$^{\circ}C$
Lead temperature	T_L	260	$^{\circ}C$
Storage temperature	T_{STG}	-55~150	$^{\circ}C$

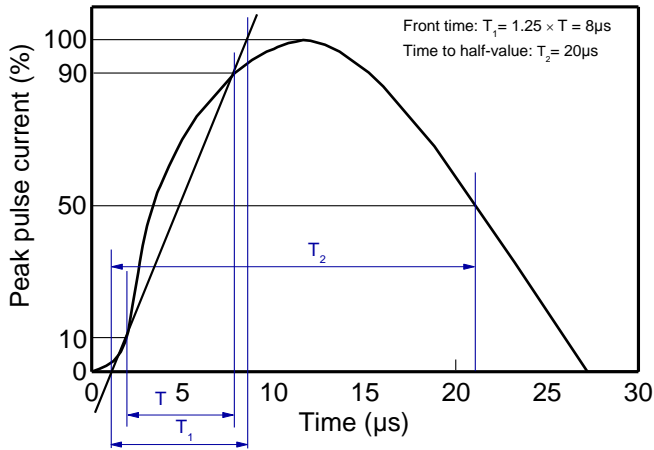
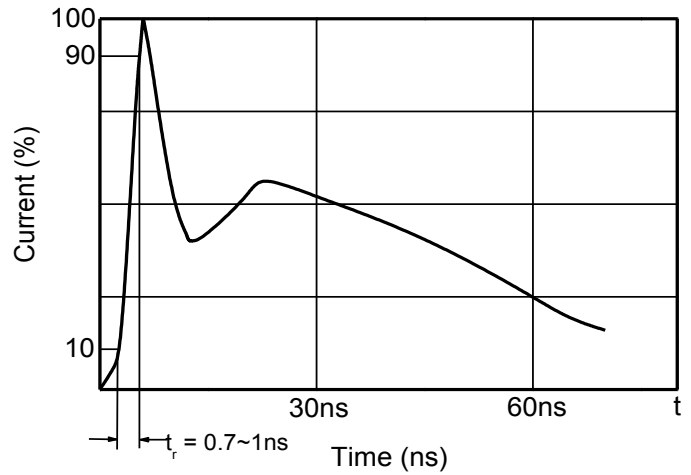
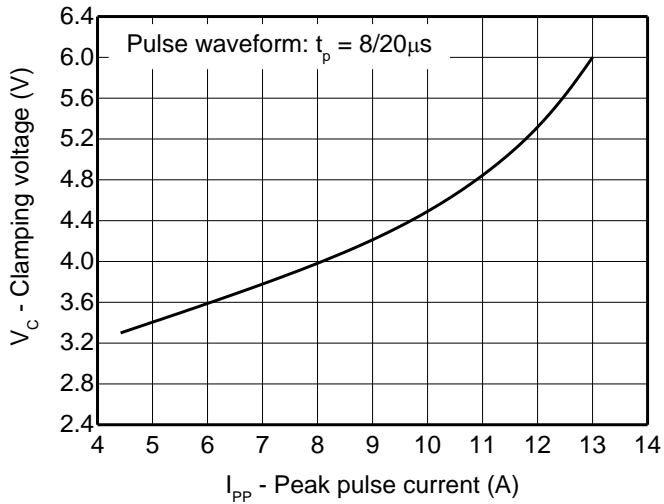
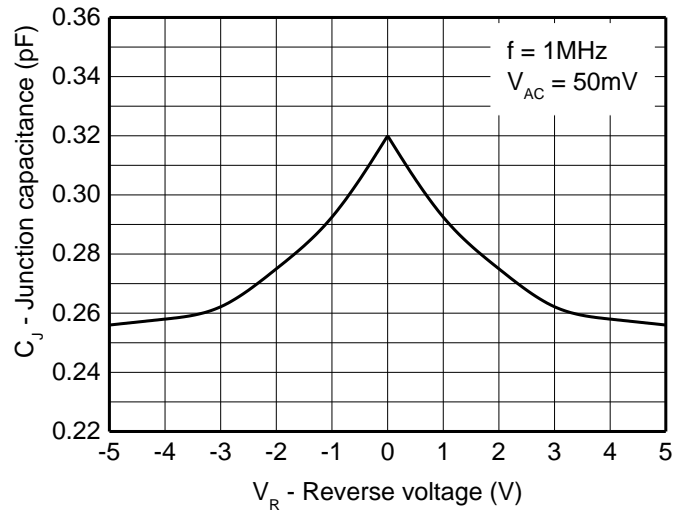
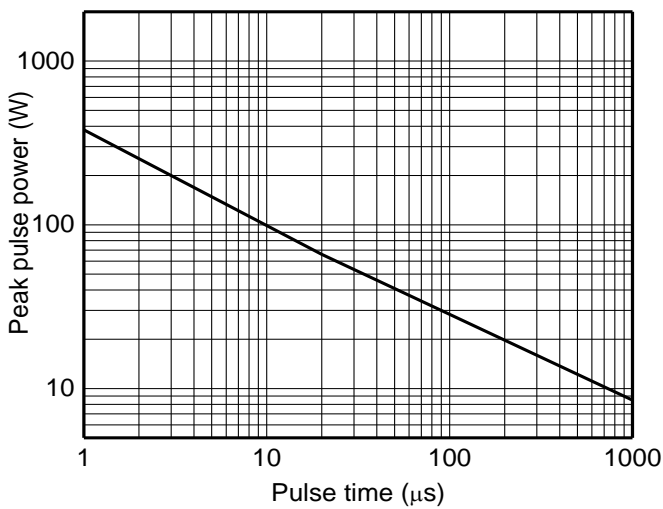
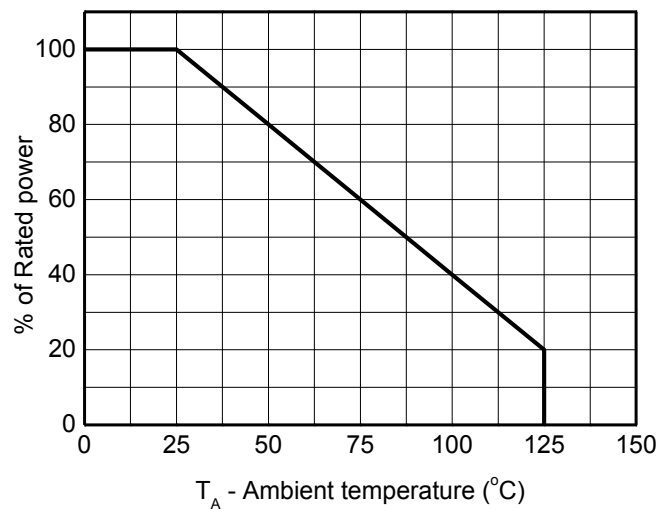
Electrical characteristics ($T_A=25^{\circ}C$, unless otherwise noted)

Definitions of electrical characteristics

Electrical characteristics ($T_A=25^\circ\text{C}$, unless otherwise noted)

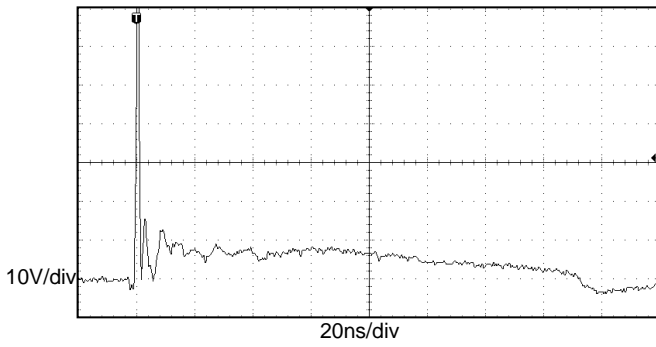
Parameter	Symbol	Condition	Min.	Typ.	Max.	Unit
Reverse maximum working voltage	V_{RWM}				± 5.0	V
Reverse leakage current	I_R	$V_{RWM} = 5.0\text{V}$			1.0	μA
Reverse breakdown voltage	V_{BR}	$I_T = 1\text{mA}$	9.5	10.7	12.5	V
Clamping voltage ¹⁾	V_{CL}	$I_{PP} = 16\text{A}$, $t_p = 100\text{ns}$		5.2		V
Dynamic resistance ¹⁾	R_{DYN}			0.15		Ω
Clamping voltage ²⁾	V_{CL}	$V_{ESD} = 8\text{kV}$		5.5		V
Clamping voltage ³⁾	V_{CL}	$I_{PP} = 1\text{A}$, $t_p = 8/20\mu\text{s}$		3.0	3.5	V
		$I_{PP} = 13\text{A}$, $t_p = 8/20\mu\text{s}$		6.0	6.5	V
Junction capacitance	C_J	$V_R = 1.5\text{V}$, $f = 1\text{MHz}$		0.30	0.45	pF

Notes:

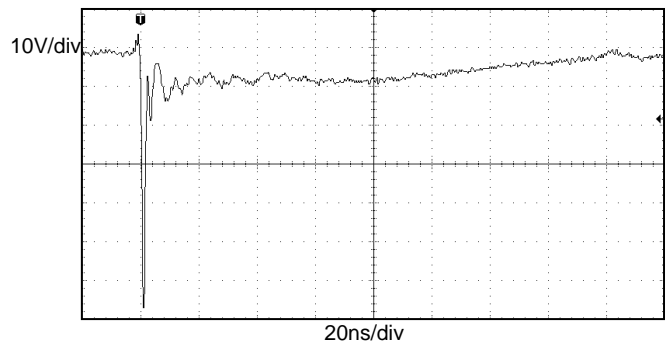
- 1) TLP parameter: $Z_0 = 50\Omega$, $t_p = 100\text{ns}$, $t_r = 2\text{ns}$, averaging window from 60ns to 80ns. R_{DYN} is calculated from 4A to 16A.
- 2) Contact discharge mode, according to IEC61000-4-2.
- 3) Non-repetitive current pulse, according to IEC61000-4-5.

Typical characteristics ($T_A=25^\circ\text{C}$, unless otherwise noted)

8/20 μs waveform per IEC61000-4-5

Contact discharge current waveform per IEC61000-4-2

Clamping voltage vs. Peak pulse current

Capacitance vs. Reverse voltage

Non-repetitive peak pulse power vs. Pulse time

Power derating vs. Ambient temperature

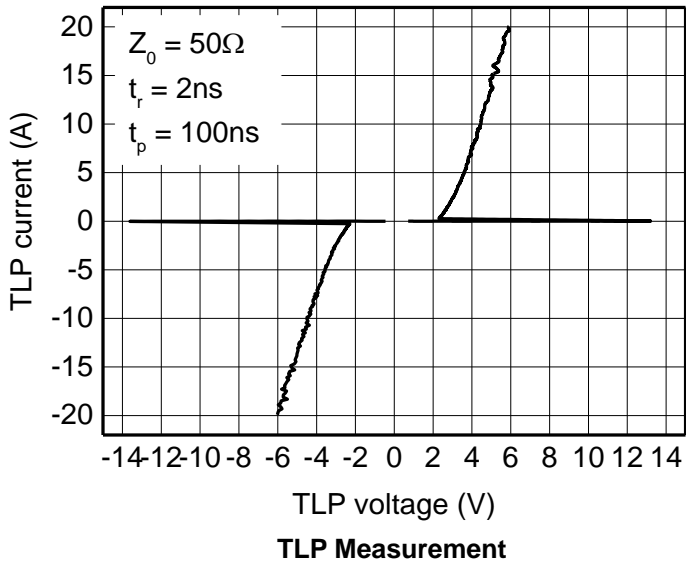
Typical characteristics ($T_A = 25^\circ\text{C}$, unless otherwise noted)

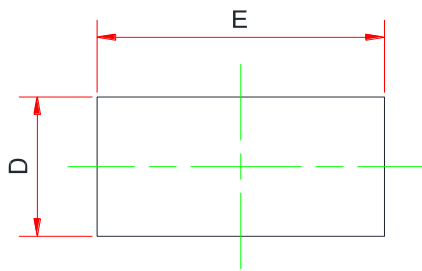
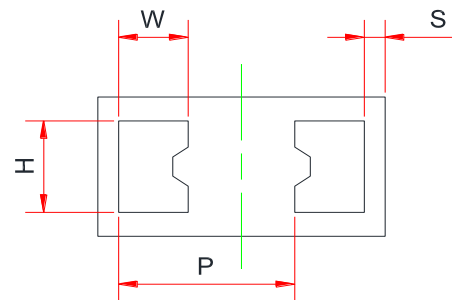
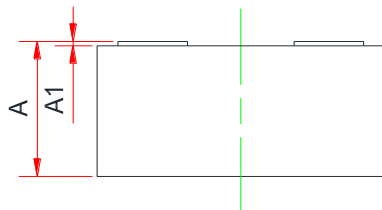


ESD clamping
 (+8kV contact discharge per IEC61000-4-2)

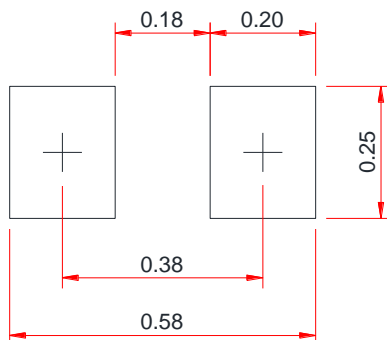


ESD clamping
 (-8kV contact discharge per IEC61000-4-2)

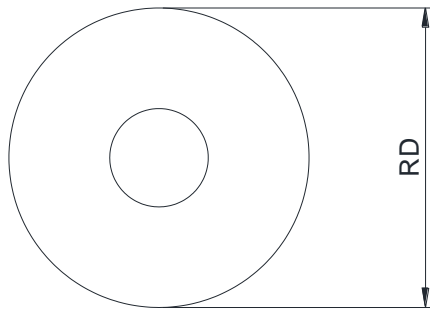
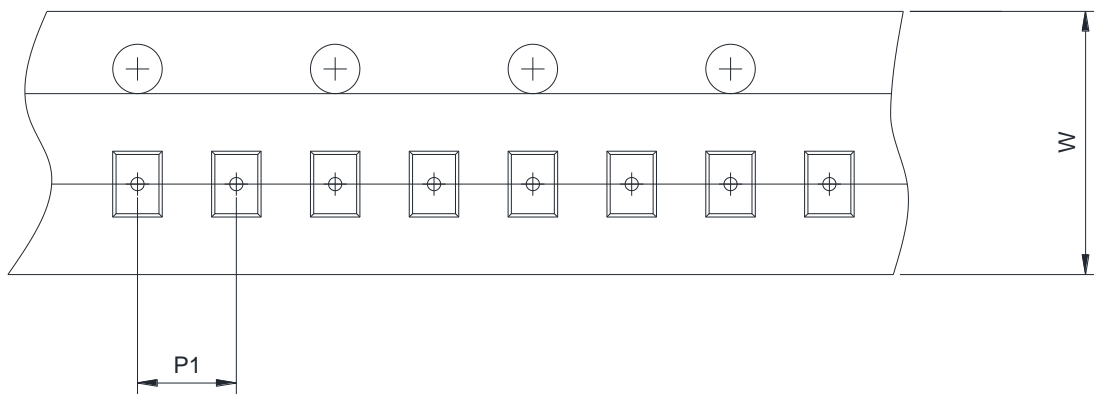


PACKAGE OUTLINE DIMENSIONS
DWN0603-2L

Top View

Bottom View

Side View

Symbol	Dimensions in Millimeters		
	Min.	Typ.	Max.
A	0.268	0.310	0.352
A1	0.000	-	0.005
D	0.290	0.320	0.350
E	0.590	0.620	0.650
W	0.150 Ref.		
H	0.210 Ref.		
S	0.045 Ref.		
P	0.380 Ref.		

Recommended land pattern (Unit: mm)

Notes:

This recommended land pattern is for reference purposes only. Please consult your manufacturing group to ensure your PCB design guidelines are met.

TAPE AND REEL INFORMATION
Reel Dimensions

Tape Dimensions


RD	Reel Dimension	<input checked="" type="checkbox"/> 7inch	<input type="checkbox"/> 13inch
W	Overall width of the carrier tape	<input checked="" type="checkbox"/> 8mm	<input type="checkbox"/> 12mm
P1	Pitch between successive cavity centers	<input checked="" type="checkbox"/> 2mm	<input type="checkbox"/> 4mm <input type="checkbox"/> 8mm

X-ON Electronics

Largest Supplier of Electrical and Electronic Components

Click to view similar products for [ESD Suppressors / TVS Diodes](#) category:

Click to view products by [Will Semiconductor](#) manufacturer:

Other Similar products are found below :

[60KS200C](#) [D18V0L1B2LP-7B](#) [D5V0F4U5P5-7](#) [NTE4902](#) [P4KE27CA](#) [P6KE11CA](#) [P6KE8.2A](#) [SA60CA](#) [SA64CA](#) [SMBJ12CATR](#)
[SMBJ33CATR](#) [SMBJ6.5A](#) [SMBJ8.0A](#) [ESD101-B1-02ELS](#) [E6327](#) [ESD112-B1-02EL](#) [E6327](#) [ESD7451N2T5G](#) [19180-510](#) [CPDT-5V0USP-](#)
[HF](#) [3.0SMCJ33CA-F](#) [3.0SMCJ36A-F](#) [HSPC16701B02TP](#) [JANTX1N6126A](#) [D3V3Q1B2DLP3-7](#) [D55V0M1B2WS-7](#) [SCM1293A-04SO](#)
[ESD200-B1-CSP0201](#) [E6327](#) [SM12-7](#) [CEN955](#) [W/DATA](#) [VESD12A1A-HD1-GS08](#) [CPDQC5V0-HF](#) [D1213A-01LP4-7B](#) [ESD101-B1-02EL](#)
[E6327](#) [AOZ8808DI-03](#) [5KP15A](#) [5KP48A](#) [5KP90A](#) [ESD3V3D7-TP](#) [15KPA36A-LF](#) [P4KE56CA](#) [P4KE68A](#) [P4KE91CATR](#) [P6KE120A](#)
[P6KE13CA](#) [P6KE43CA](#) [P6KE6.8CA](#) [P6KE8.2](#) [P6SMBJ20CA](#) [JANTX1N6072A](#) [SR2835ESKG](#) [SA90CA](#)