

**RB520S30**
**Schottky Barrier Diode**
[Http://www.sh-willsemi.com](http://www.sh-willsemi.com)
**Features**

- Small surface mounting type
- High reliability
- Low leakage current
- These are Pb-Free Devices


**SOD-523**

**Circuit**
**Applications**

- Low Current rectification


**Marking**
**Absolute maximum ratings**

Parameter	Symbol	Value	Unit
Reverse voltage (DC)	$V_R$	30	V
Average rectified forward current	$I_O$	200	mA
Peak forward surge current	$I_{FSM}$	1	A
Junction temperature	$T_J$	125	°C
Storage temperature	Tstg	-40 ~ 125	°C

**Electronics characteristics ( $T_A=25^\circ\text{C}$ )**

Parameter	Symbol	Condition	Min.	Typ.	Max.	Unit
Reverse Voltage	$V_R$	$I_R=100\mu\text{A}$	30			
Forward Voltage	$V_F$	$I_F=200\text{mA}$			0.6	V
Reverse current	$I_R$	$V_R=10\text{V}$			1	$\mu\text{A}$

**Order Informations**

Device	Package	Marking	Shipping
RB520S30-2/TR	SOD-523	B	3000/Reel&Tape

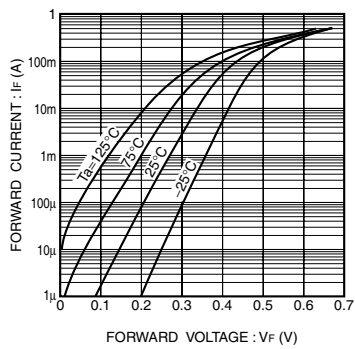
**Typical characteristics (Ta=25°C, unless otherwise noted)**


Fig. 1 Forward characteristics

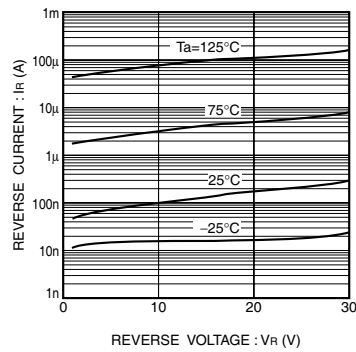


Fig. 2 Reverse characteristics

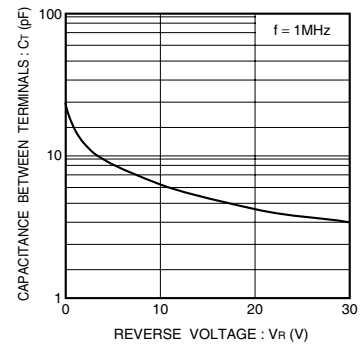
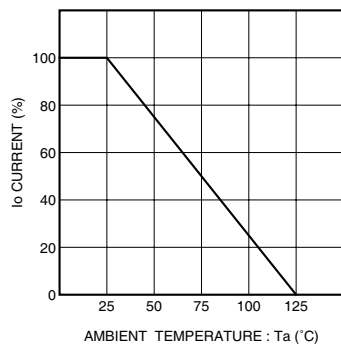
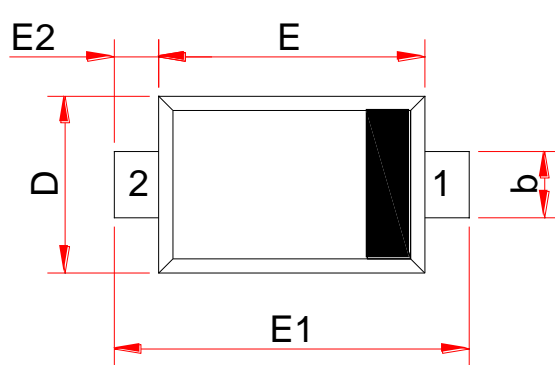
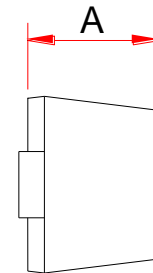
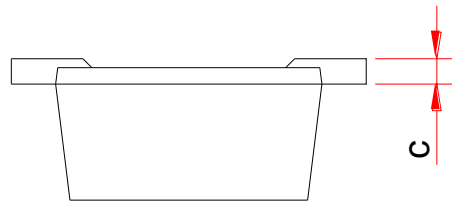


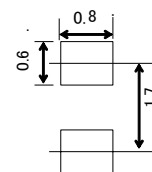
Fig. 3 Capacitance between terminals characteristics

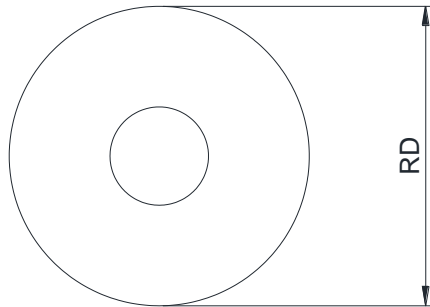
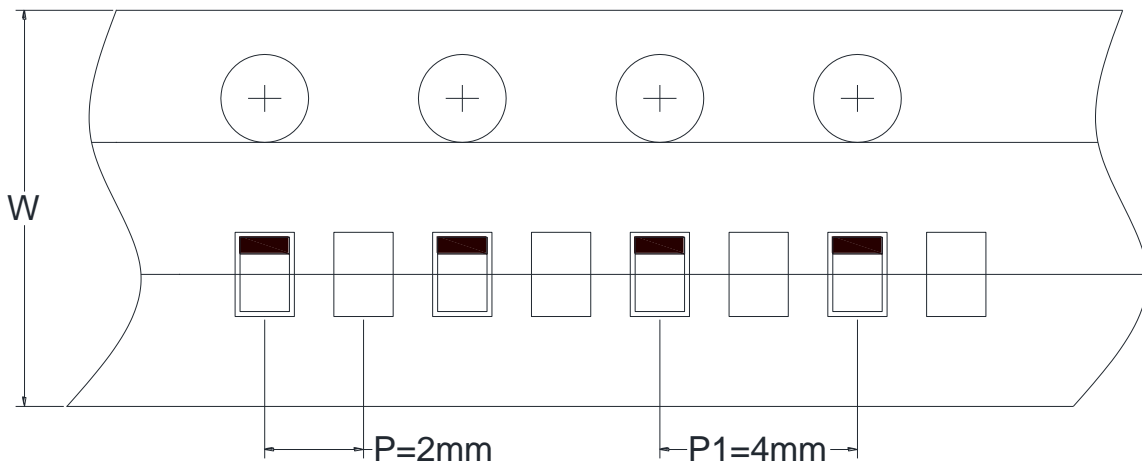
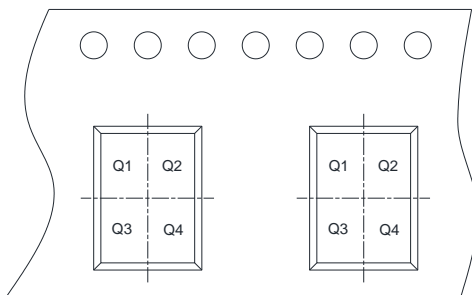

 Fig 4. Derating curve  
(mounting on glass epoxy PCBs)

**PACKAGE OUTLINE DIMENSIONS**
**SOD-523**

**TOP VIEW**

**SIDE VIEW**

**SIDE VIEW**

Symbol	Dimensions in Millimeters		
	Min.	Typ.	Max.
A	0.50	-	0.70
b	0.25	-	0.35
c	0.07	-	0.20
D	0.70	-	0.90
E	1.10	-	1.30
E1	1.50	-	1.70
E2	0.15	-	0.25

●Land size figure (Unit : mm)



**TAPE AND REEL INFORMATION**
**Reel Dimensions**

**Tape Dimensions**

**Quadrant Assignments For PIN1 Orientation In Tape**


  
 User Direction of Feed

RD	Reel Dimension	<input checked="" type="checkbox"/> 7inch	<input type="checkbox"/> 13inch
W	Overall width of the carrier tape	<input checked="" type="checkbox"/> 8mm	<input type="checkbox"/> 12mm <input type="checkbox"/> 16mm
P1	Pitch between successive cavity centers	<input type="checkbox"/> 2mm	<input checked="" type="checkbox"/> 4mm <input type="checkbox"/> 8mm
Pin1	Pin1 Quadrant	<input checked="" type="checkbox"/> Q1	<input checked="" type="checkbox"/> Q2 <input type="checkbox"/> Q3 <input type="checkbox"/> Q4

## X-ON Electronics

Largest Supplier of Electrical and Electronic Components

*Click to view similar products for [Schottky Diodes & Rectifiers](#) category:*

*Click to view products by [Will Semiconductor](#) manufacturer:*

Other Similar products are found below :

[CUS06\(TE85L,Q,M\)](#) [MA4E2039](#) [D1FH3-5063](#) [MBR0530L-TP](#) [MBR10100CT-BP](#) [MBR30H100MFST1G](#) [MMBD301M3T5G](#) [PMAD1103-LF](#) [PMAD1108-LF](#) [RB160M-50TR](#) [RB520S-30](#) [RB551V-30](#) [DD350N18K](#) [DZ435N40K](#) [DZ600N16K](#) [BAS16E6433HTMA1](#) [BAS 3010S-02LRH E6327](#) [BAT 54-02LRH E6327](#) [IDL02G65C5XUMA1](#) [NSR05F40QNXT5G](#) [NSVR05F40NXT5G](#) [JANS1N6640](#) [SB07-03C-TB-H](#) [SB1003M3-TL-W](#) [SBAT54CWT1G](#) [SBM30-03-TR-E](#) [SBS818-TL-E](#) [SK32A-LTP](#) [SK33A-TP](#) [SK34A-TP](#) [SK34B-TP](#) [SMD1200PL-TP](#) [ACDBN160-HF](#) [SS3003CH-TL-E](#) [STPS30S45CW](#) [PDS3100Q-7](#) [GA01SHT18](#) [CRS10I30A\(TE85L,QM\)](#) [MBR1240MFST1G](#) [MBRB30H30CT-1G](#) [BAS28E6433HTMA1](#) [BAS 70-02L E6327](#) [HSB123JTR-E](#) [JANTX1N5712-1](#) [VS-STPS40L45CW-N3](#) [DD350N12K](#) [SB007-03C-TB-E](#) [SB10015M-TL-E](#) [SB1003M3-TL-E](#) [SK110-LTP](#)