

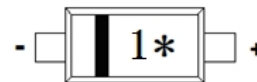
RB521C30
Schottky Barrier Diode
<http://www.willsemi.com>
Features

- 100mA Average rectified forward current
- Low forward voltage
- Low leakage current
- Small package SOD-923


SOD-923

Circuit
Applications

- Low Current rectification


Marking
Absolute maximum ratings

Parameter	Symbol	Value	Unit
Reverse voltage (repetitive peak)	V_{RM}	30	V
Reverse voltage (DC)	V_R	30	V
Average rectified forward current	I_O	100	mA
Peak forward surge current (8.3ms single sine pluse)	I_{FSM}	0.5	A
Junction temperature	T_J	150	°C
Operating temperature	T_{opr}	-40 ~ 125	°C
Storage temperature	T_{stg}	-40 ~ 150	°C

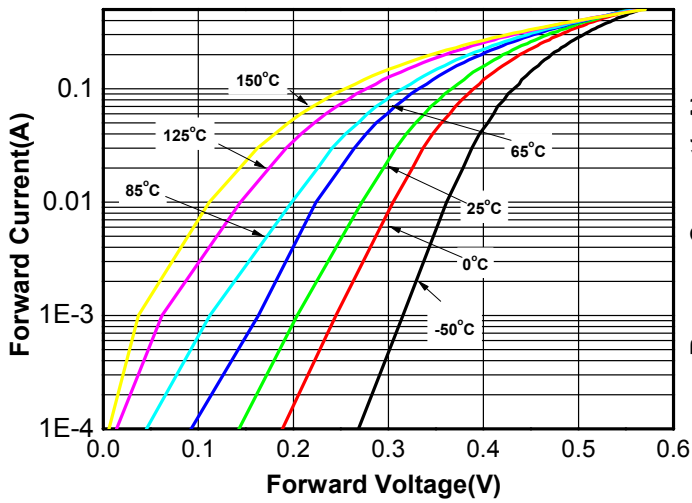
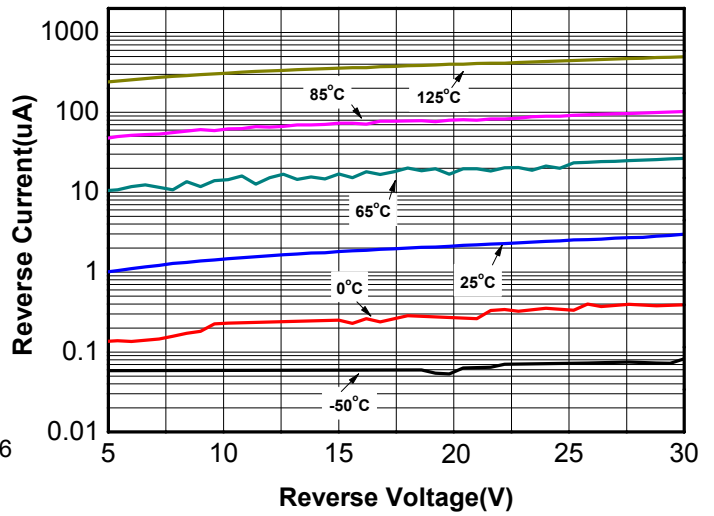
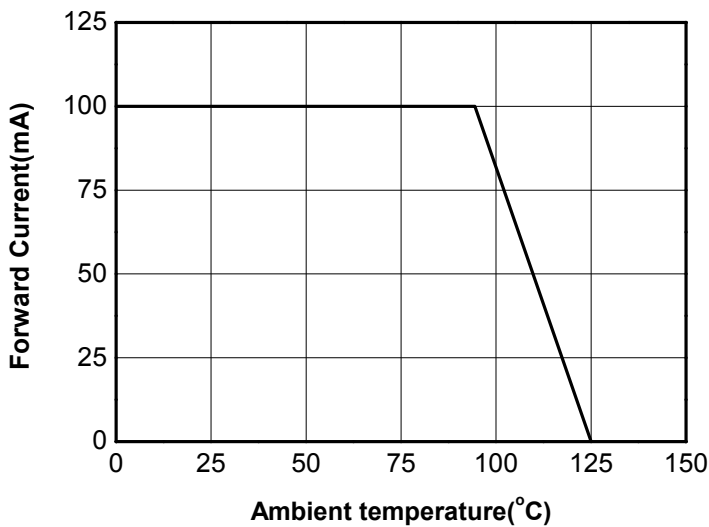
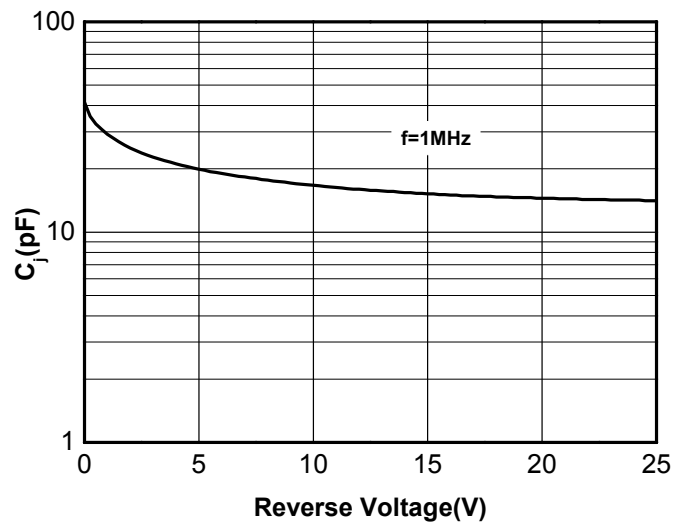
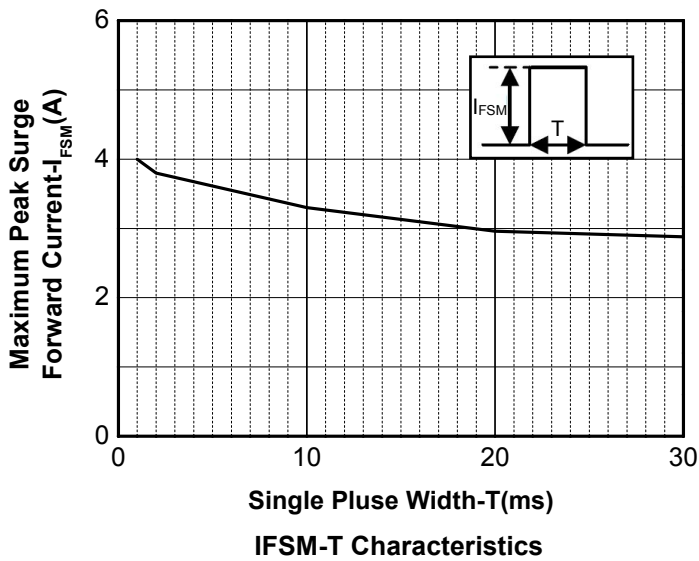
Electronics characteristics ($T_A=25^\circ\text{C}$)

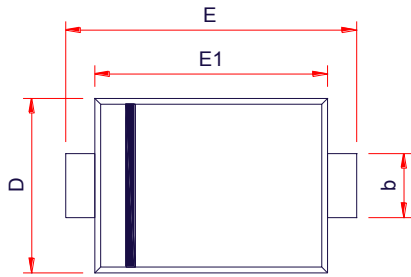
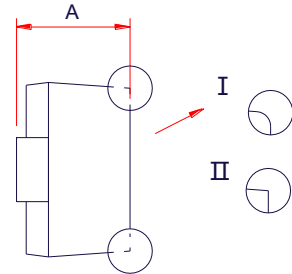
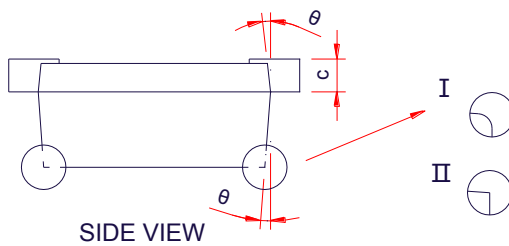
Parameter	Symbol	Condition	Min.	Typ.	Max.	Unit
Reverse Voltage	V_R	$I_R=100\mu\text{A}$	30			
Forward Voltage	V_F	$I_F=10\text{mA}$			0.35	V
		$I_F=100\text{mA}$			0.47	V
Reverse current	I_R	$V_R=10\text{V}$			6	μA
		$V_R=30\text{V}$			15	μA
Junction capacitance	C_J	$V_R=5\text{V}, F=1\text{MHz}$		21		pF
Thermal Resistance	$R_{\theta(JA)}$	Junction to Ambient		650		K/W

Order Informations

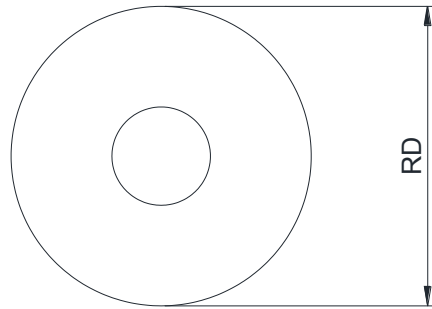
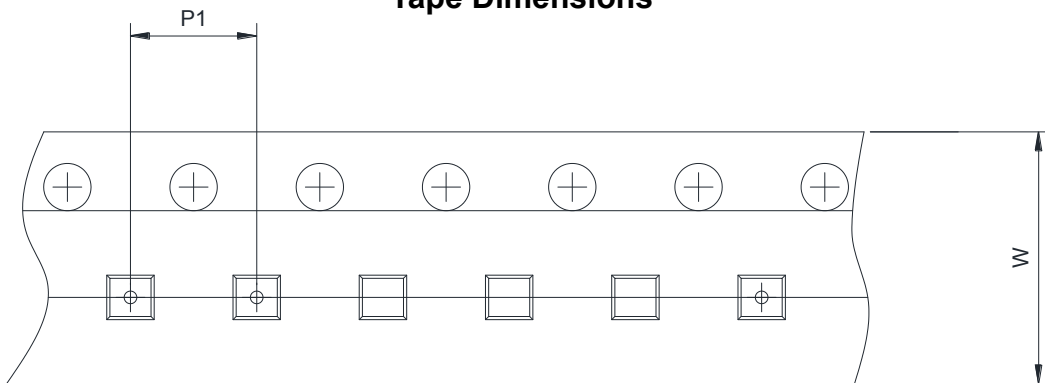
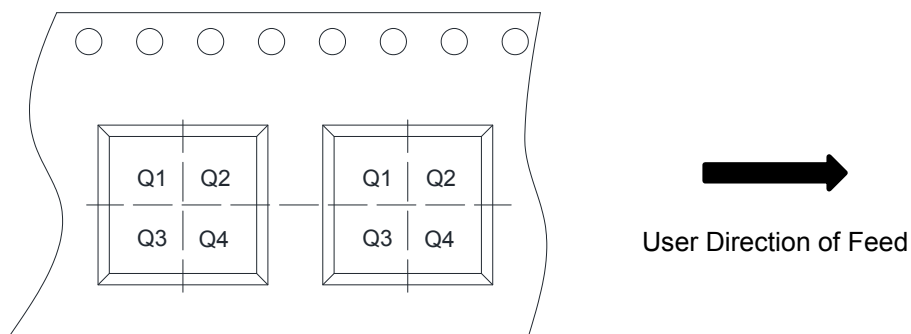
Device	Package	Marking	Shipping
RB521C30-2/TR	SOD-923	1* ⁽¹⁾	10000/Reel&Tape

Note 1: * = Month code(A~Z); 1 = Device code;

Typical characteristics (Ta=25°C, unless otherwise noted)

Forward voltage vs. Forward current

Reverse current vs. Reverse voltage

Forward current derating curve

Junction capacitance vs. Reverse voltage

Single Pulse Width-T(ms)
IFSM-T Characteristics

PACKAGE OUTLINE DIMENSIONS
SOD-923

TOP VIEW

SIDE VIEW

SIDE VIEW

Symbol	Dimensions in Millimeters		
	Min.	Typ.	Max.
A	0.35	0.40	0.45
D	0.55	0.60	0.65
E	0.90	1.00	1.10
E1	0.70	0.80	0.90
b	0.15	-	0.30
c	-	-	0.20
θ	7° Ref		

TAPE AND REEL INFORMATION
Reel Dimensions

Tape Dimensions

Quadrant Assignments For PIN1 Orientation In Tape


RD	Reel Dimension	<input checked="" type="checkbox"/> 7inch	<input type="checkbox"/> 13inch
W	Overall width of the carrier tape	<input checked="" type="checkbox"/> 8mm	<input type="checkbox"/> 12mm <input type="checkbox"/> 16mm
P1	Pitch between successive cavity centers	<input checked="" type="checkbox"/> 2mm	<input type="checkbox"/> 4mm <input type="checkbox"/> 8mm
Pin1	Pin1 Quadrant	<input checked="" type="checkbox"/> Q1	<input checked="" type="checkbox"/> Q2 <input type="checkbox"/> Q3 <input type="checkbox"/> Q4

X-ON Electronics

Largest Supplier of Electrical and Electronic Components

Click to view similar products for [Schottky Diodes & Rectifiers](#) category:

Click to view products by [Will Semiconductor](#) manufacturer:

Other Similar products are found below :

[CUS06\(Te85L,Q,M\)](#) [MA4E2039](#) [D1FH3-5063](#) [MBR0530L-TP](#) [MBR10100CT-BP](#) [MBR30H100MFST1G](#) [MMBD301M3T5G](#) [PMAD1103-LF](#) [PMAD1108-LF](#) [RB160M-50TR](#) [RB520S-30](#) [RB551V-30](#) [DD350N18K](#) [DZ435N40K](#) [DZ600N16K](#) [BAS16E6433HTMA1](#) [BAS 3010S-02LRH E6327](#) [BAT 54-02LRH E6327](#) [IDL02G65C5XUMA1](#) [NSR05F40QNXT5G](#) [NSVR05F40NXT5G](#) [JANS1N6640](#) [SB07-03C-TB-H](#) [SB1003M3-TL-W](#) [SBAT54CWT1G](#) [SBM30-03-TR-E](#) [SBS818-TL-E](#) [SK32A-LTP](#) [SK33A-TP](#) [SK34A-TP](#) [SK34B-TP](#) [SMD1200PL-TP](#) [ACDBN160-HF](#) [SS3003CH-TL-E](#) [STPS30S45CW](#) [PDS3100Q-7](#) [GA01SHT18](#) [CRS10I30A\(Te85L,QM\)](#) [MBR1240MFST1G](#) [MBRB30H30CT-1G](#) [BAS28E6433HTMA1](#) [BAS 70-02L E6327](#) [HSB123JTR-E](#) [JANTX1N5712-1](#) [VS-STPS40L45CW-N3](#) [DD350N12K](#) [SB007-03C-TB-E](#) [SB10015M-TL-E](#) [SB1003M3-TL-E](#) [SK110-LTP](#)