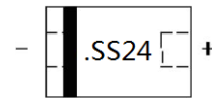


SS24
2A, Schottky Barrier Diode
[Http://:www.sh-willsemi.com](http://www.sh-willsemi.com)
Features

- Schottky barrier rectifier
- Guarding protection
- Low forward voltage
- Reverse energy tested
- High current capability
- Extremely low thermal resistance
- Standard products are Pb-free and Halogen-free


SMA(DO-214AC)


.SS24= Device code
Pin configuration and Marking

MECHANICAL DATA

- Case: SMA molded plastic body
- Polarity: Color band denotes cathode end
- Mounting position: ANY

Order information

Device	Package	Shipping
SS24	SMA (DO-214AC)	5000/Tape&Reel

Absolute maximum ratings

Parameter	Symbol	Value	Unit
Maximum Repetitive Peak Reverse Voltage	V_{RRM}	40	V
Maximum RMS voltage	V_{RWS}	28	V
Maximum DC blocking voltage	V_{DC}	40	V
Maximum average forward rectified current at T_L (Fig.2)	$I_{F(AV)}$	2.0	A
Peak forward surge current 8.3ms single half-sine-wave	I_{FSM}	40	A
Operating temperature range	T_J	-55 ~ 125	°C
Storage temperature range	T_{STG}	-55 ~ 150	°C

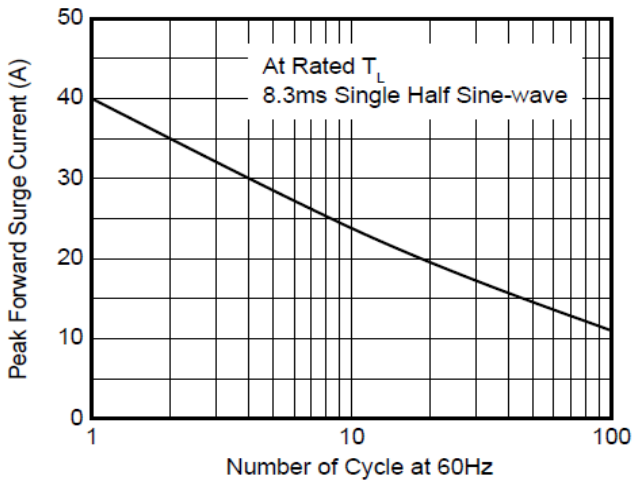
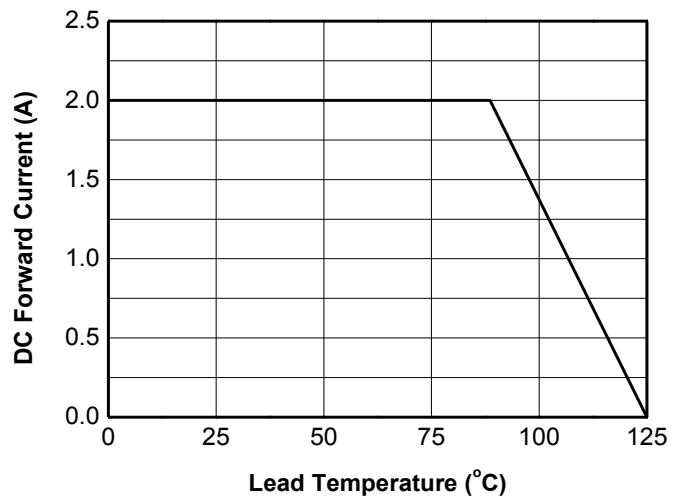
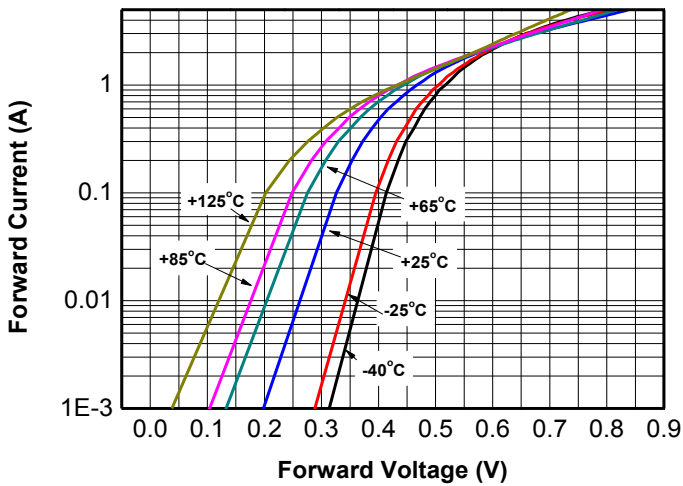
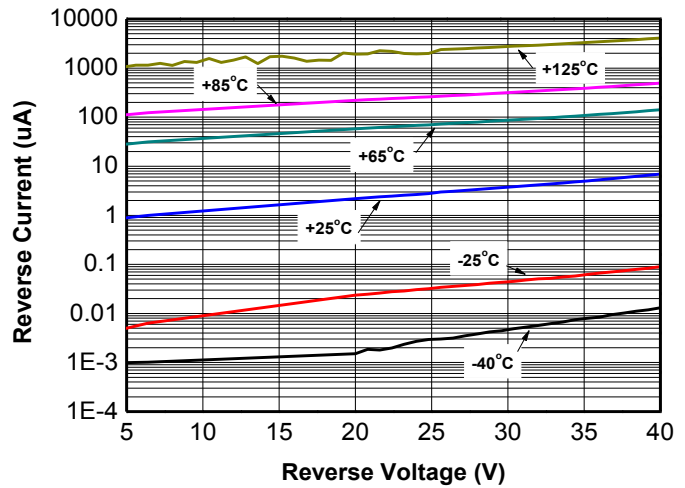
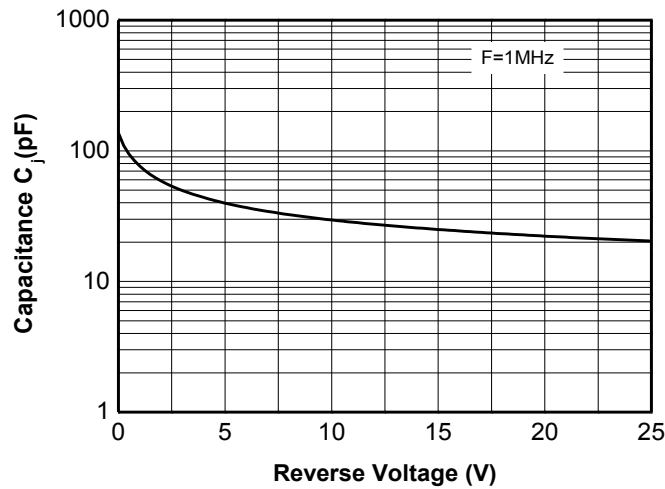
Thermal Characteristics

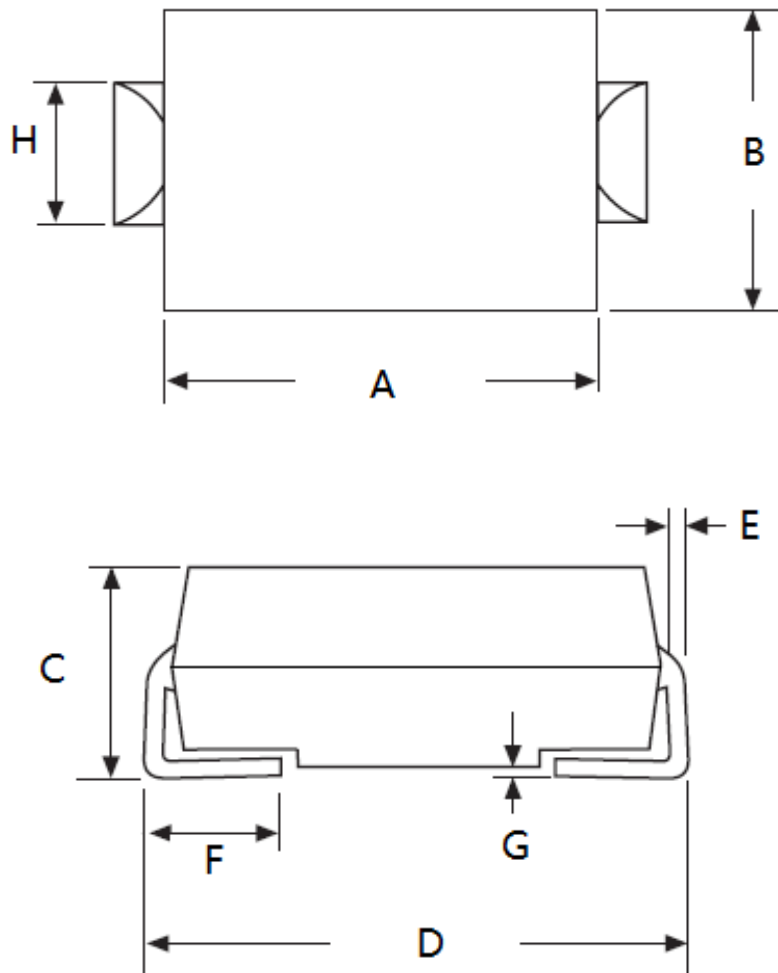
Parameter	Symbol	Value	Unit
Maximum thermal resistance (Junction to Lead)(Fig.2)	$R_{\theta JL}$	28	°C/W

Electronics characteristics ($T_A=25^\circ\text{C}$)

Parameter	Symbol	Value	Unit
Maximum instantaneous forward voltage @ $I_F=2.0\text{A}^*$	V_F	0.66	V
Maximum reverse current @ V_{DC} ($T_J=25^\circ\text{C}$)	I_R	0.2	mA
Maximum reverse current @ V_{DC} ($T_J=100^\circ\text{C}$)	I_R	6	mA

*: Pulse test, Pulse width 380us, duty cycle 1%

Typical characteristics (Ta=25°C, unless otherwise noted)

Fig.1: Peak Forward Surge Current

Fig.2: Forward current Derating Curve

Fig.3: Typical Forward Characteristics

Fig.4: Typical Reverse Characteristics

Fig.5: Junction capacitance vs. Reverse voltage

Package outline dimensions
SMA (DO-214AC)


Symbol	Dimensions in millimeter	
	Min.	Max.
A	3.90	4.40
B	2.45	2.75
C	1.90	2.40
D	4.85	5.25
E	0.152	0.305
F	0.76	1.52
G	0.203 Max.	
H	1.45	1.95

X-ON Electronics

Largest Supplier of Electrical and Electronic Components

Click to view similar products for [Schottky Diodes & Rectifiers](#) category:

Click to view products by [Will Semiconductor](#) manufacturer:

Other Similar products are found below :

[MA4E2039](#) [MA4E2508M-1112](#) [MBR10100CT-BP](#) [MBR1545CT](#) [MMBD301M3T5G](#) [GS1JE-TP](#) [RB160M-50TR](#) [BAS 3010S-02LRH E6327](#)
[BAT 54-02LRH E6327](#) [NSR05F40QNXT5G](#) [NSVR05F40NXT5G](#) [NTE555](#) [JANS1N6640](#) [SB07-03C-TB-H](#) [SBAT54CWT1G](#) [SK310-T](#)
[SK33A-TP](#) [SK34B-TP](#) [SS3003CH-TL-E](#) [PDS3100Q-7](#) [GA01SHT18](#) [CRS10I30A\(TE85L,QM](#) [MA4E2501L-1290](#) [MBRB30H30CT-1G](#)
[BAS 70-02L E6327](#) [DMJ3940-000](#) [SB007-03C-TB-E](#) [SK32A-TP](#) [SK33B-TP](#) [SK35A-TP](#) [SK38B-LTP](#) [SK38B-TP](#) [NTE505](#)
[NTSB30U100CT-1G](#) [VS-6CWQ10FNHM3](#) [CRG04\(T5L,TEMQ\)](#) [ACDBA1100LR-HF](#) [ACDBA1200-HF](#) [ACDBA140-HF](#) [ACDBA2100-HF](#)
[ACDBA240-HF](#) [ACDBA3100-HF](#) [CDBQC0530L-HF](#) [BAT54-13-F](#) [ACDBA340-HF](#) [ACDBA260LR-HF](#) [ACDBA1100-HF](#) [MA4E2502L-](#)
[1246](#) [10BQ060-M3/5BT](#) [10BQ040-M3/5BT](#)