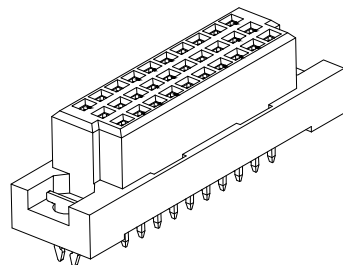
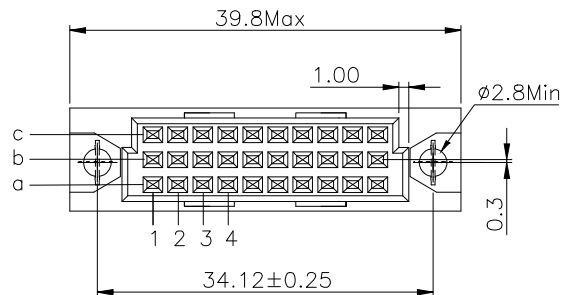


| | | | |
|------|---------------|-----------|-------|
| REV. | SPECIFICATION | ECN NO. | APPD. |
| R5 | | BCN2203/0 | |



Material and Plating:

Housing: PBT, UL94V-0, Beige.

Contacts: Copper Alloy

Lock: Phosphor Bronze.

Gold Plated on Contact Area and 80u" Min Tin Plated or Gold Flash on Solder Tail or Press Fit over Nickel 50u" Min.

Electrical Characteristics:

Current Rating: 2 AMP.

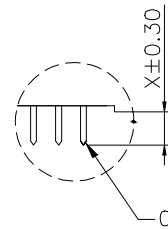
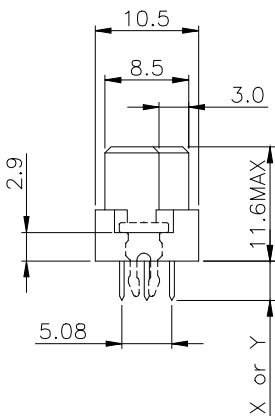
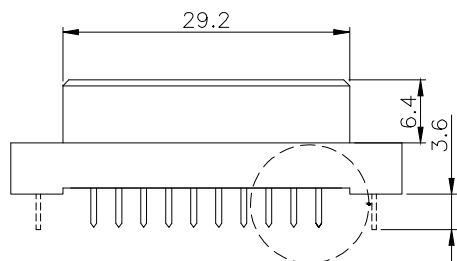
Dielectric Withstanding Voltage: AC 1000V For 1 minute.

Insulator Resistance: 10⁶ MΩ min. at DC 500V.

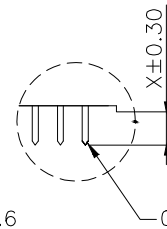
Contact Resistance: 20mΩ max. at DC 100mA.

Operating Temperature: -55°C~+125°C.

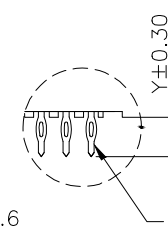
***RoHS Compliant**



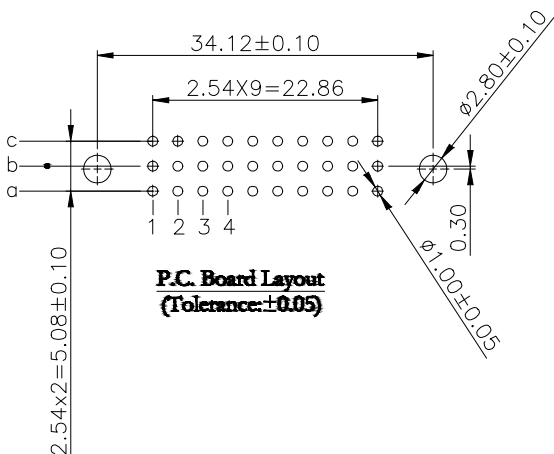
Dip 1,2



Dip:W1,W2



Press Fit Type



**P.C. Board Layout
(Tolerance: ±0.05)**

9001- 1 6 xx x C xx x x A

Series: 9001- 1 6 xx x C xx x x A

1: 2.54mm

6: Female

Position: 1: Dip Length, 2: Dip Length, W1: Dip Length, W2: Dip Length

A: Tray Package

Blank: W/O Lock

Blank: Dip

P: Press Fit

00: G/F

10: 10 u"

15: 15 u"

30: 30 u"

C: Selective Gold Plated

G: Gold Plated

| Length | 1 | 2 | W1 | W2 |
|--------|-----|-----|----|----|
| X | 4.0 | 2.5 | 13 | 17 |
| Y | 4.6 | 6.3 | 13 | 17 |

| Pitch | Pin No. | Rows With Contacts | Contact Arrange |
|--------|---------|--------------------|-----------------|
| 2.54mm | 30 | a b c | |
| | 20 | a - c | |
| | 10 | a - - | |

| | | | | | |
|-------------|------------|------------|-------|---------------|--|
| Tolerances | Dwg. No. | 9001D16025 | | Title: | |
| x = ±0.5 | Projection | | | 9001 Series | |
| .x = ±0.25 | Unit | mm | Scale | DIN41612 Half | |
| .xx = ±0.15 | Drawn By | ZY 3/23'22 | 1:1 | C Type Female | |

| | | | |
|-----------------------------|-----|---------|----|
| WingTAT [®] | | | |
| 深圳市格林柏电子技术开发有限公司 | | | |
| P/N: 9001-16xxx CxxxxA | | | |
| SHEET | 1/1 | Ver.No. | R5 |

X-ON Electronics

Largest Supplier of Electrical and Electronic Components

Click to view similar products for [Board to Board & Mezzanine Connectors](#) category:

Click to view products by [WingTAT](#) manufacturer:

Other Similar products are found below :

[589158040000018](#) [MDF7C-18P-2.54DSA\(55\)](#) [FCN-268F036-G/BD](#) [FCN-268M012-G/0D](#) [FCN-268M024-G/1D](#) [MIS-048-01-F-D-DP-K](#)
[832-10-034-10-001000](#) [FX4C-80S-1.27DSA](#) [93696-330](#) [224393](#) [FCN-235D050-G/C](#) [210-93-314-41-105000](#) [MDF7-40DP-2.54DSA\(55\)](#)
[55323-1519](#) [069159702701000](#) [101A10019X](#) [105061100000861+](#) [75140-7012](#) [87471-650](#) [1744382-4](#) [063209](#) [10124054-515LF](#) [68685-603](#)
[8-1616154-3](#) [541371078](#) [IL-WX-10PB-HF-B-E1000E](#) [FX23-40P-0.5SV15B](#) [FCN-214J100-G/0](#) [354184](#) [P50-028-DDS-TG](#) [53309-2471](#)
[54546-2071](#) [1586617-1](#) [504248-1210](#) [504248-2010](#) [1-1437355-2](#) [9159005551906](#) [NDS100-004-BF](#) [93696-730LF](#) [91922-31141LF](#) [505274-](#)
[3440](#) [501493-2410](#) [504208-3410](#) [505006-0811](#) [505274-2040](#) [202436-1600](#) [202477-0414](#) [71660-7580](#) [73420-5192](#) [360-10-107-00-001000](#)