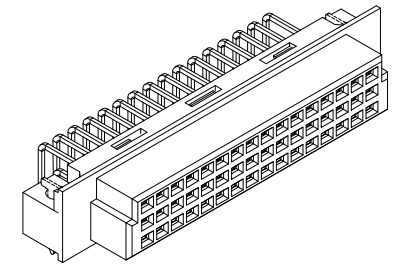
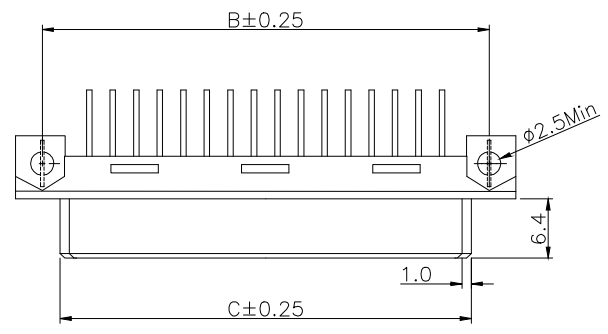


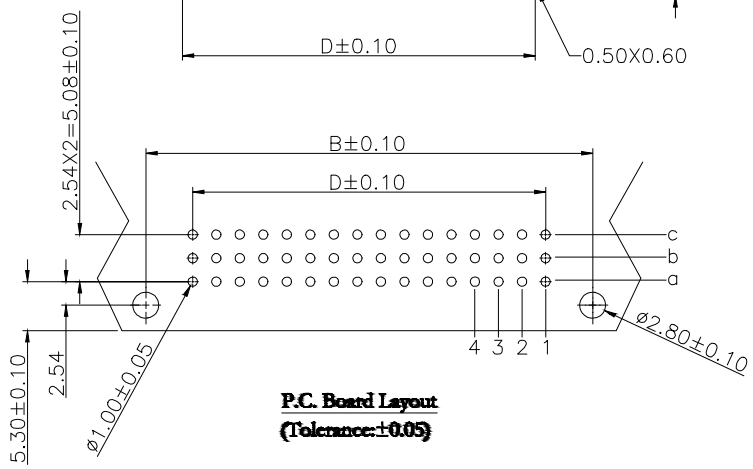
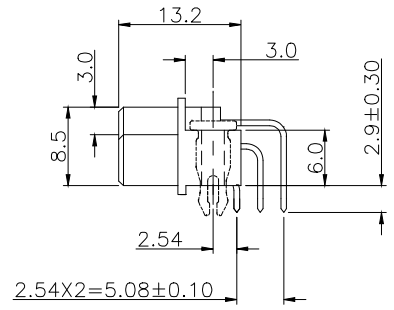
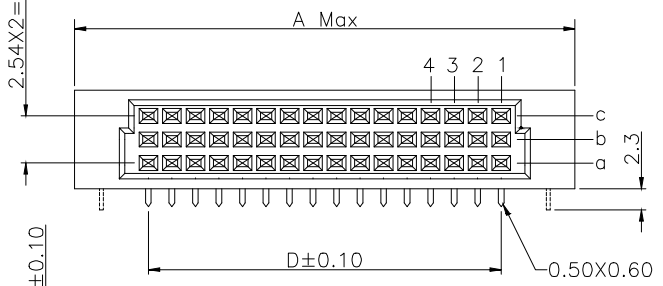
REV.	SPECIFICATION	ECN NO.	APPD.
R5		ECN220502	



Material and Plating:
Housing: PBT, UL94V-0, Beige
Contacts: Copper Alloy
Lock: Phosphor Bronze
Gold plated on Contact Area and 80u" Min Tin Plated on Solder Tail over Nickel 50u" Min.

Electrical Characteristics:
Current Rating: 2 AMP.
Dielectric Withstanding Voltage: AC 1000V For 1 minute.
Insulator Resistance: 10⁶ MΩ min. at DC 500V.
Contact Resistance: 20mΩ max. at DC 100mA.
Operating Temperature: -55°C~+125°C .

***RoHS Compliant**



9001- 1(2) 8 xx 1 C xx L1 A

Series: 1: 2.54mm, 2: 5.08mm, 8: Female, Position: 1: Dip Length

Blank: W/O Lock, L1: With Lock

00: G/F, 10: 10", 15: 15", 30: 30"

C: Selective Gold Plated

A: Tray Package

Dimension				
Position	A	B	C	D
48/32/24/16/8	54.0	48.26	44.40	38.10
30/20/15/10/5	38.8	33.02	29.20	22.86

Pitch	Position (P)	Rows with Contacts	Contact Arrangement	P/N
2.54mm	48	a-b-c		9001-18481C--
	32	a-c		9001-18321C--
	30	a-b-c		9001-18301C--
	20	a-c		9001-18201C--
	16	a--		9001-18161C--
5.08mm	10	a--		9001-18101C--
	24	a-b-c		9001-28241C--
	16	a-c		9001-28161C--
	15	a-b-c		9001-28151C--
	10	a-c		9001-28101C--
	8	a--		9001-28081C--
	5	a--		9001-28051C--

Tolerances	Dwg. No.	9001D18001	
x = ±0.5	Projection		
.x = ±0.25	Unit	mm	Scale 1:1
.xx = ±0.15	Drawn By	ZY 05/05'22	

Title:
9001 Series
DIN41612
Half R Type Female

WingTAT[®]
深圳市格林柏电子技术开发有限公司
P/N: 9001-1(2)8xx1CxxL1A

SHEET	1/1	Ver. No.	R5
-------	-----	----------	----

X-ON Electronics

Largest Supplier of Electrical and Electronic Components

Click to view similar products for [Board to Board & Mezzanine Connectors](#) category:

Click to view products by [WingTAT](#) manufacturer:

Other Similar products are found below :

[589158040000018](#) [MDF7C-18P-2.54DSA\(55\)](#) [FCN-268F036-G/BD](#) [FCN-268M012-G/0D](#) [FCN-268M024-G/1D](#) [MIS-048-01-F-D-DP-K](#)
[832-10-034-10-001000](#) [FX4C-80S-1.27DSA](#) [93696-330](#) [224393](#) [FCN-235D050-G/C](#) [210-93-314-41-105000](#) [MDF7-40DP-2.54DSA\(55\)](#)
[55323-1519](#) [069159702701000](#) [101A10019X](#) [105061100000861+](#) [75140-7012](#) [87471-650](#) [1744382-4](#) [063209](#) [10124054-515LF](#) [68685-603](#)
[8-1616154-3](#) [541371078](#) [IL-WX-10PB-HF-B-E1000E](#) [FX23-40P-0.5SV15B](#) [FCN-214J100-G/0](#) [354184](#) [P50-028-DDS-TG](#) [53309-2471](#)
[54546-2071](#) [1586617-1](#) [504248-1210](#) [504248-2010](#) [1-1437355-2](#) [9159005551906](#) [NDS100-004-BF](#) [93696-730LF](#) [91922-31141LF](#) [505274-](#)
[3440](#) [501493-2410](#) [504208-3410](#) [505006-0811](#) [505274-2040](#) [202436-1600](#) [202477-0414](#) [71660-7580](#) [73420-5192](#) [360-10-107-00-001000](#)