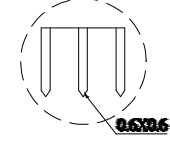
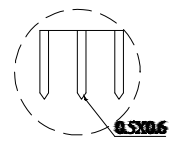
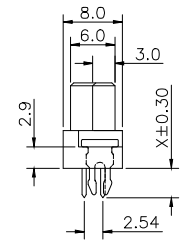
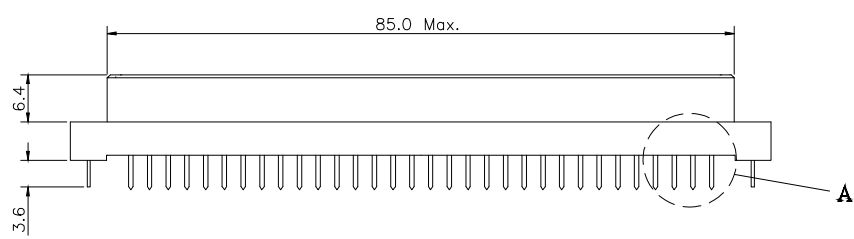
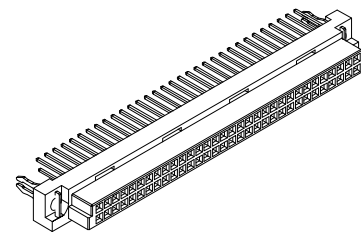
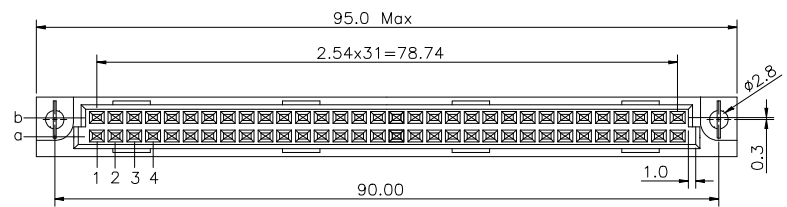


REV.	SPECIFICATION	ECN NO.	APPD.
R6		ECN181118	

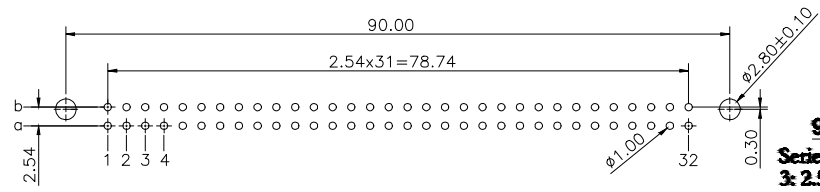
Material:

Housing: PBT, UL94V-0, Beige.
Contacts: Copper Alloy
Lock: Phosphor Bronze
Gold Plated on Contact Area and 80u" Min Tin or Gold Flash Plated on Solder tail over 50u" Min Nickel.
Electrical Characteristics:
Current Rating: 2 AMP.
Dielectric Withstanding Voltage: AC 1000V for 1minute.
Insulator Resistance: 10¹⁰ MΩ min. at DC 500V.
Contact Resistance: 20mΩ max. at DC 100m A.
Operating Temperature: -55°C ~ +125°C .
*** RoHS Compliant**



X length: 1/2
Detail-A
2:1

X length: W1/W2
Detail-A
2:1



P.C. Board Layout
(Tolerance: ±0.05)

9001- 3 2 xx 1 C xx L1 A
Series 3: 2.54mm
2: Female
Position 1: Dip Length
 2: Dip Length
 W1: Dip Length
 W2: Dip Length
C: Dip Tin Contact Gold
G: Gold Plated
L1: With Lock
A: Tray Package
Blank: W/O Lock
00: G/F
05: 05u"
10: 10u"
15: 15u"
30: 30u"

Pitch	Position	Rows with Contacts	Contact Arrange	X length			
				1	2	W1	W2
2.54mm	64	a b		4.0	2.5	13	17
	32	a -		P/N			
				9001-3254xCxxxA			
				9001-3232xCxxxA			

Tolerances	Dwg No.	9001D32006	Title
x = ±0.5	Projection		9001 Series DIN41612 B Type Female
.x = ±0.25	Unit	mm	
.xx = ±0.15	Scale	1:1	
	Drawn By	WQ 11/11'19	

WINGTAT [®]			
深圳市格林柏电子技术有限公司			
P/N: 9001-32xxxCxxL1A			
SHEET	1/1	Ver. No.	R6

X-ON Electronics

Largest Supplier of Electrical and Electronic Components

Click to view similar products for [Board to Board & Mezzanine Connectors](#) category:

Click to view products by [WingTAT](#) manufacturer:

Other Similar products are found below :

[589158040000018](#) [MDF7C-18P-2.54DSA\(55\)](#) [FCN-268F036-G/BD](#) [FCN-268M012-G/0D](#) [FCN-268M024-G/1D](#) [MIS-048-01-F-D-DP-K](#)
[832-10-034-10-001000](#) [FX4C-80S-1.27DSA](#) [93696-330](#) [224393](#) [FCN-235D050-G/C](#) [210-93-314-41-105000](#) [MDF7-40DP-2.54DSA\(55\)](#)
[55323-1519](#) [069159702701000](#) [101A10019X](#) [105061100000861+](#) [75140-7012](#) [87471-650](#) [1744382-4](#) [063209](#) [10124054-515LF](#) [68685-603](#)
[8-1616154-3](#) [541371078](#) [IL-WX-10PB-HF-B-E1000E](#) [FX23-40P-0.5SV15B](#) [FCN-214J100-G/0](#) [354184](#) [P50-028-DDS-TG](#) [53309-2471](#)
[54546-2071](#) [1586617-1](#) [504248-1210](#) [504248-2010](#) [1-1437355-2](#) [9159005551906](#) [NDS100-004-BF](#) [93696-730LF](#) [91922-31141LF](#) [505274-](#)
[3440](#) [501493-2410](#) [504208-3410](#) [505006-0811](#) [505274-2040](#) [202436-1600](#) [202477-0414](#) [71660-7580](#) [73420-5192](#) [360-10-107-00-001000](#)