

REV.	SPECIFICATION	ECN NO.	APPD.
R4		HCN190103	

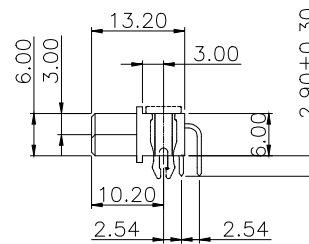
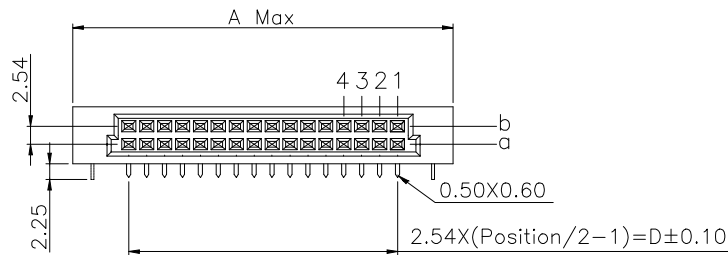
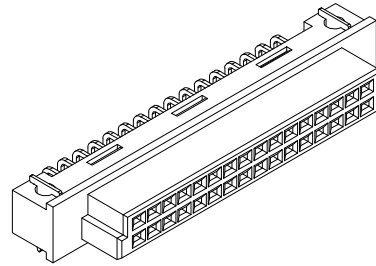
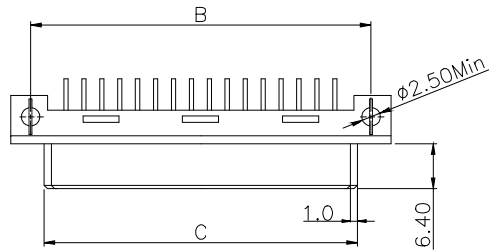
Material and Plating:

Housing: PBT, UL94V-0, Beige.
 Contacts: Copper Alloy.
 Gold Plated on Contact Area and 80u" Min Tin or Gold Flash
 Plated on Solder Tail over Nickel 50u" Min.
 Lock: Phosphor bronze.

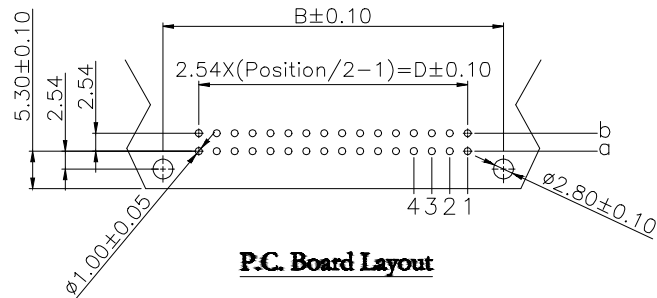
Electrical Characteristics:

Current Rating: 2 AMP.
 Dielectric Withstanding Voltage: AC1000V For 1 minute.
 Insulator Resistance: 1000MΩ min. at DC 500V.
 Contact Resistance: 20mΩ max. at DC 100mA.
 Operating Temperature: -55°C ~+125°C .

***RoHS Compliant**



Dimension				
Position	A	B	C	D
32/16/8	54.00	48.26	44.40	38.10
20/10	38.80	33.02	29.20	22.86



P.C. Board Layout

9001- 3 8 xx 1 C xx x A

Series: 3: 2.54mm, 4: 5.08mm
 3: Female
 Position: 1: Dip Length
 A: Tiny Package
 Blank: W/O Lock
 L: With Lock
 00: G/F
 10: 10u"
 15: 15u"
 30: 30u"
 C: Dip Tin
 Contact Gold
 G: Gold

Contact Arrange	Rows with Contacts	Position	Pin	Pitch
4 3 2 1	2	32	32	254mm
4 3 2 1	2	20	20	
4 3 2 1	2	32	16	508mm
4 3 2 1	2	32	16	
4 3 2 1	2	20	10	508mm
4 3 2 1	2	32	8	

Tolerances	Dwg. No.	9001D38001	
x = ±0.5	Projection	⊕ ↯	
.x = ±0.25	Unit	mm	Scale 1:1
.xx = ±0.15	Drawn By	dyq 01/04'19	

Title: 9001 Series
 DIN41612 Half
 Q,1/3Q Type Female

P/N:	9001-3(4)8xx1CxxxA		
SHEET	1/1	Ver.No.	R4

X-ON Electronics

Largest Supplier of Electrical and Electronic Components

Click to view similar products for [Board to Board & Mezzanine Connectors](#) category:

Click to view products by [WingTAT](#) manufacturer:

Other Similar products are found below :

[589158040000018](#) [MDF7C-18P-2.54DSA\(55\)](#) [FCN-268F036-G/BD](#) [FCN-268M012-G/0D](#) [FCN-268M024-G/1D](#) [MIS-048-01-F-D-DP-K](#)
[832-10-034-10-001000](#) [FX4C-80S-1.27DSA](#) [93696-330](#) [224393](#) [FCN-235D050-G/C](#) [210-93-314-41-105000](#) [MDF7-40DP-2.54DSA\(55\)](#)
[55323-1519](#) [069159702701000](#) [101A10019X](#) [105061100000861+](#) [75140-7012](#) [87471-650](#) [1744382-4](#) [063209](#) [10124054-515LF](#) [68685-603](#)
[8-1616154-3](#) [541371078](#) [IL-WX-10PB-HF-B-E1000E](#) [FX23-40P-0.5SV15B](#) [FCN-214J100-G/0](#) [354184](#) [P50-028-DDS-TG](#) [53309-2471](#)
[54546-2071](#) [1586617-1](#) [504248-1210](#) [504248-2010](#) [1-1437355-2](#) [9159005551906](#) [NDS100-004-BF](#) [93696-730LF](#) [91922-31141LF](#) [505274-](#)
[3440](#) [501493-2410](#) [504208-3410](#) [505006-0811](#) [505274-2040](#) [202436-1600](#) [202477-0414](#) [71660-7580](#) [73420-5192](#) [360-10-107-00-001000](#)