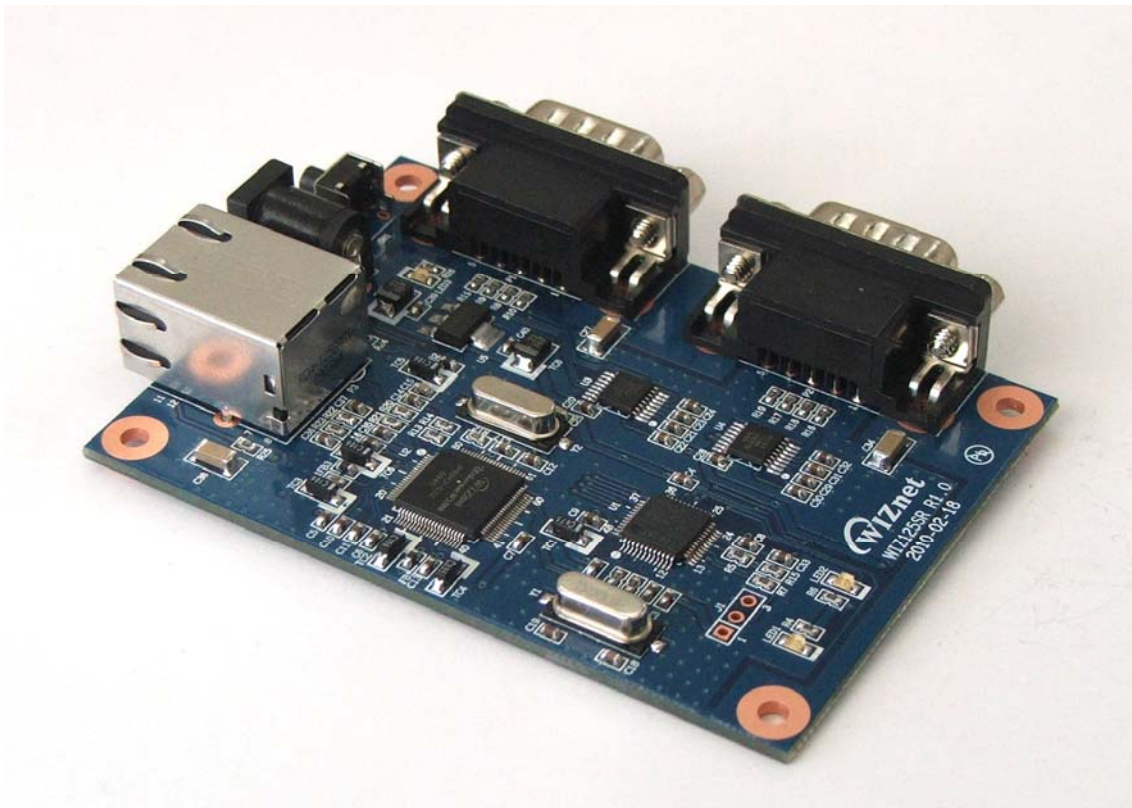


# WIZ125SR Datasheet

( Version 1.0 )



©2010 WIZnet Co., Ltd. All Rights Reserved.

☞ For more information, visit our website at <http://www.wiznet.co.kr>

## Document Revision History

Date	Revision	Changes
2010-03-19	V1.0	Official Release

## COPYRIGHT NOTICE

Copyright 2010 WIZnet Co., Ltd. All Rights Reserved.

Technical Support: [support@wiznet.co.kr](mailto:support@wiznet.co.kr)

Sales & Distribution: [sales@wiznet.co.kr](mailto:sales@wiznet.co.kr)

For more information, visit our website at <http://www.wiznet.co.kr>

## Table of Contents

1. Introduction.....	1
1.1 Key Features.....	1
1.2 Product Specification.....	2
1.3 WIZ125SR Interface.....	3
2. Hardware Specification.....	4
2.1 WIZ125SR Dimension.....	4
2.2 Connector Specification.....	5
2.2.1 RJ-45 Connector.....	5
2.2.2 DB-9 Connector.....	5

## Figures

FIGURE 1. WIZ125SR INTERFACE.....	3
FIGURE 2. WIZ125SR DIMENSIONS (UNIT : MM).....	4
FIGURE 3. RJ-45 PIN ASSIGNMENT.....	5

## Tables

TABLE 1. PRODUCT SPECIFICATION.....	2
TABLE 3. DB-9 RS-232C CONNECTOR PIN-ASSIGNMENT.....	5

# 1. Introduction

## 1.1 Key Features

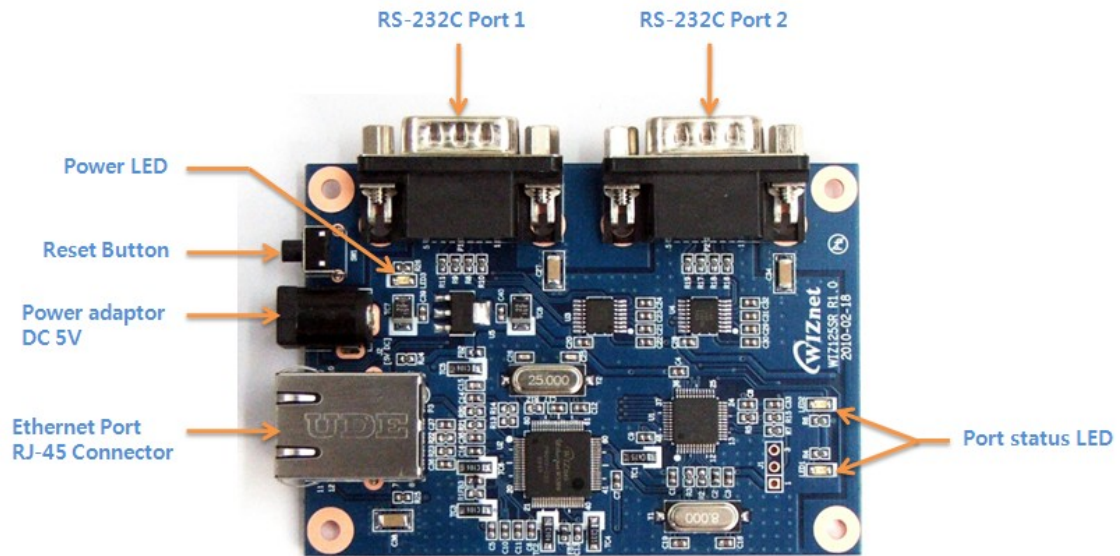
- 2 Port RS-232 to Ethernet
- Quick and Simple Internet Connection to Serial Devices
- Supporting Firmware Customization according to Customer's Requirement
- Guarantee Stable and Reliable Data Communication by using W5100 One Chip Solution
- Provide User-Friendly Configuration Tool Program
- Support PPPoE protocol and Authentication Configuration for ADSL users
- Support User Password for Security
- Support Serial Command for Serial Configuration
- 10/100 Mbps Ethernet & Max 230Kbps Serial Interface
- Support IP Configuration - Static, DHCP & PPPoE
- Support DNS
- RoHS Compliant

## 1.2 Product Specification

Category	Description
Network Protocol	TCP, UDP, IP, ARP, ICMP, IGMP, MAC, DHCP, PPPoE, DNS
Network Interface	10/100 Base-T Ethernet (Auto detection) / RJ-45
Serial Port	RS-232C DB-9 2port
CPU	Cortex-M3 core
Serial line format	8-N-1, 8-O-1, 8-E-1, 7-O-1, 7-E-1
Serial flow control	None, XON/XOFF, CTS/RTS
Serial signal	TXD, RXD, RTS, CTS, GND
Software	Remote Download & Configuration
Serial Speed	1200bps ~ 230Kbps
Temperature	0 ~ 70°C (Operating), -40 ~ 85°C (Storage)
Humidity	10~90%
Power	DC 5V, 220mA(MAX)
Size	88.5mm x 65.5mm x 18mm ( Include connector size )

**Table 1. Product Specification**

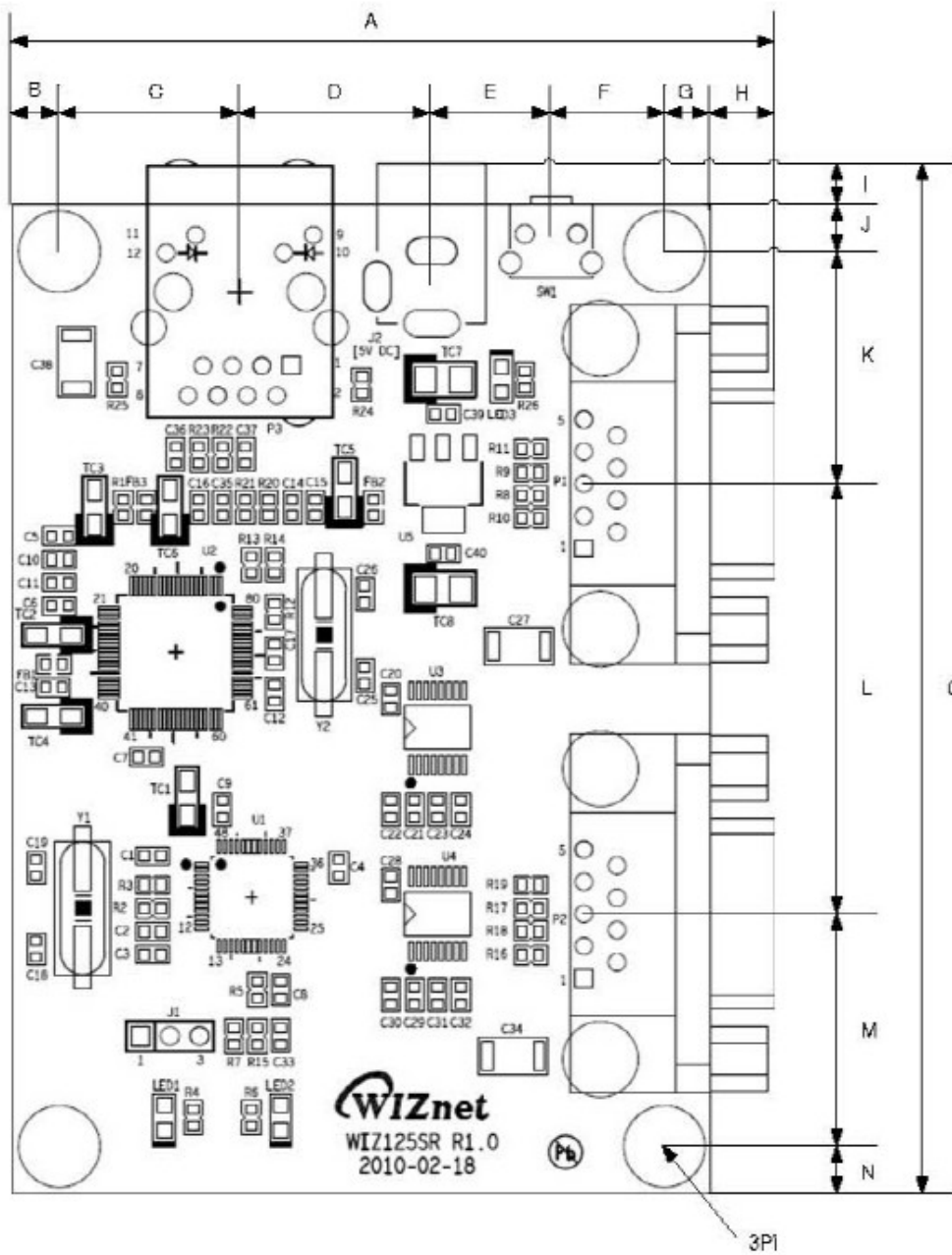
### 1.3 WIZ125SR Interface



**Figure 1. WIZ125SR Interface**

## 2. Hardware Specification

### 2.1 WIZ125SR Dimension

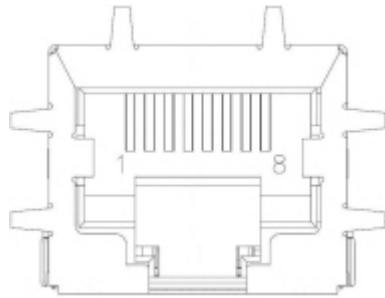


A	65.5	B	4.0	C	15.5	D	16.5
E	10.5	F	9.5	G	4.0	H	5.5
I	3.5	J	4.0	K	20.0	L	37.0
M	20.0	N	4.0	O	88.5		

Figure 2. WIZ125SR Dimensions (unit : mm)

## 2.2 Connector Specification

### 2.2.1 RJ-45 Connector



Pin	Signal
1	TX+
2	TX-
3	RX+
6	RX-

**Figure 3. RJ-45 PIN Assignment**

### 2.2.2 DB-9 Connector

Pin Number	Signal	Description
1	-	
2	RXD1 / RXD2	Receive Data for Port 1 & Port 2
3	TXD1 / TXD2	Transmit Data for Port 1 & Port 2
4	-	
5	GND	System Ground
6	-	
7	RTS1 / RTS2	Request To Send for Port 1 & Port 2
8	CTS1 / CTS2	Clear To Send for Port 1 & Port 2
9	-	

**Table 2. DB-9 RS-232C Connector PIN-Assignment**



## X-ON Electronics

Largest Supplier of Electrical and Electronic Components

*Click to view similar products for [Gateways category](#):*

*Click to view products by [WIZnet manufacturer](#):*

Other Similar products are found below :

[BB-SG30000324-51](#) [MTCDTIP-LEU1-275L-868](#) [MTCDT-LEU1-246A-868-EU-GB](#) [WOP-2000G-N2AE](#) [ESRP-PCS-ECU1251](#) [BB-SG30300525-42](#) [BB-SG30500520-42](#) [SGX5150202US](#) [SGX5150102US](#) [RG191](#) [UPS-EDGE-X70864-U01](#) [UPS-EDIOT-X70864-UW01](#) [ADAM-4572-CE](#) [ADAM-6717-A](#) [ECU-1152-R11ABE](#) [EKI-1222-CE](#) [EKI-1224CI-CE](#) [ICR-3201](#) [ICR-3201-W](#) [ICR-3211B](#) [ICR-3241](#) [UNO-220-P4N1AE](#) [UNO-2271G-W1032GE](#) [WISE-3310-D100L1E](#) [WISE-3610ILS-51A1N](#) [WISE-6610-E100-A](#) [WISE-6610-N100-A](#) [AKX00016](#) [MESR901](#) [MESR902T](#) [X2-Z11-EM-A](#) [X2-HMU-EM-B](#) [X4-Z1U-B101-A](#) [SGX5150020US](#) [SGX5150225US](#) [SGX51501M2ES](#) [SGX51502N5ES](#) [XPC240200B-02](#) [XPC240400B-02](#) [XPC240100S-02](#) [XPC240200S-02](#) [XPC240300S-02](#) [XPC240400S-02](#) [XPC250100S-02](#) [XPE200100S](#) [WSDA-2000](#) [WSDA-200-USB](#) [1120780001](#) [1120780002](#) [MTCDT-246A-868-EU-GB](#)