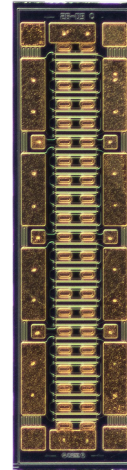


CGHV60075D5

75 W, 6.0 GHz, GaN HEMT Die

Description

Cree's CGHV60075D5 is a gallium nitride (GaN) High Electron Mobility Transistor (HEMT). GaN has superior properties compared to silicon or gallium arsenide, including higher breakdown voltage, higher saturated electron drift velocity, and higher thermal conductivity. GaN HEMTs offer greater power density and wider bandwidths compared to Si and GaAs transistors.



Features

- 19 dB Typical Small Signal Gain at 4 GHz
- 17 dB Typical Small Signal Gain at 6 GHz
- 65% Typical Power Added Efficiency at 4 GHz
- 60% Typical Power Added Efficiency at 6 GHz
- 75 W Typical P_{SAT}
- 50 V Operation
- High Breakdown Voltage
- Up to 6 GHz Operation

Applications

- 2-Way Private Radio
- Broadband Amplifiers
- Cellular Infrastructure
- Test Instrumentation
- Class A, AB, Linear amplifiers suitable for OFDM, W-CDMA, EDGE, CDMA waveforms



Packaging Information

- Bare die are shipped in Gel-Pak® containers
- Non-adhesive tacky membrane immobilizes die during shipment

 Large Signal Models Available for ADS and MWO

RoHS
COMPLIANT



Absolute Maximum Ratings (not simultaneous)

Parameter	Symbol	Rating	Units	Conditions
Drain-Source Voltage	V_{DSS}	150	V_{DC}	25 °C
Gate-to-Source Voltage	V_{GS}	-10, +2	V_{DC}	25 °C
Storage Temperature	T_{STG}	-65, +150	°C	
Operating Junction Temperature	T_J	225	°C	
Maximum Drain Current ¹	I_{MAX}	6.3	A	25 °C
Maximum Forward Gate Current	I_{GMAX}	10	mA	25 °C
Thermal Resistance, Junction to Case (packaged) ²	$R_{\theta JC}$	2.67	°C/W	85 °C, 41.6W Dissipation
Thermal Resistance, Junction to Case (die only)	$R_{\theta JC}$	1.66	°C/W	85 °C, 41.6W Dissipation
Mounting Temperature	T_s	320	°C	30 seconds

Notes:

¹ Current limit for long term, reliable operation

² Eutectic die attach using 80/20 AuSn mounted to a 10 mil thick Cu15Mo85 carrier

Electrical Characteristics (Frequency = 6 GHz unless otherwise stated; $T_c = 25^\circ\text{C}$)

Characteristics	Symbol	Min.	Typ.	Max.	Units	Conditions
DC Characteristics						
Gate Pinch-Off Voltage	V_p	-3.8	-3.0	-2.3	V	$V_{DS} = 10\text{ V}, I_D = 10\text{ mA}$
Drain Current ¹	I_{DSS}	8	10	-	A	$V_{DS} = 6\text{ V}, V_{GS} = 2.0\text{ V}$
Drain-Source Breakdown Voltage	V_{BD}	125	-	-	V	$V_{GS} = -8\text{ V}, I_D = 10\text{ mA}$
On Resistance	R_{ON}	-	0.28	-	Ω	$V_{DS} = 0.1\text{ V}$
Gate Forward Voltage	V_{G-ON}	-	1.9	-	V	$I_{GS} = 10\text{ mA}$
RF Characteristics						
Small Signal Gain	G_{SS}	-	17	-	dB	$V_{DD} = 50\text{ V}, I_{DQ} = 125\text{ mA}$
Saturated Power Output ^{2,3}	P_{SAT}	-	75	-	W	$V_{DD} = 50\text{ V}, I_{DQ} = 125\text{ mA}$
Drain Efficiency ³	η	-	60	-	%	$V_{DD} = 50\text{ V}, I_{DQ} = 125\text{ mA}, P_{SAT} = 75\text{ W}$
Intermodulation Distortion	IM3	-	-30	-	dBc	$V_{DD} = 50\text{ V}, I_{DQ} = 125\text{ mA}, P_{OUT} = 75\text{ W PEP}$
Output Mismatch Stress	VSWR	-	-	10 : 1	Y	No damage at all phase angles, $V_{DD} = 50\text{ V}, I_{DQ} = 125\text{ mA}, P_{OUT} = 75\text{ W CW}$
Dynamic Characteristics						
Input Capacitance	C_{GS}	-	9.51	-	pF	$V_{DS} = 50\text{ V}, V_{GS} = -8\text{ V}, f = 1\text{ MHz}$
Output Capacitance	C_{DS}	-	3.6	-	pF	$V_{DS} = 50\text{ V}, V_{GS} = -8\text{ V}, f = 1\text{ MHz}$
Feedback Capacitance	C_{GD}	-	0.26	-	pF	$V_{DS} = 50\text{ V}, V_{GS} = -8\text{ V}, f = 1\text{ MHz}$

Notes:

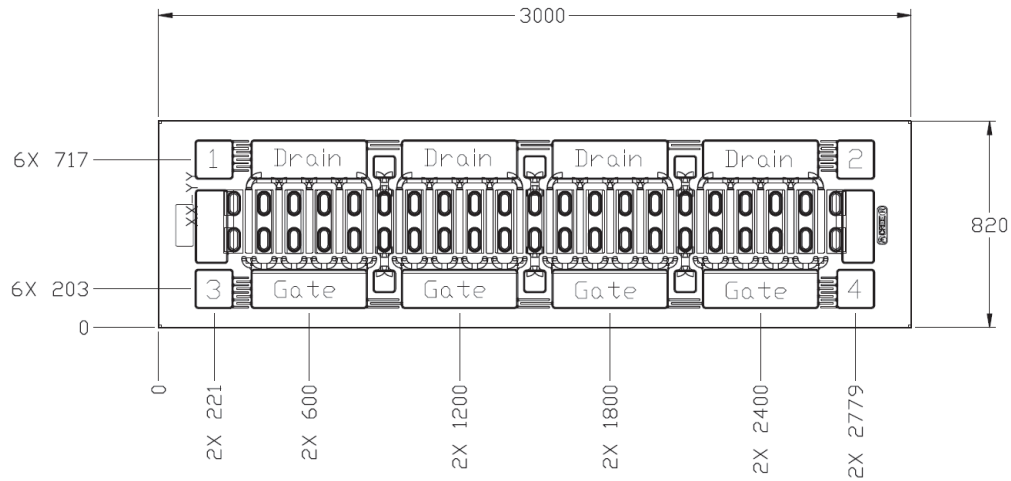
¹ Scaled from PCM data

² P_{SAT} is defined as $I_G = 1.0\text{ mA}$

³ Drain Efficiency = P_{OUT} / P_{DC}



DIE Dimensions (units in microns)



Overall die size 3000 x 820 (+0/-50) microns, die thickness 100 microns.
 All Gate and Drain pads must be wire bonded for electrical connection.

Assembly Notes:

- Recommended solder is AuSn (80/20) solder. Refer to Cree’s website for the Eutectic Die Bond Procedure application note at www.cree.com/rf/document-library
- Vacuum collet is the preferred method of pick-up
- The backside of the die is the Source (ground) contact
- Die back side gold plating is 5 microns thick minimum
- Thermosonic ball or wedge bonding are the preferred connection methods
- Gold wire must be used for connections
- Use the die label (XX-YY) for correct orientation

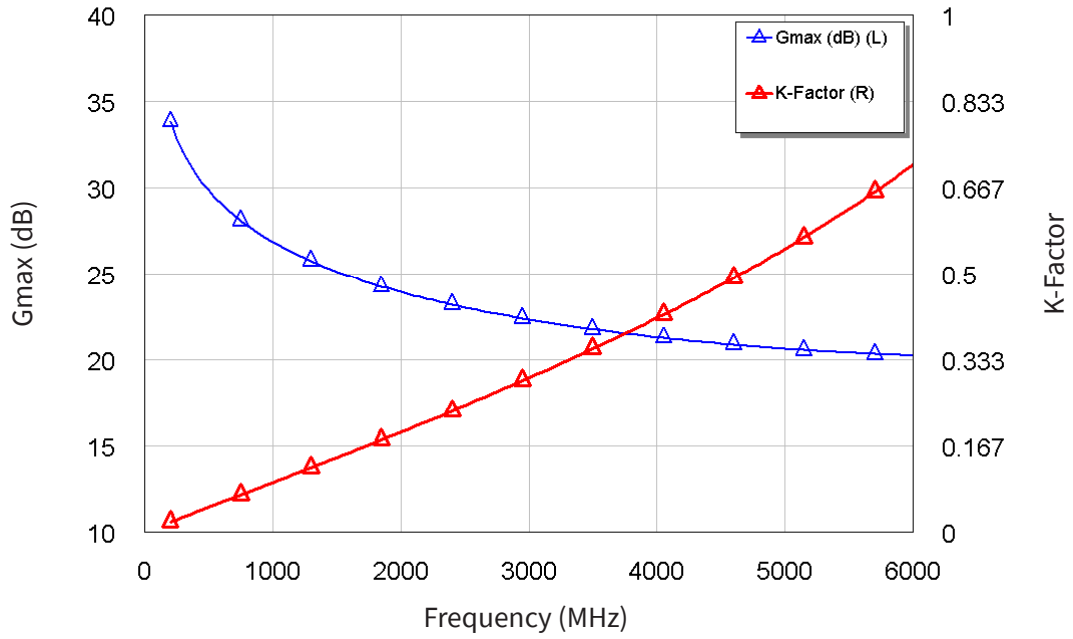
Electrostatic Discharge (ESD) Classifications

Parameter	Symbol	Class	Test Methodology
Human Body Model	HBM	1A > 250 V	JEDEC JESD22 A114-D
Charge Device Model	CDM	1 (200 < 500 V)	JEDEC JESD22 C101-C



Typical Performance

Figure 1. CGHV60075D5 G_{MAX} and K Factor vs. Frequency at Tcase = 25°C
 $V_{DD} = 50V, I_{DQ} = 125 mA$



Typical Die S-Parameters (Small Signal, $V_{DS} = 50$ V, $I_{DQ} = 125$ mA, magnitude / angle)

Frequency	Mag S11	Ang S11	Mag S21	Ang S21	Mag S12	Ang S12	Mag S22	Ang S22
0.5	0.93309	-154.44	14.266	88.053	0.014402	-0.85181	0.35448	-119.95
0.6	0.93352	-158.34	11.838	83.444	0.01433	-5.2391	0.3779	-122.32
0.7	0.93452	-161.14	10.06	79.434	0.014195	-9.0268	0.40373	-124.1
0.8	0.93586	-163.24	8.7019	75.832	0.014019	-12.407	0.43075	-125.62
0.9	0.93743	-164.87	7.6297	72.531	0.013813	-15.485	0.45814	-127.01
1	0.93917	-166.17	6.761	69.468	0.013583	-18.326	0.48532	-128.36
1.1	0.94101	-167.24	6.0431	66.6	0.013336	-20.972	0.51193	-129.69
1.2	0.94292	-168.13	5.4398	63.9	0.013076	-23.449	0.5377	-131
1.3	0.94485	-168.89	4.926	61.348	0.012806	-25.779	0.56247	-132.31
1.4	0.9468	-169.55	4.4834	58.931	0.01253	-27.974	0.58611	-133.6
1.5	0.94872	-170.12	4.0987	56.635	0.012249	-30.047	0.60859	-134.86
1.6	0.95062	-170.64	3.7616	54.451	0.011966	-32.007	0.62986	-136.11
1.7	0.95247	-171.1	3.4641	52.373	0.011683	-33.861	0.64994	-137.32
1.8	0.95426	-171.51	3.2003	50.392	0.011401	-35.619	0.66885	-138.51
1.9	0.956	-171.89	2.9648	48.503	0.011122	-37.283	0.68662	-139.66
2	0.95767	-172.24	2.7539	46.699	0.010846	-38.863	0.70331	-140.77
2.1	0.95926	-172.56	2.5641	44.976	0.010574	-40.36	0.71895	-141.85
2.2	0.96079	-172.86	2.3927	43.33	0.010307	-41.781	0.73359	-142.89
2.3	0.96225	-173.14	2.2375	41.754	0.010045	-43.13	0.74731	-143.9
2.4	0.96364	-173.41	2.0963	40.247	0.0097893	-44.411	0.76014	-144.87
2.5	0.96496	-173.65	1.9677	38.802	0.0095396	-45.629	0.77216	-145.8
2.6	0.96621	-173.89	1.8502	37.416	0.0092961	-46.787	0.78341	-146.7
2.7	0.9674	-174.11	1.7425	36.087	0.0090588	-47.888	0.79393	-147.57
2.8	0.96853	-174.32	1.6437	34.811	0.0088279	-48.935	0.80379	-148.4
2.9	0.96959	-174.52	1.5528	33.584	0.0086033	-49.933	0.81303	-149.2
3	0.9706	-174.71	1.4689	32.404	0.0083851	-50.882	0.82169	-149.97
3.2	0.97246	-175.07	1.3198	30.177	0.0079668	-52.647	0.83741	-151.43
3.4	0.97412	-175.4	1.1918	28.105	0.0075724	-54.252	0.85128	-152.78
3.6	0.97561	-175.71	1.081	26.175	0.0072005	-55.712	0.86354	-154.03
3.8	0.97695	-175.99	0.98461	24.373	0.0068495	-57.041	0.87439	-155.19
4	0.97815	-176.26	0.90032	22.681	0.0065185	-58.254	0.88404	-156.27
4.2	0.97923	-176.5	0.82619	21.091	0.0062057	-59.361	0.89265	-157.28
4.4	0.9802	-176.74	0.76072	19.592	0.0059099	-60.372	0.90034	-158.21
4.6	0.98108	-176.96	0.70262	18.175	0.0056299	-61.295	0.90725	-159.09
4.8	0.98187	-177.17	0.65085	16.832	0.0053644	-62.137	0.91345	-159.91
5	0.98259	-177.36	0.60454	15.558	0.0051122	-62.903	0.91905	-160.68
5.2	0.98324	-177.55	0.56297	14.343	0.0048724	-63.603	0.92411	-161.41
5.4	0.98383	-177.73	0.52552	13.185	0.0046441	-64.237	0.9287	-162.09
5.6	0.98437	-177.91	0.49168	12.078	0.0044262	-64.81	0.93287	-162.73
5.8	0.98487	-178.07	0.46099	11.017	0.0042182	-65.327	0.93667	-163.34
6	0.98532	-178.23	0.4331	9.9987	0.0040191	-65.79	0.94015	-163.92

To download the s-parameters in s2p format, go to the [CGHV60075D5 Product Page](#) and click on the documentation tab.



Part Number System

CGHV60075D5

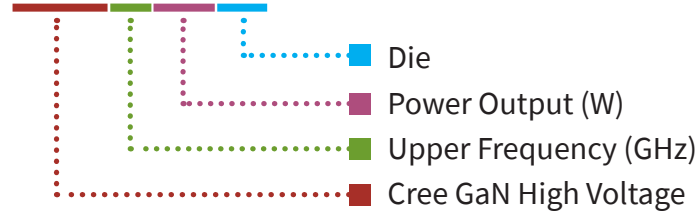


Table 1.

Parameter	Value	Units
Upper Frequency ¹	6.0	GHz
Power Output	75	W
Package	Bare Die	-

Note¹: Alpha characters used in frequency code indicate a value greater than 9.9 GHz. See Table 2 for value.

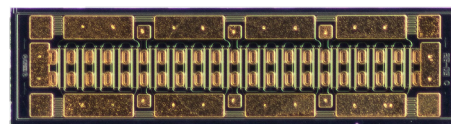
Table 2.

Character Code	Code Value
A	0
B	1
C	2
D	3
E	4
F	5
G	6
H	7
J	8
K	9
Examples:	1A = 10.0 GHz 2H = 27.0 GHz



Product Ordering Information

Order Number	Description	Unit of Measure
CGHV60075D5	Bare Die	Each





For more information, please contact:

4600 Silicon Drive
Durham, North Carolina, USA 27703
www.wolfspeed.com/RF

Sales Contact
RFSales@cree.com

Notes

Disclaimer

Specifications are subject to change without notice. “Typical” parameters are the average values expected by Cree in large quantities and are provided for information purposes only. Cree products are not warranted or authorized for use as critical components in medical, life-saving, or life-sustaining applications, or other applications where a failure would reasonably be expected to cause severe personal injury or death. No responsibility is assumed by Cree for any infringement of patents or other rights of third parties which may result from use of the information contained herein. No license is granted by implication or otherwise under any patent or patent rights of Cree.

X-ON Electronics

Largest Supplier of Electrical and Electronic Components

Click to view similar products for [RF JFET Transistors](#) category:

Click to view products by [Wolfspeed](#) manufacturer:

Other Similar products are found below :

[CE3514M4](#) [CE3514M4-C2](#) [CE3520K3-C1](#) [CE3521M4](#) [CE3521M4-C2](#) [CE3512K2-C1](#) [CE3520K3](#) [CG2H80030D-GP4](#) [TGF2023-2-02](#)
[NPT1004D](#) [MAGX-011086](#) [NPT25015D](#) [JANTXV2N4858](#) [MMBFJ211](#) [CGHV27015S](#) [NPT2021](#) [NPTB00025B](#) [2SK3557-6-TB-E](#)
[J211_D74Z](#) [NPTB00004A](#) [QPD0020](#) [QPD1006](#) [QPD1016](#) [QPD1025L](#) [QPD1029L](#) [QPD1881L](#) [T2G6001528-Q3](#) [SKY65050-372LF](#)
[TGF2965-SM](#) [QPD1009](#) [QPD1010](#) [J304](#) [CGH27015F](#) [CGH55015F1](#) [CMPA801B030F](#) [GTVA262711FA-V2-R0](#) [GTVA262701FA-V2-R0](#)
[CGH40006S](#) [CGH40010F](#) [CGH40025F](#) [CGH40035F](#) [CGH40045F](#) [CGH40120F](#) [CGH55015F2](#) [CGH60008D](#) [CGH60030D](#) [CGHV14500F](#)
[CGHV1F006S](#) [CGHV1J006D](#) [CGHV27030S](#)