

# WORKPRO®



## 2019 PRODUCTS CATALOG

CUTTING TOOLS   FASTENING TOOLS   HOLDING TOOLS   STRIKING TOOLS  
FINISHING TOOLS   MEASURING TOOLS   ELECTRICAL TOOLS   PLUMBING TOOLS   STORAGES  
TOOL SETS   AUTOMOTIVE TOOLS   POWER TOOLS & ACCESSORY   LASER TOOLS

# WORKPRO®

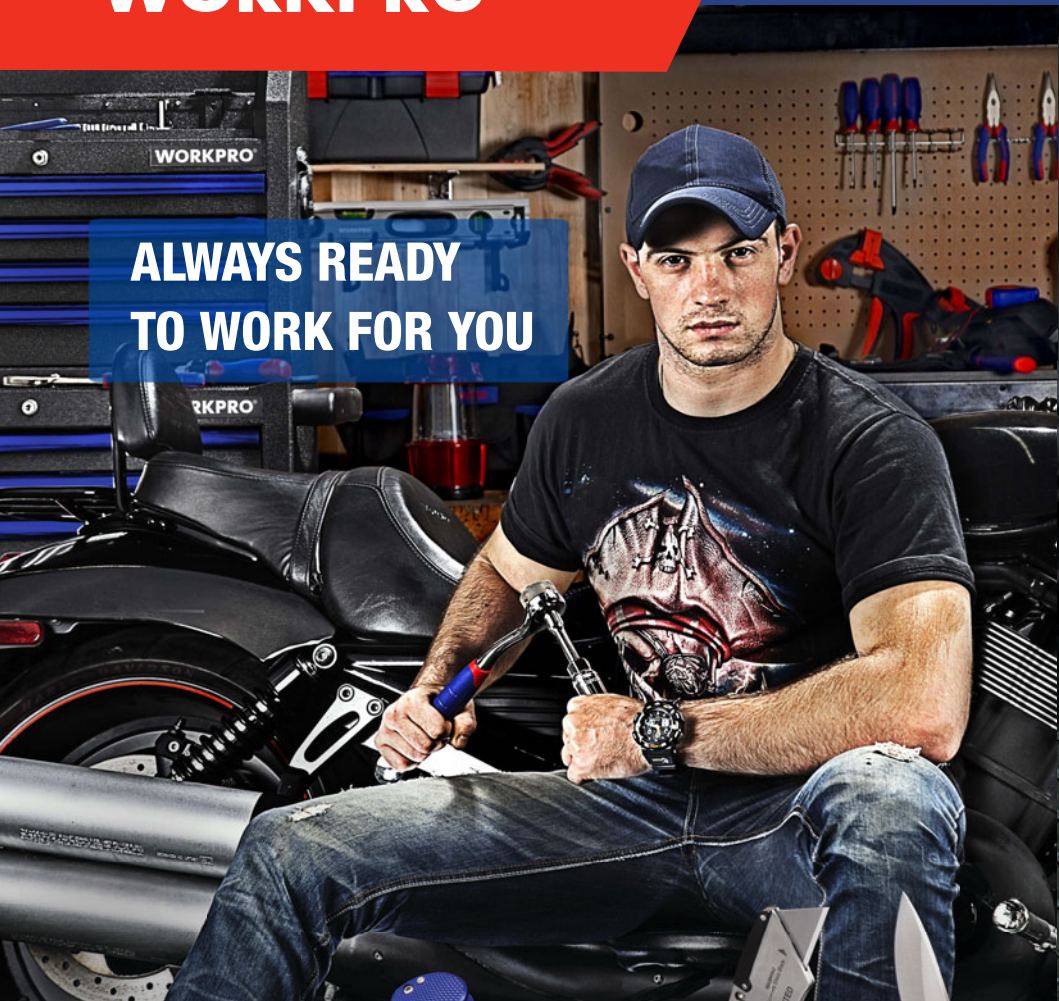
WORKPRO - a brand developed by GreatStar especially for home users and DIYers. In the last 25 years with a lot of studies and testings we manufactured lots of products. Now a broad variety of tools specifically designed for daily life is ready - WORKPRO. We will continue to design products with superior features and you will always find what you need here.





# WORKPRO®

**ALWAYS READY  
TO WORK FOR YOU**



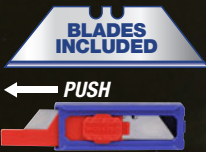
## QUICK-CHANGE FOLDING UTILITY KNIFE WITH DETACHABLE LED LIGHT

**NEW**

★STOCK

No. W011033

- Anodized aluminum handle with comfort grip
- Foldable design, easily folds to a compact size to fit in pocket
- Rope cutter
- Quick-change blade mechanism
- Razor-sharp tempered SK5 blade
- Accepts all standard utility knife blade
- With detachable LED light



**QUICK CHANGE**



**NEW**

★STOCK

No. W011030

## QUICK-CHANGE MINI FOLDING UTILITY KNIFE

**QUICK CHANGE**



- Anodized aluminum handle
- Foldable design, easily folds to a compact size to fit in pocket
- Quick-change blade mechanism
- Razor-sharp tempered SK5 blade
- Accepts all standard utility knife blade





## QUICK-CHANGE FOLDING UTILITY KNIFE WITH WIRE STRIPPER

**NEW**

★**STOCK**

No. W011034



With wire stripper for the AWG 10-22

- Anodized aluminum handle with comfort grip
- Foldable design, easily folds to a compact size to fit in pocket
- Rope cutter
- Quick-change blade mechanism
- Razor-sharp tempered SK5 blade
- Accepts all standard utility knife blade
- With wire stripper for the AWG 10-22



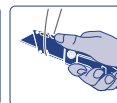
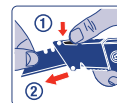
No. W011031

## RETRACTABLE FOLDING UTILITY KNIFE WITH BLADE STORAGE

**NEW**

★**STOCK**

- Anodized aluminum handle with comfort grip
- Foldable design, easily folds to a compact size to fit in pocket
- Rope cutter
- Quick-change blade mechanism
- Razor-sharp tempered SK5 blade
- Accepts all standard utility knife blade



**NEW**

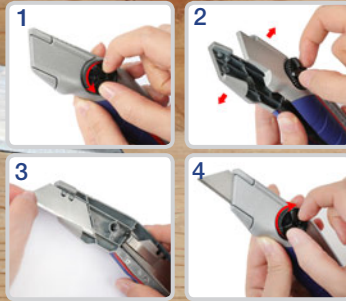
## HEAVY DUTY FIXED BLADE UTILITY KNIFE

No. W013028

★**STOCK**

- Razor-sharp tempered SK5 blade
- Durable zinc alloy housing
- Comfort, anti-slip soft grip
- Fixed blade for more cutting power
- Built-in blade chamber stored up to 5 blades
- Accepts all standard utility knife blades

**Quick change blade, NO tools required**



x 10

No. W013029

**NEW**

★**STOCK**

## HEAVY DUTY RETRACTABLE UTILITY KNIFE

**QUICK CHANGE**



- Razor-sharp tempered SK5 blade
- Durable zinc alloy housing with twine cutter
- Multi-position retractable blade for all purpose cutting
- Quick-change blade mechanism
- Built-in blade chamber stored up to 5 blades



x 10





No. W011012

★**STOCK**

## QUICK-CHANGE FOLDING UTILITY KNIFE



W011013

W011012  
Mini

- Stainless steel and polished hardwood handle
- Quick-change mechanism

No. W011009

★**STOCK  
HOT**

## FOLDING UTILITY KNIFE WITH BLADE STORAGE



W011009

W011008  
Mini

- Quick-change mechanism
- Folding utility knife blade
- With five extra blades stored in handle
- Lightweight ABS handle with blade storage
- Stainless steel belt clip

No. W011020

## MINI FOLDING UTILITY KNIFE



W011020

W011020	1PC
W000009	2PC

★**STOCK  
HOT**



W000009

- Stainless steel construction for durability and anti-corrosion
- Quick blade change mechanism
- Use to cut and score all types of surfaces
- Accepts all standard utility knife blades
- Features pocket clip, closed 4-inch

No. W011003

★**STOCK  
HOT**

## MINI ALUMINUM FOLDING UTILITY KNIFE



- Patented quick-change mechanism
- Lightweight anodized aluminum handle
- Includes belt clip for easy access
- Accepts all standard utility knife blades

No. W011011

★**STOCK  
HOT**

## TWIN BLADE FOLDING UTILITY KNIFE



- Fine blade knife and utility knife
- Aluminum handle
- Patented quick-change mechanism

## RETRACTABLE FOLDING UTILITY KNIFE

No. W011007



Quick-change mechanism

- Blades locked in 4 extended positions
- Quick-change mechanism
- Anodized aluminum handle
- Accepts all standard utility knife blades

Pocket clip  
Anodized aluminum handle

No. W011001

★STOCK  
**HOT**

### FOLDING UTILITY KNIFE



- Durable high impact plastic handle with pocket clip
- Zinc-alloy structure
- Patented quick-change mechanism
- Accepts all standard utility knife blades
- With 10 extra blades

No. W011002

★STOCK

### FOLDING UTILITY KNIFE



- Patented quick-change mechanism
- Lightweight anodized aluminum handle
- Includes belt clip for easy access
- Accepts all standard utility knife blades

No. W011014

### FOLDING UTILITY KNIFE



- Uses standard utility knife blades
- Folds closed for safety, locks open
- Quick-change mechanism



## AUTO-LOADING RETRACTABLE UTILITY KNIFE

No. W013012

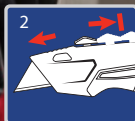
- Die-cast aluminum body with comfort grip
- Blades locks in 3 extended positions or fully closed
- Extra blades stored in handle
- Hinge mechanism for easy links



**1. Release and remove the old blade**



**2. Engage new blade and move forward to load new blade**



**3. Quick-open to refill blades (5 blades capacity)**



**5** BLADES INCLUDED

No. W013015

★STOCK

### QUICK-CHANGE UTILITY KNIFE



**x3**

- Die-cast aluminum body with comfort grip
- 3PC extra blades stored in handle

## AUTO-LOADING ALUMINUM SNAP-OFF KNIFE

★**STOCK**



**5** BLADES INCLUDED

W012010	18mm
W012009	9mm

- Lightweight anodized aluminum construction
- Smooth sliding mechanism
- Removable blade snapper included in knife cap
- Stainless steel blade dispenser cartridge resists rust
- Automatic reload action

No. W012007

★**STOCK**

### PLASTIC SNAP-OFF KNIFE



W012007  
9mm



W012008  
18mm

- Positive blade auto-lock
- 3 or 5 self-loading blades included
- Stainless steel flute

No. W012011

★**STOCK**

### HEAVY DUTY SNAP-OFF KNIFE



W012011  
9mm



W012012  
18mm

- Zinc-alloy construction, stainless steel cartridge
- Ergonomic cushion grip
- Auto-reload blade system
- 3PC or 5PC snap-off blades included

No. W012003

★**STOCK**

### 10PC 9MM/18MM SNAP-OFF KNIFE BLADES



W012003  
9mm



W012004  
18mm

- Razor-sharp tempered SK5 blades
- Fits most 9mm /18mm snap-off knives

No. W012005

★**STOCK**

### SNAP-OFF KNIFE



W012005  
9mm



W012006  
18mm

- Snap-off used blades for a new cutting edge
- High impact ABS housing



## 16-IN-1 MULTI TOOL

No. W014070

- Stainless steel handle and components
- Include: long nose pliers, wire cutter, curved jaw pliers, hang hole, can opener, wire stripper, phillips screwdriver, serrated blade, saw, hardwire cutters, knife, file, slotted screwdriver (M), reamer, bottle opener, slotted screwdriver (L)

★STOCK

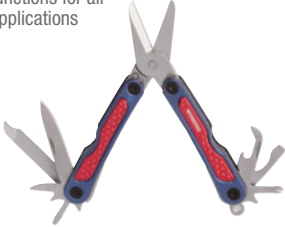


No. W014001

★STOCK

## 10-IN-1 MINI MULTI-PURPOSE SCISSORS

- Stainless steel blades and tools
- Multi-functions for all basic applications



No. W014002

★STOCK

## 8-IN-1 MULTI-FUNCTION STRIPPER

- Quickly strips 12-18 AWG wire
- Stainless steel blade with aluminum textured handle for non-slip usage



No. W014003

★STOCK

## 9-IN-1 MULTI-FUNCTION SNIPS

- Stainless steel blades and tools
- Heavy duty stainless steel handle with rubber grip
- Cuts: leather, rope, vinyl, thin wire, twine, light plastics, paper and more
- Bonus pouch



No. W014004

★STOCK

## 15-IN-1 MULTI-PURPOSE PLIERS

- Precision punched
- Machined surface
- Stainless steel components
- Compact folding design
- Ideal selection for general purpose use
- Includes nylon pouch



No. W014006

★STOCK

## 15-IN-1 ALUMINUM HANDLE MULTI TOOL

- Lightweight aluminum handle for strength & durability
- Stainless steel components
- Spring loaded action for easy operation
- Foldable design for easy storage



No. W014007

★STOCK

## 15-IN-1 MULTI-FUNCTION TOOL

- Stainless steel blades and tools
- Multi-functions for all basic applications



No. W000314

★STOCK

## 2PC MULTI-PURPOSE TOOL SET



- 15-in-1 multi-purpose tool
- 3" one handed opening knife
- Durable pouch included

No. W000302

★STOCK

## 4PC MULTI TOOL SET



- 12-in-1 multi-purpose tool
- Mini multi-purpose tool
- 2-1/8" one handed opening knife
- 2-5/8" one handed opening knife
- Durable pouch included

W014061 12"

No. W000316

★STOCK

## 3PC MULTI-PURPOSE TOOL SET



- 15-in-1 multi-purpose tool
- Mini multi-purpose tool
- Stainless steel components
- Compact folding design
- Ideal selection for general purpose use
- Includes nylon pouch

No. W000304

★STOCK

## 2PC MULTI-FUNCTION PLIERS AND QUICK-RELEASE KNIFE



- 12-in-1 multi-function pliers
- Stainless steel components
- Compact folding design
- Ideal selection for general purpose use

No. W000317

## 3PC MULTI-FUNCTION TOOL SET

- 12-in-1 multi-function pliers
- 1PC 9-in-1 multi-function pliers
- 5-in-1 multi-purpose tool
- Compact folding design for convenient storage and transportation
- Stainless steel blades and tools
- Multi-functions for all basic applications





No. W014023

★**STOCK**

## 3.5" FOLDING KNIFE



- Rust-resistant stainless steel blade
- Anodized aluminum handle
- Cord cutter

No. W014031

★**STOCK**

## 3" FOLDING KNIFE WITH BITS



- Rust-resistant stainless steel blade
- Rubberized coating handle with bits holder
- Black finish
- 4PC double head bits included

No. W014020

★**STOCK**

## 3.5" FOLDING KNIFE

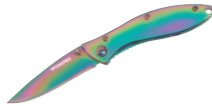


- Rust-resistant stainless steel blade
- Pocket clip included

No. W014021

★**STOCK**

## 2-3/4" FOLDING KNIFE



- Stainless steel blade
- Titanium coated
- Belt clip included

No. W014028

★**STOCK**

## TACTICAL CAMO KNIFE



- Rust-resistant stainless steel blade
- Pocket clip included

No. W014029

★**STOCK**

## BLACK FOLDING KNIFE



- Rust-resistant stainless steel blade
- Pocket clip included

No. W014030

★**STOCK**

## 2-3/4" FOLDING KNIFE



- Rust-resistant stainless steel blade
- Good quality wood handle

No. W014051

★**STOCK**

## 10" ROGUE KNIFE



- Rust-resistant stainless steel blade
- Comfortable grip handle
- Full tang
- Bonus durable pouch

No. W014047

★**STOCK**

## TACTICAL MACHETE

- Sharp steel blade with saw back
- With black finish
- Comfortable grip with lanyard hole
- Bonus nylon sheath



No. W014048

★**STOCK**

## TACTICAL MACHETE

- Sharp steel blade with saw back
- With black finish
- Comfortable grip with lanyard hole
- Bonus nylon sheath



## 10" MULTI FUNCTION KITCHEN SCISSORS

**NEW**

★**STOCK**

No. W015027

- Strong construction, corrosion resistant heavy duty stainless steel
- Bi-material ergonomic non-slip soft grip
- Sharp blades & slip-proof micro-serrated edge
- Multifunction & saving time-Ideal for cutting meat & chicken, crap, scaling fish, peeling, removing caps, and cracking nuts

Cut meat & vegetable



No. W015001

★**STOCK**

**CLASSIC 8" SCISSORS**



- Stainless steel blades
- Comfort-grip handle

No. W015002

★**STOCK**

**CLASSIC 8" SCISSORS**



- Stainless steel blades
- Comfort-grip handle

No. W015014

★**STOCK**

**HEAVY DUTY SCISSORS**



- Stainless steel blades
- Multi-purpose cutting
- Perfect for any task, the handle is molded to your hand for extra comfort

No. W015006

★STOCK

## RIGHT CUT AVIATION TIN SNIP

- Chrome-vanadium steel
- Serrated cutting edges prevent materials from slipping during use
- Ergonomic comfort grip handle



No. W015013

## RIGHT CUT AVIATION TIN SNIP

- Chrome-vanadium steel
- Serrated cutting edges prevent materials from slipping during use
- Ergonomic comfort grip handle



No. W015007

★STOCK

## LEFT CUT AVIATION TIN SNIP

- Chrome-vanadium steel
- Serrated cutting edges prevent materials from slipping during use
- Ergonomic comfort grip handle



No. W015011

## LEFT CUT AVIATION TIN SNIP

- Chrome-vanadium steel
- Serrated cutting edges prevent materials from slipping during use
- Ergonomic comfort grip handle



No. W015008

★STOCK

## STRAIGHT AVIATION TIN SNIP

- Chrome-vanadium steel
- Serrated cutting edges prevent materials from slipping during use
- Ergonomic comfort grip handle



No. W015012

## STRAIGHT AVIATION TIN SNIP

- Chrome-vanadium steel
- Serrated cutting edges prevent materials from slipping during use
- Ergonomic comfort grip handle





No. W017001

★**STOCK**

## 8" BOLT CUTTER

- 65Mn steel jaws
- Jaws hardened to HRC56-60 for longer life
- Strong handle with rubber grips



No. W017002

★**STOCK**

## 8" BOLT CUTTER

- 65Mn steel jaws
- Jaws hardened to HRC56-60 for longer life



No. W017009

★**STOCK**

## BOLT CUTTER

- Drop forged chrome-molybdenum steel jaws
- Ideal for cutting bolts, rods, rivets and chains
- Strong tubular handle with rubber grips



W017009	W017010	W017011
24"(600mm)	30"(760mm)	36"(900mm)

No. W017003

★**STOCK**

## BOLT CUTTER

- Drop forged chrome-molybdenum steel jaws
- Ideal for cutting bolts, rods, rivets and chains
- Strong tubular handle with rubber grips



W017003	W017004	W017005
12"(300mm)	14"(350mm)	18"(460mm)
W017006	W017007	W017008
24"(600mm)	30"(750mm)	36"(900mm)

No. W017012

★**STOCK**

## BOLT CUTTER

- Drop forged chrome-molybdenum steel jaws
- Ideal for cutting bolts, rods, rivets and chain
- Strong tubular handle with rubber grips



W017012	W017013
24"(600mm)	30"(750mm)



No. W016038

★**STOCK**

## MITRE BOX SAW

- Precision ground teeth, 12TPI
- Ergonomic comfort rubber grip handle



**12TPI**  
**Fine**



**1 2**  
**Double Ground Teeth**

W016038	W016039	W016040
12"	14"	16"

No. W016010

★**STOCK**

## WOOD HANDLE HAND SAW

- Precision double ground teeth, 7TPI
- Comfortable wood handle



W016010	W016011	W016012
14"	16"	18"
W016013	W016014	W016015
20"	22"	24"

No. W016017

★**STOCK**

## HAND SAW

- Punched teeth, 7TPI



W016017	W016018	W016019
14"	16"	18"
W016020	W016021	W016022
20"	22"	24"

No. W016024

## HAND SAW

- Triple ground teeth, 7TPI
- Soft grip handle



W016024	W016025	W016026
14"	16"	18"
W016027	W016028	W016029
20"	22"	24"

No. W016001

★**STOCK**

## 6"(152MM) WALLBOARD SAW

- Hardened and tempered 65Mn blade for strength and durability
- Super-sharp cross ground teeth for fast cutting in drywall, wood or plastic



W016001	W016002
6"	6"

No. W016003

★**STOCK**

## ALUMINUM FRAME MINI HACKSAW



- Aluminum alloy frame, ergonomic rubber handle
- For cutting in hard-to-reach places
- 10"(250mm) bi-metal blade

# WORKPRO®

## FASTENING TOOLS

SCREWDRIVER

HEX KEYS

HAND RIVETER

STAPLE GUN

CAULKING GUN



No. W021078

## PHILLIPS SCREWDRIVER

- Chrome-vanadium steel blade, chrome-plated
- Magnetic tip
- Ergonomic clear PVC grip handle for comfort



W021078	PH2X1-1/2"	★STOCK
W021079	PH0X3"	
W021080	PH0X4"	
W021081	PH0X6"	★STOCK
W021083	PH1X3"	★STOCK
W021084	PH1x4"	★STOCK
W021085	PH1x6"	★STOCK
W021089	PH2x4"	★STOCK
W021090	PH2x6"	★STOCK
W021094	PH3x6"	★STOCK
W021095	PH3x8"	

W021373	PH2x38mm	★STOCK
W021374	PH0x75mm	★STOCK
W021375	PH0x100mm	★STOCK
W021376	PH0x150mm	★STOCK
W021378	PH1x75mm	★STOCK
W021379	PH1x100mm	★STOCK
W021380	PH1x150mm	★STOCK
W021384	PH2x100mm	★STOCK
W021385	PH2x150mm	
W021389	PH3x150mm	
W021390	PH3x200mm	

No. W021103

## TORX SCREWDRIVER

W021103	T10x4"
W021104	T15x4"
W021105	T20x4"
W021106	T25x4"
W021107	T30x4"



- Chrome-vanadium steel blade, chrome-plated
- Magnetic tip
- Ergonomic clear PVC grip handle for comfort

No. W021108

## SQUARE SCREWDRIVER

W021108	T10x4"
W021109	T15x4"
W021110	T20x4"
W021111	T25x4"
W021403	S0x100mm
W021404	S1x100mm
W021405	S2x100mm
W021406	S3x100mm



- Chrome-vanadium steel blade, chrome-plated
- Magnetic tip
- Ergonomic clear PVC grip handle for comfort



No. W021112

## SLOTTED SCREWDRIVER



- Chrome-vanadium steel blade, chrome-plated
- Magnetic tip
- Ergonomic clear PVC grip handle for comfort

W021112	1/4"x1-1/2"	★STOCK
W021113	1/8"x3"	★STOCK
W021114	1/8"x4"	★STOCK
W021118	3-16"x3"	★STOCK
W021119	3/16"x4"	★STOCK
W021120	3/16"x6"	★STOCK
W021121	3/16"x8"	★STOCK
W021124	1/4"x4"	★STOCK
W021125	1/4"x6"	★STOCK
W021126	1/4"x8"	★STOCK
W021129	5/16"x6"	★STOCK
W021130	5/16"x8"	★STOCK
W021270	6x38mm	★STOCK
W021271	3x75mm	★STOCK
W021272	3x100mm	★STOCK
W021273	3x150mm	★STOCK
W021276	5x75mm	★STOCK
W021277	5x100mm	★STOCK
W021278	5x150mm	★STOCK
W021279	5x200mm	★STOCK
W021282	6x100mm	★STOCK
W021283	6x150mm	★STOCK
W021284	6x200mm	★STOCK
W021287	8x150mm	★STOCK
W021288	8x200mm	★STOCK

No. W021133

## PHILLIPS SCREWDRIVER



- Chrome-vanadium steel blade, chrome-plated
- Magnetic tip
- Ergonomic clear PVC grip handle for comfort

W021133	PH2x1-1/2"	★STOCK
W021134	PH0x3"	★STOCK
W021135	PH0x4"	★STOCK
W021138	PH1x3"	★STOCK
W021139	PH1x4"	★STOCK
W021140	PH1x6"	★STOCK
W021144	PH2x4"	★STOCK
W021145	PH2x6"	★STOCK
W021146	PH2x8"	★STOCK
W021149	PH3x6"	★STOCK
W021150	PH3x8"	★STOCK
W021291	PH2x38mm	★STOCK
W021292	PH0x75mm	★STOCK
W021293	PH0x100mm	★STOCK
W021294	PH0x150mm	★STOCK
W021296	PH1x75mm	★STOCK
W021297	PH1x100mm	★STOCK
W021298	PH1x150mm	★STOCK
W021302	PH2x100mm	★STOCK
W021303	PH2x150mm	★STOCK
W021304	PH2x200mm	★STOCK
W021307	PH3x150mm	★STOCK
W021308	PH3x200mm	★STOCK

No. W021001

## SLOTTED SCREWDRIVER



- Chrome-vanadium blade
- Black magnetic tip
- Ergonomic comfort grip handle

W021001	1/4"x1-1/2"	★STOCK
W021002	1/8"x3"	★STOCK
W021003	1/8"x4"	★STOCK
W021006	5/32"x4"	★STOCK
W021007	3/16"x3"	★STOCK
W021008	3/16"x4"	★STOCK
W021009	3/16"x6"	★STOCK
W021013	1/4"x4"	★STOCK
W021014	1/4"x6"	★STOCK
W021015	1/4"x8"	★STOCK
W021018	5/16"x6"	★STOCK
W021019	5/16"x8"	★STOCK
W021215	6x38mm	★STOCK
W021216	3x75mm	★STOCK
W021217	3x100mm	★STOCK
W021220	4x100mm	★STOCK
W021221	5x75mm	★STOCK
W021222	5x100mm	★STOCK
W021223	5x150mm	★STOCK
W021227	6x100mm	★STOCK
W021228	6x150mm	★STOCK
W021229	6x200mm	★STOCK
W021232	8x150mm	★STOCK
W021233	8x200mm	★STOCK

No. W021022

## PHILLIPS SCREWDRIVER



- Chrome-vanadium blade
- Black magnetic tip
- Ergonomic comfort grip handle

W021022	PH2x1-1/2"	★STOCK
W021023	PH0x3"	★STOCK
W021024	PH0x4"	★STOCK
W021027	PH1x3"	★STOCK
W021028	PH1x4"	★STOCK
W021029	PH1x6"	★STOCK
W021033	PH2x4"	★STOCK
W021034	PH2x6"	★STOCK
W021035	PH2x8"	★STOCK
W021038	PH3x6"	★STOCK
W021039	PH3x8"	★STOCK
W021236	PH2x38mm	★STOCK
W021237	PH0x75mm	★STOCK
W021238	PH0x100mm	★STOCK
W021241	PH1x75mm	★STOCK
W021242	PH1x100mm	★STOCK
W021243	PH1x150mm	★STOCK
W021247	PH2x100mm	★STOCK
W021248	PH2x150mm	★STOCK
W021249	PH2x200mm	★STOCK
W021252	PH3x150mm	★STOCK
W021253	PH3x200mm	★STOCK

No. W000807

★**STOCK**

## 18PC SCREWDRIVER SET WITH RACK

SAE



- Chrome-vanadium blade
- Black magnetic tips
- Ergonomic designed handle
- 10PC precision screwdrivers: PH0, PH00, PH000, 1/16", 3/32", 1/8", 5/64", T7, T8, T9
- 8PC screwdrivers: 1/4"x1-1/2", 1/4"x4", 3/16"x4", 5/16"x6", PH2x1-1/2", PH1x4", PH2x4", PH3x6"
- 1PC plastic rack

No. W000803

★**STOCK**

## 37PC SCREWDRIVER SET WITH RACK

SAE



- 8PC screwdrivers, SL5/16"x6", SL3/16"x3", SL1/4"x1-1/2", PH2x1-1/2", PH3x6", PH2x4", PZ2x4", PZ1x4"
- 8PC precision screwdrivers: SL5/64", SL3/32", SL1/8";PH00, PH0, T7, T8, T9
- 1PC magnetic bits holder
- 20PC bits:1/8",5/32",3/16",1/4"; PH0,PH1x2, PH2x2,PH3; T10,T15,T20,T25; S1,S2,S3; H3/32", H1/8", H3/16"

No. W000806

★**STOCK**

## 100PC SCREWDRIVER SET WITH RACK

SAE



- 8PC precision screwdrivers
- 1PC magnetic bits holder
- 22PC screwdrivers:1/8"x3", 5/32"x4", 3/16"x3", 3/16"x4", 3/16"x6", 1/4"x4", 1/4"x6", 5/16"x6"; PH0x3", PH0x4", PH1x3", PH1x4", PH1x6", PH2x4", PH2x6", PH3x6"; T10x4", T15x4", T20x4"; S0x4", S1x4", S2x4"
- 60PC bits
- 4" awl
- 2PC Z-bits: PH2&SL6, PH1&SL5
- 6PC socket nuts

No. W000832

★**STOCK**

## 45PC SCREWDRIVER SET WITH RACK

SAE



- Comfort non slip molded cushion grip
- Super convenient organizing holder included
- Magnetic tip helps aid in securing the screw tight places
- 7pc screwdriver:1/8"x3",3/16"x4",1/4"x5", 5/16"x6",PH0x3",PH1x4",PH2x5"
- 1pc screwdriver bits holder
- 10pc precision screwdriver:T5,T6,T7,T8,T9,T10,P H00,PH0,1/8",3/32"
- 16pc bits:1/8",5/32",3/16",1/4";PH0,PH1,PH2,PH, H3/16,H1/4,T10,T15,T20,T25,T27,T30,AD
- 1pc bit adaptor
- 9pc 1/4" sockets:3/16",1/4",9/32",3/8",7/16", 15/32",1/2"
- 1pc plastic rack

No. W021408

★STOCK

## DUAL-DRIVE T-HANDLE EXPRESS RATCHETING DRIVER SET



- Ergonomic handle with slip-resistant rubber grip
- Convenient forward/reverse thumb switch
- 2x faster than standard ratcheting
- 21PC bits with holder included:
- Slotted: 1.5, 2, 2.5, 3mm
- Phillips: PH000, PH00, PH0, PH1
- Torx: T5, T6, T7, T8, T9, T10
- Hex: H1.5, H2.0, H2.5
- Pozi: PZ00, PZ0, PZ1

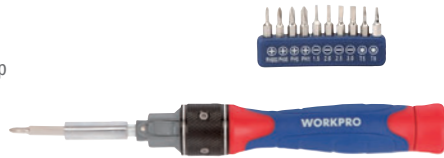


No. W021178

★STOCK

## 12PC DUAL-DRIVE PRECISION RATCHET SCREWDRIVER SET

- 2x faster than standard ratcheting
- Ergonomic handle with slip-resistant rubber grip
- Convenient thumb switch reverse gear drive
- 11PC CR-V bits:
- Slotted: 1.5mm, 2mm, 2.5mm, 3mm
- Phillips: PH000, PH00x2, PH0, PH1, T5, T6



No. W021177

★STOCK

## 38-IN-1 DUAL-DRIVE STUBBY RATCHET SCREWDRIVER

- CR-V bits
- 2x faster than standard ratcheting
- Ergonomic handle with slip-resistant rubber grip
- Convenient thumb switch reverse gear drive





## SCREWDRIVER BIT SET

No. W000848

- 20 x Screwdriver Bits, 25mm, Cr-V, Sandblast
- Plastic Bit holder

**NEW**

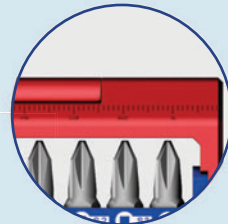
★**STOCK**

**Metric**

**20**  
PCS



- +
  - 
  - +
  - +
- Phillips Slotted Torx Pozi



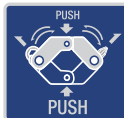
THE LEFT SIDE



THE RIGHT SIDE



Save space and could be easily carried around by storing in a blow molded case



PUSH



MAGNETIC



MAGNETIC

No. W000814

★STOCK

## 10-IN-1 RATCHETING QUICK-LOAD SCREWDRIVER SET



- Auto-locking, one handed bit loading locks virtually any 1/4" hex shank accessory
- Includes screwdriver blade holders.
- Rubberized, ergonomic grip gives higher torque output
- Contents include 5pc CR-V 4-1/2" double ended screwdriver shafts-SL4-5&SL6-8; PH1&PH3; PH2&SQ2; SQ1& SQ3; T10&T15



No. W000828

★STOCK

## 6-IN-1 TELESCOPIC QUICK-LOAD SCREWDRIVER SET



- 3PC S2 9" double ended screwdriver shafts PH2-1/4", PH1-3/16", S1-S2

No. W000802

★STOCK

## 6PC PRECISION SCREWDRIVER SET

SAE



- Chrome-vanadium blade
- Ergonomic comfort grip handle
- Size: Slotted: 5/64", 3/32", 1/8" Phillips: PH000, PH00, PH0

No. W000825

Metric

No. W000813

★STOCK

## 12-IN-1 QUICK-LOAD SCREWDRIVER SET



- Auto-locking, one handed bit loading locks virtually any 1/4" hex shank accessory
- Includes screwdriver blade holders.
- Rubberized, ergonomic grip gives higher torque output
- Contents include 6pc CR-V 4-1/2" double ended screwdriver shafts SL4-5&SL6-8; PH1&PH3; PH2&SQ2; SQ1& SQ3; T10&T15; T20&T25

No. W000815

★STOCK

## 14-IN-1 QUICK-LOAD PRECISION SCREWDRIVER SET



- Auto-locking, one handed bit loading locks virtually any 5/32" hex shank accessory
- Spinning cap allows for easier and quicker fastening; Rubberized, ergonomic grip gives higher torque output
- 7pc CR-V 3" double ended S/D shafts: PH000/ SL 1/16", PH00/ SL 5/64", PH0/ SL 3/32", PH1/ SL 1/8", T6/ T7, T8/T9, Hex 1/16"/ Hex 5/64

No. W022007

★STOCK

## 9PC FOLDING HEX KEY



- Light and strong aluminum structure handle
- Chrome-vanadium steel, hardened and tempered
- 5/64", 3/32", 7/64", 1/8", 9/64", 5/32", 3/16", 7/32", 1/4"

No. W022008

★STOCK

## 8PC FOLDING HEX KEY



- Light and strong aluminum structure handle
- Chrome-vanadium steel, hardened and tempered
- 1.5, 2, 2.5, 3, 4, 5, 6, 8mm

No. W022019

★STOCK

## 8PC FOLDING TORX KEY



- Light and strong aluminum structure handle
- Chrome-vanadium steel, hardened and tempered
- T8, T10, T15, T20, T25, T27, T30, T40

No. W022009

★STOCK

## 18PC SHORT ARM HEX KEY SET



- Chrome-vanadium steel, hardened and tempered
- 9PC metric hex size: 1.5, 2, 2.5, 3, 4, 5, 6, 8, 10mm
- 9PC torx hex size: T10, T15, T20, T25, T27, T30, T40, T45, T50

No. W000901

★STOCK

## 29PC ALUMINUM HANDLE HEX KEY SET



- Aluminum handles, chrome-vanadium steel keys
- 8PC folding metric hex keys
- 12PC folding screwdriver and socket set
- 9PC folding SAE hex keys

No. W022010

★STOCK

## 18PC SHORT ARM HEX KEY SET



- Chrome-vanadium steel, hardened and tempered
- 9PC Metric: 1.5, 2, 2.5, 3, 4, 5, 6, 8, 10mm
- 9PC SAE: 1/16", 5/64", 3/32", 1/8", 5/32", 3/16", 1/4", 5/16", 3/8"

No. W022011

★STOCK

## 18PC LONG ARM HEX KEY SET



- Chrome-vanadium steel, hardened and tempered
- 9PC Metric: 1.5, 2, 2.5, 3, 4, 5, 6, 8, 10mm
- 9PC SAE: 1/16", 5/64", 3/32", 1/8", 5/32", 3/16", 1/4", 5/16", 3/8"

No. W023004

★STOCK

## 10-1/2" ALUMINUM RIVETER



- Chrome-molybdenum jaws
- Aluminum alloy construction with ergonomic grip handle
- Spring loaded handle ejects rivet stem automatically
- Fits rivet size: 3/32", 1/8", 5/32" and 3/16"
- One wrench stored in handle

No. W023003

★STOCK

## 10" HAND RIVETER



- Chrome molybdenum jaws
- Steel construction with ergonomic grip handle
- Spring loaded handle ejects rivet stem automatically
- Fits rivet size: 3/32", 1/8", 5/32" and 3/16"
- One wrench stored in handle

No. W023001

★STOCK

## STAPLE GUN



- Precision engineered structure provides a trouble-free performance
- Long lasting chrome-plated finish
- Easy push lockdown handle
- Solid steel mechanism with quick jam release

No. W023002

★STOCK

## 3-IN-1 STAPLE GUN SET



- 1x staple gun
- 500PC 8 x 1.2 x 11.3 staples
- 500PC 12mm staples
- 500PC 14mm nails
- 1 x handy storage case

No. W024001

★STOCK

## CAULKING GUN



- All metal construction
- Comfortable pistol grip

No. W024002

★STOCK

## CAULKING GUN WITH RATCHET



- Ratchet rotating construction
- Tip cutter function
- With seal puncture tool



## 2PC QUICK-RELEASE GROOVE JOINT PLIERS

No. W001309



Quick-release button for faster adjustments, press and slide button to adjust the lower jaw

- Press and slide button quickly to adjust the lower jaw
- All purpose jaw grips on round, flat, square and hex shapes
- More groove positions provide the optimum hand location for a better grip on the work piece
- Material: chrome-vanadium

W001309	10" , 8"	★STOCK
W001389	10"	★STOCK
W001388	8"	★STOCK

No. W031140

## 10" V-JAW SELF-ADJUSTING GROOVE JOINT PLIERS

**NEW**

★STOCK

- Self-Adjusting Jaws can grip various bolt head shapes and sizes
- Ergonomically designed rubber handles provide a comfortable grip
- Fully automatic for true one-handed use
- Max. jaw opening: 1-11/16"(43mm)
- 2X Gripping power and 50% labor-saving



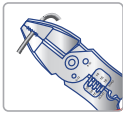
No. W031139

**NEW**

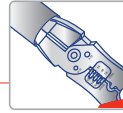
★**STOCK**

## 8" ALL PURPOSE LINESMAN PLIERS

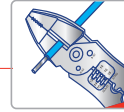
- The Multi-purpose built let you complete more tasks with one tool.
- High leverage design



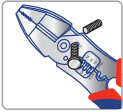
Linesman Pliers



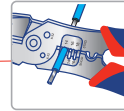
Finish Reaming



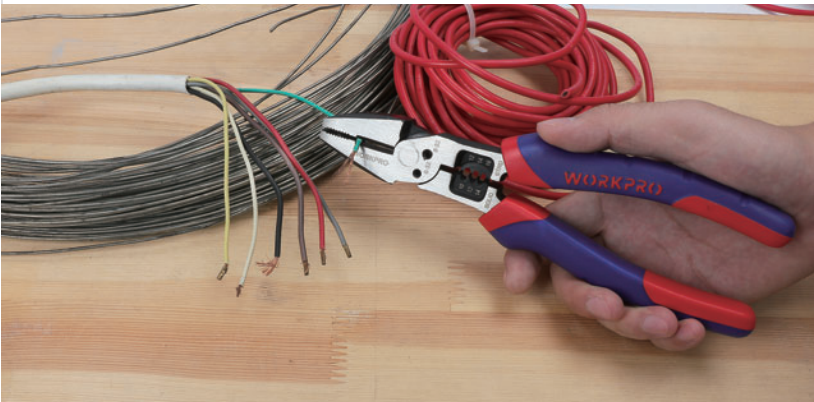
Wire and Cable Cutter



Bolt Cutter 6/32 8/32



Wire Stripper  
Solid AWG 10 12 14  
(5.2 3.3 2.0mm<sup>2</sup>)  
Stranded AWG 12 14 16  
(5.2 3.3 2.0mm<sup>2</sup>)



No. W031001

★STOCK

## 6"(160MM) LONG NOSE PLIERS



- Drop forged carbon steel with Ni-Fe coating for durability
- Bi-material comfort grip handle

W031002 8"(200mm)

No. W031003

★STOCK

## 6"(160MM) DIAGONAL PLIERS



- Drop forged carbon steel with Ni-Fe coating for durability
- Bi-material comfort grip handle

No. W031004

★STOCK

## 7"(180MM) HEAVY DUTY DIAGONAL PLIERS



- Drop forged carbon steel with Ni-Fe coating for durability
- Bi-material comfort grip handle

No. W031005

★STOCK

## 6"(160MM) LINESMAN PLIERS



- Drop forged carbon steel with Ni-Fe coating for durability
- Bi-material comfort grip handle

W031091 7"(180mm)

W031006 8"(200mm)

No. W031010

★STOCK

## 6"(160MM) END CUTTING PLIERS



- Drop forged carbon steel with Ni-Fe coating for durability
- Bi-material comfort grip handle

No. W031092

★STOCK

## 9"(230MM) LINESMAN PLIERS



- Drop forged carbon steel with Ni-Fe coating for durability
- Bi-material comfort grip handle

No. W031011

★STOCK

## 6"(160MM) STRIPPER PLIERS



- Drop forged carbon steel with Ni-Fe coating for durability
- Bi-material comfort grip handle

No. W031012

★STOCK

## 6"(160MM) FLAT NOSE PLIERS



- Drop forged carbon steel with Ni-Fe coating for durability
- Bi-material comfort grip handle

No. W031009

★STOCK

## 6"(160MM) BENT NOSE PLIERS



- Drop forged carbon steel with Ni-Fe coating for durability
- Bi-material comfort grip handle

No. W031007

★STOCK

## 6"(160MM) SLIP JOINT PLIERS



- Drop forged carbon steel with Ni-Fe coating for durability
- Bi-material comfort grip handle

W031008 8"(200mm)

No. W031013

★STOCK

## 8"(200MM) GROOVE JOINT PLIERS



- Drop forged carbon steel with Ni-Fe coating for durability
- Bi-material comfort grip handle

W031014 10"(250mm)

W031015 12"(300mm)

No. W031020

★STOCK

## MINI END CUTTING PLIERS



- Drop forged carbon steel with Ni-Fe coating for durability
- Bi-material comfort grip handle

No. W031041

★**STOCK**

## MINI LONG NOSE PLIERS



- Drop forged steel for durability
- Heat treated and fully polished
- Double dipped grip handle for comfort
- Material: carbon steel

No. W031042

★**STOCK**

## MINI DIAGONAL PLIERS



- Drop forged steel for durability
- Heat treated and fully polished
- Double dipped grip handle for comfort
- Material: carbon steel

No. W031043

★**STOCK**

## MINI LINESMAN PLIERS



- Drop forged steel for durability
- Heat treated and fully polished
- Double dipped grip handle for comfort
- Material: carbon steel

No. W031044

★**STOCK**

## MINI END CUTTING PLIERS



- Drop forged steel for durability
- Heat treated and fully polished
- Double dipped grip handle for comfort
- Material: carbon steel

No. W031045

★**STOCK**

## MINI NEEDLE NOSE PLIERS



- Drop forged steel for durability
- Heat treated and fully polished
- Double dipped grip handle for comfort
- Material: carbon steel

No. W031046

★**STOCK**

## MINI BENT NOSE PLIERS



- Drop forged steel for durability
- Heat treated and fully polished
- Double dipped grip handle for comfort
- Material: carbon steel

No. W001306

★**STOCK**

## 7PC PLIERS SET



- Drop forged steel for durability
- Heat treated and fully polished
- Double dipped grip handle for comfort
- Material: carbon steel
- Contains: 8" groove joint pliers, 6" long nose pliers, 6" slip joint pliers, 4-1/2" long nose pliers, 6" diagonal pliers, 7" linesman pliers, 8" slip joint pliers

No. W001307

★**STOCK**

## 5PC PLIERS SET



- Drop forged steel for durability
- Heat treated and fully polished
- Double dipped grip handle for comfort
- Material: carbon steel
- Contains: 10" Slip Joint pliers, 8" linesman pliers, 8" long nose pliers, 6" diagonal pliers, 10" groove joint pliers

No. W031051

★STOCK

## 6"(160MM) LONG NOSE PLIERS



- Drop forged carbon steel, fully polished for durability
- Ergonomic comfort grip handle

W031052    8"(200 mm)

No. W031055

★STOCK

## 6"(160MM) LINESMAN PLIERS



- Drop forged carbon steel, fully polished for durability
- Ergonomic comfort grip handle

W031056    8"(200 mm)

No. W031053

★STOCK

## 6"(160MM) DIAGONAL PLIERS



- Drop forged carbon steel, fully polished for durability
- Ergonomic comfort grip handle

W031054    7"(180 mm)

No. W031062

★STOCK

## 6"(160MM) FLAT NOSE PLIERS



- Drop forged carbon steel, fully polished for durability
- Ergonomic comfort grip handle

No. W031060

★STOCK

## 6"(160MM) END CUTTING PLIERS



- Drop forged carbon steel, fully polished for durability
- Ergonomic comfort grip handle

No. W031061

★STOCK

## 6"(160MM) STRIPPER PLIERS



- Drop forged carbon steel, fully polished for durability
- Ergonomic comfort grip handle

No. W031059

★STOCK

## 6"(160MM) BENT NOSE PLIERS



- Drop forged carbon steel with full polished for durability
- Ergonomic comfort grip handle

No. W031047

★STOCK

## CIRCLIP PLIERS EXTERNAL STRAIGHT



W031047 W031048 W031049 W031050

- Chrome-vanadium steel, fully polished, black finish
- Dipped grip handle

No. W031077

★STOCK

## 6"(160MM) C-CLAMP LOCKING PLIERS

W031078    11"(280mm)  
W031079    18"(450mm)



- Chrome-vanadium steel jaw for maximum durability
- Quick, easy locking and release action
- Guarded release helps keep work fast and safe
- Turn screw to adjust holding pressure and fit work

No. W031080

★STOCK

## 6"(160MM) C-CLAMP LOCKING PLIERS WITH PAD

W031081    11"(280mm)  
W031082    18"(450mm)



- Chrome-vanadium steel jaw for maximum durability
- Quick, easy locking and release action
- Guarded release helps keep work fast and safe
- Turn screw to adjust holding pressure and fit work



No. W031084

## 10"(250MM) SHEET LOCKING PLIERS



W031083	8"(200mm)
W031084	10"(250mm)

★STOCK

- Carbon steel jaw for maximum toughness and durability
- Quick, easy locking and release action
- Guarded release helps keep work fast and safe
- Turn screw to adjust holding pressure and fit work

No. W001300

★STOCK

## 4PC LOCKING PLIERS SET



- 5" curved jaw locking pliers
- 6-1/2" long nose jaw locking pliers
- 7" curved jaw locking pliers
- 10" curved jaw locking pliers
- Material: carbon steel

No. W001316

★STOCK

## 5PC LOCKING PLIERS SET



- Chrome-vanadium steel jaw for maximum durability
- Quick, easy locking and release action
- 5" curved jaw locking pliers
- 7" curved jaw locking pliers
- 10" curved jaw locking pliers
- 6-1/2" long nose locking pliers
- 9" long nose locking pliers

No. W031101

★STOCK

## 5"(130MM) CURVED JAW LOCKING PLIERS



- Chrome-vanadium steel jaw for maximum durability
- Quick, easy locking and release action
- Guarded release helps keep work fast and safe
- Turn screw to adjust holding pressure and fit work

W031094	7"(180mm)
W031095	10"(250mm)

No. W031093

★STOCK

## 6-1/2"(165MM)LONG NOSE STRAIGHT JAW LOCKING PLIERS



- Chrome-vanadium steel jaw for maximum durability
- Quick, easy locking and release action
- Guarded release helps keep work fast and safe
- Turn screw to adjust holding pressure and fit work

W031102	9"(230mm)
---------	-----------

No. W001310

## 3PC LOCKING PLIERS SET

- Chrome-vanadium steel jaw for maximum durability
- Quick, easy locking and release action
- Guarded release helps keep work fast and safe
- Turn screw to adjust holding pressure and fit work
- 10"(255mm) curved jaw locking pliers
- 7"(180mm) curved jaw locking pliers
- 6-1/2"(165mm) long nose straight jaw locking pliers



★STOCK

No. W032001

★**STOCK**

## SPRING CLAMP



- Soft durable pads to protect fine finishes
- Ergonomic handle for comfortable use
- Reinforced nylon construction for strength

W032001	3/4"(19mm)
W032002	1"(25mm)
W032003	2"(51mm)
W032004	3"(76mm)

No. W032005

★**STOCK**

## STEEL SPRING CLAMP



- Non-marking PVC coating tips and handles to protect delicate finish with non-slip holding power
- Zinc-coated steel with non-corroding strong wound-steel spring for firm grip

W032005	3/4"(19mm)
W032006	1"(25mm)
W032007	2"(51mm)
W032008	3"(76mm)

No. W032009

★**STOCK**

## SPRING CLAMP



- Pivoting jaw nose
- Ergonomic handle for comfortable use
- Reinforced nylon construction for strength

W032009	3/4"(19mm)
W032010	1"(25mm)
W032011	2"(51mm)
W032012	3"(76mm)

No. W032013

★**STOCK**

## ALUMINUM SPRING CLAMP



- 3/4" jaw opening
- Aluminum frame and body
- With swivel pads

W032013	3/4"(19mm)
---------	------------

No. W032014

★**STOCK**

## ALUMINUM SPRING CLAMP



- Aluminum frame and body
- With swivel pads
- Rubberized handle for comfortable use

W032014	1-1/2"(40mm)
W032015	2"(51mm)

No. W031063

★**STOCK**

## PUNCH PLIERS



- 6 punch sizes: 2.0, 2.5, 3.0, 3.5, 4.0, 4.5mm
- Ergonomic large handle

No. W032045

★**STOCK**

## QUICK-RELEASE C-CLAMP

- Heavy duty malleable iron and steel construction
- Roll-formed screw threads ensure smooth operation and durability
- Quick-release mechanism
- Oversized T-handle for extra torque



W032045	3"
W032046	4"
W032047	6"

No. W032016

★**STOCK**

## C-CLAMP

- Malleable steel frame
- Black finish screw
- Swivel pad
- Ideal for most woodworking and metalworking applications



W032016	1"	W032019	4"
W032017	2"	W032020	6"
W032018	3"	W032021	8"

**WORKPRO®**

# STRIKING TOOLS



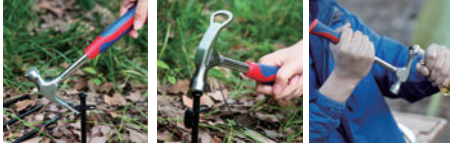
HAMMER & AXE

PRY BAR

CHISEL

No. W041087

## 80Z WEEKEND HAMMER



★STOCK

- 8 OZ Multi-purpose Hammer with Bottle Opener for Week-end Outdoor Camping Tent
- Unique bottle opener included
- Strong tubular steel shaft handle, comfortable rubberized anti-vibration grip
- Drop forged heat treated 8 ounce steel head
- Ideal for party time

No. W041021

★STOCK

## CURVED CLAW HAMMER WITH HICKORY HANDLE



- Forged high-carbon steel head
- Fully heat treated & polished face
- Textured grip hickory handle

W041021	8oz
W041022	12oz
W041023	16oz
W041024	20oz

No. W041027

★STOCK

## RIP CLAW HAMMER WITH HICKORY HANDLE



- Forged high-carbon steel head
- Fully heat treated & polished face
- Textured grip hickory handle

W041027	16oz
W041028	20oz

No. W041029

★STOCK

## BALL-PEIN HAMMER WITH HICKORY HANDLE



- Forged high-carbon steel head
- Fully heat treated & polished face
- Textured grip hickory handle

W041029	16oz
W041030	24oz

No. W041031

★STOCK

## 70Z MAGNETIC HAMMER WITH HICKORY HANDLE



- Forged high-carbon steel head
- Fully heat treated & polished face
- Textured grip hickory handle

No. W041020

★STOCK

## 160Z RUBBER MALLET WITH HARDWOOD HANDLE



- Solid rubber head
- Comfortable hickory handle
- Non-rebounding
- Non-spark

No. W041032

★STOCK

## ONE-PIECE CLAW HAMMER



- Carbon steel, heat treated
- Drop forged in one-piece, fully polished
- Anti-vibration rubber grip handle

W041032	16oz
W041033	20oz
W041035	24oz

No. W041060

★**STOCK**

## RIP CLAW HAMMER WITH FIBERGLASS HANDLE



- Drop forged carbon steel
- Fully heat treated & polished face
- Fiberglass handle
- Comfortable, secure grip

W041060	16oz
W041061	20oz
W041062	24oz

No. W041038

★**STOCK**

## CURVED CLAW HAMMER WITH FIBERGLASS HANDLE



- Drop forged carbon steel
- Fully heat treated & polished face
- Fiberglass handle
- Comfortable, secure grip

W041038	16oz
W041039	20oz

No. W041046

★**STOCK**

## BALL-PEIN HAMMER WITH FIBERGLASS HANDLE



- Forged carbon steel head
- Fiberglass handle
- Textured rubberized grip for comfort

W041046	16oz
W041047	24oz

No. W041041

★**STOCK**

## STONE HAMMER WITH FIBERGLASS HANDLE



- Forged carbon steel head
- Fiberglass handle
- Textured rubberized grip for comfort

W041041	2.5lb
W041042	3lb

No. W041049

★**STOCK**

## DEAD BLOW HAMMER



- Whole body made by PVC material
- Non-marring plastic faces
- Non-rebounding
- Non-spark
- Shot-filled head

W041049	1lb
W041050	1.5lb
W041051	2.5lb
W041052	3lb

No. W041053

★**STOCK**

## 35MM DOUBLE-FACED DEAD BLOW HAMMER



- Replaceable polyurethane faces
- Comfortable hickory handle
- Non-rebounding
- Non-spark

No. W045001

★**STOCK**

## UTILITY BAR



- Slim profile for working in awkward areas
- Integrated nail pulling jaws

W045001	13"
W045002	21"



**WORKPRO®**

# FINISHING TOOLS

FILE

BLOCK PLANE

BRUSH



No. W051026

★STOCK

## ROUND RASP FILE



- Aggressive teeth remove wood fast for any wood shaping need
- Comfortable grip handle
- Ideal for wood carvers

W051026	8"
---------	----

W051027	10"
---------	-----

No. W051028

★STOCK

## FLAT ROUND RASP FILE



- Aggressive teeth remove wood fast for any wood shaping need
- Comfortable grip handle
- Ideal for wood carvers

W051028	8"
---------	----

W051029	10"
---------	-----

No. W002100

★STOCK

## 5PC DIAMOND NEEDLE FILE SET



- Fine diamond grit
- Perfect for machinists, gunsmiths, jewelers and hobbyists
- Size: 3x140mm, 150 grit
- Dipped grip handle

No. W052001

★STOCK

## CAST IRON BLOCK PLANE



- Front handle for extra control
- Hardened, tempered 1-9/16" width cutter for longer life
- Cast iron body for strength
- Machine polished to resist rust

No. W052002

★STOCK

## ADJUSTABLE BLOCK PLANE



- Low angle blade for precision work
- Hardened and tempered 1-5/8" width cutter for longer life
- Cast iron body for strength
- Machine polished to resist rust

No. W052003

★STOCK

## ADJUSTABLE BLOCK PLANE



- Dual wood handles for precision work
- Hardened, tempered 2" width cutter for longer life
- Cast iron, machine polished body for strength and to resist rust

No. W053001

★STOCK

## STEEL BRUSH



W053001(3x17)



W053002(4x16)

- Carbon steel
- Plastic handle with scraper

No. W053003

★STOCK

## STEEL BRUSH



W053003(9x20)



W053004(6x19)

- Carbon steel
- Plastic handle

## PLASTIC TAPE MEASURE WITH RUBBER COVER

★STOCK

- Bi-material tape measure
- Self-locking mechanism allows to be extended smoothly
- Easy-to-use thumb button
- Push button retrieval
- Ergonomically designed case



W061005	10FT.(3m)
W061006	16FT.(5m)
W061007	25FT.(7.5m)

No. W061001

★STOCK

### PLASTIC TAPE MEASURE



- High-impact ABS case
- Heat treated spring provides long life and smooth blade rewind
- Strong belt clip

W061001	2m
W061002	10FT.(3m)
W061003	16FT.(5m)
W061004	25FT.(7.5m)

No. W061011

★STOCK

### CHROME PLATING TAPE MEASURE



- Strong durable blade
- Classic chrome plating with impact resistant case
- Easy belt clip

W061011	10FT.(3m)
W061012	16FT.(5m)
W061013	25FT.(7.5m)

No. W064004

★STOCK

## 8" SLIDING T-BEVEL



- High-impact plastic handle with 4-way view vial
- Stainless steel blade
- Cylinder level vial

No. W064003

★STOCK

## 8" TRY SQUARE



- Etched stainless steel blade
- Brass bound hardwood handle
- 1/8", 1/16" graduations

No. W064005

★STOCK

## 9" SLIDING T-BEVEL WITH WOODEN HANDLE



- Hardwood handle
- Etched stainless steel blade
- 1/8", 1/16", 1/32" and mm graduations

No. W064006

★STOCK

## 7" SQUARE LAYOUT TOOL



- Precision machined die-cast aluminum body
- Etched SAE & metric marking

No. W064007

SAE

## 8x12" STEEL CARPENTER SQUARE

★STOCK



No. W064010  
400x600mm

Metric

- High-grade steel body with powder coating
- SAE & metric markings

No. W065008

★STOCK

## 12x24" STEEL RAFTER SQUARE



- High-quality hardened steel for durability and long life
- Embossed graduations for easy reading on face and back
- Reverse reading scale makes measuring more efficient
- Treated with protective finish for rust-resistance

No. W065001

★STOCK

## STAINLESS STEEL RULER



- Stainless steel
- Permanently etched graduation

W065001	12"
W065002	24"
W065003	48"

No. W065004

★STOCK

## STRAIGHT EDGE ALUMINUM RULER(ANODISED)



- Stainless steel
- Permanently etched graduation

W065004	24"
W065005	48"

**NEW**

★**STOCK**

No. W062034

## 9" TORPEDO LEVEL



- Special angle design for picture hanging
- Durable acrylic vials read plumb, level, 45°
- Top read window for convenience
- Highly visible vials with magnetic base

No. W062009

★**STOCK**

## MAGNETIC ALUMINUM I-BEAM LEVEL

- Structural aluminum frame for maximum durability
- Rubber end caps protect against shock when dropped or bumped
- Impact-resistant solid block vials
- Comfort grips for ease of handling
- Rare-earth magnets base



W062009	24"
W062010	48"

No. W062001

★**STOCK**

## 9" PLASTIC TORPEDO LEVEL



- Acrylic vials read plumb, level, 45°
- Top read window for convenience
- Rubber end caps for shock-resistant
- Highly visible vials with magnetic base

No. W062002

★**STOCK**

## 9" ALUMINUM FRAME TORPEDO LEVEL



- Acrylic vials read plumb, level, 45°
- Top read window for convenience
- V-groove working edge fits on pipe or conduit
- Highly visible vials with magnetic base

No. W062003

★**STOCK**

## 9" ALUMINUM FRAME TORPEDO LEVEL



- Magnetic v-groove base
- Visible vials read plumb, level, 45°
- Top read windows for convenience
- Heavy duty aluminum frame with magnetic strip
- Rubber end caps for shock-resistant

No. W062004

★**STOCK**

## 9" ALUMINUM FRAME TORPEDO LEVEL



- Highly visible vials read plumb, level, 45°
- Top read window for convenience
- Heavy duty aluminum frame
- Strong holding magnetic edge

No. W062005

★**STOCK**

## 24" HEAVY DUTY DIE-CAST ALUMINUM LEVEL



- With strong magnet
- Accuracy: 1 mm/m
- Lightweight aluminum body, spray-paint

No. W062006

★**STOCK**

## TOP-READ ALUMINUM LEVEL



- High grade aluminum frame
- Shock resistant end caps
- Acrylic windows protect vials from breakage



No. W066003

★STOCK

## 6" (150MM) ELECTRONIC CALIPER WITH DIGITAL DISPLAY



- Manual power ON/OFF
- Zero setting at any position
- Stainless steel body
- LCD display for quick & easy measurement
- Metric/SAE conversion button for accurate size readings, liner accuracy:0.02mm/0.001"
- Depth rod for greater accuracy
- Thumb wheel adjustments
- Inner/outer measuring
- Measuring range:0-150mm/0-6"
- 2PC LR44 button cell batteries included( one installed & one extra)

No. W066006

★STOCK

## 6" (150MM) ELECTRONIC CALIPER WITH DIGITAL DISPLAY



- 150mm Electronic Caliper with Digital Display(METRIC)
- Manual power ON/OFF
- Zero setting at any position
- Stainless steel body
- LCD display for quick& easy measurement
- Metric/inch conversion button for accurate size readings, liner accuracy:0.02mm/0.001"
- Depth rod for greater accuracy
- Thumb-wheel adjustments
- Inner/outer measuring
- Measuring range:0-150mm/0-6"
- Button cell batteries included

No. W066002

★STOCK

## 6" (150MM) VERNIER CALIPER



- High grade lightweight anodized aluminum alloy body
- Highly visible graduations in 1/8", 1/16"

No. W066005

★STOCK

## 6" (150MM) VERNIER CALIPER



- 150mm Vernier Caliper
- carbon steel

No. W074001



## 1/4" DR. STANDARD SOCKET, 6PT



- Chrome-vanadium steel
- Chrome plated, mirror polished

W074001	5/32"
W074002	3/16"
W074003	7/32"
W074004	1/4"
W074005	9/32"
W074006	5/16"
W074007	11/32"
W074008	3/8"
W074009	7/16"
W074010	1/2"

No. W074022



## 1/4" DR. DEEP SOCKET, 6PT



- Chrome-vanadium steel
- Chrome plated, mirror polished

W074022	3/16"	★STOCK
W074023	7/32"	★STOCK
W074024	1/4"	★STOCK
W074025	9/32"	★STOCK
W074026	5/16"	★STOCK
W074027	11/32"	★STOCK
W074028	3/8"	★STOCK
W074029	7/16"	★STOCK
W074030	1/2"	★STOCK

No. W074011



## 1/4" DR. STANDARD SOCKET, 6PT



- Chrome-vanadium steel
- Chrome plated, mirror polished

W074011	4mm	★STOCK
W074012	5mm	★STOCK
W074013	6mm	★STOCK
W074014	7mm	★STOCK
W074015	8mm	★STOCK
W074016	9mm	★STOCK
W074017	10mm	★STOCK
W074018	11mm	★STOCK
W074019	12mm	★STOCK
W074020	13mm	★STOCK
W074021	14mm	★STOCK

No. W074031



## 1/4" DR. DEEP SOCKET, 6PT



- Chrome-vanadium steel
- Chrome plated, mirror polished

W074031	4mm	★STOCK
W074032	5mm	★STOCK
W074033	6mm	★STOCK
W074034	7mm	★STOCK
W074035	8mm	★STOCK
W074036	9mm	★STOCK
W074037	10mm	★STOCK
W074038	11mm	★STOCK
W074039	12mm	★STOCK
W074040	13mm	★STOCK
W074041	14mm	★STOCK

No. W074092

## 3/8" DR. DEEP SOCKET, 6PT



SAE



- Chrome-vanadium steel
- Chrome plated, mirror polished

W074092	5/16"	★STOCK
W074093	3/8"	★STOCK
W074094	7/16"	★STOCK
W074095	1/2"	★STOCK
W074096	9/16"	★STOCK
W074097	5/8"	★STOCK
W074098	11/16"	★STOCK
W074099	3/4"	★STOCK
W074100	13/16"	★STOCK
W074101	7/8"	★STOCK

No. W074119

## 3/8" DR. STANDARD SOCKET, 12PT



SAE



- Chrome-vanadium steel
- Chrome plated, mirror polished

W074119	1/4"	★STOCK
W074120	5/16"	★STOCK
W074121	3/8"	★STOCK
W074122	7/16"	★STOCK
W074123	1/2"	★STOCK
W074124	9/16"	★STOCK
W074125	5/8"	★STOCK
W074126	11/16"	★STOCK
W074127	3/4"	★STOCK
W074128	13/16"	★STOCK
W074129	7/8"	★STOCK

No. W074102

## 3/8" DR. DEEP SOCKET, 6PT



Metric



- Chrome-vanadium steel
- Chrome plated, mirror polished

W074102	8mm	★STOCK
W074103	9mm	★STOCK
W074104	10mm	★STOCK
W074105	11mm	★STOCK
W074106	12mm	★STOCK
W074107	13mm	★STOCK
W074108	14mm	★STOCK
W074109	15mm	★STOCK
W074110	16mm	★STOCK
W074111	17mm	★STOCK
W074112	18mm	★STOCK
W074113	19mm	★STOCK
W074114	20mm	★STOCK
W074115	21mm	★STOCK
W074116	22mm	★STOCK
W074117	23mm	★STOCK
W074118	24mm	★STOCK

No. W074130

## 3/8" DR. STANDARD SOCKET, 12PT



Metric



- Chrome-vanadium steel
- Chrome plated, mirror polished

W074130	6mm	★STOCK
W074131	7mm	★STOCK
W074132	8mm	★STOCK
W074133	9mm	★STOCK
W074134	10mm	★STOCK
W074135	11mm	★STOCK
W074136	12mm	★STOCK
W074137	13mm	★STOCK
W074138	14mm	★STOCK
W074139	15mm	★STOCK
W074140	16mm	★STOCK
W074141	17mm	★STOCK
W074142	18mm	★STOCK
W074143	19mm	★STOCK
W074144	20mm	★STOCK
W074145	21mm	★STOCK
W074146	22mm	★STOCK
W074148	24mm	★STOCK

No. W074239

SAE

## 1/2" DR. STANDARD SOCKET, 12PT



- Chrome-vanadium steel
- Chrome plated, mirror polished

W074239	5/16"	★STOCK
W074240	3/8"	★STOCK
W074241	7/16"	★STOCK
W074242	1/2"	★STOCK
W074243	9/16"	★STOCK
W074244	19/32"	★STOCK
W074245	5/8"	★STOCK
W074246	11/16"	★STOCK
W074247	3/4"	★STOCK
W074248	25/32"	★STOCK
W074249	13/16"	★STOCK
W074250	7/8"	★STOCK
W074251	15/16"	★STOCK
W074253	1"	★STOCK
W074254	1-1/16"	★STOCK
W074255	1-1/8"	★STOCK
W074256	1-3/16"	★STOCK
W074257	1-1/4"	★STOCK

No. W074258

Metric

## 1/2" DR. STANDARD SOCKET, 12PT



- Chrome-vanadium steel
- Chrome plated, mirror polished

W074258	8mm	★STOCK
W074259	9mm	★STOCK
W074260	10mm	★STOCK
W074261	11mm	★STOCK
W074262	12mm	★STOCK
W074263	13mm	★STOCK
W074264	14mm	★STOCK
W074265	15mm	★STOCK
W074266	16mm	★STOCK
W074267	17mm	★STOCK
W074268	18mm	★STOCK
W074269	19mm	★STOCK
W074270	20mm	★STOCK
W074271	21mm	★STOCK
W074272	22mm	★STOCK
W074273	23mm	★STOCK
W074274	24mm	★STOCK
W074275	25mm	★STOCK
W074276	26mm	★STOCK
W074277	27mm	★STOCK
W074278	28mm	★STOCK
W074279	29mm	★STOCK
W074280	30mm	★STOCK
W074282	32mm	★STOCK

No. W074195

SAE

## 1/2" DR. DEEP SOCKET, 6PT



- Chrome-vanadium steel
- Chrome plated, mirror polished

W074195	5/16"	
W074196	3/8"	
W074197	7/16"	★STOCK
W074198	1/2"	★STOCK
W074199	9/16"	★STOCK

W074201	5/8"	★STOCK
W074202	11/16"	★STOCK
W074203	3/4"	★STOCK
W074204	25/32"	
W074205	13/16"	★STOCK
W074206	7/8"	★STOCK
W074207	15/16"	★STOCK
W074209	1"	★STOCK
W074210	1-1/16"	★STOCK
W074211	1-1/8"	★STOCK
W074212	1-3/16"	★STOCK
W074213	1-1/4"	★STOCK

No. W074304

★**STOCK**

## EXTENSION BAR

**CR-V**



- Chrome-vanadium steel
- Chrome plated, mirror polished

W074304	1/4"x2"
W074305	1/4"x3"
W074306	1/4"x4"
W074307	1/4"x6"
W074308	3/8"x3"
W074309	3/8"x5"

W074310	3/8"x6"
W074311	3/8"x10"
W074312	1/2"x3"
W074313	1/2"x5"
W074314	1/2"x10"

No. W071014

★**STOCK**

## RATCHET HANDLE



- Carbon steel, chrome plated
- Comfortable grip handle
- Forward/reverse ratchet

W071014	1/4"
W071010	3/8"
W071015	1/2"

No. W071016

★**STOCK**

## QUICK-RELEASE RATCHET HANDLE



**CR-V**

- Chrome-vanadium steel, full polished
- Forward/reverse ratchet
- Thumb operated reverse-switch mechanism
- Quick-release mechanism

W071016	1/4"
W071017	3/8"
W071018	1/2"

No. W071001

★**STOCK**

## QUICK-RELEASE RATCHET HANDLE

**CR-V**



- 45 teeth gear
- Chrome-vanadium steel
- Ergonomic rubberized grip
- Chrome-plated, mirror polished

W071001	1/4"
W071002	3/8"
W071003	1/2"

No. W071004

★**STOCK**

## QUICK-RELEASE PEAR-HEAD RATCHET HANDLE

**CR-V**



- 72 teeth gear
- Chrome-vanadium steel
- Ergonomic rubber grip
- Chrome plated, mirror polished

W071004	1/4"
W071005	3/8"
W071006	1/2"

No. W071007

★**STOCK**

## QUICK-RELEASE PEAR-HEAD RATCHET HANDLE

**CR-V**

- 72 teeth gear
- Chrome-vanadium steel
- Ergonomic rubberized grip
- Chrome plated, mirror polished

W071007	1/4"
W071008	3/8"
W071009	1/2"





No. W073150

## COMBINATION WRENCH (TYPE I)

**CR-V**

- Chrome-vanadium steel
- Chrome plated, mirror polished



W073150	26mm	★STOCK
W073151	27mm	★STOCK
W073152	28mm	★STOCK
W073153	29mm	★STOCK
W073154	30mm	★STOCK
W073155	32mm	★STOCK
W073234	1/4"	
W073235	5/16"	
W073236	3/8"	
W073237	7/16"	
W073238	1/2"	

W073239	9/16"	
W073240	5/8"	
W073241	11/16"	
W073242	3/4"	
W073243	13/16"	
W073244	7/8"	
W073245	15/16"	
W073246	1"	
W073247	1-1/16"	
W073248	1-1/8"	
W073249	1-1/4"	

No. W073156

## COMBINATION WRENCH (TYPE II)

**CR-V**

- Chrome-vanadium steel
- Chrome plated, mirror polished



W073156	6mm	★STOCK
W073157	7mm	★STOCK
W073158	8mm	★STOCK
W073159	9mm	★STOCK
W073160	10mm	★STOCK
W073161	11mm	★STOCK
W073162	12mm	★STOCK
W073163	13mm	★STOCK
W073164	14mm	★STOCK
W073165	15mm	★STOCK
W073166	16mm	★STOCK
W073167	17mm	★STOCK
W073168	18mm	★STOCK
W073169	19mm	
W073170	20mm	
W073171	21mm	
W073172	22mm	★STOCK
W073173	23mm	
W073174	24mm	★STOCK
W073175	25mm	
W073176	26mm	

W073177	27mm	
W073178	28mm	
W073179	29mm	
W073180	30mm	
W073181	32mm	
W073250	1/4"	
W073251	5/16"	
W073252	3/8"	
W073253	7/16"	
W073254	1/2"	
W073255	9/16"	
W073256	5/8"	
W073257	11/16"	★STOCK
W073258	13/16"	★STOCK
W073259	13/16"	
W073260	7/8"	★STOCK
W073261	15/16"	
W073262	1"	
W073263	1-1/16"	
W073264	1-1/8"	
W073265	1-1/4"	

No. W073022

## DOUBLE OPEN WRENCH (TYPE II)

**CR-V**



- Chrome-vanadium steel
- Chrome plated, mirror polished

W073022	6x7mm	★STOCK
W073023	8x9mm	★STOCK
W073025	10x11mm	★STOCK
W073027	12x13mm	★STOCK
W073029	14x15mm	★STOCK
W073031	16x17mm	★STOCK
W073034	18x19mm	★STOCK
W073036	20x22mm	★STOCK
W073037	21x23mm	★STOCK
W073039	24x27mm	★STOCK
W073040	25x28mm	★STOCK
W073041	27x30mm	★STOCK
W073042	30x32mm	★STOCK

No. W073109

## DOUBLE OPEN WRENCH (DIN)

**CR-V**



- Chrome-vanadium steel
- Chrome plated, mirror polished

W073109	6x7mm	★STOCK
W073110	8x9mm	★STOCK
W073112	10x11mm	★STOCK
W073114	12x13mm	★STOCK
W073116	14x15mm	★STOCK
W073118	16x17mm	★STOCK
W073121	18x19mm	★STOCK
W073123	20x22mm	★STOCK
W073124	21x23mm	★STOCK
W073126	24x27mm	★STOCK
W073127	25x28mm	★STOCK
W073128	27x30mm	★STOCK
W073129	30x32mm	★STOCK

No. W073366

## DOUBLE RING WRENCH



- Carbon steel
- Chrome plated, mirror polished

W073366	6x7mm	
W073367	8x9mm	
W073433	10x11mm	★STOCK
W073435	12x13mm	★STOCK
W073437	14x15mm	★STOCK
W073439	16x17mm	★STOCK
W073442	18x19mm	★STOCK
W073444	20x22mm	★STOCK
W073445	21x23mm	★STOCK
W073447	24x27mm	
W073448	25x28mm	
W073449	27x30mm	
W073450	30x32mm	

No. W073324

## DOUBLE RING WRENCH (TYPE I)

**CR-V**



- Chrome-vanadium steel
- Chrome plated, mirror polished

W073324	6x7mm	★STOCK
W073325	8x9mm	★STOCK
W073327	10x11mm	★STOCK
W073329	12x13mm	★STOCK
W073331	14x15mm	★STOCK
W073333	16x17mm	★STOCK
W073336	18x19mm	★STOCK
W073338	20x22mm	★STOCK
W073339	21x23mm	★STOCK
W073341	24x27mm	★STOCK
W073342	25x28mm	★STOCK
W073343	27x30mm	★STOCK
W073344	30x32mm	★STOCK

No. W003300

★STOCK

## 8PC DOUBLE OPEN WRENCH SET(DIN)

CR-V



- Chrome-vanadium steel and heat treated for strength and durability
- Sand blasting and chrome plated
- Size: 6x7, 8x9, 10x11, 12x13, 14x15, 16x17, 18x19, 20x22mm

No. W003302

★STOCK

## 8PC DOUBLE RING END WRENCH SET(DIN)

CR-V



- Chrome-vanadium steel and heat treated for strength and durability
- Sand blasting and chrome plated
- Size: 6x7, 8x9, 10x11, 12x13, 14x15, 16x17, 18x19, 20x22mm

No. W003304

★STOCK

## 6PC COMBINATION WRENCH SET(DIN)

CR-V



- Chrome-vanadium steel and heat treated for strength and durability
- Sand blasting and chrome plated
- Size: 8, 10, 12, 14, 16, 18mm

No. W003321

★STOCK

## 7PC RATCHET SPANNER SET

- 7PC ratchet spanner set : size: 3/8", 7/16", 1/2", 9/16", 5/8", 11/16, 3/4"



No. W003322

- 7PC ratchet spanner set (metric): 10, 11, 12, 13, 14, 15, 16mm



No. W003315

NEW

## 16PC COMBINATION WRENCH SET



- 6mm, 8mm, 10mm, 11mm, 12mm, 13mm, 14mm, 15mm, 17mm, 19mm, 21mm, 22mm, 24mm, 27mm, 30mm, 32mm

No. W003316

NEW

## 26PC COMBINATION WRENCH SET



- 6mm, 7mm, 8mm, 9mm, 10mm, 11mm, 12mm, 13mm, 14mm, 15mm, 16mm, 17mm, 18mm, 19mm, 20mm, 21mm, 22mm, 23mm, 24mm, 25mm, 26mm, 27mm, 28mm, 29mm, 30mm, 32mm



**NEW**

**★STOCK**

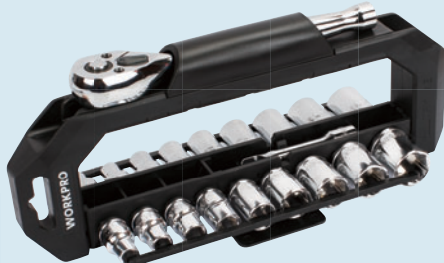
## 20PC SOCKET SET WITH ROTATABLE FRAME

No. W003072

CR-V

SAE

Metric



- 1PC 3/8" Dr. quick release ratchet handle 72-tooth
- 1PC 3/8" Dr. 3" extension bar
- 9PC 3/8" Dr. SAE sockets,  
6pt socket: 1/4", 5/16", 3/8", 7/16", 1/2", 9/16", 3/4", 11/16", 5/8"
- 9PC 3/8" Dr. metric sockets, 6pt socket: 8mm, 9mm, 10mm,  
11mm, 13mm, 14mm, 16mm, 17mm, 19mm



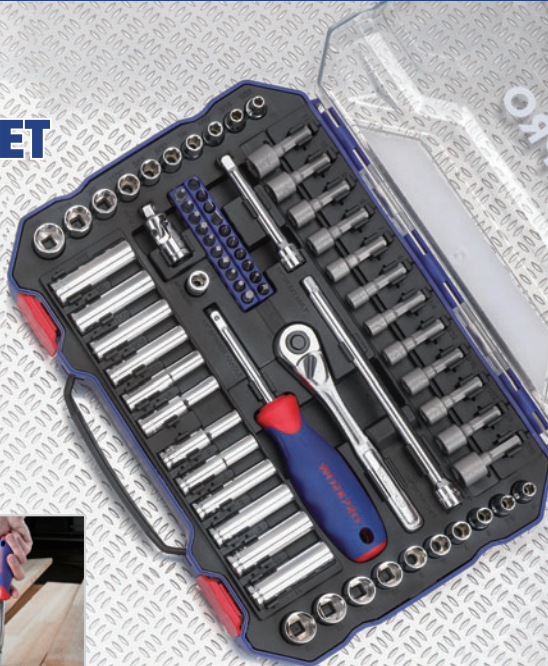
## 70PC 1/4" DR. 6-POINT SOCKET SET

No. W003068

CR-V

SAE

Metric



**NEW**

★**STOCK**



- 1PC 1/4" Dr. quick release ratchet handle 45-tooth
- 1PC 1/4"×3" extension bar
- 1PC 1/4"×6" extension bar
- 1PC 1/4" universal joint
- 1PC 1/4"Dr. spinner handle
- 1PC 1/4"Dr. coupler
- 10PC 1/4"Dr. SAE sockets, 6pt:5/32",3/16",7/32",1/4",9/32",5/16",11/32",3/8",7/16",1/2"
- 10PC 1/4"Dr. metric sockets, 6pt:5mm,5.5mm,6mm,7mm,8mm,9mm,10mm,11mm,12mm,13mm
- 6PC 1/4"Dr. sae deep sockets, 6pt:1/4",9/32",5/16",11/32",3/8",7/16"
- 6PC 1/4"Dr. metric deep sockets, 6pt:6mm,7mm,8mm,9mm,10mm,11mm
- 20PC bits with holder
- 12PC nut drivers
- 1PC transparent box



## 3/8" DR. DUAL-DRIVE RATCHET

- Ergonomic handle with slip-resistant rubber grip
- Patented Dual-drive technology 2x faster than standard ratcheting
- Hold the ratchet ring to engage Dual-drive
- Rotate the handle only to work as standard ratchet
- At the starting point, directly rotate the ratchet ring can work faster



**2X**  
**FASTER**  
THAN STANDARD  
RATCHETING



**GIVE A HOLD OF THE RATCHET CAP,  
SPEED UP YOUR WORK.**

No. W003001

### 32PC SOCKET SET

- CR-V socket set
- 10PC 3/8" Dr. SAE sockets: 5/16", 3/8", 7/16", 1/2", 9/16", 5/8", 11/16", 3/4", 13/16", 7/8"
- 11PC 3/8" Dr. metric sockets: 9, 10, 11, 12, 13, 14, 15, 16, 17, 18, 19mm
- 7PC CR-V combination wrenches: 3/8", 7/16", 1/2", 9/16", 5/8", 11/16", 3/4"
- 1PC 3" extension bar
- 2PC spark plugs: 13/16"(21mm), 5/8"(16mm)
- 1PC 3/8" Dr. ratchet handle
- 1PC durable blow molded case

CR-V

3/8"  
DRIVE



★STOCK

No. W003057

★STOCK

## 108PC HIGH QUALITY MECHANICS TOOL SET

CR-V

SAE

Metric

Contains the assortment that needed for most daily applications  
 This Set includes 1/4" and 1/2" quick release ratcheting handle.  
 Sockets in Metric size. All tools are in high quality chrome vanadium steel.



- 17PC 1/2 in. Dr. Metric (6-Point) Short Sockets (CR-V): 10, 11, 13, 14, 15, 16, 17, 18, 19, 20, 21, 22, 23, 24, 27, 30, 32mm
- 5PC 1/2 in. Dr. Metric (6-Point) Long Sockets (CR-V): 14, 15, 17, 19, 22mm
- 2PC 1/2 in. Dr. Extension Bar: 5", 10"
- 1PC 1/2 in. Dr. Universal joint
- 8PC 1/2 in. Dr. E Sockets (CR-V): E10, E11, E12, E14, E16, E18, E20, E24
- 1PC 1/2 in. Dr. Quick Release Ratchet Handle
- 2PC 1/2 in. Dr. Spark Plug Sockets (CR-V): 16mm, 21mm
- 1PC 1/2 in. Dr. Adaptor
- 17PC 1/4 in. Dr. Metric (6-Point) Short Sockets (CR-V): 4, 4.5, 5, 5.5, 6, 7, 8, 9, 10, 11, 12, 13, 14mm
- 8PC 1/4 in. Dr. Metric (6-Point) Long Sockets (CR-V): 6, 7, 8, 9, 10, 11, 12, 13mm
- 2PC 1/4 in. Dr. Extension Bar: 2", 3"
- 1PC 1/4 in. Dr. Universal joint
- 1PC 1/4 in. Dr. Quick Release Ratchet Handle
- 5PC 1/4 in. Dr. E Sockets (CR-V): E4, E5, E6, E7, E8
- 1PC 1/4 in. Dr. Slider
- 3PC Hex Key ( Carbon Steel) : 1.5, 2, 2.5mm
- 1PC 1/4" X 6" Piercing Bar
- 18PC 1/4 in. Dr. Bits: SL4, SL5.5, SL6.5, PH1, PH2, PZ1, PZ2, H3, H4, H5, H6, T8, T10, T15, T15, T20, T25, T27, T30
- 17PC 5/16 in. Dr. Bits: SL8, SL10, SL12; T40, T45, T50, T55, T60; PH3, PH4; PZ3, PZ4; HEX7, HEX8, HEX10, HEX12, HEX14
- 1PC 1/2" Flexible Sleeve

No. W003050

## 62PC 1/4" AND 3/8" SOCKETS RATCHET SET

CR-V

SAE

Metric

- 32 PC CR-V steel screwdriver bits
- 1PC magnetic bit holder
- 1PC ratchet screwdriver handle
- 1PC 3/8" Dr. ratchet handle with quick release function
- 1PC 3/8" to 1/4" adaptor
- 1PC 1/4" to 1/4" coupler
- 1PC 3/8" Dr. x 3" extension bar
- 11PC 1/4" Dr. sockets in SAE: 5/32", 3/16", 7/32", 1/4", 9/32", 5/16", 11/32", 3/8", 13/32", 7/16", 1/2"
- 10PC 1/4" Dr. sockets in Metric: 4, 4.5, 5, 5.5, 6, 7, 8, 9, 10, 11mm
- 3pc 3/8" Dr. sockets: 12, 13, 14mm
- 1PC 16" metal case



No. W072001

★**STOCK**

## STAMPED ADJUSTABLE WRENCH



- Forged carbon steel construction for strength
- Chrome plated for rust resistance and longer life

W072001	6"(150mm)
W072002	8"(200mm)
W072003	10"(250mm)
W072004	12"(300mm)
W072005	15"(375mm)



No. W003200

★**STOCK**

## 3PC ADJUSTABLE WRENCH SET



- Forged carbon steel construction for strength
- Chrome plated for rust resistance and longer life
- Size: 6", 8", 10"

No. W003201

★**STOCK**

## 3PC ADJUSTABLE WRENCH SET WITH COMFORT HANDLE

- Chrome-vanadium steel construction for strength
- Chrome plated for rust and corrosion resistance
- Dual-material comfort grip handle
- Size: 6", 8", 10"





**WORKPRO®**

# ELECTRICAL TOOLS



INSULATED SCREWDRIVERS

INSULATED PLIERS

WIRE STRIPPER

No. W095001

★STOCK

## 8"(220MM) VDE INSULATED LONG NOSE PLIERS

**1,000V**



- Chrome-vanadium steel with Ni-Fe coating
- Dual-material comfort grip handle
- Integral guards help prevent hand contact with conductive parts
- Insulated voltage:1,000V

No. W095004

★STOCK

## 6"(160MM) VDE INSULATED DIAGONAL CUTTING PLIERS

**1,000V**



- Chrome-vanadium steel with Ni-Fe coating
- Dual-material comfort grip handle
- Integral guards help prevent hand contact with conductive parts
- Insulated voltage:1,000V

No. W095005

★STOCK

★STOCK

## 10"(250MM) VDE INSULATED GROOVE JOINT PLIERS

**1,000V**



- Chrome-vanadium steel with Ni-Fe coating
- Dual-material comfort grip handle
- Integral guards help prevent hand contact with conductive parts
- Insulated voltage:1,000V

No. W094001

★STOCK

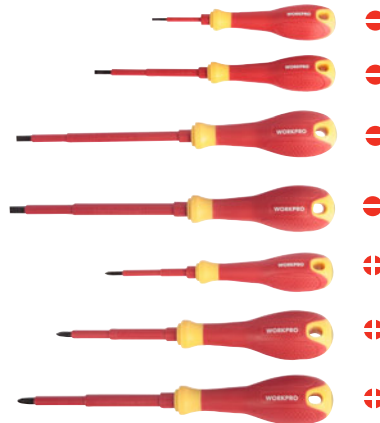
## VDE INSULATED SCREWDRIVER

- VDE approved handle
- Insulated to 1,000V
- Ergonomic comfort grip handle

**1,000V**



W094001	2.5X50mm
W094008	3.5X75mm
W094002	4X100mm
W094003	5.5X150mm
W094004	6.5X150mm
W094005	PH0X75mm
W094006	PH1X100mm
W094007	PH2X125mm





## WIRE STRIPPER MAGIC BOX

**NEW**

★STOCK

No. W091025

- Innovative design for NM pliers with maximum durability and tool life
- Quickly strips 6-24 AWG solid wire, meets daily use
- Come with transparent plastic box for easy storage

mm mm<sup>2</sup>  
 1.6 ∅ 2.5  
 1.3 ∅ 1.5  
 1.0 ∅ 1.0  
 0.8 ∅ 0.75  
 0.65 ∅ 0.4  
 0.5 ∅ 0.2



mm mm<sup>2</sup>  
 4.1 ∅ 16  
 3.6 ∅ 10  
 2.6 ∅ 6  
 2.0 ∅ 4



○RG6  
 ○RG59



☾☾  
 3X2.5mm<sup>2</sup>  
 ☾☾  
 3X1.5mm<sup>2</sup>



- Creative design, it strips off wire by a lightly push, simple and easy
- Four specifications on four sides, meets daily needs
- Equipped with transparent plastic box for easy storage
- Convenient removable sliding panel at the bottom for cleaning scraps
- 3cm long depressed square on the top, providing various length measurements







**WORKPRO®**

TUBE CUTTER  
PIPE WRENCH  
TUBE BENDER

**PLUMBING TOOLS**

No. W103003

★STOCK

## HEAVY DUTY TUBING BENDER

- Bending applications: soft copper, aluminum and brass tubing
- Max. bending radius : 90°
- Max. bending outer diameter: 19/32", 7/8" (15mm, 22mm)

W103003	19/32", 7/8"
W103008	15mm, 22mm



No. W103005

★STOCK

## FLARING TOOL

- Chrome plated steel die bars and clamping screws
- Drop forged, heat treated steel yoke
- Hardened, self-centering cone produces perfect 45° flares
- For soft copper, aluminum and brass tubing
- Tubing outer diameter: 3/16", 1/4", 5/16", 3/8", 7/16", 1/2", 5/8" (5, 6, 8, 10, 12, 14, 16mm)

W103005	3/16", 1/4", 5/16", 3/8", 7/16", 1/2", 5/8"
W103009	5, 6, 8, 10, 12, 14, 16mm



No. W033001

★STOCK

## BENCH VISE FIX WITH ANVIL

- Material: ductile iron

Item#	Jaw Width	Jaw Opening
W033001	4"(100mm)	3"(75mm)
W033002	5"(125mm)	4"(100mm)
W033003	6"(150mm)	5"(125mm)
W033004	8"(200mm)	6"(150mm)



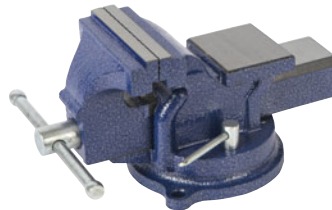
No. W033005

★STOCK

## BENCH VISE SWIVEL WITH ANVIL AND SWIVEL BASE

- Material: ductile iron

Item#	Jaw Width	Jaw Opening
W033005	4"(100mm)	3"(75mm)
W033006	5"(125mm)	4"(100mm)
W033007	6"(150mm)	5"(125mm)
W033008	8"(200mm)	6"(150mm)



# WORKPRO®

## STORAGES AND TOOL SETS

TOOL BAG

TOOL BOX

TOOL CABINET

TOOL TROLLEY

TOOL SHELVING

TOOL SET





## 18" CLOSE TOP WIDE MOUTH STORAGE BAG

★STOCK

- Adjustable strap allows for easy access to contents
- Ideal for carrying hand tools and other small to medium items
- Top zipped wide open mouth for easy approaching tools
- Outer mesh pocket stores personal belongings, small tools & accessories

W081023

18"(460x220x240mm)



No. W081021

★STOCK  
**HOT**

### 14" CLOSE TOP WIDE MOUTH STORAGE BAG

- Adjustable strap allows for easy access to contents
- Ideal for carrying hand tools and other small to medium items
- Top zipped wide open mouth for easy approaching tools
- Outer mesh pocket stores personal belongings, small tools & accessories



No. W081022

★STOCK  
**HOT**

### 16" CLOSE TOP WIDE MOUTH STORAGE BAG WITH WATER PROOF RUBBER BASE

- Adjustable strap allows for easy access to contents
- Ideal for carrying hand tools and other small to medium items
- Rubber foam bottom keeps bag sturdy, and protects contents from hard falls
- Top zipped wide open mouth for easy approaching tools
- Outer mesh pocket stores personal belongings, small tools & accessories



## MULTI-FUNCTION TOOL BACKPACK

★STOCK

No. W081065

- 600D nylon material
- Impact Waterproof Molded Base - Protects contents and allows backpack to stand up
- Large front pocket easily fits fish tapes, Wide opening fits power tools, hand tools, flashlights, etc.
- Back storage bay for laptop (15"), tablet and business accessories
- Maximum load weight: 65 lbs



No. W081074

★STOCK

### MULTI-FUNCTION TOOL BACKPACK

- 16" Tool Backpacks with Handbag
- 60 pockets and 15 belts for organize variety of tools
- Fully molded bottom protects from the elements
- Padded back and shoulder straps provide more comfortable
- Pull out insert comes with



No. W081070

★STOCK

### 15" CENTER TRAY COLLAPSABLE TOOL STORAGE BAG

- Open-top design for easy access to contents
- Reinforced handle protector for comfortable and maximum durability
- Multi-components storage case included for hardware storage
- Outer mesh pocket stores personal belongings, small tools & accessories
- 14 Multi-use pockets inside, and 8 outside organize tools and accessories



## SAFE CASE

- Made from ultra high impact plastic
- Water-proof and shock-proof



W083009



W083010



W083011



W083012

W083009	10.5"(260x245x175mm)
W083010	14"(345x290x145mm)
W083011	18"(460x360x175mm)
W083012	20.5"(560x430x215mm)

No. W083015

★**STOCK**

## PLASTIC TOOL BOX

- Sturdy carrying handle
- High impact plastic
- Lift out carry tray
- Built-in organization compartments



W083015	16"(360x170x205MM)
W083016	20"(455x200x255MM)
W083017	22.5"(360x170x205MM)

No. W083004

## PLASTIC TOOL BOX

- Sturdy carrying handle
- High impact plastic
- Lift out carry tray
- Built-in organization compartments



W083004	16.5"(412x214x188mm)	★ <b>STOCK</b>
W083005	18.5"(472x250x224mm)	
W083006	21"(536x292x271mm)	
W083007	23.5"(600x340x317mm)	
W083008	26.5"(670x393x370mm)	



# WORKPRO®

## TOOL SETS

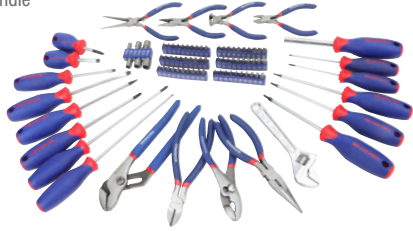


No. W009045

## 90PC TOOL SET

- 1PC 6" diagonal pliers
- 1PC 6" slip joint pliers
- 1PC 6" long nose pliers
- 1PC 8" groove joint pliers
- 1PC 6" adjustable wrench
- 1PC mini diagonal pliers
- 1PC mini end cutting pliers
- 1PC mini long nose pliers
- 1PC mini needle nose pliers
- 13PC screwdriver:
  - Slotted: 1/8" x 3", 3/16" x 3", 3/16" x 6", 1/4" x 1-1/2", 1/4" x 4"; Phillips: PH0 x 3", PH1 x 6", PH2 x 1-1/2", PH2 x 4"; Square: S1 x 4", S2 x 4"

- Star: T10 x 4", T20 x 4"
- 6PC socket set: 3/16", 1/4", 9/32", 5/16", 11/32", 3/8"
- 60PC bits with holder
- 1PC 60mm extension bits holder
- 1PC magnetic handle



No. W009040

★STOCK

## 34PC TOOL SET

- 5PC precision screwdriver set
- 1PC 9" torpedor lever
- 7.5m tape measure
- 1PC quick-opening retractable knife
- 1PC 8" wrench
- 16oz fibreglass hammer
- 20PC bits
- Magnetic holder
- 1PC 6" long nose pliers
- 1PC 6" diagonal pliers
- 1PC 6" slip joint pliers



No. W009062

★STOCK

## 75PC PINK TOOL SET

- 10PC SK5 knife blades
- 1PC safety knife
- 1PC 8-1/2" scissors
- 5PC precision screwdriver set
- 40PC 1" bits with holder
- 1PC magnetic screwdriver bit holder
- 8PC SAE hex keys
- 1PC 6"(150mm) Slip joint pliers
- 1PC 6"(150mm) long nose pliers
- 1PC 6"(152mm) adjustable wrench
- 1PC 12oz claw hammer
- 1PC 10ft auto-lock tape measure with SAE and metric marking blade

- 1PC 9" (225mm) magnetic torpedo level
- 1PC 3AAA 9LED flashlight
- 1CASE 32PC hardware
- 1PC 14" tool bag



No. W009013

★STOCK

## 56PC SCREWDRIVER AND BITS SET

- 8PC precision screwdrivers, CR-V, chrome plated, size: Slotted: 1.5x40, 2.0x40, 2.5x40  
Phillips: PH0x40, PH00x40, PH1x40mm  
Torx: T9, T10
- 40PC 25mm CR-V bits with 4 holders, size: Pozzi: PZ0, PZ1x2, PZ2x5, PZ3x2  
Slotted: 3, 4, 5, 5.5, 6, 7  
Phillips: PH0, PH1, PH2, PH3  
Square: S0x2, S1x2, S2x4, S3x2  
Hex: H1.5, H2.5, H3, H4, H5, H6  
Torx: T10, T15, T20, T25
- 6PC screwdrivers, CR-V, chrome plated: Slotted: 5x75mm, 6x100mm, 8x150mm



- Phillips: PH1x75mm, PH2x100mm, PH3x150mm
- 1PC bit driver, carbon steel blade, chrome plated
- 1PC blow molded case

No. W009014

★STOCK

## 28PC HOUSEHOLD TOOL KIT

- 1PC 6" long nose pliers, carbon steel, double injection handle
- 1PC 6" diagonal pliers, carbon steel, double injection handle
- 1PC 6" adjustable wrench, carbon steel with chrome plated
- 1PC 5-1/2" scissors, stainless steel blade
- 1PC 18mm snap-off knife
- 3PC 18mm snap-off knife handles
- 1PC 8oz fiberglass handle claw hammer
- 1PC 3m tape measure
- 2PC screwdrivers, CR-V blade, chrome plated: Phillips: PH1x100mm, 3x75mm
- 1PC magnetic bit driver

- 16PC 1" CR-V bits, size: Slotted: 3, 5, 6, 7mm  
Torx: T10, T15  
Hex: H4, H5  
Phillips: PH0, PH1, PH2, PH3  
Pozzi: PZ0, PZ1, PZ2, PZ3
- 1PC 9" torpedo level
- 1PC blow molded case



No. W003020

★STOCK

## 52PC TOOL AND SOCKET SET

- 1PC 6" long nose pliers, carbon steel, double dipping handle
- 1PC 6" diagonal pliers, carbon steel, double dipping handle
- 1PC 5" locking pliers, carbon steel, nickel plated
- 9PC folding hex keys, carbon steel, black finish, size: 5/64", 3/32", 7/64", 1/8", 9/64", 5/32", 3/16", 7/32", 1/4"
- 1PC 3/8" Dr. ratchet handle
- 1PC spinner disk
- 1PC 3" extension bar, carbon steel, chrome plated
- 1PC 3/8" Dr. to 1/4" Dr. adaptor
- 28PC 1/4" Dr. sockets, carbon steel, heat treatment, chrome plated, metric size: 4, 4.5, 5, 5.5, 6, 6.5, 7, 7.5, 8, 9, 10, 11, 12, 13mm; SAE size: 5/32", 3/16", 7/32", 1/4", 9/32", 5/16", 11/32", 3/8", 13/32", 7/16", 15/32", 1/2", 17/32", 9/16"
- 3PC 1/4" Dr. sockets (8pt.): 1/4", 5/16", 3/8"
- 4PC 3/8" Dr. sockets, metric: 14mm, 15mm; SAE: 5/8", 11/16"
- 1PC blow molded case



No. W009016

★**STOCK**

## 77PC GENERAL PURPOSE TOOL SET

- 1PC 9" torpedo level
- 1PC 3m tape measure
- 1PC junior hacksaw, high carbon steel blade
- 1PC 12" stainless steel ruler
- 9PC hex key set
- 1PC 18mm snap-off knife
- 3PC 18mm 65Mn blades in a plastic box
- 1PC 6" long nose pliers
- 1PC 6" combination pliers
- 1PC 6" adjustable wrench
- 1PC 16oz fiberglass claw hammer
- 4PC screwdrivers
- 1PC magnetic bit driver
- 40PC 1" CR-V bits
- 1PC 8" half round file
- 6PC precision screwdrivers
- 1PC 100-250V voltage tester
- 2PC mini spring clamps
- 1PC blow molded case



No. W009022

## 125PC 3-DRAWER HOME TOOL SET

- 8PC Metric hex keys
- 8PC SAE hex keys
- 1PC 3/8" Dr. ratchet handle
- 1PC 3/8" Dr. x 3" extension bar
- 1PC 3/8" Dr. x 5/8" spark plug socket
- 1PC 3/8"(F)x 1/4"(M) adaptor
- 9PC 1/4" Dr. 6pt. SAE sockets
- 12PC 3/8" Dr. 6pt. sockets (SAE and Metric)
- 1PC 6" adjustable wrench
- 1PC 6" long nose pliers
- 1PC 6" diagonal pliers
- 1PC 6" slip joint pliers
- 1PC magnetic bit driver
- 20PC 1" CR-V bits with holder
- 1PC retractable utility knife
- 10PC knife blades with plastic case
- 1PC 8oz claw hammer
- 1PC 10FT. tape measure
- 1PC 9" magnetic torpedo level (3 vials)
- 2PC stubby screwdrivers: 1/4 x 1-1/2", PH1 x 1-1/2"
- 1PC 5-1/2" scissors
- 1PC 3/4" x 30FT. electrical tape
- 1PC 9mm snap-off knife
- 40PC cable ties





No. W009028

★**STOCK**  
**HOT**

## 239PC MECHANIC TOOL KIT

- 1PC 3/8" Dr. ratchet handle
- 13PC 3/8" Dr. sockets: 1/4", 5/16", 11/32", 3/8", 7/16", 15/32", 1/2", 9/16", 5/8", 13/16", 11/16", 3/4", 7/8"
- 11PC 1/4" Dr. sockets: 5/32", 3/16", 7/32", 1/4", 9/32", 5/16", 11/32", 3/8", 7/16", 15/32", 1/2"
- 4PC 1/4" deep sockets: 3/16", 1/4", 9/32", 5/16"
- 4PC 3/8" deep sockets: 5/16", 3/8", 7/16", 1/2"
- 1PC 3/8" Dr.(F) x 1/4", Dr. (M) adaptor
- 1PC 1/4" Dr. x 50mm extension bar
- 1PC 3/8" Dr. x 70mm extension bar
- 1PC 1/4" Dr. sliding bar
- 11PC metric CR-V hex key set: 1.27, 1.5, 2, 2.5, 3, 3.5, 4, 4.5, 5, 5.5, 6mm
- 11PC SAE CR-V hex key set: 0.05", 1/16", 5/64", 3/32", 7/64", 1/8", 9/64", 5/32", 3/16", 7/32", 1/4"
- 1PC magnetic bits holder handle
- 60PC 1" CR-V bits
- 6PC nut drivers: 3/16", 1/4", 9/32", 5/16", 11/32", 3/8"
- 8PC combination wrenches: 1/4", 5/16", 3/8", 7/16", 1/2", 9/16", 5/8", 11/16"
- 1PC 8" adjustable wrench
- 1PC 7" combination pliers
- 1PC 6" long nose pliers
- 1PC 10" groove joint pliers
- 6PC screwdrivers:  
Slotted: 3/16"x3", 1/4"x4"

Phillips: PH0x3", PH2x4"  
Square: S1x4", S2x4"

- 1PC crimping tools
- 55PC terminals
- 1PC 18mm snap-off knife
- 20PC cable ties
- 1PC mini hacksaw
- 6PC precision screwdrivers: 1.4, 2.0, 2.4, 3.0, PH0, PH1
- 10PC 18mm snap-off knife blades with plastic box
- 1PC metal box



No. W009030

★**STOCK**

## 111PC TOOL KIT WITH ALUMINUM TROLLEY

- 1PC 300mm steel ruler
- 1PC junior saw
- 3PC saw blades
- 1PC 160mm combination pliers
- 1PC 160mm diagonal cutting pliers
- 1PC 240mm box joint pliers
- 9PC hex key set: 1/16", 5/64", 3/32", 1/8", 5/32", 3/16", 1/4", 5/16", 3/8"
- 1PC 3m tape measure
- 2PC screwdrivers: 1/4"x4", PH2x4"
- 1PC magnetic bit holder with TPR handle
- 6PC precision screwdrivers
- 40PC 1" CR-V bit set
- 1PC 3/8" Dr. ratchet handle
- 1PC 1/4" Dr. sliding T-bar
- 1PC 3/8" Dr. 75mm extension bar
- 1PC 3/8" Dr. x 21mm spark socket
- 1PC 3/8" Dr. to 1/4" Dr. socket adaptor
- 1PC 1/4" Dr. bit adaptor
- 8PC 1/4" Dr. sockets: 4, 4.5, 5, 5.5, 6, 7, 8, 9mm
- 9PC 3/8" Dr. sockets: 10, 11, 12, 13, 14, 15, 17, 18, 19mm

- 1PC 18mm snap-off knife
- 10PC 18mm snap-off knife blades with plastic box
- 1PC 450g hammer with fiberglass handle
- 8PC combination wrenches: 7, 8, 9, 10, 11, 12, 13, 14mm
- 1PC 225mm torpedo level





No. W009044

**NEW**

**★STOCK  
HOT**

## 408PC MECHANICS TOOL SET WITH 3DRAWER HEAVY METAL BOX

- 1PC utility knife
- 20PC SK5 utility knife blades
- 5PC Screwdriver 3/16"×4", 1/4"×6", ph2×1-1/2", ph1×3", ph2×4"
- 1PC magnetic screwdriver handle
- 6PC precision screwdriver
- 60PC 1" CR-V bits with holder
- 11PC hex key , metric
- 11PC hex key, SAE
- 1PC 6" long nose pliers
- 1PC 6" diagonal cutting pliers
- 1PC 6" combination pliers
- 1PC 16oz ball pein hammer
- 1PC 7.5m( 25ft) tape measure
- 3PC quick-release ratchet handle: 1/4", 3/8", 1/2"
- 1PC 8" adjustable wrench,CR-V
- 8PC combination wrench:,metric, 8mm,10m-11mm12mm13mm14mm15mm17mm
- 8PC combination wrench , SAE, 1/4", 5/16", 3/8", 7/16", 1/2", 9/16", 5/8", 3/4"
- 10PC 1/4" CR-V socket ,metric, 6pt :5/32" 3/16", 7/32", 1/4", 9/32", 5/16", 11/32", 3/8", 7/16" 1/2"
- 10PC 1/4" CR-V socket ,SAE, 6pt:4mm ,5mm , 6mm , 7mm , 8mm ,9mm ,10mm , 11mm ,12mm 13mm
- 10PC 3/8" CR-V socket ,metric, 6pt :1/4", 5/16", 3/8", 7/16", 1/2", 9/16", 5/8", 11/16", 3/4", 13/16"
- 11PC 3/8" CR-V socket ,SAE, 6pt:7mm ,8mm, 9mm ,10mm ,11mm ,12mm , 13mm ,14mm 15mm ,17mm ,19mm ,
- 8PC 3/8" CR-V socket ,metric, ,12pt:5/16"3/8, 7/16" , 1/2" , 9/16" , 5/8" , 11/16" , 3/4" ,
- 11PC 3/8"CR-V socket ,SAE, 12pt:7mm ,8mm, 9mm ,10mm ,11mm ,12mm ,13mm ,14mm 15mm ,17mm ,19mm ,
- 6PC 1/2" CR-V socket ,metric, 6pt:1/2",9/16" 5/8" , 11/16" , 3 /4" , 7/8" ,
- 6PC 1/2" CR-V socket ,SAE, 6pt:14mm ,15mm 17mm ,18mm ,19mm ,21mm ,
- 2PC adaptor: 7/8"×1/4", 1/2"×3/8"
- 4PC extension bar:1/4"×3", 3/8"×3", 3/8"×6", 1/2"×5",
- 2PC spark plug socket: 3/8"×13/16", 3/8"×5/8"
- 1PC 8" crimping pliers
- 55PC terminals
- 1PC wire brush
- 40PC cable tie, 2.5"×120mm
- 90PC hardware with case
- 1PC metal box



No. W003025

★**STOCK  
HOT**

## 123PC SOCKET SET

- 3PC CR-V quick-release ratchet handles: 1/4", 3/8", 1/2"
- 10PC 1/4" Dr. CR-V sockets: 4, 5, 6, 7, 8, 9, 10, 11, 12, 13mm
- 4PC 1/4" Dr. CR-V deep sockets: 8, 9, 10, 12mm
- 11PC 3/8" Dr. CR-V sockets: 9, 10, 12, 13, 14, 15, 16, 17, 18, 19mm
- 4PC 3/8" Dr. CR-V deep sockets: 13, 14, 15, 17mm
- 8PC 3/8" Dr. E-style CR-V sockets: E8, E10, E11, E12, E14, E16, E18, E20mm
- 7PC 1/2" Dr. CR-V sockets: 20, 21, 22, 24, 27, 30, 32mm
- 3PC CR-V universal joints: Dr. 1/4", 3/8", 1/2"
- 2PC CR-V adaptors: 1/2" Dr. (M) x 3/8" Dr. (F), 1/4" Dr. (M) x 3/8" Dr. (F)
- 1PC 1/4" Dr. CR-V coupler
- 1PC 1/4" Dr. CR-V spinner handle
- 17PC 3/8" Dr. CR-V bits sockets:  
Torx: T20, T30, T40, T45, T50, T55, T60,  
Flathead: FD5.5, FD6.5  
Phillips: PH1, PH2  
Pozi: PZ1, PZ2  
Hex: H3, H4, H5, H6
- 18PC 25mm S2 screwdriver bits with holder
- 3PC 3/8" Dr. CR-V spark plug sockets: 14mm, 16mm, 21mm
- 11PC CR-V combination wrenches: 8, 9, 10, 11, 12, 13, 14, 16, 17, 18, 19mm
- 5PC CR-V extension bars: 1/4" Dr.x50mm,

- 3/8"Dr. x 75mm, 3/8"Dr. x 150mm, 1/2" Dr. x125mm, 1/2"Dr. x 250mm
- 1PC 1/2" Dr. x250mm CR-V flex handle
- 2PC screwdrivers: 6 x 100mm, PH2 x 100mm
- 1PC 1/2"Dr. oil filter wrench
- 1PC voltage tester
- 1PC CR-V 12.5mm socket for cover of cylinder: T52x100L
- 9PC CR-V long hex key set: 1.5, 2, 2.5, 3, 4, 5, 6, 8, 10mm
- 1PC blow molded case



No. W009036

★**STOCK  
HOT**

## 156PC HOME REPAIRING TOOL SET

- 1PC 16" zip-top tool bag
- 1PC 9" plastic torpedo level
- 8PC Metric hex key set
- 8PC SAE hex key set
- 1PC magnetic bit holder
- 60PC 1" CR-V bits
- 6PC nut drivers
- 1PC 3m tape measure
- 1PC 6" mini saw
- 1PC 7" curved jaw locking pliers
- 1PC 7-1/2" diagonal pliers
- 1PC 8" long nose pliers
- 1PC 8" adjustable wrench
- 1PC 8" groove-joint pliers
- 6PC combination wrenches with clip
- 6PC precision screwdriver set
- 1PC utility knife
- 10PC utility knife blade set in plastic box
- 40PC cable ties
- 1PC 16oz tubular claw hammer



**WORKPRO®**



**AUTOMOTIVE TOOLS**

No. W004400

## 3PC WIRE BRUSH



- Lightweight polycast handle
- 1PC nylon bristle brush
- 1PC brass bristle brush
- 1PC stainless steel bristle brush

W004400 7"

No. W113004

★STOCK

## 2LB MAGNETIC PICK UP TOOL



- Stainless steel antenna
- Multi-angle ball joint neck
- Powerful magnet
- Extends up to 650mm

W113004 2LB/650mm

No. W113006

★STOCK

## TELESCOPING INSPECTION MIRROR



- 2" round mirror
- Stainless steel antenna
- Multi-angle ball joint neck

W113005 17.5"(440mm)

W113006 36"(920mm)

No. W114017

★STOCK

## 8-IN-1 DIGITAL TIRE GAUGE



- Lanyard, magnet for easy hanging
- Includes: tire pressure gauge, LED flashlight, glass breaker, flashing emergency light, seat belt cutter, tire tread depth meter, tire pressure release, magnet

No. W114018

★STOCK

## SWIVEL OIL FILTER WRENCHES



- The one-inch wide steel band
- The dimples in the band bite into the filter for safe and easy non-slip removal
- Great for both the DIYer and the professional
- Comfortable vinyl coated handle

W114018 2-3/4"~3-1/4"

W114019 3-7/16"~3-3/4"

W114020 4-1/8"~4-1/2"

No. W114006

## OIL FILTER CAP WRENCH

- Specially designed end cap wrench removes hard-to-reach multi-flute oil filters
- Precision-stamped, deep-reach cap wrench is constructed for a tight fit to remove original filters & filter housing
- Won't damage or crush the filter
- Heat-treated for long life
- Fits 3/8" ratchet and extensions



W114006 74/76mm

W114007 76mm ★STOCK

W114008 76mm

W114009 93mm

W114010 65/67mm ★STOCK

W114011 68mm

W114012 80mm

W114013 74mm

No.W112008

## SHOP ROLLER SEAT STOOL WITH TOOL TRAY

- Added bracing under seat for extra strength
- Heavy duty construction
- Vinyl padded seat
- 4PC 2.5" castors
- Max. load capacity: 150kg



W112008 355x440x365mm

No.W112004

## SHOP ROLLER SEAT STOOL

- Added bracing under seat for extra strength
- Heavy duty construction
- Vinyl padded seat
- 100mm heavy duty castors
- Max. load capacity: 150kg



W112004 355x440x365mm

No.W111001

## 6-WHEEL PLASTIC CREEPER



- Heavy duty one-piece, low-profile creeper features a body fitting design to provide optimum comfort & maximum durability
- 6 extra ball bearing nylon castors

W111001 36" ★STOCK  
W111003 40"

No.W111002

## STEEL RAIL CREEPER



- Economical all steel durable creeper
- 6 rotating castors for effortless movement in any direction
- Padded bench with head rest
- Powder coated finish

W111002 40" ★STOCK

No. W111005

## MULTI-FUNCTION FOLDABLE STEEL RAIL CREEPER

- Steel frame with powder coating finish
- Soft padded seat for comfort
- Easily converts in a roller seat stool
- 6PC 2" castors
- Max. load capacity: 110kg

★STOCK



W111005 36"(925x420x90mm)



No. W121001

★STOCK

## 3.6V AUTO-LOADING LITHIUM-ION SCREWDRIVER

- 1300mAh Lithium-ion battery
- 1/4" hex driver
- No-load speed: 210 RPM (forward/ reverse)
- Max. torque: 6 N-m
- Built-in LED work light
- Spindle lock-allows the tool continue its work when battery is empty
- 2 pack bits cartridge included(12PC bits)



W121001	230V	VDE
W121003	100-240V	UL

No. W121002

★STOCK

## 3.6V FAVOURABLE LITHIUM-ION SCREWDRIVER

- 1300mAh Lithium-ion battery
- 1/4" hex driver
- No load speed: 220 RPM (forward/ reverse)
- Max. torque: 3.5 N-m
- Built-in LED work light
- Spindle lock - allows the tool continue its work when battery is empty
- 10PC bits included



W121002	230V	VDE
W121004	100-240V	UL

No. W004511

## 2" MINI SAW

- Power: 350W
- Voltage: 110V/230V~50Hz/60Hz
- No load speed: 4000 RPM
- Adjustable cutting depth: 0-1/2" (0-12 mm)
- Sliding switch for safety
- Suitable for cutting various materials by using different saw blade , wood, plastic, tile, slate, aluminum, etc.
- Dust extraction adaptor
- Accessories:  
2HSS saw blade (60T/44T)  
1TCT blade (18T) 1 Diamond blade (G50)  
1 torx key & 1 U key,  
1 outer flange 1 soft tube (6.2")



W004511 2"(51mm)

No. W004500

★STOCK

## 152PC ROTARY TOOL KIT

- 1PC rotary tool
- 126PC rotary tool accessories
- 1PC magnetic bowl
- 4PC mini pliers
- 2PC gravers
- 12PC blades
- 6PC precision screwdrivers
- 1PC carrying bag



No. W124018

## 120PC COMBINATION DRILL AND BIT SET

- 3PC titanium coated HSS 4341 twist drills with hex shank: 1/16", 5/64", 3/32", 7/64", 1/8", 9/64", 5/32", 3/16", 7/32", 1/4", 9/32", 5/16", 3/8"
- 4PC masonry drills with hex shank: 5/32", 7/32", 1/4", 5/16"
- 5PC flat wood bits with hex shank: 1/4", 3/8", 1/2", 5/8", 3/4"
- 5PC nut drivers: 1/4", 5/16", 3/8", 7/16", 1/2"
- 3PC socket adaptors: 1/4", 3/8", 1/2"
- 20PC 1" CR-V screwdriver bits
- 12PC 2" CR-V screwdriver bits
- 12PC 3" CR-V screwdriver bits
- 14PC sockets: 3/8", 7/16", 1/2", 9/16", 5/8", 11/16", 3/4", 12mm, 13mm, 14mm, 15mm, 16mm, 17mm, 19mm
- 1PC 58mm magnetic bit holder
- 1PC 78mm magnetic bit holder
- 1PC 78mm stubby clear magnetic screw guide
- 1PC 120mm clear magnetic screw guide



No. W124015

★STOCK

## 176PC COMBINATION DRILL AND DRIVE SET

- 30PC titanium coated high speed drill bits: 1.5x2, 2.0x3, 2.5x3, 3.0x3, 3.2x3, 3.5, 4.0x3, 4.5, 4.8x3, 5.0, 5.5x3, 6.0, 6.5x3
- 9PC flat drill bits: 10, 11, 12, 14, 16, 18, 20, 22, 25mm
- 11PC masonry drill bits: 3.0x2, 4.0x2, 5.0x2, 6.0x2, 8.0x2, 10mm
- 5PC 300mm masonry drill bits: 4.0, 5.0, 6.0, 8.0, 10.0mm
- 17PC wood-boring drill bits: 3.0, 3.2, 3.5, 4.0, 4.5, 4.8, 5.0, 5.5, 6.0, 6.5, 7.0, 7.5, 8.0, 8.5, 9.0, 9.5, 10.0mm
- 32PC 25mm screwdriver bits
- 24PC 50mm screwdriver bits
- 20PC 65mm double end screwdriver bits: Phillips: PH1x4, PH2x4, PH3x4 Slotted: 5mmx4, 6mmx4
- 18PC nut driver sockets: 5mmx2, 6mmx2, 7mmx2, 8mmx2, 9mmx2, 10mmx2, 11mmx-2, 12mmx2, 13mmx2
- 4PC hole saws with hole saw adaptor: 32, 38, 45, 54mm
- 1PC hole saw adaptor
- 1PC bit holder
- 1PC counter sink
- 1PC metal ruler
- 1PC ratchet handle
- 1PC center punch



## 276PC ROTARY TOOL ACCESSORY SET

No. W124003

★**STOCK  
HOT**



- 52PC sanding bands
- 40PC sanding discs
- 40PC sanding discs with back adhesive
- 36PC emery cut-off wheels
- 1PC polishing compound
- 16PC fiberglass cut-off wheels
- 4PC flap wheels
- 8PC felt polishing wheels
- 1PC felt tip
- 6PC silicon carbide grinding wheels
- 6PC aluminum oxide grinding wheels
- 6PC white aluminum grinding wheels
- 2PC diamond wheels
- 1PC dressing stone
- 3PC collets
- 1PC wrench
- 2PC rubber emery wheels
- 12PC diamond cutters
- 9PC HSS twist drill bits
- 3PC mandrel wheels
- 3PC sanding shanks
- 1PC sucking disc
- 6PC rubber grinding stones
- 4PC silicon carbide grinding stones
- 6PC aluminum oxide grinding stones
- 1PC brass wheel brush
- 3PC stainless steel brushes
- 3PC bristle brushes
- 1PC plastic case



# WORKPRO®

## LASER MEASURE

LASER MEASURE

CROSS LINE LASER LEVEL

360-DEGREE CROSS

LINE LASER





No. W068021

## 135FT/40M LASER MEASURE

- Measure reference front and back, unit change, single measurement, continuous measurement, area and volume calculations
- Multi function measure: addition/subtraction, area/volume, distance, length, continuous measurement
- Inverted backlit LCD display improves readability
- Ergonomic soft grip prevents tool from easy drop, bump

**LASER**  
TECHNOLOGY  
Laser Measure 



Range	8in-135ft(0.21-40m)
Accuracy	±1/8" (3 mm)
Unit	Metric and Imperial
Batteries	2AAA alkaline batteries
Tool size	11.2cm x 4.4cm x 2.5cm
Package	Sandwich





## CROSS LINE LASER LEVEL

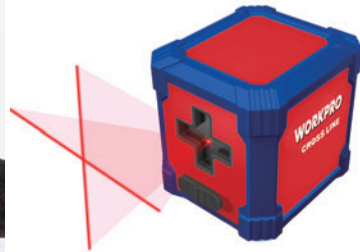
No. W068008

10 m  
30 ft

$\pm 8\text{mm}@10\text{m}$   
 $\pm 5/16''@30'$



★STOCK



- Self Leveling: projects bright horizontal & vertical lines onto flat surfaces and levels in few seconds
- Laser blinking reminds out-of-level
- Able to be used at any angle for various applications
- Compact, lightweight design
- Can be wall or tripod mounted for quick and easy setup with 1/4"-20 screw (clamp included, wall mount and tripod not included)
- Leveling range:  $\pm 4$  degrees



No. W068014

## CROSS LINE LASER LEVEL

- Self Leveling: projects bright horizontal & vertical lines onto flat surfaces and levels in few seconds
- Laser blinking reminds out-of-level
- Able to be used at any angle for various applications
- Compact, lightweight design
- Can be wall or tripod mounted for quick and easy setup with 1/4" -20 screw (clamp included, wall mount and tripod not included)
- Leveling range:  $\pm 4$  degrees

★**STOCK**



**LASER**  
TECHNOLOGY

Self Leveling Cross Line Laser



ITEM NO.	PAGE NO.	ITEM NO.	PAGE NO.	ITEM NO.	PAGE NO.	ITEM NO.	PAGE NO.	ITEM NO.	PAGE NO.
W000009	4	W001800	73	W004507	151	W011032	7	W014029	22
W000203	13	W001801	73	W004508	149	W011033	8	W014030	22
W000302	20	W002100	76	W004511	148	W011034	6	W014031	21
W000304	20	W002400	79	W009002	131	W011034	9	W014031	22
W000305	21	W002900	83	W009012	131	W012003	14	W014032	21
W000309	21	W002901	81	W009013	132	W012004	14	W014033	21
W000311	21	W003000	101	W009014	132	W012005	14	W014034	21
W000313	21	W003001	104	W009016	134	W012006	14	W014047	22
W000314	20	W003020	132	W009019	135	W012007	14	W014048	22
W000315	23	W003022	99	W009021	131	W012008	14	W014050	23
W000316	20	W003023	99	W009022	134	W012009	14	W014051	22
W000317	20	W003024	99	W009024	133	W012010	14	W014052	23
W000400	25	W003025	140	W009027	135	W012011	14	W014053	23
W000800	39	W003046	105	W009028	136	W012012	14	W014055	23
W000801	39	W003048	99	W009029	139	W013003	13	W014061	20
W000802	48	W003049	107	W009030	136	W013005	13	W014070	16
W000803	40	W003050	106	W009031	137	W013006	11	W014083	17
W000806	40	W003051	105	W009033	129	W013007	13	W014084	17
W000807	40	W003057	106	W009034	129	W013008	13	W015001	24
W000809	129	W003062	101	W009035	129	W013009	13	W015002	24
W000813	48	W003066	141	W009036	141	W013010	11	W015003	25
W000814	48	W003068	102	W009037	139	W013011	13	W015004	25
W000815	48	W003069	103	W009038	137	W013012	10	W015005	25
W000824	39	W003070	103	W009039	141	W013013	13	W015006	26
W000825	48	W003071	103	W009040	130	W013015	10	W015007	26
W000828	48	W003072	100	W009044	138	W013020	11	W015008	26
W000832	40	W003078	101	W009045	130	W013022	9	W015009	25
W000833	39	W003200	108	W009062	130	W013026	9	W015011	26
W000837	44	W003201	108	W009064	133	W013027	9	W015012	26
W000839	41	W003300	98	W011001	2	W013028	12	W015013	26
W000839	42	W003302	98	W011002	2	W013029	12	W015014	24
W000848	46	W003304	98	W011003	4	W014001	18	W015015	25
W000855	47	W003306	97	W011004	3	W014002	18	W015023	25
W000900	49	W003307	97	W011005	3	W014003	18	W015027	24
W000901	50	W003308	97	W011006	3	W014004	18	W016001	30
W001300	64	W003309	97	W011007	2	W014005	15	W016002	30
W001301	59	W003315	98	W011008	4	W014006	18	W016003	30
W001302	59	W003316	98	W011009	4	W014007	18	W016004	31
W001305	59	W003317	99	W011010	5	W014009	19	W016005	31
W001306	59	W003318	99	W011011	4	W014010	19	W016007	31
W001307	59	W003321	98	W011012	4	W014011	19	W016008	31
W001308	65	W003322	98	W011013	4	W014012	19	W016009	31
W001309	54	W003500	125	W011014	2	W014013	19	W016010	30
W001310	64	W003501	123	W011017	3	W014017	21	W016011	30
W001312	59	W003502	125	W011018	5	W014018	21	W016012	30
W001313	59	W003700	127	W011020	4	W014019	21	W016013	30
W001314	61	W004140	115	W011022	5	W014020	22	W016014	30
W001316	64	W004160	115	W011028	5	W014021	22	W016015	30
W001400	65	W004161	115	W011029	7	W014023	21	W016017	30
W001401	65	W004400	144	W011030	8	W014023	22	W016018	30
W001404	65	W004500	148	W011031	6	W014028	22	W016019	30
W001407	67	W004501	149					W016020	30

ITEM NO.	PAGE NO.	ITEM NO.	PAGE NO.	ITEM NO.	PAGE NO.	ITEM NO.	PAGE NO.	ITEM NO.	PAGE NO.
W021397	33	W031017	60	W031072	63	W032011	66	W041010	69
W021403	34	W031018	60	W031073	63	W032012	66	W041011	69
W021404	34	W031019	60	W031074	63	W032013	66	W041012	69
W021405	34	W031020	58	W031075	63	W032014	66	W041013	69
W021406	34	W031021	60	W031076	63	W032015	66	W041014	69
W021407	41	W031022	61	W031077	62	W032016	66	W041015	69
W021408	43	W031023	61	W031078	62	W032017	66	W041016	69
W021483	47	W031024	61	W031079	62	W032018	66	W041017	69
W022001	51	W031025	61	W031080	62	W032022	67	W041018	69
W022002	49	W031026	61	W031081	62	W032023	67	W041019	69
W022003	49	W031027	61	W031082	62	W032024	67	W041020	70
W022004	49	W031028	61	W031083	64	W032025	67	W041021	70
W022005	49	W031029	61	W031084	64	W032026	67	W041022	70
W022006	49	W031030	61	W031088	54	W032027	67	W041023	70
W022006	49	W031031	61	W031089	54	W032028	67	W041024	70
W022007	50	W031032	61	W031091	58	W032029	67	W041027	70
W022008	50	W031033	61	W031092	58	W032030	67	W041028	70
W022009	50	W031034	61	W031093	64	W032031	67	W041029	70
W022010	50	W031035	61	W031094	64	W032032	67	W041030	70
W022011	50	W031036	61	W031095	64	W032033	67	W041031	70
W022012	51	W031038	61	W031101	64	W032034	67	W041032	70
W022013	51	W031039	61	W031102	64	W032035	67	W041033	70
W022014	51	W031040	61	W031113	55	W032036	67	W041035	70
W022015	51	W031041	60	W031137	55	W032037	67	W041038	72
W022016	51	W031042	60	W031138	55	W032045	66	W041039	72
W022017	51	W031043	60	W031139	56	W032046	66	W041041	72
W022018	51	W031044	60	W031140	54	W032047	66	W041042	72
W022019	50	W031045	60	W031176	57	W033001	118	W041046	72
W022030	51	W031046	60	W031177	57	W033001	118	W041047	72
W022031	51	W031047	62	W031178	57	W033002	118	W041049	72
W022032	51	W031048	62	W031182	57	W033002	118	W041050	72
W022033	51	W031049	62	W031183	57	W033003	118	W041051	72
W023001	52	W031050	62	W031184	57	W033003	118	W041052	72
W023002	52	W031051	62	W031222	63	W033004	118	W041053	72
W023003	52	W031052	62	W031223	63	W033004	118	W041060	72
W023004	52	W031053	62	W031224	63	W033005	118	W041061	72
W024001	52	W031054	62	W031225	63	W033005	118	W041062	72
W024002	52	W031055	62	W031226	63	W033006	118	W041087	70
W031001	58	W031056	62	W031227	63	W033006	118	W041090	71
W031003	58	W031059	62	W031228	63	W033007	118	W041091	71
W031004	58	W031060	62	W031229	63	W033007	118	W042001	73
W031005	58	W031061	62	W031230	63	W033008	118	W042002	73
W031006	58	W031062	62	W032001	66	W033008	118	W043001	73
W031007	58	W031063	66	W032002	66	W041001	69	W043002	73
W031008	58	W031064	63	W032003	66	W041002	69	W043003	73
W031009	58	W031065	63	W032004	66	W041003	69	W043004	73
W031010	58	W031066	63	W032005	66	W041004	69	W043005	73
W031011	58	W031067	63	W032006	66	W041005	69	W043006	73
W031012	58	W031068	63	W032007	66	W041006	69	W043007	73
W031013	58	W031069	63	W032008	66	W041007	69	W043008	73
W031014	58	W031070	63	W032009	66	W041008	69	W043009	73
W031015	58	W031071	63	W032010	66	W041009	69	W045001	72

ITEM NO.	PAGE NO.	ITEM NO.	PAGE NO.	ITEM NO.	PAGE NO.	ITEM NO.	PAGE NO.	ITEM NO.	PAGE NO.
W073239	94	W073308	95	W073383	97	W074037	86	W074089	87
W073240	94	W073309	95	W073385	97	W074038	86	W074090	87
W073241	94	W073310	95	W073386	97	W074039	86	W074091	87
W073242	94	W073311	95	W073387	97	W074040	86	W074092	88
W073243	94	W073312	95	W073388	97	W074041	86	W074093	88
W073244	94	W073313	95	W073433	96	W074042	87	W074094	88
W073245	94	W073314	95	W073435	96	W074043	87	W074095	88
W073246	94	W073315	95	W073437	96	W074044	87	W074096	88
W073247	94	W073316	95	W073439	96	W074045	87	W074097	88
W073248	94	W073317	95	W073442	96	W074046	87	W074098	88
W073249	94	W073318	95	W073444	96	W074047	87	W074099	88
W073250	94	W073319	95	W073445	96	W074048	87	W074100	88
W073251	94	W073320	95	W073447	96	W074049	87	W074101	88
W073252	94	W073321	95	W073448	96	W074050	87	W074102	88
W073253	94	W073322	95	W073449	96	W074051	87	W074103	88
W073254	94	W073323	95	W073450	96	W074052	87	W074104	88
W073255	94	W073324	96	W074001	86	W074053	87	W074105	88
W073256	94	W073325	96	W074002	86	W074054	87	W074106	88
W073257	94	W073327	96	W074003	86	W074055	87	W074107	88
W073259	94	W073329	96	W074004	86	W074056	87	W074108	88
W073260	94	W073331	96	W074005	86	W074057	87	W074109	88
W073261	94	W073333	96	W074006	86	W074058	87	W074110	88
W073262	94	W073336	96	W074007	86	W074059	87	W074111	88
W073263	94	W073338	96	W074008	86	W074060	87	W074112	88
W073264	94	W073339	96	W074009	86	W074061	87	W074113	88
W073265	94	W073341	96	W074010	86	W074062	87	W074114	88
W073282	93	W073342	96	W074011	86	W074063	87	W074115	88
W073283	93	W073343	96	W074012	86	W074064	87	W074116	88
W073284	93	W073344	96	W074013	86	W074065	87	W074117	88
W073285	93	W073345	97	W074014	86	W074066	87	W074118	88
W073286	93	W073346	97	W074015	86	W074067	87	W074119	88
W073287	93	W073348	97	W074016	86	W074068	87	W074120	88
W073288	93	W073350	97	W074017	86	W074069	87	W074121	88
W073289	93	W073352	97	W074018	86	W074070	87	W074122	88
W073290	93	W073354	97	W074019	86	W074071	87	W074123	88
W073291	93	W073357	97	W074020	86	W074072	87	W074124	88
W073292	93	W073359	97	W074021	86	W074073	87	W074125	88
W073293	93	W073360	97	W074022	86	W074074	87	W074126	88
W073294	93	W073362	97	W074023	86	W074075	87	W074127	88
W073295	93	W073363	97	W074024	86	W074076	87	W074128	88
W073296	93	W073364	97	W074025	86	W074077	87	W074129	88
W073297	93	W073365	97	W074026	86	W074078	87	W074130	88
W073298	95	W073366	96	W074027	86	W074079	87	W074131	88
W073299	95	W073367	96	W074028	86	W074080	87	W074132	88
W073300	95	W073368	97	W074029	86	W074081	87	W074133	88
W073301	95	W073369	97	W074030	86	W074082	87	W074134	88
W073302	95	W073371	97	W074031	86	W074083	87	W074135	88
W073303	95	W073373	97	W074032	86	W074084	87	W074136	88
W073304	95	W073375	97	W074033	86	W074085	87	W074137	88
W073305	95	W073377	97	W074034	86	W074086	87	W074138	88
W073306	95	W073380	97	W074035	86	W074087	87	W074139	88
W073307	95	W073382	97	W074036	86	W074088	87	W074140	88



ITEM NO.	PAGE NO.	ITEM NO.	PAGE NO.	ITEM NO.	PAGE NO.	ITEM NO.	PAGE NO.	ITEM NO.	PAGE NO.
W103005	118	W124017	151						
W103006	117	W124018	150						
W103007	117	W124054	153						
W103008	118	W133019	153						
W103008	118	W133020	153						
W103009	118	W133175	161						
W103009	118	W133176	161						
W111001	146								
W111002	146								
W111003	146								
W111004	146								
W111005	146								
W112001	145								
W112002	145								
W112003	145								
W112004	146								
W112007	145								
W112008	146								
W112011	145								
W113001	143								
W113002	143								
W113004	144								
W113005	144								
W113006	144								
W114001	143								
W114002	143								
W114003	143								
W114004	143								
W114005	143								
W114006	144								
W114007	144								
W114008	144								
W114009	144								
W114010	144								
W114011	144								
W114012	144								
W114013	144								
W114013	144								
W114014	145								
W114015	145								
W114016	145								
W114017	144								
W114018	144								
W114019	144								
W114020	144								
W121001	148								
W121002	148								
W121003	148								
W121004	148								
W124003	152								
W124004	151								
W124015	150								



A series of 20 horizontal dashed lines for writing.

A series of 25 horizontal dashed lines for writing.



amazon.com ebay Aliexpress

Available on Amazon, Ebay and Aliexpress!



## WORKPRO®

Hangzhou Great Star Industrial Co., Ltd.  
Add: No.35-37 Jiujuan Road, jianggan District, Hangzhou, China, 310019  
Tel: (00)86-571-81601388 Fax: (00)86-571-81601234  
E-mail: [marketing@greatstartools.com](mailto:marketing@greatstartools.com)  
[www.workprotools.com](http://www.workprotools.com)

Great Star Industrial USA, LLC  
9836 Northcross Center Court, Suite A Huntersville, NC 28078  
Tel: 888-452-1213

201905-A5-06

WORKPRO® is a trademark of Hangzhou Great Star Industrial Co., Ltd.



## X-ON Electronics

Largest Supplier of Electrical and Electronic Components

*Click to view similar products for [Tool Kits & Cases](#) category:*

*Click to view products by [Workpro](#) manufacturer:*

Other Similar products are found below :

[217434-1](#) [4263](#) [1055420-1](#) [11-18-3023](#) [63902-3270](#) [63860-8170](#) [856600-2](#) [690372163](#) [11-40-3247](#) [63883-2870](#) [63901-5670](#) [63866-1070](#)  
[63863-5070](#) [63892-7370](#) [11-18-3209](#) [63860-4070](#) [63881-0970](#) [A0403641](#) [11-18-3040](#) [63865-2070](#) [63910-1470](#) [63861-5070](#) [63850-7470](#)  
[11-18-3201](#) [63910-7570](#) [FM 0501 146](#) [63883-0670](#) [63830-0070](#) [63902-9170](#) [11-18-3147](#) [11-18-3079](#) [63883-2670](#) [63900-1770](#) [11-18-3190](#)  
[63912-4770](#) [63911-5270](#) [63895-1070](#) [63860-1470](#) [63850-6070](#) [1-69411-3](#) [63852-9270](#) [63802-6270](#) [63902-4870](#) [11-18-3202](#) [63852-9170](#)  
[63850-1070](#) [63830-0170](#) [63910-2870](#) [11-18-3010](#) [63820-7070](#)