

WORKPRO®



2019 PRODUCTS CATALOG

CUTTING TOOLS FASTENING TOOLS HOLDING TOOLS STRIKING TOOLS
FINISHING TOOLS MEASURING TOOLS ELECTRICAL TOOLS PLUMBING TOOLS STORAGES
TOOL SETS AUTOMOTIVE TOOLS POWER TOOLS & ACCESSORY LASER TOOLS

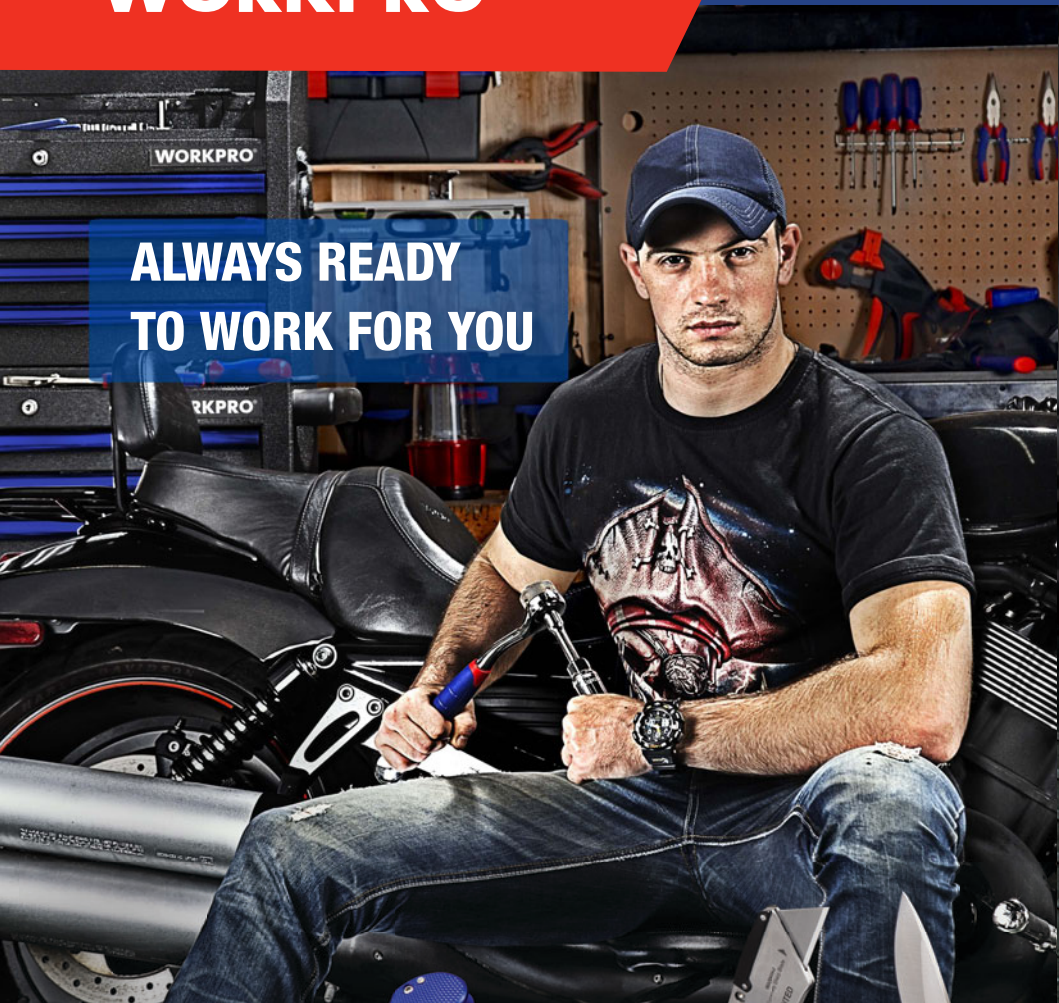
WORKPRO[®]

WORKPRO - a brand developed by GreatStar especially for home users and DIYers. In the last 25 years with a lot of studies and testings we manufactured lots of products. Now a broad variety of tools specifically designed for daily life is ready - WORKPRO. We will continue to design products with superior features and you will always find what you need here.



WORKPRO®

**ALWAYS READY
TO WORK FOR YOU**



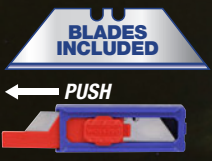
QUICK-CHANGE FOLDING UTILITY KNIFE WITH DETACHABLE LED LIGHT

NEW

★**STOCK**

No. W011033

- Anodized aluminum handle with comfort grip
- Foldable design, easily folds to a compact size to fit in pocket
- Rope cutter
- Quick-change blade mechanism
- Razor-sharp tempered SK5 blade
- Accepts all standard utility knife blade
- With detachable LED light



QUICK CHANGE



No. W011030

QUICK-CHANGE MINI FOLDING UTILITY KNIFE

NEW

★**STOCK**

QUICK CHANGE



- Anodized aluminum handle
- Foldable design, easily folds to a compact size to fit in pocket
- Quick-change blade mechanism
- Razor-sharp tempered SK5 blade
- Accepts all standard utility knife blade



QUICK-CHANGE FOLDING UTILITY KNIFE WITH WIRE STRIPPER

NEW

★**STOCK**

No. W011034



With wire stripper for the AWG 10-22

- Anodized aluminum handle with comfort grip
- Foldable design, easily folds to a compact size to fit in pocket
- Rope cutter
- Quick-change blade mechanism
- Razor-sharp tempered SK5 blade
- Accepts all standard utility knife blade
- With wire stripper for the AWG 10-22



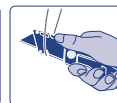
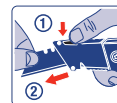
No. W011031

RETRACTABLE FOLDING UTILITY KNIFE WITH BLADE STORAGE

NEW

★**STOCK**

- Anodized aluminum handle with comfort grip
- Foldable design, easily folds to a compact size to fit in pocket
- Rope cutter
- Quick-change blade mechanism
- Razor-sharp tempered SK5 blade
- Accepts all standard utility knife blade



NEW

HEAVY DUTY FIXED BLADE UTILITY KNIFE

No. W013028

★**STOCK**

- Razor-sharp tempered SK5 blade
- Durable zinc alloy housing
- Comfort, anti-slip soft grip
- Fixed blade for more cutting power
- Built-in blade chamber stored up to 5 blades
- Accepts all standard utility knife blades

Quick change blade, NO tools required



x 10

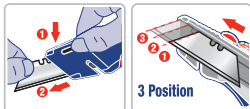
No. W013029

HEAVY DUTY RETRACTABLE UTILITY KNIFE

NEW

★**STOCK**

QUICK CHANGE



- Razor-sharp tempered SK5 blade
- Durable zinc alloy housing with twine cutter
- Multi-position retractable blade for all purpose cutting
- Quick-change blade mechanism
- Built-in blade chamber stored up to 5 blades



x 10



No. W011012

★**STOCK**

QUICK-CHANGE FOLDING UTILITY KNIFE



W011013

W011012
Mini

- Stainless steel and polished hardwood handle
- Quick-change mechanism

No. W011009

★**STOCK
HOT**

FOLDING UTILITY KNIFE WITH BLADE STORAGE



W011009

W011008
Mini

- Quick-change mechanism
- Folding utility knife blade
- With five extra blades stored in handle
- Lightweight ABS handle with blade storage
- Stainless steel belt clip

No. W011020

MINI FOLDING UTILITY KNIFE



W011020

| | |
|---------|-----|
| W011020 | 1PC |
| W000009 | 2PC |

★**STOCK
HOT**



W000009

- Stainless steel construction for durability and anti-corrosion
- Quick blade change mechanism
- Use to cut and score all types of surfaces
- Accepts all standard utility knife blades
- Features pocket clip, closed 4-inch

No. W011003

★**STOCK
HOT**

MINI ALUMINUM FOLDING UTILITY KNIFE



- Patented quick-change mechanism
- Lightweight anodized aluminum handle
- Includes belt clip for easy access
- Accepts all standard utility knife blades

No. W011011

★**STOCK
HOT**

TWIN BLADE FOLDING UTILITY KNIFE



- Fine blade knife and utility knife
- Aluminum handle
- Patented quick-change mechanism

RETRACTABLE FOLDING UTILITY KNIFE

No. W011007



Quick-change mechanism

- Blades locked in 4 extended positions
- Quick-change mechanism
- Anodized aluminum handle
- Accepts all standard utility knife blades

Pocket clip
Anodized aluminum handle

No. W011001

★**STOCK**
HOT

FOLDING UTILITY KNIFE



- Durable high impact plastic handle with pocket clip
- Zinc-alloy structure
- Patented quick-change mechanism
- Accepts all standard utility knife blades
- With 10 extra blades

No. W011002

★**STOCK**

FOLDING UTILITY KNIFE



- Patented quick-change mechanism
- Lightweight anodized aluminum handle
- Includes belt clip for easy access
- Accepts all standard utility knife blades

No. W011014

FOLDING UTILITY KNIFE



- Uses standard utility knife blades
- Folds closed for safety, locks open
- Quick-change mechanism

AUTO-LOADING RETRACTABLE UTILITY KNIFE

No. W013012

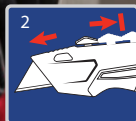
- Die-cast aluminum body with comfort grip
- Blades locks in 3 extended positions or fully closed
- Extra blades stored in handle
- Hinge mechanism for easy links



1. Release and remove the old blade



2. Engage new blade and move forward to load new blade



3. Quick-open to refill blades (5 blades capacity)

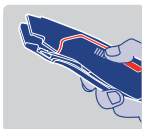


5 BLADES INCLUDED

No. W013015

★STOCK

QUICK-CHANGE UTILITY KNIFE

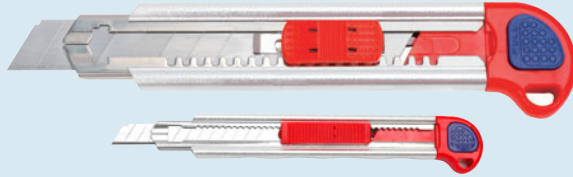


x3

- Die-cast aluminum body with comfort grip
- 3PC extra blades stored in handle

AUTO-LOADING ALUMINUM SNAP-OFF KNIFE

★**STOCK**



5 BLADES INCLUDED

| | |
|---------|------|
| W012010 | 18mm |
| W012009 | 9mm |

- Lightweight anodized aluminum construction
- Smooth sliding mechanism
- Removable blade snapper included in knife cap
- Stainless steel blade dispenser cartridge resists rust
- Automatic reload action

No. W012007

★**STOCK**

PLASTIC SNAP-OFF KNIFE



W012007
9mm



W012008
18mm

- Positive blade auto-lock
- 3 or 5 self-loading blades included
- Stainless steel flute

No. W012011

★**STOCK**

HEAVY DUTY SNAP-OFF KNIFE



W012011
9mm



W012012
18mm

- Zinc-alloy construction, stainless steel cartridge
- Ergonomic cushion grip
- Auto-reload blade system
- 3PC or 5PC snap-off blades included

No. W012003

★**STOCK**

10PC 9MM/18MM SNAP-OFF KNIFE BLADES



W012003
9mm



W012004
18mm

- Razor-sharp tempered SK5 blades
- Fits most 9mm /18mm snap-off knives

No. W012005

★**STOCK**

SNAP-OFF KNIFE



W012005
9mm



W012006
18mm

- Snap-off used blades for a new cutting edge
- High impact ABS housing

16-IN-1 MULTI TOOL

No. W014070

- Stainless steel handle and components
- Include: long nose pliers, wire cutter, curved jaw pliers, hang hole, can opener, wire stripper, phillips screwdriver, serrated blade, saw, hardwire cutters, knife, file, slotted screwdriver (M), reamer, bottle opener, slotted screwdriver (L)

★STOCK

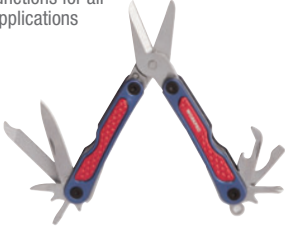


No. W014001

★STOCK

10-IN-1 MINI MULTI-PURPOSE SCISSORS

- Stainless steel blades and tools
- Multi-functions for all basic applications



No. W014002

★STOCK

8-IN-1 MULTI-FUNCTION STRIPPER

- Quickly strips 12-18 AWG wire
- Stainless steel blade with aluminum textured handle for non-slip usage



No. W014003

★STOCK

9-IN-1 MULTI-FUNCTION SNIPS

- Stainless steel blades and tools
- Heavy duty stainless steel handle with rubber grip
- Cuts: leather, rope, vinyl, thin wire, twine, light plastics, paper and more
- Bonus pouch



No. W014004

★STOCK

15-IN-1 MULTI-PURPOSE PLIERS

- Precision punched
- Machined surface
- Stainless steel components
- Compact folding design
- Ideal selection for general purpose use
- Includes nylon pouch



No. W014006

★STOCK

15-IN-1 ALUMINUM HANDLE MULTI TOOL

- Lightweight aluminum handle for strength & durability
- Stainless steel components
- Spring loaded action for easy operation
- Foldable design for easy storage



No. W014007

★STOCK

15-IN-1 MULTI-FUNCTION TOOL

- Stainless steel blades and tools
- Multi-functions for all basic applications



No. W000314

★STOCK

2PC MULTI-PURPOSE TOOL SET



- 15-in-1 multi-purpose tool
- 3" one handed opening knife
- Durable pouch included

No. W000302

★STOCK

4PC MULTI TOOL SET



- 12-in-1 multi-purpose tool
- Mini multi-purpose tool
- 2-1/8" one handed opening knife
- 2-5/8" one handed opening knife
- Durable pouch included

W014061 12"

No. W000316

★STOCK

3PC MULTI-PURPOSE TOOL SET



- 15-in-1 multi-purpose tool
- Mini multi-purpose tool
- Stainless steel components
- Compact folding design
- Ideal selection for general purpose use
- Includes nylon pouch

No. W000304

★STOCK

2PC MULTI-FUNCTION PLIERS AND QUICK-RELEASE KNIFE



- 12-in-1 multi-function pliers
- Stainless steel components
- Compact folding design
- Ideal selection for general purpose use

No. W000317

3PC MULTI-FUNCTION TOOL SET

- 12-in-1 multi-function pliers
- 1PC 9-in-1 multi-function pliers
- 5-in-1 multi-purpose tool
- Compact folding design for convenient storage and transportation
- Stainless steel blades and tools
- Multi-functions for all basic applications



No. W014023

★**STOCK**

3.5" FOLDING KNIFE



- Rust-resistant stainless steel blade
- Anodized aluminum handle
- Cord cutter

No. W014031

★**STOCK**

3" FOLDING KNIFE WITH BITS



- Rust-resistant stainless steel blade
- Rubberized coating handle with bits holder
- Black finish
- 4PC double head bits included

No. W014020

★**STOCK**

3.5" FOLDING KNIFE

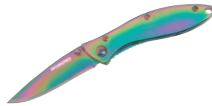


- Rust-resistant stainless steel blade
- Pocket clip included

No. W014021

★**STOCK**

2-3/4" FOLDING KNIFE



- Stainless steel blade
- Titanium coated
- Belt clip included

No. W014028

★**STOCK**

TACTICAL CAMO KNIFE



- Rust-resistant stainless steel blade
- Pocket clip included

No. W014029

★**STOCK**

BLACK FOLDING KNIFE



- Rust-resistant stainless steel blade
- Pocket clip included

No. W014030

★**STOCK**

2-3/4" FOLDING KNIFE



- Rust-resistant stainless steel blade
- Good quality wood handle

No. W014051

★**STOCK**

10" ROGUE KNIFE



- Rust-resistant stainless steel blade
- Comfortable grip handle
- Full tang
- Bonus durable pouch

No. W014047

★**STOCK**

TACTICAL MACHETE

- Sharp steel blade with saw back
- With black finish
- Comfortable grip with lanyard hole
- Bonus nylon sheath



No. W014048

★**STOCK**

TACTICAL MACHETE

- Sharp steel blade with saw back
- With black finish
- Comfortable grip with lanyard hole
- Bonus nylon sheath



10" MULTI FUNCTION KITCHEN SCISSORS

NEW

★**STOCK**

No. W015027

- Strong construction, corrosion resistant heavy duty stainless steel
- Bi-material ergonomic non-slip soft grip
- Sharp blades & slip-proof micro-serrated edge
- Multifunction & saving time-Ideal for cutting meat & chicken, crap, scaling fish, peeling, removing caps, and cracking nuts

Cut meat & vegetable



No. W015001 ★**STOCK**

CLASSIC 8" SCISSORS



- Stainless steel blades
- Comfort-grip handle

No. W015002 ★**STOCK**

CLASSIC 8" SCISSORS



- Stainless steel blades
- Comfort-grip handle

No. W015014 ★**STOCK**

HEAVY DUTY SCISSORS



- Stainless steel blades
- Multi-purpose cutting
- Perfect for any task, the handle is molded to your hand for extra comfort

No. W015006

★**STOCK**

RIGHT CUT AVIATION TIN SNIP

- Chrome-vanadium steel
- Serrated cutting edges prevent materials from slipping during use
- Ergonomic comfort grip handle



No. W015013

RIGHT CUT AVIATION TIN SNIP

- Chrome-vanadium steel
- Serrated cutting edges prevent materials from slipping during use
- Ergonomic comfort grip handle



No. W015007

★**STOCK**

LEFT CUT AVIATION TIN SNIP

- Chrome-vanadium steel
- Serrated cutting edges prevent materials from slipping during use
- Ergonomic comfort grip handle



No. W015011

LEFT CUT AVIATION TIN SNIP

- Chrome-vanadium steel
- Serrated cutting edges prevent materials from slipping during use
- Ergonomic comfort grip handle



No. W015008

★**STOCK**

STRAIGHT AVIATION TIN SNIP

- Chrome-vanadium steel
- Serrated cutting edges prevent materials from slipping during use
- Ergonomic comfort grip handle



No. W015012

STRAIGHT AVIATION TIN SNIP

- Chrome-vanadium steel
- Serrated cutting edges prevent materials from slipping during use
- Ergonomic comfort grip handle



No. W017001

★STOCK

8" BOLT CUTTER

- 65Mn steel jaws
- Jaws hardened to HRC56-60 for longer life
- Strong handle with rubber grips



No. W017002

★STOCK

8" BOLT CUTTER

- 65Mn steel jaws
- Jaws hardened to HRC56-60 for longer life



No. W017009

★STOCK

BOLT CUTTER

- Drop forged chrome-molybdenum steel jaws
- Ideal for cutting bolts, rods, rivets and chains
- Strong tubular handle with rubber grips



| | | |
|------------|------------|------------|
| W017009 | W017010 | W017011 |
| 24"(600mm) | 30"(760mm) | 36"(900mm) |

No. W017003

★STOCK

BOLT CUTTER

- Drop forged chrome-molybdenum steel jaws
- Ideal for cutting bolts, rods, rivets and chains
- Strong tubular handle with rubber grips



| | | |
|------------|------------|------------|
| W017003 | W017004 | W017005 |
| 12"(300mm) | 14"(350mm) | 18"(460mm) |
| W017006 | W017007 | W017008 |
| 24"(600mm) | 30"(750mm) | 36"(900mm) |

No. W017012

★STOCK

BOLT CUTTER

- Drop forged chrome-molybdenum steel jaws
- Ideal for cutting bolts, rods, rivets and chain
- Strong tubular handle with rubber grips



| | |
|------------|------------|
| W017012 | W017013 |
| 24"(600mm) | 30"(750mm) |



No. W016038

★**STOCK**

MITRE BOX SAW

- Precision ground teeth, 12TPI
- Ergonomic comfort rubber grip handle



| | | |
|---------|---------|---------|
| W016038 | W016039 | W016040 |
| 12" | 14" | 16" |

No. W016010

★**STOCK**

WOOD HANDLE HAND SAW

- Precision double ground teeth, 7TPI
- Comfortable wood handle



| | | |
|---------|---------|---------|
| W016010 | W016011 | W016012 |
| 14" | 16" | 18" |
| W016013 | W016014 | W016015 |
| 20" | 22" | 24" |

No. W016017

★**STOCK**

HAND SAW

- Punched teeth, 7TPI



| | | |
|---------|---------|---------|
| W016017 | W016018 | W016019 |
| 14" | 16" | 18" |
| W016020 | W016021 | W016022 |
| 20" | 22" | 24" |

No. W016024

HAND SAW

- Triple ground teeth, 7TPI
- Soft grip handle



| | | |
|---------|---------|---------|
| W016024 | W016025 | W016026 |
| 14" | 16" | 18" |
| W016027 | W016028 | W016029 |
| 20" | 22" | 24" |

No. W016001

★**STOCK**

6"(152MM) WALLBOARD SAW

- Hardened and tempered 65Mn blade for strength and durability
- Super-sharp cross ground teeth for fast cutting in drywall, wood or plastic



| | |
|---------|---------|
| W016001 | W016002 |
| 6" | 6" |

No. W016003

★**STOCK**

ALUMINUM FRAME MINI HACKSAW



- Aluminum alloy frame, ergonomic rubber handle
- For cutting in hard-to-reach places
- 10"(250mm) bi-metal blade

WORKPRO®

FASTENING TOOLS

SCREWDRIVER

HEX KEYS

HAND RIVETER

STAPLE GUN

CAULKING GUN



No. W021078

PHILLIPS SCREWDRIVER

- Chrome-vanadium steel blade, chrome-plated
- Magnetic tip
- Ergonomic clear PVC grip handle for comfort



| | | |
|---------|------------|--------|
| W021078 | PH2X1-1/2" | ★STOCK |
| W021079 | PH0X3" | |
| W021080 | PH0X4" | |
| W021081 | PH0X6" | ★STOCK |
| W021083 | PH1X3" | ★STOCK |
| W021084 | PH1x4" | ★STOCK |
| W021085 | PH1x6" | ★STOCK |
| W021089 | PH2x4" | ★STOCK |
| W021090 | PH2x6" | ★STOCK |
| W021094 | PH3x6" | ★STOCK |
| W021095 | PH3x8" | |

| | | |
|---------|-----------|--------|
| W021373 | PH2x38mm | ★STOCK |
| W021374 | PH0x75mm | ★STOCK |
| W021375 | PH0x100mm | ★STOCK |
| W021376 | PH0x150mm | ★STOCK |
| W021378 | PH1x75mm | ★STOCK |
| W021379 | PH1x100mm | ★STOCK |
| W021380 | PH1x150mm | ★STOCK |
| W021384 | PH2x100mm | ★STOCK |
| W021385 | PH2x150mm | |
| W021389 | PH3x150mm | |
| W021390 | PH3x200mm | |

No. W021103

TORX SCREWDRIVER

| | |
|---------|--------|
| W021103 | T10x4" |
| W021104 | T15x4" |
| W021105 | T20x4" |
| W021106 | T25x4" |
| W021107 | T30x4" |



- Chrome-vanadium steel blade, chrome-plated
- Magnetic tip
- Ergonomic clear PVC grip handle for comfort

No. W021108

SQUARE SCREWDRIVER

| | |
|---------|----------|
| W021108 | T10x4" |
| W021109 | T15x4" |
| W021110 | T20x4" |
| W021111 | T25x4" |
| W021403 | S0x100mm |
| W021404 | S1x100mm |
| W021405 | S2x100mm |
| W021406 | S3x100mm |



- Chrome-vanadium steel blade, chrome-plated
- Magnetic tip
- Ergonomic clear PVC grip handle for comfort

No. W021112

SLOTTED SCREWDRIVER



- Chrome-vanadium steel blade, chrome-plated
- Magnetic tip
- Ergonomic clear PVC grip handle for comfort

| | | |
|---------|-------------|--------|
| W021112 | 1/4"x1-1/2" | ★STOCK |
| W021113 | 1/8"x3" | ★STOCK |
| W021114 | 1/8"x4" | ★STOCK |
| W021118 | 3-16"x3" | ★STOCK |
| W021119 | 3/16"x4" | ★STOCK |
| W021120 | 3/16"x6" | ★STOCK |
| W021121 | 3/16"x8" | ★STOCK |
| W021124 | 1/4"x4" | ★STOCK |
| W021125 | 1/4"x6" | ★STOCK |
| W021126 | 1/4"x8" | ★STOCK |
| W021129 | 5/16"x6" | ★STOCK |
| W021130 | 5/16"x8" | ★STOCK |
| W021270 | 6x38mm | ★STOCK |
| W021271 | 3x75mm | ★STOCK |
| W021272 | 3x100mm | ★STOCK |
| W021273 | 3x150mm | ★STOCK |
| W021276 | 5x75mm | ★STOCK |
| W021277 | 5x100mm | ★STOCK |
| W021278 | 5x150mm | ★STOCK |
| W021279 | 5x200mm | ★STOCK |
| W021282 | 6x100mm | ★STOCK |
| W021283 | 6x150mm | ★STOCK |
| W021284 | 6x200mm | ★STOCK |
| W021287 | 8x150mm | ★STOCK |
| W021288 | 8x200mm | ★STOCK |

No. W021133

PHILLIPS SCREWDRIVER



- Chrome-vanadium steel blade, chrome-plated
- Magnetic tip
- Ergonomic clear PVC grip handle for comfort

| | | |
|---------|------------|--------|
| W021133 | PH2x1-1/2" | ★STOCK |
| W021134 | PH0x3" | ★STOCK |
| W021135 | PH0x4" | ★STOCK |
| W021138 | PH1x3" | ★STOCK |
| W021139 | PH1x4" | ★STOCK |
| W021140 | PH1x6" | ★STOCK |
| W021144 | PH2x4" | ★STOCK |
| W021145 | PH2x6" | ★STOCK |
| W021146 | PH2x8" | ★STOCK |
| W021149 | PH3x6" | ★STOCK |
| W021150 | PH3x8" | ★STOCK |
| W021291 | PH2x38mm | ★STOCK |
| W021292 | PH0x75mm | ★STOCK |
| W021293 | PH0x100mm | ★STOCK |
| W021294 | PH0x150mm | ★STOCK |
| W021296 | PH1x75mm | ★STOCK |
| W021297 | PH1x100mm | ★STOCK |
| W021298 | PH1x150mm | ★STOCK |
| W021302 | PH2x100mm | ★STOCK |
| W021303 | PH2x150mm | ★STOCK |
| W021304 | PH2x200mm | ★STOCK |
| W021307 | PH3x150mm | ★STOCK |
| W021308 | PH3x200mm | ★STOCK |

No. W021001

SLOTTED SCREWDRIVER



- Chrome-vanadium blade
- Black magnetic tip
- Ergonomic comfort grip handle

| | | |
|---------|-------------|--------|
| W021001 | 1/4"x1-1/2" | ★STOCK |
| W021002 | 1/8"x3" | ★STOCK |
| W021003 | 1/8"x4" | ★STOCK |
| W021006 | 5/32"x4" | ★STOCK |
| W021007 | 3/16"x3" | ★STOCK |
| W021008 | 3/16"x4" | ★STOCK |
| W021009 | 3/16"x6" | ★STOCK |
| W021013 | 1/4"x4" | ★STOCK |
| W021014 | 1/4"x6" | ★STOCK |
| W021015 | 1/4"x8" | ★STOCK |
| W021018 | 5/16"x6" | ★STOCK |
| W021019 | 5/16"x8" | ★STOCK |
| W021215 | 6x38mm | ★STOCK |
| W021216 | 3x75mm | ★STOCK |
| W021217 | 3x100mm | ★STOCK |
| W021220 | 4x100mm | ★STOCK |
| W021221 | 5x75mm | ★STOCK |
| W021222 | 5x100mm | ★STOCK |
| W021223 | 5x150mm | ★STOCK |
| W021227 | 6x100mm | ★STOCK |
| W021228 | 6x150mm | ★STOCK |
| W021229 | 6x200mm | ★STOCK |
| W021232 | 8x150mm | ★STOCK |
| W021233 | 8x200mm | ★STOCK |

No. W021022

PHILLIPS SCREWDRIVER



- Chrome-vanadium blade
- Black magnetic tip
- Ergonomic comfort grip handle

| | | |
|---------|------------|--------|
| W021022 | PH2x1-1/2" | ★STOCK |
| W021023 | PH0x3" | ★STOCK |
| W021024 | PH0x4" | ★STOCK |
| W021027 | PH1x3" | ★STOCK |
| W021028 | PH1x4" | ★STOCK |
| W021029 | PH1x6" | ★STOCK |
| W021033 | PH2x4" | ★STOCK |
| W021034 | PH2x6" | ★STOCK |
| W021035 | PH2x8" | ★STOCK |
| W021038 | PH3x6" | ★STOCK |
| W021039 | PH3x8" | ★STOCK |
| W021236 | PH2x38mm | ★STOCK |
| W021237 | PH0x75mm | ★STOCK |
| W021238 | PH0x100mm | ★STOCK |
| W021241 | PH1x75mm | ★STOCK |
| W021242 | PH1x100mm | ★STOCK |
| W021243 | PH1x150mm | ★STOCK |
| W021247 | PH2x100mm | ★STOCK |
| W021248 | PH2x150mm | ★STOCK |
| W021249 | PH2x200mm | ★STOCK |
| W021252 | PH3x150mm | ★STOCK |
| W021253 | PH3x200mm | ★STOCK |
| | | |
| | | |

No. W000807

★**STOCK**

18PC SCREWDRIVER SET WITH RACK

SAE



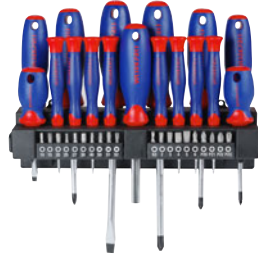
- Chrome-vanadium blade
- Black magnetic tips
- Ergonomic designed handle
- 10PC precision screwdrivers: PH0, PH00, PH000, 1/16", 3/32", 1/8", 5/64", T7, T8, T9
- 8PC screwdrivers: 1/4"x1-1/2", 1/4"x4", 3/16"x4", 5/16"x6", PH2x1-1/2", PH1x4", PH2x4", PH3x6"
- 1PC plastic rack

No. W000803

★**STOCK**

37PC SCREWDRIVER SET WITH RACK

SAE



- 8PC screwdrivers, SL5/16"x6", SL3/16"x3", SL1/4"x1-1/2", PH2x1-1/2", PH3x6", PH2x4", PZ2x4", PZ1x4"
- 8PC precision screwdrivers: SL5/64", SL3/32", SL1/8";PH00, PH0, T7, T8, T9
- 1PC magnetic bits holder
- 20PC bits:1/8",5/32",3/16",1/4"; PH0,PH1x2, PH2x2,PH3; T10,T15,T20,T25; S1,S2,S3; H3/32", H1/8", H3/16"

No. W000806

★**STOCK**

100PC SCREWDRIVER SET WITH RACK

SAE



- 8PC precision screwdrivers
- 1PC magnetic bits holder
- 22PC screwdrivers:1/8"x3", 5/32"x4", 3/16"x3", 3/16"x4", 3/16"x6", 1/4"x4", 1/4"x6", 5/16"x6"; PH0x3", PH0x4", PH1x3", PH1x4", PH1x6", PH2x4", PH2x6", PH3x6"; T10x4", T15x4", T20x4"; S0x4", S1x4", S2x4"
- 60PC bits
- 4" awl
- 2PC Z-bits: PH2&SL6, PH1&SL5
- 6PC socket nuts

No. W000832

★**STOCK**

45PC SCREWDRIVER SET WITH RACK

SAE



- Comfort non slip molded cushion grip
- Super convenient organizing holder included
- Magnetic tip helps aid in securing the screw tight places
- 7pc screwdriver:1/8"x3",3/16"x4",1/4"x5", 5/16"x6",PH0x3",PH1x4",PH2x5"
- 1pc screwdriver bits holder
- 10pc precision screwdriver:T5,T6,T7,T8,T9,T10,PH0,PH0,1/8",3/32"
- 16pc bits:1/8",5/32",3/16",1/4";PH0,PH1,PH2,PH, H3/16,H1/4,T10,T15,T20,T25,T27,T30,AD
- 1pc bit adaptor
- 9pc 1/4" sockets:3/16",1/4",9/32",3/8",7/16", 15/32",1/2"
- 1pc plastic rack

SCREWDRIVER BIT SET

No. W000848

- 20 x Screwdriver Bits, 25mm, Cr-V, Sandblast
- Plastic Bit holder

NEW

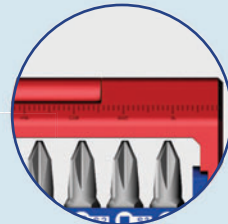
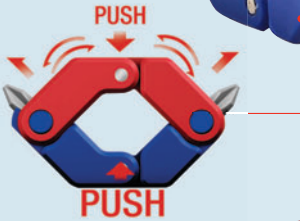
★**STOCK**

Metric

20
PCS



- +
 -
 - +
 - +
- Phillips Slotted Torx Pozi



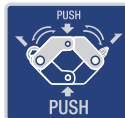
THE LEFT SIDE



THE RIGHT SIDE



Save space and could be easily carried around by storing in a blow molded case



PUSH



MAGNETIC



MAGNETIC

No. W000814

★STOCK

10-IN-1 RATCHETING QUICK-LOAD SCREWDRIVER SET



- Auto-locking, one handed bit loading locks virtually any 1/4" hex shank accessory
- Includes screwdriver blade holders.
- Rubberized, ergonomic grip gives higher torque output
- Contents include 5pc CR-V 4-1/2" double ended screwdriver shafts-SL4-5&SL6-8; PH1&PH3; PH2&SQ2; SQ1& SQ3; T10&T15



No. W000828

★STOCK

6-IN-1 TELESCOPIC QUICK-LOAD SCREWDRIVER SET



- 3PC S2 9" double ended screwdriver shafts PH2-1/4", PH1-3/16", S1-S2

No. W000802

★STOCK

6PC PRECISION SCREWDRIVER SET



- Chrome-vanadium blade
- Ergonomic comfort grip handle
- Size: Slotted: 5/64", 3/32", 1/8" Phillips: PH000, PH00, PH0

No. W000825



No. W000813

★STOCK

12-IN-1 QUICK-LOAD SCREWDRIVER SET



- Auto-locking, one handed bit loading locks virtually any 1/4" hex shank accessory
- Includes screwdriver blade holders.
- Rubberized, ergonomic grip gives higher torque output
- Contents include 6pc CR-V 4-1/2" double ended screwdriver shafts SL4-5&SL6-8; PH1&PH3; PH2&SQ2; SQ1& SQ3; T10&T15; T20&T25

No. W000815

★STOCK

14-IN-1 QUICK-LOAD PRECISION SCREWDRIVER SET



- Auto-locking, one handed bit loading locks virtually any 5/32" hex shank accessory
- Spinning cap allows for easier and quicker fastening; Rubberized, ergonomic grip gives higher torque output
- 7pc CR-V 3" double ended S/D shafts: PH000/ SL 1/16", PH00/ SL 5/64", PH0/ SL 3/32", PH1/ SL 1/8", T6/ T7, T8/T9, Hex 1/16"/ Hex 5/64

No. W022007

★STOCK

9PC FOLDING HEX KEY



- Light and strong aluminum structure handle
- Chrome-vanadium steel, hardened and tempered
- 5/64", 3/32", 7/64", 1/8", 9/64", 5/32", 3/16", 7/32", 1/4"

No. W022008

★STOCK

8PC FOLDING HEX KEY



- Light and strong aluminum structure handle
- Chrome-vanadium steel, hardened and tempered
- 1.5, 2, 2.5, 3, 4, 5, 6, 8mm

No. W022019

★STOCK

8PC FOLDING TORX KEY



- Light and strong aluminum structure handle
- Chrome-vanadium steel, hardened and tempered
- T8, T10, T15, T20, T25, T27, T30, T40

No. W022009

★STOCK

18PC SHORT ARM HEX KEY SET



- Chrome-vanadium steel, hardened and tempered
- 9PC metric hex size: 1.5, 2, 2.5, 3, 4, 5, 6, 8, 10mm
- 9PC torx hex size: T10, T15, T20, T25, T27, T30, T40, T45, T50

No. W000901

★STOCK

29PC ALUMINUM HANDLE HEX KEY SET



- Aluminum handles, chrome-vanadium steel keys
- 8PC folding metric hex keys
- 12PC folding screwdriver and socket set
- 9PC folding SAE hex keys

No. W022010

★STOCK

18PC SHORT ARM HEX KEY SET



- Chrome-vanadium steel, hardened and tempered
- 9PC Metric: 1.5, 2, 2.5, 3, 4, 5, 6, 8, 10mm
- 9PC SAE: 1/16", 5/64", 3/32", 1/8", 5/32", 3/16", 1/4", 5/16", 3/8"

No. W022011

★STOCK

18PC LONG ARM HEX KEY SET



- Chrome-vanadium steel, hardened and tempered
- 9PC Metric: 1.5, 2, 2.5, 3, 4, 5, 6, 8, 10mm
- 9PC SAE: 1/16", 5/64", 3/32", 1/8", 5/32", 3/16", 1/4", 5/16", 3/8"

No. W023004

★STOCK

10-1/2" ALUMINUM RIVETER



- Chrome-molybdenum jaws
- Aluminum alloy construction with ergonomic grip handle
- Spring loaded handle ejects rivet stem automatically
- Fits rivet size: 3/32", 1/8", 5/32" and 3/16"
- One wrench stored in handle

No. W023003

★STOCK

10" HAND RIVETER



- Chrome molybdenum jaws
- Steel construction with ergonomic grip handle
- Spring loaded handle ejects rivet stem automatically
- Fits rivet size: 3/32", 1/8", 5/32" and 3/16"
- One wrench stored in handle

No. W023001

★STOCK

STAPLE GUN



- Precision engineered structure provides a trouble-free performance
- Long lasting chrome-plated finish
- Easy push lockdown handle
- Solid steel mechanism with quick jam release

No. W023002

★STOCK

3-IN-1 STAPLE GUN SET



- 1x staple gun
- 500PC 8 x 1.2 x 11.3 staples
- 500PC 12mm staples
- 500PC 14mm nails
- 1 x handy storage case

No. W024001

★STOCK

CAULKING GUN



- All metal construction
- Comfortable pistol grip

No. W024002

★STOCK

CAULKING GUN WITH RATCHET



- Ratchet rotating construction
- Tip cutter function
- With seal puncture tool

2PC QUICK-RELEASE GROOVE JOINT PLIERS

No. W001309



Quick-release button for faster adjustments, press and slide button to adjust the lower jaw

- Press and slide button quickly to adjust the lower jaw
- All purpose jaw grips on round, flat, square and hex shapes
- More groove positions provide the optimum hand location for a better grip on the work piece
- Material: chrome-vanadium

| | | |
|---------|----------|--------|
| W001309 | 10" , 8" | ★STOCK |
| W001389 | 10" | ★STOCK |
| W001388 | 8" | ★STOCK |

No. W031140

10" V-JAW SELF-ADJUSTING GROOVE JOINT PLIERS

NEW

★STOCK

- Self-Adjusting Jaws can grip various bolt head shapes and sizes
- Ergonomically designed rubber handles provide a comfortable grip
- Fully automatic for true one-handed use
- Max. jaw opening: 1-11/16"(43mm)
- 2X Gripping power and 50% labor-saving



No. W031139

NEW

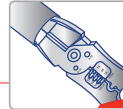
★**STOCK**

8" ALL PURPOSE LINESMAN PLIERS

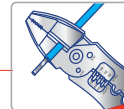
- The Multi-purpose built let you complete more tasks with one tool.
- High leverage design



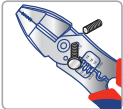
Linesman Pliers



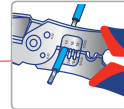
Finish Reaming



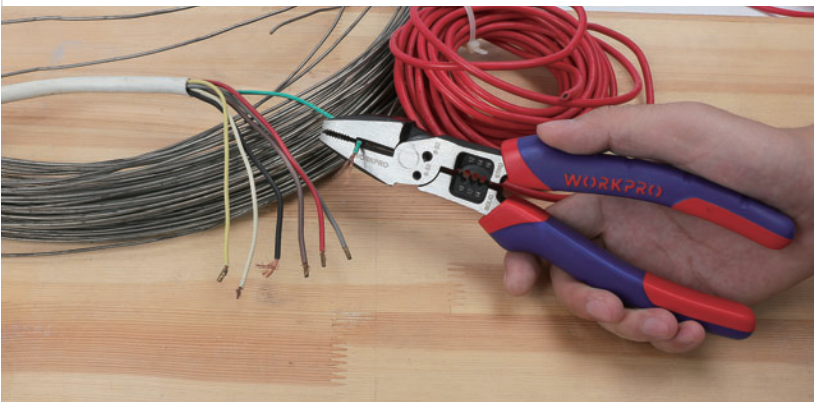
Wire and Cable Cutter



Bolt Cutter 6/32 8/32



Wire Stripper
Solid AWG 10 12 14
(5.2 3.3 2.0mm²)
Stranded AWG 12 14 16
(5.2 3.3 2.0mm²)



No. W031001

★STOCK

6"(160MM) LONG NOSE PLIERS



- Drop forged carbon steel with Ni-Fe coating for durability
- Bi-material comfort grip handle

W031002 8"(200mm)

No. W031003

★STOCK

6"(160MM) DIAGONAL PLIERS



- Drop forged carbon steel with Ni-Fe coating for durability
- Bi-material comfort grip handle

No. W031004

★STOCK

7"(180MM) HEAVY DUTY DIAGONAL PLIERS



- Drop forged carbon steel with Ni-Fe coating for durability
- Bi-material comfort grip handle

No. W031005

★STOCK

6"(160MM) LINESMAN PLIERS



- Drop forged carbon steel with Ni-Fe coating for durability
- Bi-material comfort grip handle

W031091 7"(180mm)

W031006 8"(200mm)

No. W031010

★STOCK

6"(160MM) END CUTTING PLIERS



- Drop forged carbon steel with Ni-Fe coating for durability
- Bi-material comfort grip handle

No. W031092

★STOCK

9"(230MM) LINESMAN PLIERS



- Drop forged carbon steel with Ni-Fe coating for durability
- Bi-material comfort grip handle

No. W031011

★STOCK

6"(160MM) STRIPPER PLIERS



- Drop forged carbon steel with Ni-Fe coating for durability
- Bi-material comfort grip handle

No. W031012

★STOCK

6"(160MM) FLAT NOSE PLIERS



- Drop forged carbon steel with Ni-Fe coating for durability
- Bi-material comfort grip handle

No. W031009

★STOCK

6"(160MM) BENT NOSE PLIERS



- Drop forged carbon steel with Ni-Fe coating for durability
- Bi-material comfort grip handle

No. W031007

★STOCK

6"(160MM) SLIP JOINT PLIERS



- Drop forged carbon steel with Ni-Fe coating for durability
- Bi-material comfort grip handle

W031008 8"(200mm)

No. W031013

★STOCK

8"(200MM) GROOVE JOINT PLIERS



- Drop forged carbon steel with Ni-Fe coating for durability
- Bi-material comfort grip handle

W031014 10"(250mm)

W031015 12"(300mm)

No. W031020

★STOCK

MINI END CUTTING PLIERS



- Drop forged carbon steel with Ni-Fe coating for durability
- Bi-material comfort grip handle

No. W031041

★**STOCK**

MINI LONG NOSE PLIERS



- Drop forged steel for durability
- Heat treated and fully polished
- Double dipped grip handle for comfort
- Material: carbon steel

No. W031042

★**STOCK**

MINI DIAGONAL PLIERS



- Drop forged steel for durability
- Heat treated and fully polished
- Double dipped grip handle for comfort
- Material: carbon steel

No. W031043

★**STOCK**

MINI LINESMAN PLIERS



- Drop forged steel for durability
- Heat treated and fully polished
- Double dipped grip handle for comfort
- Material: carbon steel

No. W031044

★**STOCK**

MINI END CUTTING PLIERS



- Drop forged steel for durability
- Heat treated and fully polished
- Double dipped grip handle for comfort
- Material: carbon steel

No. W031045

★**STOCK**

MINI NEEDLE NOSE PLIERS



- Drop forged steel for durability
- Heat treated and fully polished
- Double dipped grip handle for comfort
- Material: carbon steel

No. W031046

★**STOCK**

MINI BENT NOSE PLIERS



- Drop forged steel for durability
- Heat treated and fully polished
- Double dipped grip handle for comfort
- Material: carbon steel

No. W001306

★**STOCK**

7PC PLIERS SET



- Drop forged steel for durability
- Heat treated and fully polished
- Double dipped grip handle for comfort
- Material: carbon steel
- Contains: 8" groove joint pliers, 6" long nose pliers, 6" slip joint pliers, 4-1/2" long nose pliers, 6" diagonal pliers, 7" linesman pliers, 8" slip joint pliers

No. W001307

★**STOCK**

5PC PLIERS SET



- Drop forged steel for durability
- Heat treated and fully polished
- Double dipped grip handle for comfort
- Material: carbon steel
- Contains: 10" Slip Joint pliers, 8" linesman pliers, 8" long nose pliers, 6" diagonal pliers, 10" groove joint pliers

No. W031051

★STOCK

6"(160MM) LONG NOSE PLIERS



- Drop forged carbon steel, fully polished for durability
- Ergonomic comfort grip handle

W031052 8"(200 mm)

No. W031055

★STOCK

6"(160MM) LINESMAN PLIERS



- Drop forged carbon steel, fully polished for durability
- Ergonomic comfort grip handle

W031056 8"(200 mm)

No. W031053

★STOCK

6"(160MM) DIAGONAL PLIERS



- Drop forged carbon steel, fully polished for durability
- Ergonomic comfort grip handle

W031054 7"(180 mm)

No. W031062

★STOCK

6"(160MM) FLAT NOSE PLIERS



- Drop forged carbon steel, fully polished for durability
- Ergonomic comfort grip handle

No. W031060

★STOCK

6"(160MM) END CUTTING PLIERS



- Drop forged carbon steel, fully polished for durability
- Ergonomic comfort grip handle

No. W031061

★STOCK

6"(160MM) STRIPPER PLIERS



- Drop forged carbon steel, fully polished for durability
- Ergonomic comfort grip handle

No. W031059

★STOCK

6"(160MM) BENT NOSE PLIERS



- Drop forged carbon steel with full polished for durability
- Ergonomic comfort grip handle

No. W031047

★STOCK

CIRCLIP PLIERS EXTERNAL STRAIGHT



W031047 W031048 W031049 W031050

- Chrome-vanadium steel, fully polished, black finish
- Dipped grip handle

No. W031077

★STOCK

6"(160MM) C-CLAMP LOCKING PLIERS

W031078 11"(280mm)
W031079 18"(450mm)



- Chrome-vanadium steel jaw for maximum durability
- Quick, easy locking and release action
- Guarded release helps keep work fast and safe
- Turn screw to adjust holding pressure and fit work

No. W031080

★STOCK

6"(160MM) C-CLAMP LOCKING PLIERS WITH PAD

W031081 11"(280mm)
W031082 18"(450mm)



- Chrome-vanadium steel jaw for maximum durability
- Quick, easy locking and release action
- Guarded release helps keep work fast and safe
- Turn screw to adjust holding pressure and fit work

No. W031084

10"(250MM) SHEET LOCKING PLIERS



| | |
|---------|------------|
| W031083 | 8"(200mm) |
| W031084 | 10"(250mm) |

★STOCK

- Carbon steel jaw for maximum toughness and durability
- Quick, easy locking and release action
- Guarded release helps keep work fast and safe
- Turn screw to adjust holding pressure and fit work

No. W001300

★STOCK

4PC LOCKING PLIERS SET



- 5" curved jaw locking pliers
- 6-1/2" long nose jaw locking pliers
- 7" curved jaw locking pliers
- 10" curved jaw locking pliers
- Material: carbon steel

No. W001316

★STOCK

5PC LOCKING PLIERS SET



- Chrome-vanadium steel jaw for maximum durability
- Quick, easy locking and release action
- 5" curved jaw locking pliers
- 7" curved jaw locking pliers
- 10" curved jaw locking pliers
- 6-1/2" long nose locking pliers
- 9" long nose locking pliers

No. W031101

★STOCK

5"(130MM) CURVED JAW LOCKING PLIERS



- Chrome-vanadium steel jaw for maximum durability
- Quick, easy locking and release action
- Guarded release helps keep work fast and safe
- Turn screw to adjust holding pressure and fit work

| | |
|---------|------------|
| W031094 | 7"(180mm) |
| W031095 | 10"(250mm) |

No. W031093

★STOCK

6-1/2"(165MM)LONG NOSE STRAIGHT JAW LOCKING PLIERS



- Chrome-vanadium steel jaw for maximum durability
- Quick, easy locking and release action
- Guarded release helps keep work fast and safe
- Turn screw to adjust holding pressure and fit work

| | |
|---------|-----------|
| W031102 | 9"(230mm) |
|---------|-----------|

No. W001310

3PC LOCKING PLIERS SET

- Chrome-vanadium steel jaw for maximum durability
- Quick, easy locking and release action
- Guarded release helps keep work fast and safe
- Turn screw to adjust holding pressure and fit work
- 10"(255mm) curved jaw locking pliers
- 7"(180mm) curved jaw locking pliers
- 6-1/2"(165mm) long nose straight jaw locking pliers



★STOCK

No. W032001

★STOCK

SPRING CLAMP



- Soft durable pads to protect fine finishes
- Ergonomic handle for comfortable use
- Reinforced nylon construction for strength

| | |
|---------|------------|
| W032001 | 3/4"(19mm) |
| W032002 | 1"(25mm) |
| W032003 | 2"(51mm) |
| W032004 | 3"(76mm) |

No. W032005

★STOCK

STEEL SPRING CLAMP



- Non-marking PVC coating tips and handles to protect delicate finish with non-slip holding power
- Zinc-coated steel with non-corroding strong wound-steel spring for firm grip

| | |
|---------|------------|
| W032005 | 3/4"(19mm) |
| W032006 | 1"(25mm) |
| W032007 | 2"(51mm) |
| W032008 | 3"(76mm) |

No. W032009

★STOCK

SPRING CLAMP



- Pivoting jaw nose
- Ergonomic handle for comfortable use
- Reinforced nylon construction for strength

| | |
|---------|------------|
| W032009 | 3/4"(19mm) |
| W032010 | 1"(25mm) |
| W032011 | 2"(51mm) |
| W032012 | 3"(76mm) |

No. W032013

★STOCK

ALUMINUM SPRING CLAMP



- 3/4" jaw opening
- Aluminum frame and body
- With swivel pads

| | |
|---------|------------|
| W032013 | 3/4"(19mm) |
|---------|------------|

No. W032014

★STOCK

ALUMINUM SPRING CLAMP



- Aluminum frame and body
- With swivel pads
- Rubberized handle for comfortable use

| | |
|---------|--------------|
| W032014 | 1-1/2"(40mm) |
| W032015 | 2"(51mm) |

No. W031063

★STOCK

PUNCH PLIERS



- 6 punch sizes: 2.0, 2.5, 3.0, 3.5, 4.0, 4.5mm
- Ergonomic large handle

No. W032045

★STOCK

QUICK-RELEASE C-CLAMP

- Heavy duty malleable iron and steel construction
- Roll-formed screw threads ensure smooth operation and durability
- Quick-release mechanism
- Oversized T-handle for extra torque



| | |
|---------|----|
| W032045 | 3" |
| W032046 | 4" |
| W032047 | 6" |

No. W032016

★STOCK

C-CLAMP

- Malleable steel frame
- Black finish screw
- Swivel pad
- Ideal for most woodworking and metalworking applications



| | | | |
|---------|----|---------|----|
| W032016 | 1" | W032019 | 4" |
| W032017 | 2" | W032020 | 6" |
| W032018 | 3" | W032021 | 8" |

WORKPRO®

STRIKING TOOLS



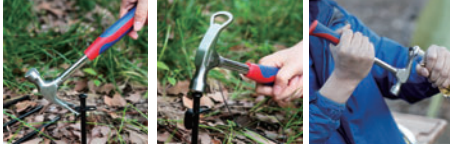
HAMMER & AXE

PRY BAR

CHISEL

No. W041087

80Z WEEKEND HAMMER



★STOCK

- 8 OZ Multi-purpose Hammer with Bottle Opener for Week-end Outdoor Camping Tent
- Unique bottle opener included
- Strong tubular steel shaft handle, comfortable rubberized anti-vibration grip
- Drop forged heat treated 8 ounce steel head
- Ideal for party time

No. W041021

★STOCK

CURVED CLAW HAMMER WITH HICKORY HANDLE



- Forged high-carbon steel head
- Fully heat treated & polished face
- Textured grip hickory handle

| | |
|---------|------|
| W041021 | 8oz |
| W041022 | 12oz |
| W041023 | 16oz |
| W041024 | 20oz |

No. W041027

★STOCK

RIP CLAW HAMMER WITH HICKORY HANDLE



- Forged high-carbon steel head
- Fully heat treated & polished face
- Textured grip hickory handle

| | |
|---------|------|
| W041027 | 16oz |
| W041028 | 20oz |

No. W041029

★STOCK

BALL-PEIN HAMMER WITH HICKORY HANDLE



- Forged high-carbon steel head
- Fully heat treated & polished face
- Textured grip hickory handle

| | |
|---------|------|
| W041029 | 16oz |
| W041030 | 24oz |

No. W041031

★STOCK

70Z MAGNETIC HAMMER WITH HICKORY HANDLE



- Forged high-carbon steel head
- Fully heat treated & polished face
- Textured grip hickory handle

No. W041020

★STOCK

160Z RUBBER MALLET WITH HARDWOOD HANDLE



- Solid rubber head
- Comfortable hickory handle
- Non-rebounding
- Non-spark

No. W041032

★STOCK

ONE-PIECE CLAW HAMMER



- Carbon steel, heat treated
- Drop forged in one-piece, fully polished
- Anti-vibration rubber grip handle

| | |
|---------|------|
| W041032 | 16oz |
| W041033 | 20oz |
| W041035 | 24oz |

No. W041060

★**STOCK**

RIP CLAW HAMMER WITH FIBERGLASS HANDLE



- Drop forged carbon steel
- Fully heat treated & polished face
- Fiberglass handle
- Comfortable, secure grip

| | |
|---------|------|
| W041060 | 16oz |
| W041061 | 20oz |
| W041062 | 24oz |

No. W041038

★**STOCK**

CURVED CLAW HAMMER WITH FIBERGLASS HANDLE



- Drop forged carbon steel
- Fully heat treated & polished face
- Fiberglass handle
- Comfortable, secure grip

| | |
|---------|------|
| W041038 | 16oz |
| W041039 | 20oz |

No. W041046

★**STOCK**

BALL-PEIN HAMMER WITH FIBERGLASS HANDLE



- Forged carbon steel head
- Fiberglass handle
- Textured rubberized grip for comfort

| | |
|---------|------|
| W041046 | 16oz |
| W041047 | 24oz |

No. W041041

★**STOCK**

STONE HAMMER WITH FIBERGLASS HANDLE



- Forged carbon steel head
- Fiberglass handle
- Textured rubberized grip for comfort

| | |
|---------|-------|
| W041041 | 2.5lb |
| W041042 | 3lb |

No. W041049

★**STOCK**

DEAD BLOW HAMMER



- Whole body made by PVC material
- Non-marring plastic faces
- Non-rebounding
- Non-spark
- Shot-filled head

| | |
|---------|-------|
| W041049 | 1lb |
| W041050 | 1.5lb |
| W041051 | 2.5lb |
| W041052 | 3lb |

No. W041053

★**STOCK**

35MM DOUBLE-FACED DEAD BLOW HAMMER



- Replaceable polyurethane faces
- Comfortable hickory handle
- Non-rebounding
- Non-spark

No. W045001

★**STOCK**

UTILITY BAR



- Slim profile for working in awkward areas
- Integrated nail pulling jaws

| | |
|---------|-----|
| W045001 | 13" |
| W045002 | 21" |

WORKPRO®

FINISHING TOOLS

FILE

BLOCK PLANE

BRUSH



No. W051026

★STOCK

ROUND RASP FILE



- Aggressive teeth remove wood fast for any wood shaping need
- Comfortable grip handle
- Ideal for wood carvers

| | |
|---------|-----|
| W051026 | 8" |
| W051027 | 10" |

No. W051028

★STOCK

FLAT ROUND RASP FILE



- Aggressive teeth remove wood fast for any wood shaping need
- Comfortable grip handle
- Ideal for wood carvers

| | |
|---------|-----|
| W051028 | 8" |
| W051029 | 10" |

No. W002100

★STOCK

5PC DIAMOND NEEDLE FILE SET



- Fine diamond grit
- Perfect for machinists, gunsmiths, jewelers and hobbyists
- Size: 3x140mm, 150 grit
- Dipped grip handle

No. W052001

★STOCK

CAST IRON BLOCK PLANE



- Front handle for extra control
- Hardened, tempered 1-9/16" width cutter for longer life
- Cast iron body for strength
- Machine polished to resist rust

No. W052002

★STOCK

ADJUSTABLE BLOCK PLANE



- Low angle blade for precision work
- Hardened and tempered 1-5/8" width cutter for longer life
- Cast iron body for strength
- Machine polished to resist rust

No. W052003

★STOCK

ADJUSTABLE BLOCK PLANE



- Dual wood handles for precision work
- Hardened, tempered 2" width cutter for longer life
- Cast iron, machine polished body for strength and to resist rust

No. W053001

★STOCK

STEEL BRUSH



W053001(3x17)



W053002(4x16)

- Carbon steel
- Plastic handle with scraper

No. W053003

★STOCK

STEEL BRUSH



W053003(9x20)



W053004(6x19)

- Carbon steel
- Plastic handle

PLASTIC TAPE MEASURE WITH RUBBER COVER

★STOCK

- Bi-material tape measure
- Self-locking mechanism allows to be extended smoothly
- Easy-to-use thumb button
- Push button retrieval
- Ergonomically designed case



| | |
|---------|-------------|
| W061005 | 10FT.(3m) |
| W061006 | 16FT.(5m) |
| W061007 | 25FT.(7.5m) |

No. W061001

★STOCK

PLASTIC TAPE MEASURE



- High-impact ABS case
- Heat treated spring provides long life and smooth blade rewind
- Strong belt clip

| | |
|---------|-------------|
| W061001 | 2m |
| W061002 | 10FT.(3m) |
| W061003 | 16FT.(5m) |
| W061004 | 25FT.(7.5m) |

No. W061011

★STOCK

CHROME PLATING TAPE MEASURE



- Strong durable blade
- Classic chrome plating with impact resistant case
- Easy belt clip

| | |
|---------|-------------|
| W061011 | 10FT.(3m) |
| W061012 | 16FT.(5m) |
| W061013 | 25FT.(7.5m) |

No. W064004

★STOCK

8" SLIDING T-BEVEL



- High-impact plastic handle with 4-way view vial
- Stainless steel blade
- Cylinder level vial

No. W064003

★STOCK

8" TRY SQUARE



- Etched stainless steel blade
- Brass bound hardwood handle
- 1/8", 1/16" graduations

No. W064005

★STOCK

9" SLIDING T-BEVEL WITH WOODEN HANDLE



- Hardwood handle
- Etched stainless steel blade
- 1/8", 1/16", 1/32" and mm graduations

No. W064006

★STOCK

7" SQUARE LAYOUT TOOL



- Precision machined die-cast aluminum body
- Etched SAE & metric marking

No. W064007

SAE

8x12" STEEL CARPENTER SQUARE

★STOCK



No. W064010
400x600mm

Metric

- High-grade steel body with powder coating
- SAE & metric markings

No. W065008

★STOCK

12x24" STEEL RAFTER SQUARE

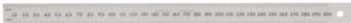


- High-quality hardened steel for durability and long life
- Embossed graduations for easy reading on face and back
- Reverse reading scale makes measuring more efficient
- Treated with protective finish for rust-resistance

No. W065001

★STOCK

STAINLESS STEEL RULER



- Stainless steel
- Permanently etched graduation

| | |
|---------|-----|
| W065001 | 12" |
| W065002 | 24" |
| W065003 | 48" |

No. W065004

★STOCK

STRAIGHT EDGE ALUMINUM RULER (ANODISED)



- Stainless steel
- Permanently etched graduation

| | |
|---------|-----|
| W065004 | 24" |
| W065005 | 48" |

NEW

★**STOCK**

No. W062034

9" TORPEDO LEVEL



- Special angle design for picture hanging
- Durable acrylic vials read plumb, level, 45°
- Top read window for convenience
- Highly visible vials with magnetic base

No. W062009

★**STOCK**

MAGNETIC ALUMINUM I-BEAM LEVEL

- Structural aluminum frame for maximum durability
- Rubber end caps protect against shock when dropped or bumped
- Impact-resistant solid block vials
- Comfort grips for ease of handling
- Rare-earth magnets base



| | |
|---------|-----|
| W062009 | 24" |
| W062010 | 48" |

No. W062001

★**STOCK**

9" PLASTIC TORPEDO LEVEL



- Acrylic vials read plumb, level, 45°
- Top read window for convenience
- Rubber end caps for shock-resistant
- Highly visible vials with magnetic base

No. W062002

★**STOCK**

9" ALUMINUM FRAME TORPEDO LEVEL



- Acrylic vials read plumb, level, 45°
- Top read window for convenience
- V-groove working edge fits on pipe or conduit
- Highly visible vials with magnetic base

No. W062003

★**STOCK**

9" ALUMINUM FRAME TORPEDO LEVEL



- Magnetic v-groove base
- Visible vials read plumb, level, 45°
- Top read windows for convenience
- Heavy duty aluminum frame with magnetic strip
- Rubber end caps for shock-resistant

No. W062004

★**STOCK**

9" ALUMINUM FRAME TORPEDO LEVEL



- Highly visible vials read plumb, level, 45°
- Top read window for convenience
- Heavy duty aluminum frame
- Strong holding magnetic edge

No. W062005

★**STOCK**

24" HEAVY DUTY DIE-CAST ALUMINUM LEVEL



- With strong magnet
- Accuracy: 1 mm/m
- Lightweight aluminum body, spray-paint

No. W062006

★**STOCK**

TOP-READ ALUMINUM LEVEL



- High grade aluminum frame
- Shock resistant end caps
- Acrylic windows protect vials from breakage

No. W066003

★STOCK

6" (150MM) ELECTRONIC CALIPER WITH DIGITAL DISPLAY



- Manual power ON/OFF
- Zero setting at any position
- Stainless steel body
- LCD display for quick & easy measurement
- Metric/SAE conversion button for accurate size readings, liner accuracy:0.02mm/0.001"
- Depth rod for greater accuracy
- Thumb wheel adjustments
- Inner/outer measuring
- Measuring range:0-150mm/0-6"
- 2PC LR44 button cell batteries included(one installed & one extra)

No. W066006

★STOCK

6" (150MM) ELECTRONIC CALIPER WITH DIGITAL DISPLAY



- 150mm Electronic Caliper with Digital Display(METRIC)
- Manual power ON/OFF
- Zero setting at any position
- Stainless steel body
- LCD display for quick& easy measurement
- Metric/inch conversion button for accurate size readings, liner accuracy:0.02mm/0.001"
- Depth rod for greater accuracy
- Thumb-wheel adjustments
- Inner/outer measuring
- Measuring range:0-150mm/0-6"
- Button cell batteries included

No. W066002

★STOCK

6" (150MM) VERNIER CALIPER



- High grade lightweight anodized aluminum alloy body
- Highly visible graduations in 1/8", 1/16"

No. W066005

★STOCK

6" (150MM) VERNIER CALIPER



- 150mm Vernier Caliper
- carbon steel

No. W074001



1/4" DR. STANDARD SOCKET, 6PT



- Chrome-vanadium steel
- Chrome plated, mirror polished

| | | |
|---------|--------|--|
| W074001 | 5/32" | |
| W074002 | 3/16" | |
| W074003 | 7/32" | |
| W074004 | 1/4" | |
| W074005 | 9/32" | |
| W074006 | 5/16" | |
| W074007 | 11/32" | |
| W074008 | 3/8" | |
| W074009 | 7/16" | |
| W074010 | 1/2" | |

No. W074022



1/4" DR. DEEP SOCKET, 6PT



- Chrome-vanadium steel
- Chrome plated, mirror polished

| | | |
|---------|--------|--------|
| W074022 | 3/16" | ★STOCK |
| W074023 | 7/32" | ★STOCK |
| W074024 | 1/4" | ★STOCK |
| W074025 | 9/32" | ★STOCK |
| W074026 | 5/16" | ★STOCK |
| W074027 | 11/32" | ★STOCK |
| W074028 | 3/8" | ★STOCK |
| W074029 | 7/16" | ★STOCK |
| W074030 | 1/2" | ★STOCK |

No. W074011



1/4" DR. STANDARD SOCKET, 6PT



- Chrome-vanadium steel
- Chrome plated, mirror polished

| | | |
|---------|------|--------|
| W074011 | 4mm | ★STOCK |
| W074012 | 5mm | ★STOCK |
| W074013 | 6mm | ★STOCK |
| W074014 | 7mm | ★STOCK |
| W074015 | 8mm | ★STOCK |
| W074016 | 9mm | ★STOCK |
| W074017 | 10mm | ★STOCK |
| W074018 | 11mm | ★STOCK |
| W074019 | 12mm | ★STOCK |
| W074020 | 13mm | |
| W074021 | 14mm | |

No. W074031



1/4" DR. DEEP SOCKET, 6PT



- Chrome-vanadium steel
- Chrome plated, mirror polished

| | | |
|---------|------|--------|
| W074031 | 4mm | ★STOCK |
| W074032 | 5mm | ★STOCK |
| W074033 | 6mm | ★STOCK |
| W074034 | 7mm | ★STOCK |
| W074035 | 8mm | ★STOCK |
| W074036 | 9mm | ★STOCK |
| W074037 | 10mm | ★STOCK |
| W074038 | 11mm | ★STOCK |
| W074039 | 12mm | ★STOCK |
| W074040 | 13mm | ★STOCK |
| W074041 | 14mm | ★STOCK |

No. W074092

3/8" DR. DEEP SOCKET, 6PT



SAE



- Chrome-vanadium steel
- Chrome plated, mirror polished

| | | |
|---------|--------|--------|
| W074092 | 5/16" | ★STOCK |
| W074093 | 3/8" | ★STOCK |
| W074094 | 7/16" | ★STOCK |
| W074095 | 1/2" | ★STOCK |
| W074096 | 9/16" | ★STOCK |
| W074097 | 5/8" | ★STOCK |
| W074098 | 11/16" | ★STOCK |
| W074099 | 3/4" | ★STOCK |
| W074100 | 13/16" | ★STOCK |
| W074101 | 7/8" | ★STOCK |

No. W074119

3/8" DR. STANDARD SOCKET, 12PT



SAE



- Chrome-vanadium steel
- Chrome plated, mirror polished

| | | |
|---------|--------|--------|
| W074119 | 1/4" | ★STOCK |
| W074120 | 5/16" | ★STOCK |
| W074121 | 3/8" | ★STOCK |
| W074122 | 7/16" | ★STOCK |
| W074123 | 1/2" | ★STOCK |
| W074124 | 9/16" | ★STOCK |
| W074125 | 5/8" | ★STOCK |
| W074126 | 11/16" | ★STOCK |
| W074127 | 3/4" | ★STOCK |
| W074128 | 13/16" | ★STOCK |
| W074129 | 7/8" | ★STOCK |

No. W074102

3/8" DR. DEEP SOCKET, 6PT



Metric



- Chrome-vanadium steel
- Chrome plated, mirror polished

| | | |
|---------|------|--------|
| W074102 | 8mm | ★STOCK |
| W074103 | 9mm | ★STOCK |
| W074104 | 10mm | ★STOCK |
| W074105 | 11mm | ★STOCK |
| W074106 | 12mm | ★STOCK |
| W074107 | 13mm | ★STOCK |
| W074108 | 14mm | ★STOCK |
| W074109 | 15mm | ★STOCK |
| W074110 | 16mm | ★STOCK |
| W074111 | 17mm | ★STOCK |
| W074112 | 18mm | ★STOCK |
| W074113 | 19mm | ★STOCK |
| W074114 | 20mm | ★STOCK |
| W074115 | 21mm | ★STOCK |
| W074116 | 22mm | ★STOCK |
| W074117 | 23mm | ★STOCK |
| W074118 | 24mm | ★STOCK |

No. W074130

3/8" DR. STANDARD SOCKET, 12PT



Metric



- Chrome-vanadium steel
- Chrome plated, mirror polished

| | | |
|---------|------|--------|
| W074130 | 6mm | ★STOCK |
| W074131 | 7mm | ★STOCK |
| W074132 | 8mm | ★STOCK |
| W074133 | 9mm | ★STOCK |
| W074134 | 10mm | ★STOCK |
| W074135 | 11mm | ★STOCK |
| W074136 | 12mm | ★STOCK |
| W074137 | 13mm | ★STOCK |
| W074138 | 14mm | ★STOCK |
| W074139 | 15mm | ★STOCK |
| W074140 | 16mm | ★STOCK |
| W074141 | 17mm | ★STOCK |
| W074142 | 18mm | ★STOCK |
| W074143 | 19mm | ★STOCK |
| W074144 | 20mm | ★STOCK |
| W074145 | 21mm | ★STOCK |
| W074146 | 22mm | ★STOCK |
| W074148 | 24mm | ★STOCK |

No. W074239

SAE

1/2" DR. STANDARD SOCKET, 12PT



- Chrome-vanadium steel
- Chrome plated, mirror polished

| | | |
|---------|---------|--------|
| W074239 | 5/16" | ★STOCK |
| W074240 | 3/8" | ★STOCK |
| W074241 | 7/16" | ★STOCK |
| W074242 | 1/2" | ★STOCK |
| W074243 | 9/16" | ★STOCK |
| W074244 | 19/32" | ★STOCK |
| W074245 | 5/8" | ★STOCK |
| W074246 | 11/16" | ★STOCK |
| W074247 | 3/4" | ★STOCK |
| W074248 | 25/32" | ★STOCK |
| W074249 | 13/16" | ★STOCK |
| W074250 | 7/8" | ★STOCK |
| W074251 | 15/16" | ★STOCK |
| W074253 | 1" | ★STOCK |
| W074254 | 1-1/16" | ★STOCK |
| W074255 | 1-1/8" | ★STOCK |
| W074256 | 1-3/16" | ★STOCK |
| W074257 | 1-1/4" | ★STOCK |

No. W074258

Metric

1/2" DR. STANDARD SOCKET, 12PT



- Chrome-vanadium steel
- Chrome plated, mirror polished

| | | |
|---------|------|--------|
| W074258 | 8mm | ★STOCK |
| W074259 | 9mm | ★STOCK |
| W074260 | 10mm | ★STOCK |
| W074261 | 11mm | ★STOCK |
| W074262 | 12mm | ★STOCK |
| W074263 | 13mm | ★STOCK |
| W074264 | 14mm | ★STOCK |
| W074265 | 15mm | ★STOCK |
| W074266 | 16mm | ★STOCK |
| W074267 | 17mm | ★STOCK |
| W074268 | 18mm | ★STOCK |
| W074269 | 19mm | ★STOCK |
| W074270 | 20mm | ★STOCK |
| W074271 | 21mm | ★STOCK |
| W074272 | 22mm | ★STOCK |
| W074273 | 23mm | ★STOCK |
| W074274 | 24mm | ★STOCK |
| W074275 | 25mm | ★STOCK |
| W074276 | 26mm | ★STOCK |
| W074277 | 27mm | ★STOCK |
| W074278 | 28mm | ★STOCK |
| W074279 | 29mm | ★STOCK |
| W074280 | 30mm | ★STOCK |
| W074282 | 32mm | ★STOCK |

No. W074195

SAE

1/2" DR. DEEP SOCKET, 6PT



- Chrome-vanadium steel
- Chrome plated, mirror polished

| | | |
|---------|-------|--------|
| W074195 | 5/16" | |
| W074196 | 3/8" | |
| W074197 | 7/16" | ★STOCK |
| W074198 | 1/2" | ★STOCK |
| W074199 | 9/16" | ★STOCK |

| | | |
|---------|---------|--------|
| W074201 | 5/8" | ★STOCK |
| W074202 | 11/16" | ★STOCK |
| W074203 | 3/4" | ★STOCK |
| W074204 | 25/32" | |
| W074205 | 13/16" | ★STOCK |
| W074206 | 7/8" | ★STOCK |
| W074207 | 15/16" | ★STOCK |
| W074209 | 1" | ★STOCK |
| W074210 | 1-1/16" | ★STOCK |
| W074211 | 1-1/8" | ★STOCK |
| W074212 | 1-3/16" | ★STOCK |
| W074213 | 1-1/4" | ★STOCK |

No. W074304

★**STOCK**

EXTENSION BAR

CR-V



- Chrome-vanadium steel
- Chrome plated, mirror polished

| | |
|---------|---------|
| W074304 | 1/4"x2" |
| W074305 | 1/4"x3" |
| W074306 | 1/4"x4" |
| W074307 | 1/4"x6" |
| W074308 | 3/8"x3" |
| W074309 | 3/8"x5" |

| | |
|---------|----------|
| W074310 | 3/8"x6" |
| W074311 | 3/8"x10" |
| W074312 | 1/2"x3" |
| W074313 | 1/2"x5" |
| W074314 | 1/2"x10" |

No. W071014

★**STOCK**

RATCHET HANDLE



- Carbon steel, chrome plated
- Comfortable grip handle
- Forward/reverse ratchet

| | |
|---------|------|
| W071014 | 1/4" |
| W071010 | 3/8" |
| W071015 | 1/2" |

No. W071016

★**STOCK**

QUICK-RELEASE RATCHET HANDLE



CR-V

- Chrome-vanadium steel, full polished
- Forward/reverse ratchet
- Thumb operated reverse-switch mechanism
- Quick-release mechanism

| | |
|---------|------|
| W071016 | 1/4" |
| W071017 | 3/8" |
| W071018 | 1/2" |

No. W071001

★**STOCK**

QUICK-RELEASE RATCHET HANDLE

CR-V



- 45 teeth gear
- Chrome-vanadium steel
- Ergonomic rubberized grip
- Chrome-plated, mirror polished

| | |
|---------|------|
| W071001 | 1/4" |
| W071002 | 3/8" |
| W071003 | 1/2" |

No. W071004

★**STOCK**

QUICK-RELEASE PEAR-HEAD RATCHET HANDLE

CR-V



- 72 teeth gear
- Chrome-vanadium steel
- Ergonomic rubber grip
- Chrome plated, mirror polished

| | |
|---------|------|
| W071004 | 1/4" |
| W071005 | 3/8" |
| W071006 | 1/2" |

No. W071007

★**STOCK**

QUICK-RELEASE PEAR-HEAD RATCHET HANDLE

CR-V

- 72 teeth gear
- Chrome-vanadium steel
- Ergonomic rubberized grip
- Chrome plated, mirror polished

| | |
|---------|------|
| W071007 | 1/4" |
| W071008 | 3/8" |
| W071009 | 1/2" |



No. W073150

COMBINATION WRENCH (TYPE I)

CR-V

- Chrome-vanadium steel
- Chrome plated, mirror polished



| | | |
|---------|-------|--------|
| W073150 | 26mm | ★STOCK |
| W073151 | 27mm | ★STOCK |
| W073152 | 28mm | ★STOCK |
| W073153 | 29mm | ★STOCK |
| W073154 | 30mm | ★STOCK |
| W073155 | 32mm | ★STOCK |
| W073234 | 1/4" | |
| W073235 | 5/16" | |
| W073236 | 3/8" | |
| W073237 | 7/16" | |
| W073238 | 1/2" | |

| | | |
|---------|---------|--|
| W073239 | 9/16" | |
| W073240 | 5/8" | |
| W073241 | 11/16" | |
| W073242 | 3/4" | |
| W073243 | 13/16" | |
| W073244 | 7/8" | |
| W073245 | 15/16" | |
| W073246 | 1" | |
| W073247 | 1-1/16" | |
| W073248 | 1-1/8" | |
| W073249 | 1-1/4" | |

No. W073156

COMBINATION WRENCH (TYPE II)

CR-V

- Chrome-vanadium steel
- Chrome plated, mirror polished



| | | |
|---------|------|--------|
| W073156 | 6mm | ★STOCK |
| W073157 | 7mm | ★STOCK |
| W073158 | 8mm | ★STOCK |
| W073159 | 9mm | ★STOCK |
| W073160 | 10mm | ★STOCK |
| W073161 | 11mm | ★STOCK |
| W073162 | 12mm | ★STOCK |
| W073163 | 13mm | ★STOCK |
| W073164 | 14mm | ★STOCK |
| W073165 | 15mm | ★STOCK |
| W073166 | 16mm | ★STOCK |
| W073167 | 17mm | ★STOCK |
| W073168 | 18mm | ★STOCK |
| W073169 | 19mm | |
| W073170 | 20mm | |
| W073171 | 21mm | |
| W073172 | 22mm | ★STOCK |
| W073173 | 23mm | |
| W073174 | 24mm | ★STOCK |
| W073175 | 25mm | |
| W073176 | 26mm | |

| | | |
|---------|---------|--------|
| W073177 | 27mm | |
| W073178 | 28mm | |
| W073179 | 29mm | |
| W073180 | 30mm | |
| W073181 | 32mm | |
| W073250 | 1/4" | |
| W073251 | 5/16" | |
| W073252 | 3/8" | |
| W073253 | 7/16" | |
| W073254 | 1/2" | |
| W073255 | 9/16" | |
| W073256 | 5/8" | |
| W073257 | 11/16" | ★STOCK |
| W073258 | 13/16" | ★STOCK |
| W073259 | 13/16" | |
| W073260 | 7/8" | ★STOCK |
| W073261 | 15/16" | |
| W073262 | 1" | |
| W073263 | 1-1/16" | |
| W073264 | 1-1/8" | |
| W073265 | 1-1/4" | |

No. W073022

DOUBLE OPEN WRENCH (TYPE II)

CR-V



- Chrome-vanadium steel
- Chrome plated, mirror polished

| | | |
|---------|---------|--------|
| W073022 | 6x7mm | ★STOCK |
| W073023 | 8x9mm | ★STOCK |
| W073025 | 10x11mm | ★STOCK |
| W073027 | 12x13mm | ★STOCK |
| W073029 | 14x15mm | ★STOCK |
| W073031 | 16x17mm | ★STOCK |
| W073034 | 18x19mm | ★STOCK |
| W073036 | 20x22mm | ★STOCK |
| W073037 | 21x23mm | ★STOCK |
| W073039 | 24x27mm | ★STOCK |
| W073040 | 25x28mm | ★STOCK |
| W073041 | 27x30mm | ★STOCK |
| W073042 | 30x32mm | ★STOCK |

No. W073109

DOUBLE OPEN WRENCH (DIN)

CR-V



- Chrome-vanadium steel
- Chrome plated, mirror polished

| | | |
|---------|---------|--------|
| W073109 | 6x7mm | ★STOCK |
| W073110 | 8x9mm | ★STOCK |
| W073112 | 10x11mm | ★STOCK |
| W073114 | 12x13mm | ★STOCK |
| W073116 | 14x15mm | ★STOCK |
| W073118 | 16x17mm | ★STOCK |
| W073121 | 18x19mm | ★STOCK |
| W073123 | 20x22mm | ★STOCK |
| W073124 | 21x23mm | ★STOCK |
| W073126 | 24x27mm | ★STOCK |
| W073127 | 25x28mm | ★STOCK |
| W073128 | 27x30mm | ★STOCK |
| W073129 | 30x32mm | ★STOCK |

No. W073366

DOUBLE RING WRENCH



- Carbon steel
- Chrome plated, mirror polished

| | | |
|---------|---------|--------|
| W073366 | 6x7mm | |
| W073367 | 8x9mm | |
| W073433 | 10x11mm | ★STOCK |
| W073435 | 12x13mm | ★STOCK |
| W073437 | 14x15mm | ★STOCK |
| W073439 | 16x17mm | ★STOCK |
| W073442 | 18x19mm | ★STOCK |
| W073444 | 20x22mm | ★STOCK |
| W073445 | 21x23mm | ★STOCK |
| W073447 | 24x27mm | |
| W073448 | 25x28mm | |
| W073449 | 27x30mm | |
| W073450 | 30x32mm | |

No. W073324

DOUBLE RING WRENCH (TYPE I)

CR-V



- Chrome-vanadium steel
- Chrome plated, mirror polished

| | | |
|---------|---------|--------|
| W073324 | 6x7mm | ★STOCK |
| W073325 | 8x9mm | ★STOCK |
| W073327 | 10x11mm | ★STOCK |
| W073329 | 12x13mm | ★STOCK |
| W073331 | 14x15mm | ★STOCK |
| W073333 | 16x17mm | ★STOCK |
| W073336 | 18x19mm | ★STOCK |
| W073338 | 20x22mm | ★STOCK |
| W073339 | 21x23mm | ★STOCK |
| W073341 | 24x27mm | ★STOCK |
| W073342 | 25x28mm | ★STOCK |
| W073343 | 27x30mm | ★STOCK |
| W073344 | 30x32mm | ★STOCK |

No. W003300

★STOCK

8PC DOUBLE OPEN WRENCH SET(DIN)

CR-V



- Chrome-vanadium steel and heat treated for strength and durability
- Sand blasting and chrome plated
- Size: 6x7, 8x9, 10x11, 12x13, 14x15, 16x17, 18x19, 20x22mm

No. W003302

★STOCK

8PC DOUBLE RING END WRENCH SET(DIN)

CR-V



- Chrome-vanadium steel and heat treated for strength and durability
- Sand blasting and chrome plated
- Size: 6x7, 8x9, 10x11, 12x13, 14x15, 16x17, 18x19, 20x22mm

No. W003304

★STOCK

6PC COMBINATION WRENCH SET(DIN)

CR-V



- Chrome-vanadium steel and heat treated for strength and durability
- Sand blasting and chrome plated
- Size: 8, 10, 12, 14, 16, 18mm

No. W003321

★STOCK

7PC RATCHET SPANNER SET

- 7PC ratchet spanner set : size: 3/8", 7/16", 1/2", 9/16", 5/8", 11/16, 3/4"



No. W003322

- 7PC ratchet spanner set (metric): 10, 11, 12, 13, 14, 15, 16mm



No. W003315

NEW

16PC COMBINATION WRENCH SET



- 6mm, 8mm, 10mm, 11mm, 12mm, 13mm, 14mm, 15mm, 17mm, 19mm, 21mm, 22mm, 24mm, 27mm, 30mm, 32mm

No. W003316

NEW

26PC COMBINATION WRENCH SET



- 6mm, 7mm, 8mm, 9mm, 10mm, 11mm, 12mm, 13mm, 14mm, 15mm, 16mm, 17mm, 18mm, 19mm, 20mm, 21mm, 22mm, 23mm, 24mm, 25mm, 26mm, 27mm, 28mm, 29mm, 30mm, 32mm



NEW
★STOCK

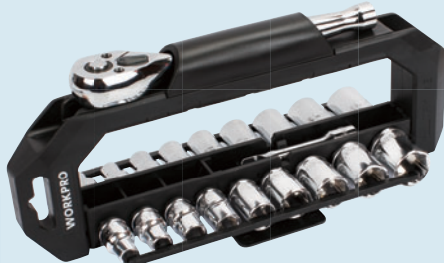
20PC SOCKET SET WITH ROTATABLE FRAME

No. W003072

CR-V

SAE

Metric



- 1PC 3/8" Dr. quick release ratchet handle 72-tooth
- 1PC 3/8" Dr. 3" extension bar
- 9PC 3/8" Dr. SAE sockets,
6pt socket: 1/4", 5/16", 3/8", 7/16", 1/2", 9/16", 3/4", 11/16", 5/8"
- 9PC 3/8" Dr. metric sockets, 6pt socket: 8mm, 9mm, 10mm,
11mm, 13mm, 14mm, 16mm, 17mm, 19mm

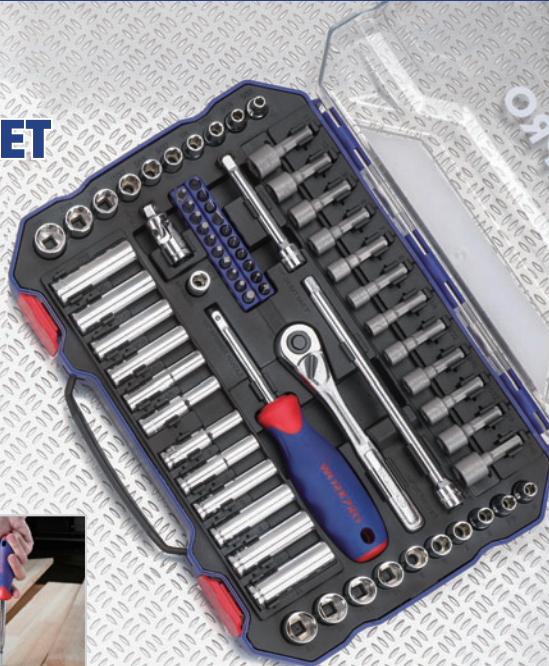
70PC 1/4" DR. 6-POINT SOCKET SET

No. W003068

CR-V

SAE

Metric



NEW

★STOCK



- 1PC 1/4" Dr. quick release ratchet handle 45-tooth
- 1PC 1/4"×3" extension bar
- 1PC 1/4"×6" extension bar
- 1PC 1/4" universal joint
- 1PC 1/4"Dr. spinner handle
- 1PC 1/4"Dr. coupler
- 10PC 1/4"Dr. SAE sockets, 6pt:5/32",3/16",7/32",1/4",9/32",5/16",11/32",3/8",7/16",1/2"
- 10PC 1/4"Dr. metric sockets, 6pt:5mm,5.5mm,6mm,7mm,8mm,9mm,10mm,11mm,12mm,13mm
- 6PC 1/4"Dr. sae deep sockets, 6pt:1/4",9/32",5/16",11/32",3/8",7/16"
- 6PC 1/4"Dr. metric deep sockets, 6pt:6mm,7mm,8mm,9mm,10mm,11mm
- 20PC bits with holder
- 12PC nut drivers
- 1PC transparent box

3/8" DR. DUAL-DRIVE RATCHET

- Ergonomic handle with slip-resistant rubber grip
- Patented Dual-drive technology 2x faster than standard ratcheting
- Hold the ratchet ring to engage Dual-drive
- Rotate the handle only to work as standard ratchet
- At the starting point, directly rotate the ratchet ring can work faster



2X
FASTER
THAN STANDARD
RATCHETING



**GIVE A HOLD OF THE RATCHET CAP,
SPEED UP YOUR WORK.**

No. W003001

32PC SOCKET SET

- CR-V socket set
- 10PC 3/8" Dr. SAE sockets: 5/16", 3/8", 7/16", 1/2", 9/16", 5/8", 11/16", 3/4", 13/16", 7/8"
- 11PC 3/8" Dr. metric sockets: 9, 10, 11, 12, 13, 14, 15, 16, 17, 18, 19mm
- 7PC CR-V combination wrenches: 3/8", 7/16", 1/2", 9/16", 5/8", 11/16", 3/4"
- 1PC 3" extension bar
- 2PC spark plugs: 13/16"(21mm), 5/8"(16mm)
- 1PC 3/8" Dr. ratchet handle
- 1PC durable blow molded case



★STOCK

CR-V

3/8"
DRIVE

No. W003057

★STOCK

108PC HIGH QUALITY MECHANICS TOOL SET

CR-V

SAE

Metric

Contains the assortment that needed for most daily applications
 This Set includes 1/4" and 1/2" quick release ratcheting handle.
 Sockets in Metric size. All tools are in high quality chrome vanadium steel.



- 17PC 1/2 in. Dr. Metric (6-Point) Short Sockets (CR-V): 10, 11, 13, 14, 15, 16, 17, 18, 19, 20, 21, 22, 23, 24, 27, 30, 32mm
- 5PC 1/2 in. Dr. Metric (6-Point) Long Sockets (CR-V): 14, 15, 17, 19, 22mm
- 2PC 1/2 in. Dr. Extension Bar: 5", 10"
- 1PC 1/2 in. Dr. Universal joint
- 8PC 1/2 in. Dr. E Sockets (CR-V): E10, E11, E12, E14, E16, E18, E20, E24
- 1PC 1/2 in. Dr. Quick Release Ratchet Handle
- 2PC 1/2 in. Dr. Spark Plug Sockets (CR-V): 16mm, 21mm
- 1PC 1/2 in. Dr. Adaptor
- 17PC 1/4 in. Dr. Metric (6-Point) Short Sockets (CR-V): 4, 4.5, 5, 5.5, 6, 7, 8, 9, 10, 11, 12, 13, 14mm
- 8PC 1/4 in. Dr. Metric (6-Point) Long Sockets (CR-V): 6, 7, 8, 9, 10, 11, 12, 13mm
- 2PC 1/4 in. Dr. Extension Bar: 2", 3"
- 1PC 1/4 in. Dr. Universal joint
- 1PC 1/4 in. Dr. Quick Release Ratchet Handle
- 5PC 1/4 in. Dr. E Sockets (CR-V): E4, E5, E6, E7, E8
- 1PC 1/4 in. Dr. Slider
- 3PC Hex Key (Carbon Steel) : 1.5, 2, 2.5mm
- 1PC 1/4" X 6" Piercing Bar
- 18PC 1/4 in. Dr. Bits: SL4, SL5.5, SL6.5, PH1, PH2, PZ1, PZ2, H3, H4, H5, H6, T8, T10, T15, T15, T20, T25, T27, T30
- 17PC 5/16 in. Dr. Bits: SL8, SL10, SL12; T40, T45, T50, T55, T60; PH3, PH4; PZ3, PZ4; HEX7, HEX8, HEX10, HEX12, HEX14
- 1PC 1/2" Flexible Sleeve

No. W003050

62PC 1/4" AND 3/8" SOCKETS RATCHET SET

CR-V

SAE

Metric

- 32 PC CR-V steel screwdriver bits
- 1PC magnetic bit holder
- 1PC ratchet screwdriver handle
- 1PC 3/8" Dr. ratchet handle with quick release function
- 1PC 3/8" to 1/4" adaptor
- 1PC 1/4" to 1/4" coupler
- 1PC 3/8" Dr. x 3" extension bar
- 11PC 1/4" Dr. sockets in SAE: 5/32", 3/16", 7/32", 1/4", 9/32", 5/16", 11/32", 3/8", 13/32", 7/16", 1/2"
- 10PC 1/4" Dr. sockets in Metric: 4, 4.5, 5, 5.5, 6, 7, 8, 9, 10, 11mm
- 3pc 3/8" Dr. sockets: 12, 13, 14mm
- 1PC 16" metal case



No. W072001

★**STOCK**

STAMPED ADJUSTABLE WRENCH



- Forged carbon steel construction for strength
- Chrome plated for rust resistance and longer life

| | |
|---------|------------|
| W072001 | 6"(150mm) |
| W072002 | 8"(200mm) |
| W072003 | 10"(250mm) |
| W072004 | 12"(300mm) |
| W072005 | 15"(375mm) |



No. W003200

★**STOCK**

3PC ADJUSTABLE WRENCH SET



- Forged carbon steel construction for strength
- Chrome plated for rust resistance and longer life
- Size: 6", 8", 10"

No. W003201

★**STOCK**

3PC ADJUSTABLE WRENCH SET WITH COMFORT HANDLE

- Chrome-vanadium steel construction for strength
- Chrome plated for rust and corrosion resistance
- Dual-material comfort grip handle
- Size: 6", 8", 10"



WORKPRO®

ELECTRICAL TOOLS



INSULATED SCREWDRIVERS

INSULATED PLIERS

WIRE STRIPPER

No. W095001

★STOCK

8"(220MM) VDE INSULATED LONG NOSE PLIERS

1,000V



- Chrome-vanadium steel with Ni-Fe coating
- Dual-material comfort grip handle
- Integral guards help prevent hand contact with conductive parts
- Insulated voltage:1,000V

No. W095004

★STOCK

6"(160MM) VDE INSULATED DIAGONAL CUTTING PLIERS

1,000V



- Chrome-vanadium steel with Ni-Fe coating
- Dual-material comfort grip handle
- Integral guards help prevent hand contact with conductive parts
- Insulated voltage:1,000V

No. W095005

★STOCK

★STOCK

10"(250MM) VDE INSULATED GROOVE JOINT PLIERS

1,000V



- Chrome-vanadium steel with Ni-Fe coating
- Dual-material comfort grip handle
- Integral guards help prevent hand contact with conductive parts
- Insulated voltage:1,000V

No. W094001

★STOCK

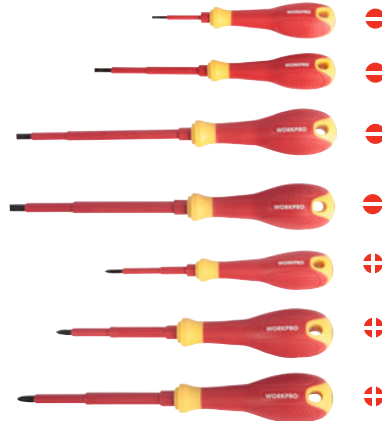
VDE INSULATED SCREWDRIVER

- VDE approved handle
- Insulated to 1,000V
- Ergonomic comfort grip handle

1,000V



| | |
|---------|-----------|
| W094001 | 2.5X50mm |
| W094008 | 3.5X75mm |
| W094002 | 4X100mm |
| W094003 | 5.5X150mm |
| W094004 | 6.5X150mm |
| W094005 | PH0X75mm |
| W094006 | PH1X100mm |
| W094007 | PH2X125mm |





WIRE STRIPPER MAGIC BOX

NEW

★STOCK

No. W091025

- Innovative design for NM pliers with maximum durability and tool life
- Quickly strips 6-24 AWG solid wire, meets daily use
- Come with transparent plastic box for easy storage

mm mm²
 1.6 ∅ 2.5
 1.3 ∅ 1.5
 1.0 ∅ 1.0
 0.8 ∅ 0.75
 0.65 ∅ 0.4
 0.5 ∅ 0.2



mm mm²
 4.1 ∅ 16
 3.6 ∅ 10
 2.6 ∅ 6
 2.0 ∅ 4



○RG6
 ○RG59



☺☺
 3X2.5mm²
 ☺☺
 3X1.5mm²



- Creative design, it strips off wire by a lightly push, simple and easy
- Four specifications on four sides, meets daily needs
- Equipped with transparent plastic box for easy storage
- Convenient removable sliding panel at the bottom for cleaning scraps
- 3cm long depressed square on the top, providing various length measurements



WORKPRO®

TUBE CUTTER
PIPE WRENCH
TUBE BENDER

PLUMBING TOOLS

No. W103003

★STOCK

HEAVY DUTY TUBING BENDER

- Bending applications: soft copper, aluminum and brass tubing
- Max. bending radius : 90°
- Max. bending outer diameter: 19/32", 7/8" (15mm, 22mm)



| | |
|---------|--------------|
| W103003 | 19/32", 7/8" |
| W103008 | 15mm, 22mm |

No. W103005

★STOCK

FLARING TOOL

- Chrome plated steel die bars and clamping screws
- Drop forged, heat treated steel yoke
- Hardened, self-centering cone produces perfect 45° flares
- For soft copper, aluminum and brass tubing
- Tubing outer diameter: 3/16", 1/4", 5/16", 3/8", 7/16", 1/2", 5/8" (5, 6, 8, 10, 12, 14, 16mm)



| | |
|---------|---|
| W103005 | 3/16", 1/4", 5/16", 3/8", 7/16", 1/2", 5/8" |
| W103009 | 5, 6, 8, 10, 12, 14, 16mm |

No. W033001

★STOCK

BENCH VISE FIX WITH ANVIL

- Material: ductile iron

| Item# | Jaw Width | Jaw Opening |
|---------|-----------|-------------|
| W033001 | 4"(100mm) | 3"(75mm) |
| W033002 | 5"(125mm) | 4"(100mm) |
| W033003 | 6"(150mm) | 5"(125mm) |
| W033004 | 8"(200mm) | 6"(150mm) |



No. W033005

★STOCK

BENCH VISE SWIVEL WITH ANVIL AND SWIVEL BASE

- Material: ductile iron

| Item# | Jaw Width | Jaw Opening |
|---------|-----------|-------------|
| W033005 | 4"(100mm) | 3"(75mm) |
| W033006 | 5"(125mm) | 4"(100mm) |
| W033007 | 6"(150mm) | 5"(125mm) |
| W033008 | 8"(200mm) | 6"(150mm) |



WORKPRO®

STORAGES AND TOOL SETS

TOOL BAG

TOOL BOX

TOOL CABINET

TOOL TROLLEY

TOOL SHELVING

TOOL SET



18" CLOSE TOP WIDE MOUTH STORAGE BAG

★STOCK

- Adjustable strap allows for easy access to contents
- Ideal for carrying hand tools and other small to medium items
- Top zipped wide open mouth for easy approaching tools
- Outer mesh pocket stores personal belongings, small tools & accessories

W081023

18"(460x220x240mm)



No. W081021

★STOCK
HOT

14" CLOSE TOP WIDE MOUTH STORAGE BAG

- Adjustable strap allows for easy access to contents
- Ideal for carrying hand tools and other small to medium items
- Top zipped wide open mouth for easy approaching tools
- Outer mesh pocket stores personal belongings, small tools & accessories



No. W081022

★STOCK
HOT

16" CLOSE TOP WIDE MOUTH STORAGE BAG WITH WATER PROOF RUBBER BASE

- Adjustable strap allows for easy access to contents
- Ideal for carrying hand tools and other small to medium items
- Rubber foam bottom keeps bag sturdy, and protects contents from hard falls
- Top zipped wide open mouth for easy approaching tools
- Outer mesh pocket stores personal belongings, small tools & accessories



MULTI-FUNCTION TOOL BACKPACK

★STOCK

No. W081065

- 600D nylon material
- Impact Waterproof Molded Base - Protects contents and allows backpack to stand up
- Large front pocket easily fits fish tapes, Wide opening fits power tools, hand tools, flashlights, etc.
- Back storage bay for laptop (15"), tablet and business accessories
- Maximum load weight: 65 lbs



No. W081074

★STOCK

MULTI-FUNCTION TOOL BACKPACK

- 16" Tool Backpacks with Handbag
- 60 pockets and 15 belts for organize variety of tools
- Fully molded bottom protects from the elements
- Padded back and shoulder straps provide more comfortable
- Pull out insert comes with



No. W081070

★STOCK

15" CENTER TRAY COLLAPSABLE TOOL STORAGE BAG

- Open-top design for easy access to contents
- Reinforced handle protector for comfortable and maximum durability
- Multi-components storage case included for hardware storage
- Outer mesh pocket stores personal belongings, small tools & accessories
- 14 Multi-use pockets inside, and 8 outside organize tools and accessories



SAFE CASE

- Made from ultra high impact plastic
- Water-proof and shock-proof



W083009



W083010



W083011



W083012

| | |
|---------|----------------------|
| W083009 | 10.5"(260x245x175mm) |
| W083010 | 14"(345x290x145mm) |
| W083011 | 18"(460x360x175mm) |
| W083012 | 20.5"(560x430x215mm) |

No. W083015

★**STOCK**

PLASTIC TOOL BOX

- Sturdy carrying handle
- High impact plastic
- Lift out carry tray
- Built-in organization compartments



| | |
|---------|-----------------------|
| W083015 | 16"(360x170x205MM) |
| W083016 | 20"(455x200x255MM) |
| W083017 | 22.5" (360x170x205MM) |

No. W083004

PLASTIC TOOL BOX

- Sturdy carrying handle
- High impact plastic
- Lift out carry tray
- Built-in organization compartments



| | | |
|---------|----------------------|----------------|
| W083004 | 16.5"(412x214x188mm) | ★ STOCK |
| W083005 | 18.5"(472x250x224mm) | |
| W083006 | 21"(536x292x271mm) | |
| W083007 | 23.5"(600x340x317mm) | |
| W083008 | 26.5"(670x393x370mm) | |

WORKPRO®

TOOL SETS

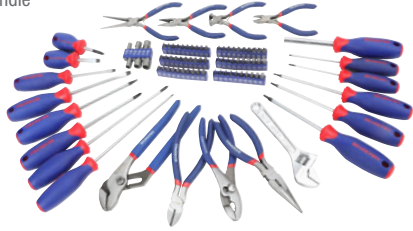


No. W009045

90PC TOOL SET

- 1PC 6" diagonal pliers
- 1PC 6" slip joint pliers
- 1PC 6" long nose pliers
- 1PC 8" groove joint pliers
- 1PC 6" adjustable wrench
- 1PC mini diagonal pliers
- 1PC mini end cutting pliers
- 1PC mini long nose pliers
- 1PC mini needle nose pliers
- 13PC screwdriver:
 - Slotted: 1/8" x 3", 3/16" x 3", 3/16" x 6", 1/4" x 1-1/2", 1/4" x 4"; Phillips: PH0 x 3", PH1 x 6", PH2 x 1-1/2", PH2 x 4"; Square: S1 x 4", S2 x 4"

- Star: T10 x 4", T20 x 4"
- 6PC socket set: 3/16", 1/4", 9/32", 5/16", 11/32", 3/8"
- 60PC bits with holder
- 1PC 60mm extension bits holder
- 1PC magnetic handle



No. W009040

★STOCK

34PC TOOL SET

- 5PC precision screwdriver set
- 1PC 9" torpedor lever
- 7.5m tape measure
- 1PC quick-opening retractable knife
- 1PC 8" wrench
- 16oz fibreglass hammer
- 20PC bits
- Magnetic holder
- 1PC 6" long nose pliers
- 1PC 6" diagonal pliers
- 1PC 6" slip joint pliers



No. W009062

★STOCK

75PC PINK TOOL SET

- 10PC SK5 knife blades
- 1PC safety knife
- 1PC 8-1/2" scissors
- 5PC precision screwdriver set
- 40PC 1" bits with holder
- 1PC magnetic screwdriver bit holder
- 8PC SAE hex keys
- 1PC 6"(150mm) Slip joint pliers
- 1PC 6"(150mm) long nose pliers
- 1PC 6"(152mm) adjustable wrench
- 1PC 12oz claw hammer
- 1PC 10ft auto-lock tape measure with SAE and metric marking blade

- 1PC 9" (225mm) magnetic torpedo level
- 1PC 3AAA 9LED flashlight
- 1CASE 32PC hardware
- 1PC 14" tool bag



No. W009013

★STOCK

56PC SCREWDRIVER AND BITS SET

- 8PC precision screwdrivers, CR-V, chrome plated, size: Slotted: 1.5x40, 2.0x40, 2.5x40
Phillips: PH0x40, PH00x40, PH1x40mm
Torx: T9, T10
- 40PC 25mm CR-V bits with 4 holders, size: Pozzi: PZ0, PZ1x2, PZ2x5, PZ3x2
Slotted: 3, 4, 5, 5.5, 6, 7
Phillips: PH0, PH1, PH2, PH3
Square: S0x2, S1x2, S2x4, S3x2
Hex: H1.5, H2.5, H3, H4, H5, H6
Torx: T10, T15, T20, T25
- 6PC screwdrivers, CR-V, chrome plated: Slotted: 5x75mm, 6x100mm, 8x150mm



- Phillips: PH1x75mm, PH2x100mm, PH3x150mm
- 1PC bit driver, carbon steel blade, chrome plated
- 1PC blow molded case

No. W009014

★STOCK

28PC HOUSEHOLD TOOL KIT

- 1PC 6" long nose pliers, carbon steel, double injection handle
- 1PC 6" diagonal pliers, carbon steel, double injection handle
- 1PC 6" adjustable wrench, carbon steel with chrome plated
- 1PC 5-1/2" scissors, stainless steel blade
- 1PC 18mm snap-off knife
- 3PC 18mm snap-off knife handles
- 1PC 8oz fiberglass handle claw hammer
- 1PC 3m tape measure
- 2PC screwdrivers, CR-V blade, chrome plated: Phillips: PH1x100mm, 3x75mm
- 1PC magnetic bit driver
- 16PC 1" CR-V bits, size: Slotted: 3, 5, 6, 7mm
Torx: T10, T15
Hex: H4, H5
Phillips: PH0, PH1, PH2, PH3
Pozzi: PZ0, PZ1, PZ2, PZ3
- 1PC 9" torpedo level
- 1PC blow molded case



No. W003020

★STOCK

52PC TOOL AND SOCKET SET

- 1PC 6" long nose pliers, carbon steel, double dipping handle
- 1PC 6" diagonal pliers, carbon steel, double dipping handle
- 1PC 5" locking pliers, carbon steel, nickel plated
- 9PC folding hex keys, carbon steel, black finish, size: 5/64", 3/32", 7/64", 1/8", 9/64", 5/32", 3/16", 7/32", 1/4"
- 1PC 3/8" Dr. ratchet handle
- 1PC spinner disk
- 1PC 3" extension bar, carbon steel, chrome plated
- 1PC 3/8" Dr. to 1/4" Dr. adaptor
- 28PC 1/4" Dr. sockets, carbon steel, heat treatment, chrome plated, metric size: 4, 4.5, 5, 5.5, 6, 6.5, 7, 7.5, 8, 9, 10, 11, 12, 13mm; SAE size: 5/32", 3/16", 7/32", 1/4", 9/32", 5/16", 11/32", 3/8", 13/32", 7/16", 15/32", 1/2", 17/32", 9/16"
- 3PC 1/4" Dr. sockets (8pt.): 1/4", 5/16", 3/8"
- 4PC 3/8" Dr. sockets, metric: 14mm, 15mm; SAE: 5/8", 11/16"
- 1PC blow molded case



No. W009016

★**STOCK**

77PC GENERAL PURPOSE TOOL SET

- 1PC 9" torpedo level
- 1PC 3m tape measure
- 1PC junior hacksaw, high carbon steel blade
- 1PC 12" stainless steel ruler
- 9PC hex key set
- 1PC 18mm snap-off knife
- 3PC 18mm 65Mn blades in a plastic box
- 1PC 6" long nose pliers
- 1PC 6" combination pliers
- 1PC 6" adjustable wrench
- 1PC 16oz fiberglass claw hammer
- 4PC screwdrivers
- 1PC magnetic bit driver
- 40PC 1" CR-V bits
- 1PC 8" half round file
- 6PC precision screwdrivers
- 1PC 100-250V voltage tester
- 2PC mini spring clamps
- 1PC blow molded case



No. W009022

125PC 3-DRAWER HOME TOOL SET

- 8PC Metric hex keys
- 8PC SAE hex keys
- 1PC 3/8" Dr. ratchet handle
- 1PC 3/8" Dr. x 3" extension bar
- 1PC 3/8" Dr. x 5/8" spark plug socket
- 1PC 3/8"(F)x 1/4"(M) adaptor
- 9PC 1/4" Dr. 6pt. SAE sockets
- 12PC 3/8" Dr. 6pt. sockets (SAE and Metric)
- 1PC 6" adjustable wrench
- 1PC 6" long nose pliers
- 1PC 6" diagonal pliers
- 1PC 6" slip joint pliers
- 1PC magnetic bit driver
- 20PC 1" CR-V bits with holder
- 1PC retractable utility knife
- 10PC knife blades with plastic case
- 1PC 8oz claw hammer
- 1PC 10FT. tape measure
- 1PC 9" magnetic torpedo level (3 vials)
- 2PC stubby screwdrivers: 1/4 x 1-1/2", PH1 x 1-1/2"
- 1PC 5-1/2" scissors
- 1PC 3/4" x 30FT. electrical tape
- 1PC 9mm snap-off knife
- 40PC cable ties



No. W009028

★**STOCK**
HOT

239PC MECHANIC TOOL KIT

- 1PC 3/8" Dr. ratchet handle
- 13PC 3/8" Dr. sockets: 1/4", 5/16", 11/32", 3/8", 7/16", 15/32", 1/2", 9/16", 5/8", 13/16", 11/16", 3/4", 7/8"
- 11PC 1/4" Dr. sockets: 5/32", 3/16", 7/32", 1/4", 9/32", 5/16", 11/32", 3/8", 7/16", 15/32", 1/2"
- 4PC 1/4" deep sockets: 3/16", 1/4", 9/32", 5/16"
- 4PC 3/8" deep sockets: 5/16", 3/8", 7/16", 1/2"
- 1PC 3/8" Dr.(F) x 1/4", Dr. (M) adaptor
- 1PC 1/4" Dr. x 50mm extension bar
- 1PC 3/8" Dr. x 70mm extension bar
- 1PC 1/4" Dr. sliding bar
- 11PC metric CR-V hex key set: 1.27, 1.5, 2, 2.5, 3, 3.5, 4, 4.5, 5, 5.5, 6mm
- 11PC SAE CR-V hex key set: 0.05", 1/16", 5/64", 3/32", 7/64", 1/8", 9/64", 5/32", 3/16", 7/32", 1/4"
- 1PC magnetic bits holder handle
- 60PC 1" CR-V bits
- 6PC nut drivers: 3/16", 1/4", 9/32", 5/16", 11/32", 3/8"
- 8PC combination wrenches: 1/4", 5/16", 3/8", 7/16", 1/2", 9/16", 5/8", 11/16"
- 1PC 8" adjustable wrench
- 1PC 7" combination pliers
- 1PC 6" long nose pliers
- 1PC 10" groove joint pliers
- 6PC screwdrivers:
Slotted: 3/16"x3", 1/4"x4"

Phillips: PH0x3", PH2x4"
Square: S1x4", S2x4"

- 1PC crimping tools
- 55PC terminals
- 1PC 18mm snap-off knife
- 20PC cable ties
- 1PC mini hacksaw
- 6PC precision screwdrivers: 1.4, 2.0, 2.4, 3.0, PH0, PH1
- 10PC 18mm snap-off knife blades with plastic box
- 1PC metal box



No. W009030

★**STOCK**

111PC TOOL KIT WITH ALUMINUM TROLLEY

- 1PC 300mm steel ruler
- 1PC junior saw
- 3PC saw blades
- 1PC 160mm combination pliers
- 1PC 160mm diagonal cutting pliers
- 1PC 240mm box joint pliers
- 9PC hex key set: 1/16", 5/64", 3/32", 1/8", 5/32", 3/16", 1/4", 5/16", 3/8"
- 1PC 3m tape measure
- 2PC screwdrivers: 1/4"x4", PH2x4"
- 1PC magnetic bit holder with TPR handle
- 6PC precision screwdrivers
- 40PC 1" CR-V bit set
- 1PC 3/8" Dr. ratchet handle
- 1PC 1/4" Dr. sliding T-bar
- 1PC 3/8" Dr. 75mm extension bar
- 1PC 3/8" Dr. x 21mm spark socket
- 1PC 3/8" Dr. to 1/4" Dr. socket adaptor
- 1PC 1/4" Dr. bit adaptor
- 8PC 1/4" Dr. sockets: 4, 4.5, 5, 5.5, 6, 7, 8, 9mm
- 9PC 3/8" Dr. sockets: 10, 11, 12, 13, 14, 15, 17, 18, 19mm

- 1PC 18mm snap-off knife
- 10PC 18mm snap-off knife blades with plastic box
- 1PC 450g hammer with fiberglass handle
- 8PC combination wrenches: 7, 8, 9, 10, 11, 12, 13, 14mm
- 1PC 225mm torpedo level



No. W009044

NEW

**★STOCK
HOT**

408PC MECHANICS TOOL SET WITH 3DRAWER HEAVY METAL BOX

- 1PC utility knife
- 20PC SK5 utility knife blades
- 5PC Screwdriver 3/16"×4", 1/4"×6", ph2×1-1/2", ph1×3", ph2×4"
- 1PC magnetic screwdriver handle
- 6PC precision screwdriver
- 60PC 1" CR-V bits with holder
- 11PC hex key , metric
- 11PC hex key, SAE
- 1PC 6" long nose pliers
- 1PC 6" diagonal cutting pliers
- 1PC 6" combination pliers
- 1PC 16oz ball pein hammer
- 1PC 7.5m (25ft) tape measure
- 3PC quick-release ratchet handle: 1/4", 3/8", 1/2"
- 1PC 8" adjustable wrench, CR-V
- 8PC combination wrench: ,metric, 8mm, 10m-11mm, 12mm, 13mm, 14mm, 15mm, 17mm
- 8PC combination wrench , SAE, 1/4", 5/16", 3/8", 7/16", 1/2", 9/16", 5/8", 3/4"
- 10PC 1/4" CR-V socket ,metric, 6pt :5/32" 3/16", 7/32", 1/4", 9/32", 5/16", 11/32", 3/8", 7/16", 1/2"
- 10PC 1/4" CR-V socket ,SAE, 6pt: 4mm ,5mm , 6mm , 7mm , 8mm ,9mm ,10mm , 11mm ,12mm ,13mm
- 10PC 3/8" CR-V socket ,metric, 6pt :1/4", 5/16", 3/8", 7/16", 1/2", 9/16", 5/8", 11/16", 3/4", 13/16"
- 11PC 3/8" CR-V socket ,SAE, 6pt: 7mm ,8mm , 9mm ,10mm ,11mm ,12mm ,13mm ,14mm ,15mm ,17mm ,19mm ,
- 8PC 3/8" CR-V socket ,metric, ,12pt: 5/16" 3/8, 7/16", 1/2", 9/16", 5/8", 11/16", 3/4",
- 11PC 3/8" CR-V socket ,SAE, 12pt: 7mm ,8mm , 9mm ,10mm ,11mm ,12mm ,13mm ,14mm ,15mm ,17mm ,19mm ,
- 6PC 1/2" CR-V socket ,metric, 6pt: 1/2", 9/16" 5/8", 11/16", 3/4", 7/8",
- 6PC 1/2" CR-V socket ,SAE, 6pt: 14mm ,15mm 17mm ,18mm ,19mm ,21mm ,
- 2PC adaptor: 7/8"×1/4", 1/2"×3/8"
- 4PC extension bar: 1/4"×3", 3/8"×3", 3/8"×6", 1/2"×5",
- 2PC spark plug socket: 3/8"×13/16", 3/8"×5/8"
- 1PC 8" crimping pliers
- 55PC terminals
- 1PC wire brush
- 40PC cable tie, 2.5"×120mm
- 90PC hardware with case
- 1PC metal box



No. W003025

★**STOCK
HOT**

123PC SOCKET SET

- 3PC CR-V quick-release ratchet handles: 1/4", 3/8", 1/2"
- 10PC 1/4" Dr. CR-V sockets: 4, 5, 6, 7, 8, 9, 10, 11, 12, 13mm
- 4PC 1/4" Dr. CR-V deep sockets: 8, 9, 10, 12mm
- 11PC 3/8" Dr. CR-V sockets: 9, 10, 12, 13, 14, 15, 16, 17, 18, 19mm
- 4PC 3/8" Dr. CR-V deep sockets: 13, 14, 15, 17mm
- 8PC 3/8" Dr. E-style CR-V sockets: E8, E10, E11, E12, E14, E16, E18, E20mm
- 7PC 1/2" Dr. CR-V sockets: 20, 21, 22, 24, 27, 30, 32mm
- 3PC CR-V universal joints: Dr. 1/4", 3/8", 1/2"
- 2PC CR-V adaptors: 1/2" Dr. (M) x 3/8" Dr. (F), 1/4" Dr. (M) x 3/8" Dr. (F)
- 1PC 1/4" Dr. CR-V coupler
- 1PC 1/4" Dr. CR-V spinner handle
- 17PC 3/8" Dr. CR-V bits sockets:
Torx: T20, T30, T40, T45, T50, T55, T60,
Flathead: FD5.5, FD6.5
Phillips: PH1, PH2
Pozi: PZ1, PZ2
Hex: H3, H4, H5, H6
- 18PC 25mm S2 screwdriver bits with holder
- 3PC 3/8" Dr. CR-V spark plug sockets: 14mm, 16mm, 21mm
- 11PC CR-V combination wrenches: 8, 9, 10, 11, 12, 13, 14, 16, 17, 18, 19mm
- 5PC CR-V extension bars: 1/4" Dr.x50mm,

- 3/8"Dr. x 75mm, 3/8"Dr. x 150mm, 1/2" Dr. x125mm, 1/2"Dr. x 250mm
- 1PC 1/2" Dr. x250mm CR-V flex handle
- 2PC screwdrivers: 6 x 100mm, PH2 x 100mm
- 1PC 1/2"Dr. oil filter wrench
- 1PC voltage tester
- 1PC CR-V 12.5mm socket for cover of cylinder: T52x100L
- 9PC CR-V long hex key set: 1.5, 2, 2.5, 3, 4, 5, 6, 8, 10mm
- 1PC blow molded case



No. W009036

★**STOCK
HOT**

156PC HOME REPAIRING TOOL SET

- 1PC 16" zip-top tool bag
- 1PC 9" plastic torpedo level
- 8PC Metric hex key set
- 8PC SAE hex key set
- 1PC magnetic bit holder
- 60PC 1" CR-V bits
- 6PC nut drivers
- 1PC 3m tape measure
- 1PC 6" mini saw
- 1PC 7" curved jaw locking pliers
- 1PC 7-1/2" diagonal pliers
- 1PC 8" long nose pliers
- 1PC 8" adjustable wrench
- 1PC 8" groove-joint pliers
- 6PC combination wrenches with clip
- 6PC precision screwdriver set
- 1PC utility knife
- 10PC utility knife blade set in plastic box
- 40PC cable ties
- 1PC 16oz tubular claw hammer



WORKPRO®



AUTOMOTIVE TOOLS

No. W004400

3PC WIRE BRUSH



- Lightweight polycast handle
- 1PC nylon bristle brush
- 1PC brass bristle brush
- 1PC stainless steel bristle brush

W004400 7"

No. W113004

★STOCK

2LB MAGNETIC PICK UP TOOL



- Stainless steel antenna
- Multi-angle ball joint neck
- Powerful magnet
- Extends up to 650mm

W113004 2LB/650mm

No. W113006

★STOCK

TELESCOPING INSPECTION MIRROR



- 2" round mirror
- Stainless steel antenna
- Multi-angle ball joint neck

| | |
|---------|--------------|
| W113005 | 17.5"(440mm) |
| W113006 | 36"(920mm) |

No. W114017

★STOCK

8-IN-1 DIGITAL TIRE GAUGE



- Lanyard, magnet for easy hanging
- Includes: tire pressure gauge, LED flashlight, glass breaker, flashing emergency light, seat belt cutter, tire tread depth meter, tire pressure release, magnet

No. W114018

★STOCK

SWIVEL OIL FILTER WRENCHES



- The one-inch wide steel band
- The dimples in the band bite into the filter for safe and easy non-slip removal
- Great for both the DIYer and the professional
- Comfortable vinyl coated handle

| | |
|---------|----------------|
| W114018 | 2-3/4"~3-1/4" |
| W114019 | 3-7/16"~3-3/4" |
| W114020 | 4-1/8"~4-1/2" |

No. W114006

OIL FILTER CAP WRENCH

- Specially designed end cap wrench removes hard-to-reach multi-flute oil filters
- Precision-stamped, deep-reach cap wrench is constructed for a tight fit to remove original filters & filter housing
- Won't damage or crush the filter
- Heat-treated for long life
- Fits 3/8" ratchet and extensions



| | | |
|---------|---------|--------|
| W114006 | 74/76mm | |
| W114007 | 76mm | ★STOCK |
| W114008 | 76mm | |
| W114009 | 93mm | |
| W114010 | 65/67mm | ★STOCK |
| W114011 | 68mm | |
| W114012 | 80mm | |
| W114013 | 74mm | |

No.W112008

SHOP ROLLER SEAT STOOL WITH TOOL TRAY

- Added bracing under seat for extra strength
- Heavy duty construction
- Vinyl padded seat
- 4PC 2.5" castors
- Max. load capacity: 150kg



W112008 355x440x365mm

No.W112004

SHOP ROLLER SEAT STOOL

- Added bracing under seat for extra strength
- Heavy duty construction
- Vinyl padded seat
- 100mm heavy duty castors
- Max. load capacity: 150kg



W112004 355x440x365mm

No.W111001

6-WHEEL PLASTIC CREEPER



- Heavy duty one-piece, low-profile creeper features a body fitting design to provide optimum comfort & maximum durability
- 6 extra ball bearing nylon castors

W111001 36" ★STOCK
W111003 40"

No.W111002

STEEL RAIL CREEPER



- Economical all steel durable creeper
- 6 rotating castors for effortless movement in any direction
- Padded bench with head rest
- Powder coated finish

W111002 40" ★STOCK

No.W111005

MULTI-FUNCTION FOLDABLE STEEL RAIL CREEPER

- Steel frame with powder coating finish
- Soft padded seat for comfort
- Easily converts in a roller seat stool
- 6PC 2" castors
- Max. load capacity: 110kg

★STOCK



W111005 36"(925x420x90mm)

No. W121001

★STOCK

3.6V AUTO-LOADING LITHIUM-ION SCREWDRIVER

- 1300mAh Lithium-ion battery
- 1/4" hex driver
- No-load speed: 210 RPM (forward/ reverse)
- Max. torque: 6 N-m
- Built-in LED work light
- Spindle lock-allows the tool continue its work when battery is empty
- 2 pack bits cartridge included(12PC bits)



| | | |
|---------|----------|-----|
| W121001 | 230V | VDE |
| W121003 | 100-240V | UL |

No. W121002

★STOCK

3.6V FAVOURABLE LITHIUM-ION SCREWDRIVER

- 1300mAh Lithium-ion battery
- 1/4" hex driver
- No load speed: 220 RPM (forward/ reverse)
- Max. torque: 3.5 N-m
- Built-in LED work light
- Spindle lock - allows the tool continue its work when battery is empty
- 10PC bits included



| | | |
|---------|----------|-----|
| W121002 | 230V | VDE |
| W121004 | 100-240V | UL |

No. W004511

2" MINI SAW

- Power: 350W
- Voltage: 110V/230V~50Hz/60Hz
- No load speed: 4000 RPM
- Adjustable cutting depth: 0-1/2" (0-12 mm)
- Sliding switch for safety
- Suitable for cutting various materials by using different saw blade , wood, plastic, tile, slate, aluminum, etc.
- Dust extraction adaptor
- Accessories:
2HSS saw blade (60T/44T)
1TCT blade (18T) 1 Diamond blade (G50)
1 torx key & 1 U key,
1 outer flange 1 soft tube (6.2")



W004511 2"(51mm)

No. W004500

★STOCK

152PC ROTARY TOOL KIT

- 1PC rotary tool
- 126PC rotary tool accessories
- 1PC magnetic bowl
- 4PC mini pliers
- 2PC gravers
- 12PC blades
- 6PC precision screwdrivers
- 1PC carrying bag



No. W124018

120PC COMBINATION DRILL AND BIT SET

- 3PC titanium coated HSS 4341 twist drills with hex shank: 1/16", 5/64", 3/32", 7/64", 1/8", 9/64", 5/32", 3/16", 7/32", 1/4", 9/32", 5/16", 3/8"
- 4PC masonry drills with hex shank: 5/32", 7/32", 1/4", 5/16"
- 5PC flat wood bits with hex shank: 1/4", 3/8", 1/2", 5/8", 3/4"
- 5PC nut drivers: 1/4", 5/16", 3/8", 7/16", 1/2"
- 3PC socket adaptors: 1/4", 3/8", 1/2"
- 20PC 1" CR-V screwdriver bits
- 12PC 2" CR-V screwdriver bits
- 12PC 3" CR-V screwdriver bits
- 14PC sockets: 3/8", 7/16", 1/2", 9/16", 5/8", 11/16", 3/4", 12mm, 13mm, 14mm, 15mm, 16mm, 17mm, 19mm
- 1PC 58mm magnetic bit holder
- 1PC 78mm magnetic bit holder
- 1PC 78mm stubby clear magnetic screw guide
- 1PC 120mm clear magnetic screw guide



No. W124015

★STOCK

176PC COMBINATION DRILL AND DRIVE SET

- 30PC titanium coated high speed drill bits: 1.5x2, 2.0x3, 2.5x3, 3.0x3, 3.2x3, 3.5, 4.0x3, 4.5, 4.8x3, 5.0, 5.5x3, 6.0, 6.5x3
- 9PC flat drill bits: 10, 11, 12, 14, 16, 18, 20, 22, 25mm
- 11PC masonry drill bits: 3.0x2, 4.0x2, 5.0x2, 6.0x2, 8.0x2, 10mm
- 5PC 300mm masonry drill bits: 4.0, 5.0, 6.0, 8.0, 10.0mm
- 17PC wood-boring drill bits: 3.0, 3.2, 3.5, 4.0, 4.5, 4.8, 5.0, 5.5, 6.0, 6.5, 7.0, 7.5, 8.0, 8.5, 9.0, 9.5, 10.0mm
- 32PC 25mm screwdriver bits
- 24PC 50mm screwdriver bits
- 20PC 65mm double end screwdriver bits: Phillips: PH1x4, PH2x4, PH3x4 Slotted: 5mmx4, 6mmx4
- 18PC nut driver sockets: 5mmx2, 6mmx2, 7mmx2, 8mmx2, 9mmx2, 10mmx2, 11mmx-2, 12mmx2, 13mmx2
- 4PC hole saws with hole saw adaptor: 32, 38, 45, 54mm
- 1PC hole saw adaptor
- 1PC bit holder
- 1PC counter sink
- 1PC metal ruler
- 1PC ratchet handle
- 1PC center punch



276PC ROTARY TOOL ACCESSORY SET

No. W124003

★**STOCK
HOT**



- 52PC sanding bands
- 40PC sanding discs
- 40PC sanding discs with back adhesive
- 36PC emery cut-off wheels
- 1PC polishing compound
- 16PC fiberglass cut-off wheels
- 4PC flap wheels
- 8PC felt polishing wheels
- 1PC felt tip
- 6PC silicon carbide grinding wheels
- 6PC aluminum oxide grinding wheels
- 6PC white aluminum grinding wheels
- 2PC diamond wheels
- 1PC dressing stone
- 3PC collets
- 1PC wrench
- 2PC rubber emery wheels
- 12PC diamond cutters
- 9PC HSS twist drill bits
- 3PC mandrel wheels
- 3PC sanding shanks
- 1PC sucking disc
- 6PC rubber grinding stones
- 4PC silicon carbide grinding stones
- 6PC aluminum oxide grinding stones
- 1PC brass wheel brush
- 3PC stainless steel brushes
- 3PC bristle brushes
- 1PC plastic case



WORKPRO®

LASER MEASURE

LASER MEASURE

CROSS LINE LASER LEVEL

360-DEGREE CROSS

LINE LASER



No. W068021

135FT/40M LASER MEASURE

- Measure reference front and back, unit change, single measurement, continuous measurement, area and volume calculations
- Multi function measure: addition/subtraction, area/volume, distance, length, continuous measurement
- Inverted backlit LCD display improves readability
- Ergonomic soft grip prevents tool from easy drop, bump

LASER
TECHNOLOGY
Laser Measure 

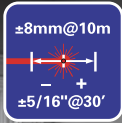


| | |
|-----------|-------------------------|
| Range | 8in-135ft(0.21-40m) |
| Accuracy | ±1/8" (3 mm) |
| Unit | Metric and Imperial |
| Batteries | 2AAA alkaline batteries |
| Tool size | 11.2cm x 4.4cm x 2.5cm |
| Package | Sandwich |

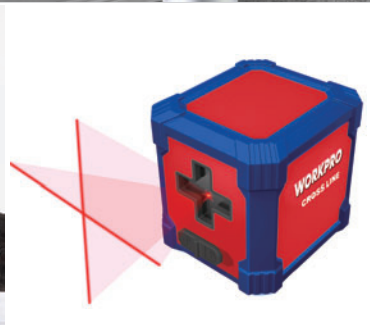


CROSS LINE LASER LEVEL

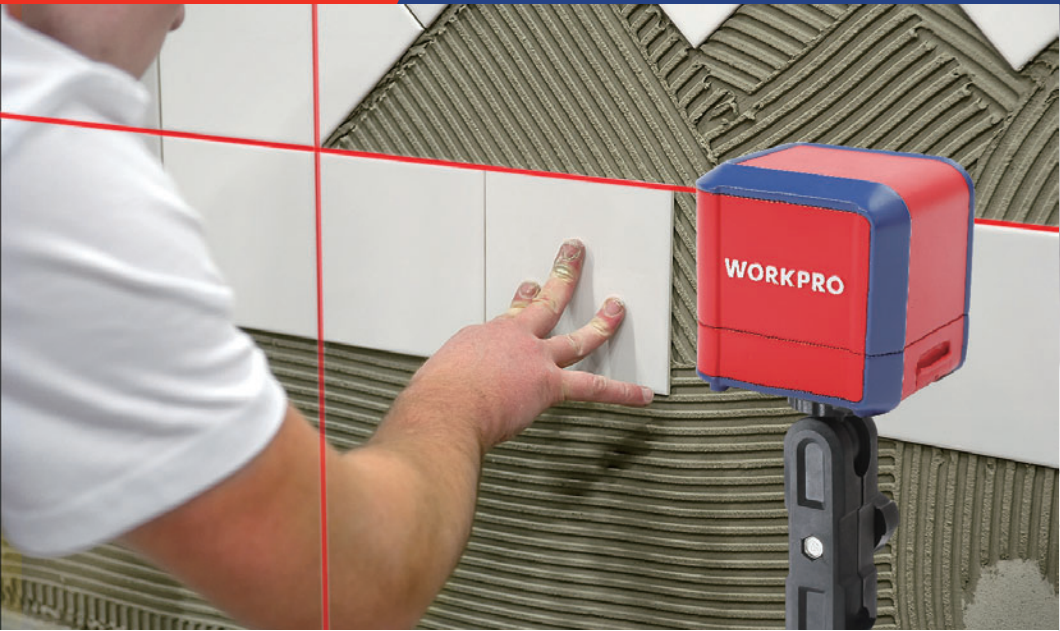
No. W068008



★STOCK



- Self Leveling: projects bright horizontal & vertical lines onto flat surfaces and levels in few seconds
- Laser blinking reminds out-of-level
- Able to be used at any angle for various applications
- Compact, lightweight design
- Can be wall or tripod mounted for quick and easy setup with ¼"-20 screw (clamp included, wall mount and tripod not included)
- Leveling range: ±4 degrees



No. W068014

CROSS LINE LASER LEVEL

- Self Leveling: projects bright horizontal & vertical lines onto flat surfaces and levels in few seconds
- Laser blinking reminds out-of-level
- Able to be used at any angle for various applications
- Compact, lightweight design
- Can be wall or tripod mounted for quick and easy setup with 1/4" -20 screw (clamp included, wall mount and tripod not included)
- Leveling range: ± 4 degrees

★**STOCK**



LASER
TECHNOLOGY

Self Leveling Cross Line Laser 



| ITEM NO. | PAGE NO. | ITEM NO. | PAGE NO. | ITEM NO. | PAGE NO. | ITEM NO. | PAGE NO. | ITEM NO. | PAGE NO. |
|----------|----------|----------|----------|----------|----------|----------|----------|----------|----------|
| W000009 | 4 | W001800 | 73 | W004507 | 151 | W011032 | 7 | W014029 | 22 |
| W000203 | 13 | W001801 | 73 | W004508 | 149 | W011033 | 8 | W014030 | 22 |
| W000302 | 20 | W002100 | 76 | W004511 | 148 | W011034 | 6 | W014031 | 21 |
| W000304 | 20 | W002400 | 79 | W009002 | 131 | W011034 | 9 | W014031 | 22 |
| W000305 | 21 | W002900 | 83 | W009012 | 131 | W012003 | 14 | W014032 | 21 |
| W000309 | 21 | W002901 | 81 | W009013 | 132 | W012004 | 14 | W014033 | 21 |
| W000311 | 21 | W003000 | 101 | W009014 | 132 | W012005 | 14 | W014034 | 21 |
| W000313 | 21 | W003001 | 104 | W009016 | 134 | W012006 | 14 | W014047 | 22 |
| W000314 | 20 | W003020 | 132 | W009019 | 135 | W012007 | 14 | W014048 | 22 |
| W000315 | 23 | W003022 | 99 | W009021 | 131 | W012008 | 14 | W014050 | 23 |
| W000316 | 20 | W003023 | 99 | W009022 | 134 | W012009 | 14 | W014051 | 22 |
| W000317 | 20 | W003024 | 99 | W009024 | 133 | W012010 | 14 | W014052 | 23 |
| W000400 | 25 | W003025 | 140 | W009027 | 135 | W012011 | 14 | W014053 | 23 |
| W000800 | 39 | W003046 | 105 | W009028 | 136 | W012012 | 14 | W014055 | 23 |
| W000801 | 39 | W003048 | 99 | W009029 | 139 | W013003 | 13 | W014061 | 20 |
| W000802 | 48 | W003049 | 107 | W009030 | 136 | W013005 | 13 | W014070 | 16 |
| W000803 | 40 | W003050 | 106 | W009031 | 137 | W013006 | 11 | W014083 | 17 |
| W000806 | 40 | W003051 | 105 | W009033 | 129 | W013007 | 13 | W014084 | 17 |
| W000807 | 40 | W003057 | 106 | W009034 | 129 | W013008 | 13 | W015001 | 24 |
| W000809 | 129 | W003062 | 101 | W009035 | 129 | W013009 | 13 | W015002 | 24 |
| W000813 | 48 | W003066 | 141 | W009036 | 141 | W013010 | 11 | W015003 | 25 |
| W000814 | 48 | W003068 | 102 | W009037 | 139 | W013011 | 13 | W015004 | 25 |
| W000815 | 48 | W003069 | 103 | W009038 | 137 | W013012 | 10 | W015005 | 25 |
| W000824 | 39 | W003070 | 103 | W009039 | 141 | W013013 | 13 | W015006 | 26 |
| W000825 | 48 | W003071 | 103 | W009040 | 130 | W013015 | 10 | W015007 | 26 |
| W000828 | 48 | W003072 | 100 | W009044 | 138 | W013020 | 11 | W015008 | 26 |
| W000832 | 40 | W003078 | 101 | W009045 | 130 | W013022 | 9 | W015009 | 25 |
| W000833 | 39 | W003200 | 108 | W009062 | 130 | W013026 | 9 | W015011 | 26 |
| W000837 | 44 | W003201 | 108 | W009064 | 133 | W013027 | 9 | W015012 | 26 |
| W000839 | 41 | W003300 | 98 | W011001 | 2 | W013028 | 12 | W015013 | 26 |
| W000839 | 42 | W003302 | 98 | W011002 | 2 | W013029 | 12 | W015014 | 24 |
| W000848 | 46 | W003304 | 98 | W011003 | 4 | W014001 | 18 | W015015 | 25 |
| W000855 | 47 | W003306 | 97 | W011004 | 3 | W014002 | 18 | W015023 | 25 |
| W000900 | 49 | W003307 | 97 | W011005 | 3 | W014003 | 18 | W015027 | 24 |
| W000901 | 50 | W003308 | 97 | W011006 | 3 | W014004 | 18 | W016001 | 30 |
| W001300 | 64 | W003309 | 97 | W011007 | 2 | W014005 | 15 | W016002 | 30 |
| W001301 | 59 | W003315 | 98 | W011008 | 4 | W014006 | 18 | W016003 | 30 |
| W001302 | 59 | W003316 | 98 | W011009 | 4 | W014007 | 18 | W016004 | 31 |
| W001305 | 59 | W003317 | 99 | W011010 | 5 | W014009 | 19 | W016005 | 31 |
| W001306 | 59 | W003318 | 99 | W011011 | 4 | W014010 | 19 | W016007 | 31 |
| W001307 | 59 | W003321 | 98 | W011012 | 4 | W014011 | 19 | W016008 | 31 |
| W001308 | 65 | W003322 | 98 | W011013 | 4 | W014012 | 19 | W016009 | 31 |
| W001309 | 54 | W003500 | 125 | W011014 | 2 | W014013 | 19 | W016010 | 30 |
| W001310 | 64 | W003501 | 123 | W011017 | 3 | W014017 | 21 | W016011 | 30 |
| W001312 | 59 | W003502 | 125 | W011018 | 5 | W014018 | 21 | W016012 | 30 |
| W001313 | 59 | W003700 | 127 | W011020 | 4 | W014019 | 21 | W016013 | 30 |
| W001314 | 61 | W004140 | 115 | W011022 | 5 | W014020 | 22 | W016014 | 30 |
| W001316 | 64 | W004160 | 115 | W011028 | 5 | W014021 | 22 | W016015 | 30 |
| W001400 | 65 | W004161 | 115 | W011029 | 7 | W014023 | 21 | W016017 | 30 |
| W001401 | 65 | W004400 | 144 | W011030 | 8 | W014023 | 22 | W016018 | 30 |
| W001404 | 65 | W004500 | 148 | W011031 | 6 | W014028 | 22 | W016019 | 30 |
| W001407 | 67 | W004501 | 149 | | | | | W016020 | 30 |

| ITEM NO. | PAGE NO. | ITEM NO. | PAGE NO. | ITEM NO. | PAGE NO. | ITEM NO. | PAGE NO. | ITEM NO. | PAGE NO. |
|----------|----------|----------|----------|----------|----------|----------|----------|----------|----------|
| W021397 | 33 | W031017 | 60 | W031072 | 63 | W032011 | 66 | W041010 | 69 |
| W021403 | 34 | W031018 | 60 | W031073 | 63 | W032012 | 66 | W041011 | 69 |
| W021404 | 34 | W031019 | 60 | W031074 | 63 | W032013 | 66 | W041012 | 69 |
| W021405 | 34 | W031020 | 58 | W031075 | 63 | W032014 | 66 | W041013 | 69 |
| W021406 | 34 | W031021 | 60 | W031076 | 63 | W032015 | 66 | W041014 | 69 |
| W021407 | 41 | W031022 | 61 | W031077 | 62 | W032016 | 66 | W041015 | 69 |
| W021408 | 43 | W031023 | 61 | W031078 | 62 | W032017 | 66 | W041016 | 69 |
| W021483 | 47 | W031024 | 61 | W031079 | 62 | W032018 | 66 | W041017 | 69 |
| W022001 | 51 | W031025 | 61 | W031080 | 62 | W032022 | 67 | W041018 | 69 |
| W022002 | 49 | W031026 | 61 | W031081 | 62 | W032023 | 67 | W041019 | 69 |
| W022003 | 49 | W031027 | 61 | W031082 | 62 | W032024 | 67 | W041020 | 70 |
| W022004 | 49 | W031028 | 61 | W031083 | 64 | W032025 | 67 | W041021 | 70 |
| W022005 | 49 | W031029 | 61 | W031084 | 64 | W032026 | 67 | W041022 | 70 |
| W022006 | 49 | W031030 | 61 | W031088 | 54 | W032027 | 67 | W041023 | 70 |
| W022006 | 49 | W031031 | 61 | W031089 | 54 | W032028 | 67 | W041024 | 70 |
| W022007 | 50 | W031032 | 61 | W031091 | 58 | W032029 | 67 | W041027 | 70 |
| W022008 | 50 | W031033 | 61 | W031092 | 58 | W032030 | 67 | W041028 | 70 |
| W022009 | 50 | W031034 | 61 | W031093 | 64 | W032031 | 67 | W041029 | 70 |
| W022010 | 50 | W031035 | 61 | W031094 | 64 | W032032 | 67 | W041030 | 70 |
| W022011 | 50 | W031036 | 61 | W031095 | 64 | W032033 | 67 | W041031 | 70 |
| W022012 | 51 | W031038 | 61 | W031101 | 64 | W032034 | 67 | W041032 | 70 |
| W022013 | 51 | W031039 | 61 | W031102 | 64 | W032035 | 67 | W041033 | 70 |
| W022014 | 51 | W031040 | 61 | W031113 | 55 | W032036 | 67 | W041035 | 70 |
| W022015 | 51 | W031041 | 60 | W031137 | 55 | W032037 | 67 | W041038 | 72 |
| W022016 | 51 | W031042 | 60 | W031138 | 55 | W032045 | 66 | W041039 | 72 |
| W022017 | 51 | W031043 | 60 | W031139 | 56 | W032046 | 66 | W041041 | 72 |
| W022018 | 51 | W031044 | 60 | W031140 | 54 | W032047 | 66 | W041042 | 72 |
| W022019 | 50 | W031045 | 60 | W031176 | 57 | W033001 | 118 | W041046 | 72 |
| W022030 | 51 | W031046 | 60 | W031177 | 57 | W033001 | 118 | W041047 | 72 |
| W022031 | 51 | W031047 | 62 | W031178 | 57 | W033002 | 118 | W041049 | 72 |
| W022032 | 51 | W031048 | 62 | W031182 | 57 | W033002 | 118 | W041050 | 72 |
| W022033 | 51 | W031049 | 62 | W031183 | 57 | W033003 | 118 | W041051 | 72 |
| W023001 | 52 | W031050 | 62 | W031184 | 57 | W033003 | 118 | W041052 | 72 |
| W023002 | 52 | W031051 | 62 | W031222 | 63 | W033004 | 118 | W041053 | 72 |
| W023003 | 52 | W031052 | 62 | W031223 | 63 | W033004 | 118 | W041060 | 72 |
| W023004 | 52 | W031053 | 62 | W031224 | 63 | W033005 | 118 | W041061 | 72 |
| W024001 | 52 | W031054 | 62 | W031225 | 63 | W033005 | 118 | W041062 | 72 |
| W024002 | 52 | W031055 | 62 | W031226 | 63 | W033006 | 118 | W041087 | 70 |
| W031001 | 58 | W031056 | 62 | W031227 | 63 | W033006 | 118 | W041090 | 71 |
| W031003 | 58 | W031059 | 62 | W031228 | 63 | W033007 | 118 | W041091 | 71 |
| W031004 | 58 | W031060 | 62 | W031229 | 63 | W033007 | 118 | W042001 | 73 |
| W031005 | 58 | W031061 | 62 | W031230 | 63 | W033008 | 118 | W042002 | 73 |
| W031006 | 58 | W031062 | 62 | W032001 | 66 | W033008 | 118 | W043001 | 73 |
| W031007 | 58 | W031063 | 66 | W032002 | 66 | W041001 | 69 | W043002 | 73 |
| W031008 | 58 | W031064 | 63 | W032003 | 66 | W041002 | 69 | W043003 | 73 |
| W031009 | 58 | W031065 | 63 | W032004 | 66 | W041003 | 69 | W043004 | 73 |
| W031010 | 58 | W031066 | 63 | W032005 | 66 | W041004 | 69 | W043005 | 73 |
| W031011 | 58 | W031067 | 63 | W032006 | 66 | W041005 | 69 | W043006 | 73 |
| W031012 | 58 | W031068 | 63 | W032007 | 66 | W041006 | 69 | W043007 | 73 |
| W031013 | 58 | W031069 | 63 | W032008 | 66 | W041007 | 69 | W043008 | 73 |
| W031014 | 58 | W031070 | 63 | W032009 | 66 | W041008 | 69 | W043009 | 73 |
| W031015 | 58 | W031071 | 63 | W032010 | 66 | W041009 | 69 | W045001 | 72 |

| ITEM NO. | PAGE NO. | ITEM NO. | PAGE NO. | ITEM NO. | PAGE NO. | ITEM NO. | PAGE NO. | ITEM NO. | PAGE NO. |
|----------|----------|----------|----------|----------|----------|----------|----------|----------|----------|
| W073239 | 94 | W073308 | 95 | W073383 | 97 | W074037 | 86 | W074089 | 87 |
| W073240 | 94 | W073309 | 95 | W073385 | 97 | W074038 | 86 | W074090 | 87 |
| W073241 | 94 | W073310 | 95 | W073386 | 97 | W074039 | 86 | W074091 | 87 |
| W073242 | 94 | W073311 | 95 | W073387 | 97 | W074040 | 86 | W074092 | 88 |
| W073243 | 94 | W073312 | 95 | W073388 | 97 | W074041 | 86 | W074093 | 88 |
| W073244 | 94 | W073313 | 95 | W073433 | 96 | W074042 | 87 | W074094 | 88 |
| W073245 | 94 | W073314 | 95 | W073435 | 96 | W074043 | 87 | W074095 | 88 |
| W073246 | 94 | W073315 | 95 | W073437 | 96 | W074044 | 87 | W074096 | 88 |
| W073247 | 94 | W073316 | 95 | W073439 | 96 | W074045 | 87 | W074097 | 88 |
| W073248 | 94 | W073317 | 95 | W073442 | 96 | W074046 | 87 | W074098 | 88 |
| W073249 | 94 | W073318 | 95 | W073444 | 96 | W074047 | 87 | W074099 | 88 |
| W073250 | 94 | W073319 | 95 | W073445 | 96 | W074048 | 87 | W074100 | 88 |
| W073251 | 94 | W073320 | 95 | W073447 | 96 | W074049 | 87 | W074101 | 88 |
| W073252 | 94 | W073321 | 95 | W073448 | 96 | W074050 | 87 | W074102 | 88 |
| W073253 | 94 | W073322 | 95 | W073449 | 96 | W074051 | 87 | W074103 | 88 |
| W073254 | 94 | W073323 | 95 | W073450 | 96 | W074052 | 87 | W074104 | 88 |
| W073255 | 94 | W073324 | 96 | W074001 | 86 | W074053 | 87 | W074105 | 88 |
| W073256 | 94 | W073325 | 96 | W074002 | 86 | W074054 | 87 | W074106 | 88 |
| W073257 | 94 | W073327 | 96 | W074003 | 86 | W074055 | 87 | W074107 | 88 |
| W073259 | 94 | W073329 | 96 | W074004 | 86 | W074056 | 87 | W074108 | 88 |
| W073260 | 94 | W073331 | 96 | W074005 | 86 | W074057 | 87 | W074109 | 88 |
| W073261 | 94 | W073333 | 96 | W074006 | 86 | W074058 | 87 | W074110 | 88 |
| W073262 | 94 | W073336 | 96 | W074007 | 86 | W074059 | 87 | W074111 | 88 |
| W073263 | 94 | W073338 | 96 | W074008 | 86 | W074060 | 87 | W074112 | 88 |
| W073264 | 94 | W073339 | 96 | W074009 | 86 | W074061 | 87 | W074113 | 88 |
| W073265 | 94 | W073341 | 96 | W074010 | 86 | W074062 | 87 | W074114 | 88 |
| W073282 | 93 | W073342 | 96 | W074011 | 86 | W074063 | 87 | W074115 | 88 |
| W073283 | 93 | W073343 | 96 | W074012 | 86 | W074064 | 87 | W074116 | 88 |
| W073284 | 93 | W073344 | 96 | W074013 | 86 | W074065 | 87 | W074117 | 88 |
| W073285 | 93 | W073345 | 97 | W074014 | 86 | W074066 | 87 | W074118 | 88 |
| W073286 | 93 | W073346 | 97 | W074015 | 86 | W074067 | 87 | W074119 | 88 |
| W073287 | 93 | W073348 | 97 | W074016 | 86 | W074068 | 87 | W074120 | 88 |
| W073288 | 93 | W073350 | 97 | W074017 | 86 | W074069 | 87 | W074121 | 88 |
| W073289 | 93 | W073352 | 97 | W074018 | 86 | W074070 | 87 | W074122 | 88 |
| W073290 | 93 | W073354 | 97 | W074019 | 86 | W074071 | 87 | W074123 | 88 |
| W073291 | 93 | W073357 | 97 | W074020 | 86 | W074072 | 87 | W074124 | 88 |
| W073292 | 93 | W073359 | 97 | W074021 | 86 | W074073 | 87 | W074125 | 88 |
| W073293 | 93 | W073360 | 97 | W074022 | 86 | W074074 | 87 | W074126 | 88 |
| W073294 | 93 | W073362 | 97 | W074023 | 86 | W074075 | 87 | W074127 | 88 |
| W073295 | 93 | W073363 | 97 | W074024 | 86 | W074076 | 87 | W074128 | 88 |
| W073296 | 93 | W073364 | 97 | W074025 | 86 | W074077 | 87 | W074129 | 88 |
| W073297 | 93 | W073365 | 97 | W074026 | 86 | W074078 | 87 | W074130 | 88 |
| W073298 | 95 | W073366 | 96 | W074027 | 86 | W074079 | 87 | W074131 | 88 |
| W073299 | 95 | W073367 | 96 | W074028 | 86 | W074080 | 87 | W074132 | 88 |
| W073300 | 95 | W073368 | 97 | W074029 | 86 | W074081 | 87 | W074133 | 88 |
| W073301 | 95 | W073369 | 97 | W074030 | 86 | W074082 | 87 | W074134 | 88 |
| W073302 | 95 | W073371 | 97 | W074031 | 86 | W074083 | 87 | W074135 | 88 |
| W073303 | 95 | W073373 | 97 | W074032 | 86 | W074084 | 87 | W074136 | 88 |
| W073304 | 95 | W073375 | 97 | W074033 | 86 | W074085 | 87 | W074137 | 88 |
| W073305 | 95 | W073377 | 97 | W074034 | 86 | W074086 | 87 | W074138 | 88 |
| W073306 | 95 | W073380 | 97 | W074035 | 86 | W074087 | 87 | W074139 | 88 |
| W073307 | 95 | W073382 | 97 | W074036 | 86 | W074088 | 87 | W074140 | 88 |

| ITEM NO. | PAGE NO. | ITEM NO. | PAGE NO. | ITEM NO. | PAGE NO. | ITEM NO. | PAGE NO. | ITEM NO. | PAGE NO. |
|----------|----------|----------|----------|----------|----------|----------|----------|----------|----------|
| W103005 | 118 | W124017 | 151 | | | | | | |
| W103006 | 117 | W124018 | 150 | | | | | | |
| W103007 | 117 | W124054 | 153 | | | | | | |
| W103008 | 118 | W133019 | 153 | | | | | | |
| W103008 | 118 | W133020 | 153 | | | | | | |
| W103009 | 118 | W133175 | 161 | | | | | | |
| W103009 | 118 | W133176 | 161 | | | | | | |
| W111001 | 146 | | | | | | | | |
| W111002 | 146 | | | | | | | | |
| W111003 | 146 | | | | | | | | |
| W111004 | 146 | | | | | | | | |
| W111005 | 146 | | | | | | | | |
| W112001 | 145 | | | | | | | | |
| W112002 | 145 | | | | | | | | |
| W112003 | 145 | | | | | | | | |
| W112004 | 146 | | | | | | | | |
| W112007 | 145 | | | | | | | | |
| W112008 | 146 | | | | | | | | |
| W112011 | 145 | | | | | | | | |
| W113001 | 143 | | | | | | | | |
| W113002 | 143 | | | | | | | | |
| W113004 | 144 | | | | | | | | |
| W113005 | 144 | | | | | | | | |
| W113006 | 144 | | | | | | | | |
| W114001 | 143 | | | | | | | | |
| W114002 | 143 | | | | | | | | |
| W114003 | 143 | | | | | | | | |
| W114004 | 143 | | | | | | | | |
| W114005 | 143 | | | | | | | | |
| W114006 | 144 | | | | | | | | |
| W114007 | 144 | | | | | | | | |
| W114008 | 144 | | | | | | | | |
| W114009 | 144 | | | | | | | | |
| W114010 | 144 | | | | | | | | |
| W114011 | 144 | | | | | | | | |
| W114012 | 144 | | | | | | | | |
| W114013 | 144 | | | | | | | | |
| W114013 | 144 | | | | | | | | |
| W114014 | 145 | | | | | | | | |
| W114015 | 145 | | | | | | | | |
| W114016 | 145 | | | | | | | | |
| W114017 | 144 | | | | | | | | |
| W114018 | 144 | | | | | | | | |
| W114019 | 144 | | | | | | | | |
| W114020 | 144 | | | | | | | | |
| W121001 | 148 | | | | | | | | |
| W121002 | 148 | | | | | | | | |
| W121003 | 148 | | | | | | | | |
| W121004 | 148 | | | | | | | | |
| W124003 | 152 | | | | | | | | |
| W124004 | 151 | | | | | | | | |
| W124015 | 150 | | | | | | | | |

A series of 20 horizontal dashed lines for writing.

A series of 25 horizontal dashed lines for writing.

A series of 20 horizontal dashed lines for writing.



amazon.com ebay Aliexpress

Available on Amazon, Ebay and Aliexpress!



WORKPRO®

Hangzhou Great Star Industrial Co., Ltd.
Add: No.35-37 Jiuahuan Road, jianggan District, Hangzhou, China, 310019
Tel: (00)86-571-81601388 Fax: (00)86-571-81601234
E-mail: marketing@greatstartools.com
www.workprotools.com

Great Star Industrial USA, LLC
9836 Northcross Center Court, Suite A Huntersville, NC 28078
Tel: 888-452-1213

201905-A5-06

WORKPRO® is a trademark of Hangzhou Great Star Industrial Co., Ltd.

X-ON Electronics

Largest Supplier of Electrical and Electronic Components

Click to view similar products for [Other Tools](#) category:

Click to view products by [Workpro](#) manufacturer:

Other Similar products are found below :

[CR-0AFL4--332K](#) [568681-1](#) [5800-0090](#) [58061-1](#) [59065-5](#) [59085](#) [00-8273-RDPP](#) [00-8729-WHPP](#) [593033](#) [593072](#) [593564100](#) [593575](#)
[593593](#) [011349-000](#) [CRCW08052740FRT1](#) [LUC-018S070DSP](#) [LUC-024S105DSP](#) [599-2021-3-NME](#) [599-JJ-2021-03](#) [00-5080-YWPP](#) [00-](#)
[9089-RDPP](#) [00-9300-RDPP](#) [CRCW2010331JR02](#) [601-JJ-06](#) [601-SPB](#) [601YSY](#) [602-JJ-03](#) [602SPB](#) [603-JJ-07-FP](#) [603-JJY-04](#) [M15570-25](#)
[CRTN1013](#) [CS16](#) [6-1579014-0](#) [6203](#) [62200-5709](#) [6240-1](#) [M43435 TY 2 SZ 3 FIN B BLK](#) [M43435 TY 5 SZ 3 FIN C NAT](#) [M-5Z](#) [M6816](#)
[M7298](#) [M7456](#) [M7976](#) [660-29ABT1](#) [662508-1](#) [CVHD-950X-93.333](#) [CW104-01X](#) [671-GP-04-KT39-73207](#) [CW307-01A](#)