

TECHNICAL CHARACTERISTICS

SPECIFICATION

- > **Contact Rating:**
 - Switching: 25mA, 24VDC
 - Non-Switching: 100mA, 50VDC
- > **Contact Resistance:**
 - Initial: 50mOHM max.
 - After Life Test: 100mOHM max.
- > **Insulation Resistance:** min. 100MOHM at 500VDC
- > **Dielectric Strength:** 500VAC for 1 minute
- > **Operating Force:** 1000g max.
- > **Mechanical Life:** min. 5000 cycles
- > **Electrical Life:** 2000 cycles / 25mA, 24VDC
- > **Raise Actuator Type**

MATERIAL

- > **Cover:** PBT UL 94V-0, color Red
- > **Base:** PA 66 UL 94V-0, color Black
- > **Actuator:** PA 66 UL 94V-0, color White
- > **Support:** PA 66 UL 94V-0, color Black
- > **Contact:** Gold Plated
- > **Terminal:** Tin Plated

SOLDERING INFORMATION

- > **Terminal in THT version**
- > **Wave soldering 260°C 10sec. max**
- > **Hand soldering with 30W or under at 350°C for 3 sec. max or at 270°C for 5 sec max**
- > **Keep in "off" position during soldering**
- > **Ultrasonic cleaning not re-commended**
- > **Any inflow of Flux into the switch may influence the contact function**

ENVIRONMENTAL

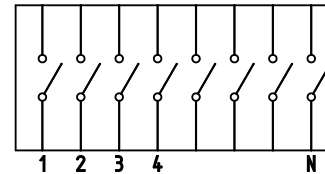
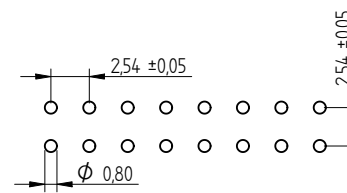
- > **Storage condition: -40°C ~ +85°C**
- > **Operation condition: -40°C ~ +85°C**
- > **Compliance: Lead Free, ROHS, Reach**

PACKAGING INFORMATION

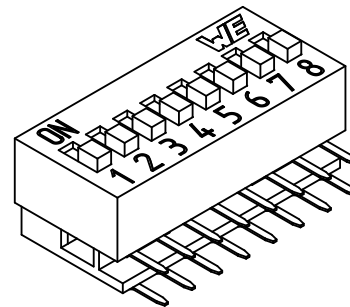
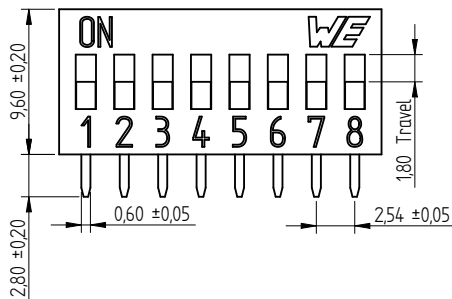
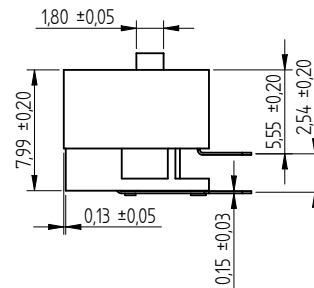
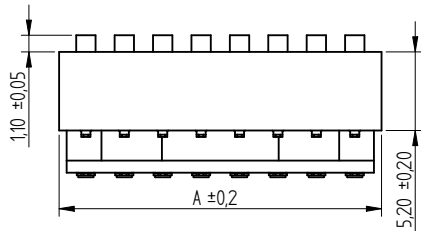
- > **Tube packaging only**
- > **On delivery in "off" position**

DIMENSION

No. Of Pole	2	3	4	5	6	7
Dim. A (mm)	6,08	8,62	11,16	13,70	16,24	18,78
No. Of Pole	8	9	10	12		
Dim. A (mm)	21,32	23,86	26,40	31,48		



Wiring Diagram



	Projection 	GENERAL TOLERANCE		Basic material		
		.x = +/- 0,2 .xx = +/- 0,15				
		Date	Name	DESCRIPTION		
		Drawn	09-02-23	Jelisarow	WE-SWITCH_BOX_Type, right angle, THT version	
		Checked			raise Actuator without top tape sealed	
				Scale	2:1	Position
				Drawing.- No. 4182172709xx		SIZE
						A4
REV	FILE	DATE	BY	EDV NO	4182172709xx.dft	System: Solid Edge V20

X-ON Electronics

Largest Supplier of Electrical and Electronic Components

Click to view similar products for [DIP Switches/SIP Switches](#) category:

Click to view products by [Wurth](#) manufacturer:

Other Similar products are found below :

[78M03S](#) [79B10T](#) [8136-475G4T](#) [G7G-1A2-CB-DC12](#) [H7CZL8AC100240](#) [A7SS-M](#) [A8CA-201](#) [DRR60016](#) [DRS4016](#) [1825008-1](#) [1825444-1](#) [25.350.0653.0](#) [SDA10H1BDA](#) [97R06ST](#) [A2C-2A5](#) [1825444-7](#) [ADE08SA04](#) [ADE12S04](#) [192960010](#) [2-1825058-8](#) [25.330.0653.1](#) [25.352.0353.0](#) [CXDRIVEV2X](#) [IKN0600000](#) [IKN0800000](#) [LA2-002-DC24](#) [DBS1003](#) [438872000](#) [DRD10CRAE04](#) [DSR02T](#) [DSS 208 N](#) [E2FMX2D1M1TGJ03M](#) [NDI10H](#) [219-9MSTP](#) [204-6ES](#) [EPM02FV](#) [701521596](#) [NDS08V](#) [76SB05](#) [79A10](#) [TD06H0SK1](#) [Z7.255.9027.0](#) [1-1825058-3](#) [1825428-4](#) [219-10LPSTF](#) [E3ZG6111D03M](#) [G4D212PUSTV2DC5](#) [195-7MSTN](#) [NDI05H](#) [EPG301BT06](#)