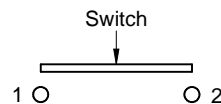
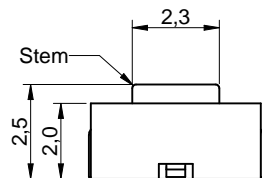
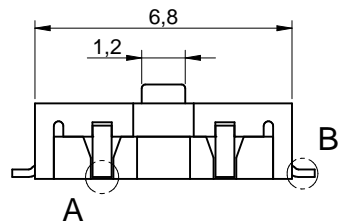
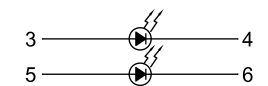
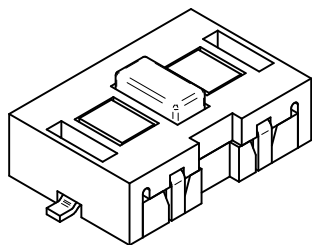
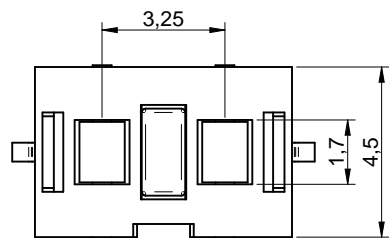


Pattern Dimensions



Circuit Diagram



LED SCHEMATIC

TECHNICAL CHARACTERISTICS

SPECIFICATION

- >Rating: 50mA, 12VDC
- >Contact Resistance: Initial: 100mOHM max. After Life Test: 100mOHM max.
- >Insulation Resistance: min. 100MOHM at 500VDC
- >Dielectric Strength: 250VAC for 1 minute
- >Stroke: 0.25 +0.2/-0.1 mm
- >Bounce: 10ms max.

MATERIAL

- >Cover: LCP UL 94V-0
- >Actuator: LCP UL 94V-0
- >Frame: LCP UL 94V-0, color white
- >Contact: Stainless Steel with Ag
- >Terminal: Brass with Ag
- >Tape: Polyimide

SOLDERING INFORMATION

- >Terminal in SMD version
- >According to JEDEC J-STD 020 Hot Air, 2 times max.
- >Hand soldering under 350°C for 3 sec. max

ENVIRONMENTAL

- >Storage condition: -40°C ~ +85°C, 60% RH max.
- >Operation condition: -40°C ~ +85°C
- >MLS Level: 3
- >Compliance: ROHS, Reach

HANDLING ADVISE

- >ESD prevention methods need to be applied for manual handling and processing by machinery
- >Resistors for protection are obligator

PACKAGING INFORMATION

- >Reel in ESD bag

Scale - 5:1

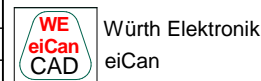
PN	Force	Color of LED	Life cycle
44 4RD2 1025 816	160g +75/-30gf	Red / Red	50.000
44 4VD2 1025 816	160g +75/-30gf	Bright green / Bright green	50.000
44 4BD2 1025 816	160g +75/-30gf	Blue / Blue	50.000
44 4YD2 1025 816	160g +75/-30gf	Yellow / Yellow	50.000

This electronic component is designed and developed with the intention for use in general electronics equipments.

Before incorporating the components into any equipments in the field such as aerospace, aviation, nuclear control, submarine, transportation, (automotive control, train control, ship control), transportation signal, disaster prevention, medical, public information network etc. where higher safety and reliability are especially required or if there is possibility of direct damage or injury to human body, Würth Elektronik must be asked for a written approval.

In addition, even electronic component in general electronic equipments, when used in electrical circuits that require high safety, reliability functions or performance, the sufficient reliability evaluation-check for the safety must be performed before by the user before usage.

		GENERAL TOLERANCE		Basic material	
		.x = +/- 0,2 .xx = +/- 0,15			
		Date	Name	DESCRIPTION	
		Drawn 12-10-09	Jelisarow	SwTASL	
		Checked 12-10-09	Hsu	WS-TASL 6,8*4,5mm Tact Switch with integrated LED, SMD version	
b	revised MatchCode	14-09-26	DaF	Scale	5:1
a	Bounce 10ms max.	14-04-14	DaF	Position	
REV	FILE	DATE	BY	SIZE	
				Drawing.- No. 444xx21025816	
					A4
				System :Solid Edge ST4	



item	Emitting color		Yellow	Red	bright green	green	Blue
	Order code	unit	YS	RS	VS	GS	BS
1	Peak wavelength typ.	nm	590	650	574	520	468
2	Dominant Wave length	typ.nm	590	630	567	525	470
	@IF=20mA						
3	spectral Line Half-width	typ.nm	20	28	20	35	21
	@IF=20mA						
4	Capacitance	typ.pF	20	35	15	100	100
	VF=0V;f=1MHZ						
5	Forward voltage	typ. V	2	1,95	2,1	3,2	3,2
	@IF=20mA						
6	Reverse current	uA	10	10	10	10	10
	@VR=5V						
7	ESD	V	2000	2000	2000	1000	1000
8	Viewing Angle	°	145	145	145	145	145
	@20mA 2θ 50% typ						
9	Luminous intensity	min. mcd	80	120	20	80	20
	@IF=20mA	typ. mcd	180	220	50	150	50
10	Material		AlGaInP	AlGaInP	AlGaInP	InGaN	InGaN
11	lens type		water clear	water clear	water clear	water clear	water clear

Absolute Maximun Ratings (Ambient Temperature 25C)

Properties	Blue & green	Red	yellow	bright green	Unit
Power Dissipation	120	75	75	75	mW
Peak Forward current	100	185	175	150	mA
continuous Forward current	30	30	30	30	mA
Reverse voltage	5	5	5	5	V
ESD Threshold / HBM	1000	2000	2000	2000	V


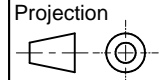

HANDLING ADVISE

- 1) The solder profile has to be complied with according to the technical reflow /or wave soldering specification, otherwise no warranty will be sustained
- 2) All products are supposed to be used before the end of the period of 12 months based on the product date-code, if not 100% solderability can't be warranted
- 3) Violation of the technical product specifications such as exceeding the absolute maximum ratings will be result in the loss of warranty
- 4) It's also recommended to return the products into the original packaging
- 5) ESD prevention methods need to be applicated for manual handling and processing by machinery
- 6) Resistors for protection are obligatory
- 7) The standard deliveries include values in the range and limitation as defined in the Electrical & Optical Properties specified in the datasheet. On each reel, only one bin is sorted and taped. The bin is defined on intensity, chromaticity coordinate or wavelength and forward voltage. In order to ensure highest availability, the reel binning of standard deliveries can vary. A single bin cannot be ordered. Please contact us in advance, if you need a particular bin sorting before placing your order to clarify the lead time, MOQ and pricing.

This electronic component is designed and developed with the intention for use in general electronics equipments.

Before incorporating the components into any equipments in the field such as aerospace, aviation, nuclear control, submarine, transportation, (automotive control, train control, ship control), transportation signal, disaster prevention, medical, public information network etc. where higher safety and reliability are especially required or if there is possibility of direct damage or injury to human body, Würth Elektronik must be asked for a written approval.

In addition, even electronic component in general electronic equipments, when used in electrical circuits that require high safety, reliability functions or performance, the sufficient reliability evaluation-check for the safety must be performed before by the user before usage.

				GENERAL TOLERANCE .x = +/- 0,2 .xx = +/- 0,15		Basic material	
				Date	Name	DESCRIPTION	
				Drawn	12-10-09	Jelisarow	
				Checked	12-10-09	Hsu	
						WS-TASL 6,8*4,5mm Tact Switch with integrated LED, SMD version	
b	revised MatchCode	14-09-26	DaF	 Würth Elektronik eiCan		Scale	5:1
a	Bounce 10ms max.	14-04-14	DaF			Position	
REV		FILE	DATE	BY	EDV NO 444x21025816.dft	SIZE	
						Drawing.- No. 444x21025816	
						A4	
						System :Solid Edge ST4	

X-ON Electronics

Largest Supplier of Electrical and Electronic Components

Click to view similar products for [Wurth manufacturer](#):

Other Similar products are found below :

[742700](#) [74270062](#) [7446222002](#) [750314624](#) [750341638](#) [30405S](#) [31402](#) [7446321027](#) [744732100](#) [744741471](#) [744772681](#) [744777](#)
[890334025009](#) [178050601](#) [61308021121](#) [615008138221](#) [744999](#) [7446823003](#) [744028](#) [66201621822](#) [691301710003](#) [7446221012](#) [744720](#)
[760390015](#) [760895431](#) [662006236022](#) [64900621822](#) [74436410330](#) [78438357100](#) [890334026014](#) [744839208072](#) [744762A/RFI](#) [7449984](#)
[750310346](#) [861011384014](#) [750817018](#) [7449982](#) [3021717](#) [3020903](#) [885342](#) [2603019321001](#) [2603019021001](#) [2606039021001](#)
[2608019324001](#) [2607019213001](#) [2605039241001](#) [2605049281001](#) [2607029291011](#) [709620200](#) [709951000](#)