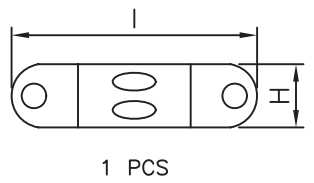
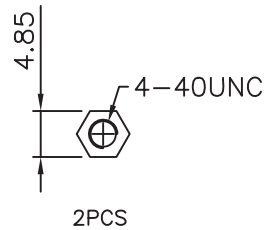
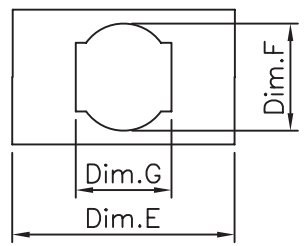
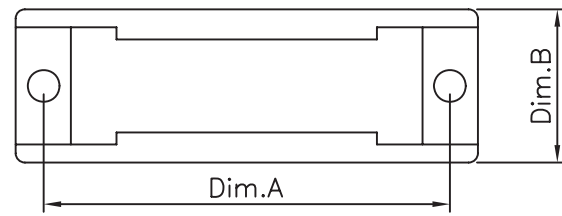
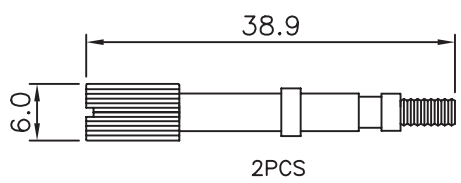
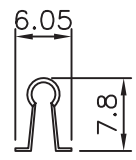
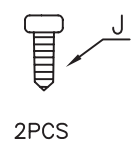
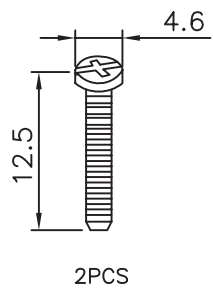
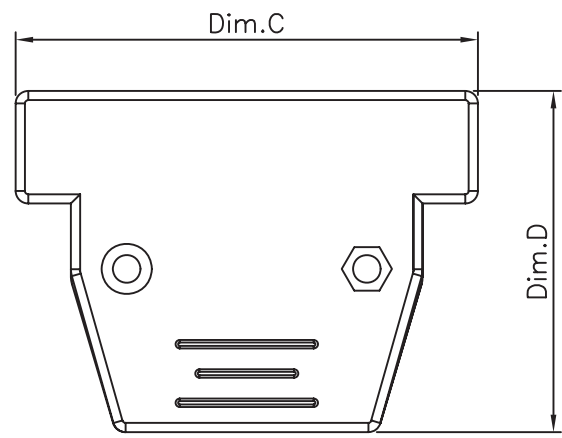


1 2 3 4 5

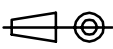


TECHNICAL CHARACTERISTICS  
 MATERIAL  
 INSULATOR: ABS RESIN METALIZED  
 COLOR: CHROMATE CLAIR  
 ENVIRONMENTAL  
 FLAMMABILITY RATING: UL94-HB  
 COMPLIANCE: LEAD FREE AND ROHS  
 PACKAGING: BAG



Circuits	Dim.A	Dim.B	Dim.C	Dim.D	Dim.E	Dim.F	Dim.G	Dim.H	Dim.I	Dim.J
09	25.0	18.0	31.3	29.8	14.3	9.2	11.9	5.7	16.5	STG-2.6*6
15	33.5	18.0	43.2	37.1	18.0	10.4	12.8	5.8	19.3	STG-2.6*6
25	47.0	18.2	55.3	41.0	25.0	11.2	14.0	6.5	26.5	STG-2.3*6

RoHS Compliant			
G			
F			
E	10-NOV-14	VIEWS+PACKG.	AS
D	20-MAR-13	FLAMABILITY	AR
C	23-OCT-12	COMPATIBILITY	GG
B	26-NOV-08	COMPATIBILITY	JP
A	29-DEC-06	PDF	JP
REV	DATE	FILE	BY

PROJECTION:  
  
 APPROVAL: NPr

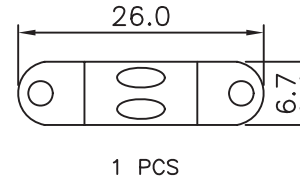
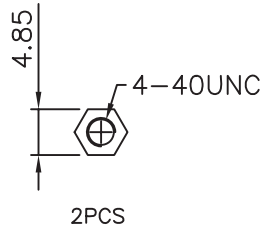
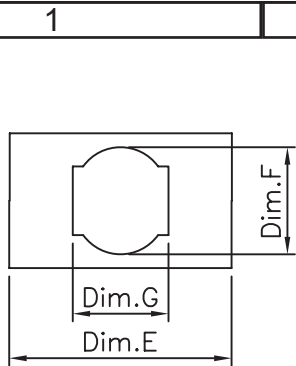
GENERAL TOLERANCE  
 .X = +/- 0.2  
 .XX = +/- 0.15  
 UNIT: MM  
 SCALE:  
 SHEET: 1/4  
 DRAW: AS



DESCRIPTION: WR-DSUB METALIZED PLASTIC HOOD TOP ENTRY  
 4-40 SCREW  
 WERI PART NO: 6180 xx 253 11

SIZE  
**A4**

A  
 B  
 C  
 D



TECHNICAL CHARACTERISTICS

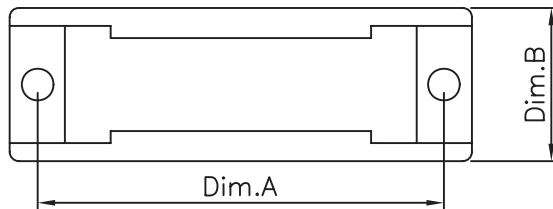
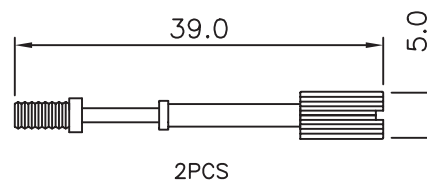
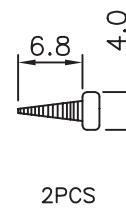
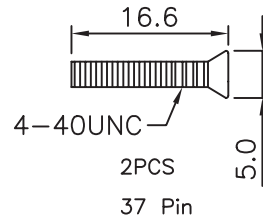
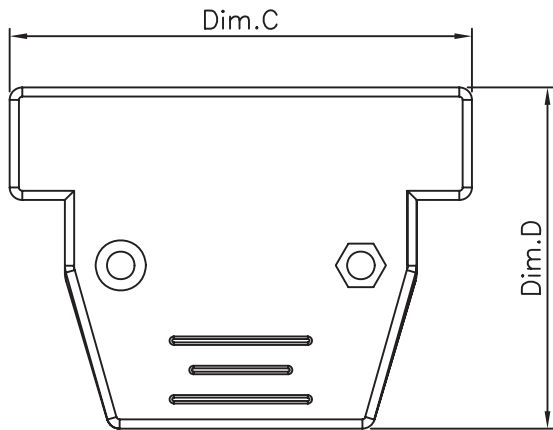
MATERIAL  
INSULATOR: ABS RESIN METALIZED  
COLOR: CHROMATE CLAIR

ENVIRONMENTAL  
FLAMMABILITY RATING: UL94-HB  
COMPLIANCE: LEAD FREE AND ROHS

PACKAGING: BAG

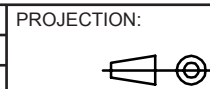


NOT COMPATIBLE WITH THE CRIMPING HOUSING:  
618 0xx 217 122 & 618 0xx 217 222



Circuits	Dim.A	Dim.B	Dim.C	Dim.D	Dim.E	Dim.F	Dim.G
37	63.5	18.2	70.5	48.0	33.0	14.0	15.8

RoHS Compliant			
G			
F			
E			
D	10-NOV-14	VIEWS+PACKG.	AS
C	20-MAR-13	FLAMABILITY	AR
B	26-NOV-08	COMPATIBILITY	JP
A	29-DEC-06	PDF	JP
REV	DATE	FILE	BY



PROJECTION:

APPROVAL: NPr

GENERAL TOLERANCE

.X = +/- 0.2

.XX = +/- 0.15



UNIT: MM

SCALE:

SHEET: 2/4

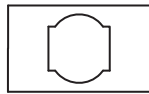
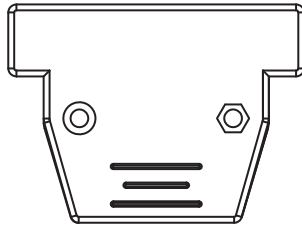
DRAW: AS

DESCRIPTION: WR-DSUB METALIZED PLASTIC HOOD TOP ENTRY  
4-40 SCREW

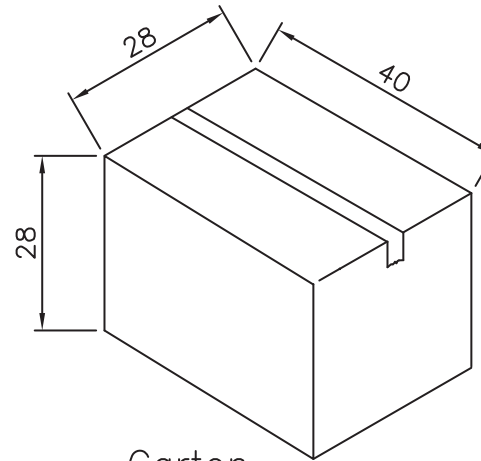
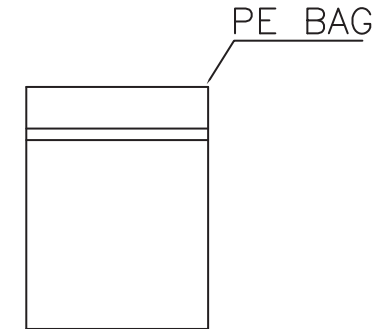
WERI PART NO: 6180 xx 253 11

SIZE

**A4**



Note:  
1.Dimension:  
Carton Size:40\*28\*28(cm)

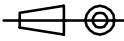


Carton

Pin.	Pcs/Bag	Pcs/Carton
9	100	600
15	100	400
25	50	300
37	50	300

RoHS Compliant

G			
F			
E			
D			
C			
B			
A	10-NOV-14	PDF	AS
REV	DATE	FILE	BY

PROJECTION:  


GENERAL TOLERANCE  
.X = +/- 0.2  
.XX = +/- 0.15



APPROVAL: NPr

UNIT: MM  
SCALE:  
SHEET: 3/4  
DRAW: AS

DESCRIPTION: WR-DSUB METALIZED PLASTIC HOOD TOP ENTRY  
4-40 SCREW  
WERI PART NO: 618 0xx 253 11

SIZE  
**A4**

1

2

3

4

5

## Cautions and Warnings:

This electronic component is designed and developed with the intention for use in general electronics equipments.

Before incorporating the components into any equipments in the field such as aerospace, aviation, nuclear control, submarine, transportation, (automotive control, train control, ship control), transportation signal, disaster prevention, medical, public information network etc. where higher safety and reliability are especially required or if there is possibility of direct damage or injury to human body, Würth Elektronik must be asked for a written approval.

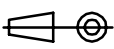

In addition, even electronic component in general electronic equipments, when used in electrical circuits that require high safety, reliability functions or performance, the sufficient reliability evaluation-check for the safety must be performed before by the user before usage.

A

B

C

RoHS Compliant

G				PROJECTION: 	GENERAL TOLERANCE .X = +/- 0.2 .XX = +/- 0.15		
F							
E							
D							
C				APPROVAL: JC	UNIT: MM	DESCRIPTION: DISCLAIMER	SIZE <b>A4</b>
B					SCALE:		
A	10-SEP-14	PDF	QL		SHEET: 4/4	WERI PART NO: DISCLAIMER	
REV	DATE	FILE	BY		DRAW: QL		

D

## X-ON Electronics

Largest Supplier of Electrical and Electronic Components

*Click to view similar products for [D-Sub Backshells](#) category:*

*Click to view products by [Wurth](#) manufacturer:*

Other Similar products are found below :

[M85049/6-38N](#) [M85049/86-12N03](#) [M85049/90-13P03](#) [70.350.0636.4](#) [70.350.2435.1](#) [72.350.1035.2](#) [72.352.2435.1](#) [73.359.4035.3](#) [829472-1](#)  
[PCS-E20W](#) [970-015-040R011](#) [970-025-040R011](#) [971-009-030R121](#) [971-009-040R011](#) [971-015-040R011](#) [1437013-9](#) [1484402-8](#) [156-3025-](#)  
[EX](#) [16-500800](#) [165X02659X](#) [165X03329A](#) [165X03399A](#) [165X10259X](#) [165X11759X](#) [165X11889X](#) [165X13019X](#) [165X13029X](#)  
[165X13169X](#) [165X13199X](#) [165X13239X](#) [165X13389X](#) [165X13489X](#) [165X14219X](#) [165X14429X](#) [165X14449X](#) [165X17409X](#)  
[165X17439X](#) [165X17569X](#) [165X17599X](#) [165X17609X](#) [165X17889X](#) [165X17979X](#) [L171373](#) [971-025-030R121](#) [300X10989X](#)  
[165X02609X](#) [165X02639X](#) [165X02689X](#) [165X04219A](#) [165X10469X](#)