

Product/Process Change Notice (PCN)



- Major change
 Minor change

PCN #: WE_RJ45LAN_20150508

Product Affected: WE-RJ45LAN (please refer to table in detail of change stating which part numbers are affected)

- Product Mark
 Date Code
 Packaging
 Others

PCN Date: 08.05.2015

Effective Date: 06.08.2015

Contact: Product Management

Phone: +49 (0) 7942 - 945 5001

Fax: +49 (0) 7942 - 945 5179

E-mail: pcn.eisos@we-online.de

Attachment: Yes No

Samples: on request, Lead time 6-8 weeks

DESCRIPTION AND PURPOSE OF CHANGE:

- 1) In order to increase the production capability Würth Elektronik will implement a transfer of the production.
- 2) To improve the processability, the marking will be changed from ink marking to LASER marking. Therefore the WE logo will be changed to letters WE.
- 3) For internal standardisation Würth Elektronik will mark the part with the global part number (749xxx) instead of the old Midcom part number (MICxxx).
- 4) In order to enhance the product reliability, Würth Elektronik will change the LEDs used on the parts.

To guarantee a smooth ramp up of the new production line there will be a transition phase of 6 months after effective date 06.08.15 (until 06.02.16) where we send parts from both locations you can identify the parts according to their lot numbers (see below).

DETAIL OF CHANGE:

Following part numbers are affected:

Midcom part number	Global part number
7498010210	7498010210
MIC24120-5101W-LF3	7498011002
MIC24120-5101R-LF3	7498011002R
MIC24121-5308W-LF3	7498011122
7498011122R	7498011122R
MIC24121-5408W-LF3	7498011125
MIC26023-5134W-LF3	7498011211
7498111001	7498111001
MIC38121-5356W-LF3	7498111120
MIC38121-5356R-LF3	7498111120R
7498210220	7498210220
MIC26010-5101T-LF3	7499010005
MIC24311-0101T-LF3	7499010121
MIC24611-5104T-LF3	7499010122
MIC24611-0101T-LF3	7499010124
MIC24611-5117T-LF3	7499010126
MIC25213-5210T-LF3	7499010213
74990110013	74990110013
MIC24010-5101T-LF3	7499011002
MIC24011-0101T-LF3	7499011121
74990111215	74990111215
MIC24011-5108T-LF3	7499011125
MIC25113-0141T-LF3	7499011211
74990112120	74990112120
MIC24013-0102T-LF3	7499011215

MIC24112-0101T-LF3	7499011225
MIC2411C-6131T-LF3	7499011610
7499012000	7499012000
MIC24F11-0101T-LF3	7499012121
MIC24811-0104W-LF3	7499021121
7499021210	7499021210
MIC24712-0108W-LF3	7499031221
7499071001	7499071001
MIC38611-5166T-LF3	7499110120
7499111005	7499111005
7499111213	7499111213
MIC3811A-0255T-LF3	7499111241
MIC3811B-0158W-LF3	7499111422
7499111443	7499111443
7499111613	7499111613
MIC3801J-5169T-LF3	7499111990
MIC66211-5171T-LF3	7499210121
MIC66210-5171T-LF3	7499210122
MIC66611-5171T-LF3	7499210123
MIC66311-0171T-LF3	7499210124
7499210210	7499210210
MIC64013-5180T-LF3	7499210211
MIC66011-5171T-LF3	7499211121
7499211123	7499211123
7499311610	7499311610
7499311611	7499311611
7499411122	7499411122
7499511610	7499511610

1) Production site is marked in the Lotnumber which will change from 223 xx xxx xxxx xxx to 260 xx xxx xxxx xxx.

2) Old marking:

New marking:



3)

Old part number marking	New (global) part number marking
MIC24120-5101-LF3	7498011002
MIC24121-5308-LF3	7498011122
MIC24121-5408-LF3	7498011125
MIC26023-5134-LF3	7498011211
MIC38121-5356-LF3	7498111120
MIC26010-5101-LF3	7499010005
MIC24311-0101-LF3	7499010121
MIC24611-5104-LF3	7499010122
MIC24611-0101-LF3	7499010124
MIC24611-5117-LF3	7499010126
MIC25213-5210-LF3	7499010213
MIC24010-5101-LF3	7499011002
MIC24011-0101-LF3	7499011121

MIC24011-5108-LF3	7499011125
MIC25113-0141-LF3	7499011211
MIC24013-0102-LF3	7499011215
MIC24112-0101-LF3	7499011225
MIC2411C-6131-LF3	7499011610
MIC24F11-0101-LF3	7499012121
MIC24811-0104-LF3	7499021121
MIC24712-0108-LF3	7499031221
MIC38611-5166-LF3	7499110120
MIC3811A-0255-LF3	7499111241
MIC3811B-0158-LF3	7499111422
MIC3801J-5169-LF3	7499111990
MIC66211-5171-LF3	7499210121
MIC66210-5171-LF3	7499210122
MIC66611-5171-LF3	7499210123
MIC66311-0171-LF3	7499210124
MIC64013-5180-LF3	7499210211
MIC66011-5171-LF3	7499211121

- 4) The new LEDs will have a round form at the LED head, while the head of the old LEDs is flattened. Optical differences for switched on LEDs are small (see wavelengths at pictures below) and have no impact on the general function of the RJ45 connector.

OLD:



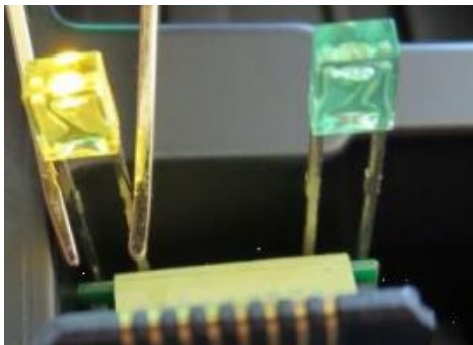
Wavelength typ. **568 nm**

NEW:



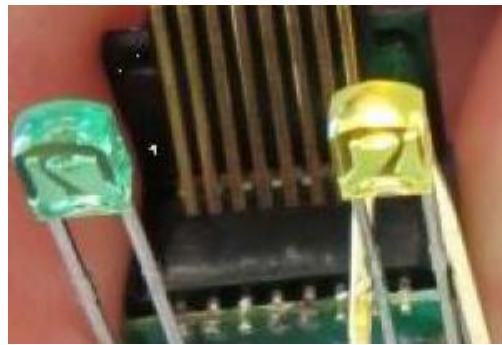
Wavelength typ. **570 nm**

OLD:



Wavelength typ. **588 nm**

NEW:



Wavelength typ. **589 nm**

RELIABILITY / QUALIFICATION SUMMARY:

Product approval is according to reliability requirements and is internally released by Quality and Product Management Departments.

DATA SHEET CHANGE:

Yes

No

Würth Elektronik eiSos GmbH & Co. KG

D-74638 Waldenburg · Max-Eyth-Strasse 1 Germany · Telefon (+49) (0) 7942 - 945 - 0 Telefax (+49) (0) 7942 - 945 - 5000

X-ON Electronics

Largest Supplier of Electrical and Electronic Components

Click to view similar products for [Modular Connectors](#) / [Ethernet Connectors](#) category:

Click to view products by [Wurth](#) manufacturer:

Other Similar products are found below :

[RJE231881317T](#) [MP1010RX-1000](#) [MP44RX-1000](#) [GAX-3-66](#) [GAX-8-62](#) [93606-0253](#) [GD-A-44](#) [GDCX-PA-66-50](#) [GDCX-PN-64](#) [GDCX-PN-66](#) [GDCX-PN-66-50](#) [GDLX-A-66](#) [GDLX-A-88](#) [GDLX-N-66](#) [GDLX-S-88K](#) [GDTX-S-88-50](#) [GDX-PA-1010](#) [GLX-N-1010M-BLK](#) [GLX-N-44M](#) [GLX-S-88M-BLK](#) [GMX-N-1010](#) [GMX-S-1010](#) [GMX-S-66](#) [GMX-SMT2-N-1010](#) [GMX-SMT2-N-64-50](#) [GMX-SMT2-S6-88](#) [GMX-SMT4-N-88](#) [GPX-2-64](#) [GRT1-BT1-5](#) [GSGX-N-2-88](#) [GSX-NS2-88-3.05](#) [GSX-NS2-88-3.05-50](#) [GSX-NS-88-3.05-30](#) [GSX-NS-88-3.05-50](#) [GSX-NS-88-3.68](#) [1-1775629-2](#) [GWLX-S-88-GR](#) [GWLX-S9-88-YG](#) [1300500326](#) [1300500227](#) [1300530003](#) [1300570002](#) [1324640-4](#) [RJ11FTVC2G](#) [RJ11FTVC2N](#) [RJFTVX2SA1G](#) [132764-001](#) [1400000](#) [1413176](#) [1413235](#)