

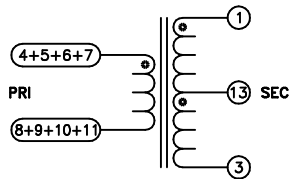
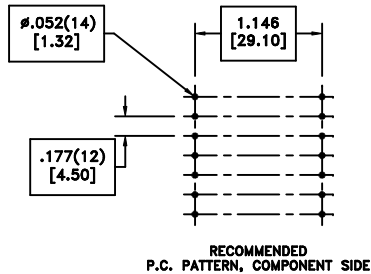
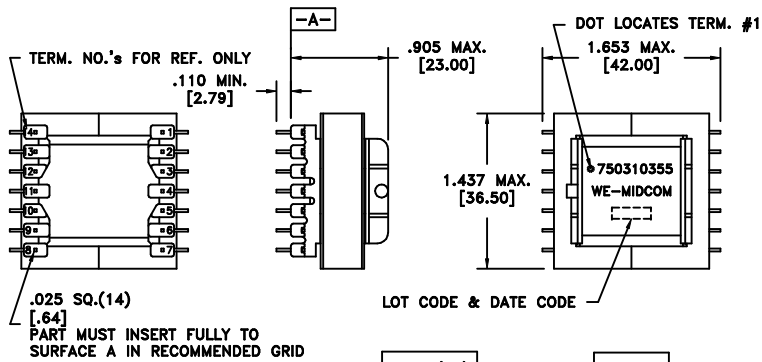
| | | |
|-------------------|------|---------------|
| CUSTOMER TERMINAL | RoHS | LEAD(Pb)-FREE |
| Sn100% | Yes | Yes |

more than you expect



ELECTRICAL SPECIFICATIONS @ 25°C unless otherwise noted:

| PARAMETER | TEST CONDITIONS | VALUE |
|--------------------------|--|-----------------------------|
| D.C. RESISTANCE | 7-8 tie(4+5+6+7, 8+9+10+11), @20°C | 0.005 ohms max. |
| D.C. RESISTANCE | 1-3 @20°C | 0.250 ohms max., 0.120 typ. |
| INDUCTANCE | 7-8 tie(4+5+6+7, 8+9+10+11), 50kHz, 10mVAC, Ls | 2.5uH ±10% |
| SATURATION CURRENT @85°C | 20% rolloff from initial | >50ADC |
| CONTINUOUS CURRENT | 40°C temp rise from ambient | 24A |
| LEAKAGE INDUCTANCE | 7-8 tie(1+3, 4+5+6+7, 8+9+10+11), 100kHz, 1.0VAC, Ls | 100nH max. |
| DIELECTRIC | PRI-SEC 1250VAC, 1 second | 1000VAC, 1 minute |
| URNS RATIO | (13-3):(1-13) | 1:1, ±1% |
| URNS RATIO | (1-3):(4-11) | 10:1, ±1% |
| URNS RATIO | (1-3):(5-10) | 10:1, ±1% |
| URNS RATIO | (1-3):(6-9) | 10:1, ±1% |
| URNS RATIO | (1-3):(7-8) | 10:1, ±1% |



| | | | |
|------|------|--|----------------------|
| REV. | DATE | Packaging Specifications Method: Tray PKG-0838 www.we-online.com/midcom | |
| 6B | 8/11 | | CONVENTION PLACEMENT |
| 6A | 2/09 | SEE REVISION SHEET FOR REVISION LEVEL | REVISION LEVEL |

Tolerances unless otherwise specified:
Angles: ±1°
Decimals: ±.005 [.13]
Fractions: ±1/64 Footprint: ±.001 [.03]

This drawing is dual dimensioned. Dimensions in brackets are in millimeters.

DRAWING TITLE
TRANSFORMER

eiSos p/n: 750310355

PART NO.
750310355

compliant RoHS

SPECIFICATION SHEET 1 OF 1

X-ON Electronics

Largest Supplier of Electrical and Electronic Components

Click to view similar products for [Power Transformers](#) category:

Click to view products by [Würth](#) manufacturer:

Other Similar products are found below :

[ET-030A](#) [F-102X](#) [F-120X](#) [F-14X-1](#) [F-181U](#) [F-18A](#) [F-199U](#) [F-19X](#) [F-202U](#) [F-204U](#) [F-206U](#) [F-227X](#) [F-238U](#) [F-239U-1](#) [F-23U](#) [F24-250-B](#)
[F-242U](#) [F-245U](#) [F-264U](#) [F-265U](#) [F-267U](#) [F-281U](#) [F-283U](#) [F-290X](#) [F-295Z](#) [F-296Z](#) [F-298Z](#) [F-3143P](#) [F-3298Z](#) [F-33U](#) [F-346X](#) [F-35U](#) [F-](#)
[364U](#) [F-392A](#) [F-395X](#) [F-397U](#) [F-412X](#) [F-47U](#) [F-55X-1](#) [F-60U](#) [F-68U](#) [F-71U](#) [F-72Z](#) [F-74U](#) [F-83A](#) [F-84AC](#) [F-85U](#) [F-86U](#) [F-9U](#) [PCT-02](#)