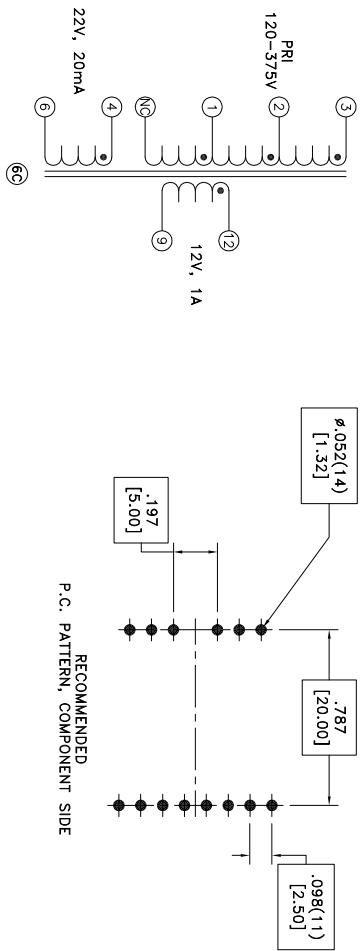
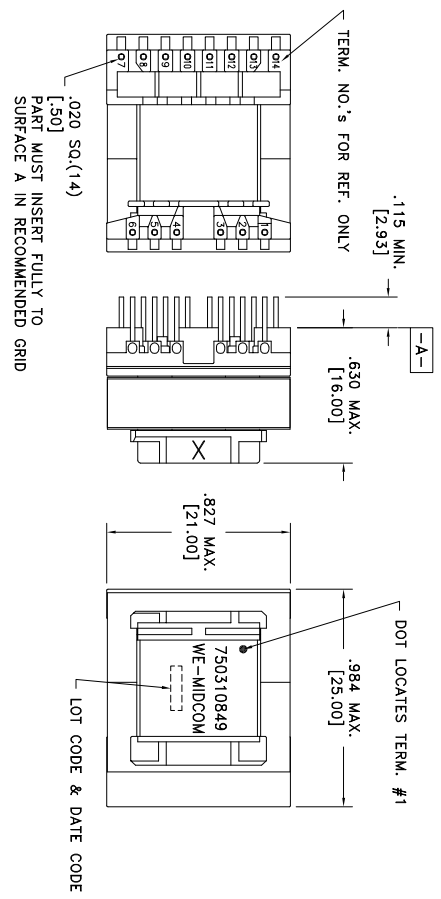


CUSTOMER TERMINAL	ROHS	LEAD(Pb)-FREE
Sn96%, Ag4%	Yes	Yes



more than you expect



**ELECTRICAL SPECIFICATIONS @ 25°C unless otherwise noted:**

PARAMETER	TEST CONDITIONS	VALUE
D.C. RESISTANCE	1-3 @20°C	0.62 ohms ±10%
D.C. RESISTANCE	4-6 @20°C	0.37 ohms ±10%
D.C. RESISTANCE	9-12 @20°C	0.021 ohms ±10%
INDUCTANCE	1-3 10kHz, 100mVAC, Is	900uH ±10%
SATURATION CURRENT	20% rolloff from initial	900mA
LEAKAGE INDUCTANCE	tie(4+6, 9+12), 100kHz, 100mVAC, Is	12 0uH max.
DIELECTRIC RATING	tie(1+4), 5000VAC, 1 second	4000VAC, 1 minute
TURNS RATIO	(2-1):(3-2)	1:1, ±1%
TURNS RATIO	(3-1):(4-6)	4:1, ±1%
TURNS RATIO	(3-1):(12-9)	8:1, ±1%

**GENERAL SPECIFICATIONS:**

⑥ Designed to comply with the following requirements as defined by IEC61558-2-17 and IEC60950-1:  
 - Reinforced insulation for a primary circuit at a working voltage of 400V.

REV.	DATE	Packaging Specifications	Tolerances unless otherwise specified:	DRAWING TITLE	PART NO.
6E	6/14	Method: Tray	Angles: ±1°	<b>TRANSFORMER</b>	<b>750310849</b>
6D	3/12	PKG-0736	Fractions: ±1/64		
6C	5/11	www.we-online.com/midcom	Decimals: ±.003 Footprint: ±.001		
6B	11/10	SEE REVISION SHEET FOR REVISION LEVEL	This drawing is dual dimensioned. Dimensions in brackets are in millimeters.		



## **X-ON Electronics**

Largest Supplier of Electrical and Electronic Components

*Click to view similar products for [Power Transformers](#) category:*

*Click to view products by [Würth](#) manufacturer:*

Other Similar products are found below :

[ET-030A](#) [F-102X](#) [F-120X](#) [F-14X-1](#) [F-181U](#) [F-18A](#) [F-199U](#) [F-19X](#) [F-202U](#) [F-204U](#) [F-206U](#) [F-227X](#) [F-238U](#) [F-239U-1](#) [F-23U](#) [F24-250-B](#)  
[F-242U](#) [F-245U](#) [F-264U](#) [F-265U](#) [F-267U](#) [F-281U](#) [F-283U](#) [F-290X](#) [F-295Z](#) [F-296Z](#) [F-298Z](#) [F-3143P](#) [F-3298Z](#) [F-33U](#) [F-346X](#) [F-35U](#) [F-](#)  
[364U](#) [F-392A](#) [F-395X](#) [F-397U](#) [F-412X](#) [F-47U](#) [F-55X-1](#) [F-60U](#) [F-68U](#) [F-71U](#) [F-72Z](#) [F-74U](#) [F-83A](#) [F-84AC](#) [F-85U](#) [F-86U](#) [F-9U](#) [PCT-02](#)