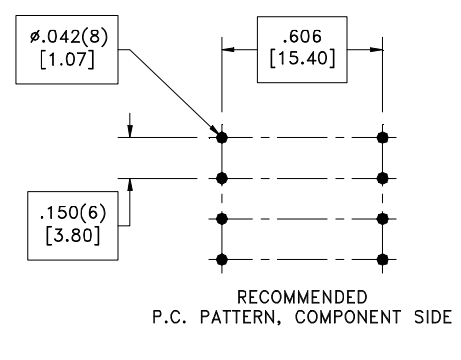
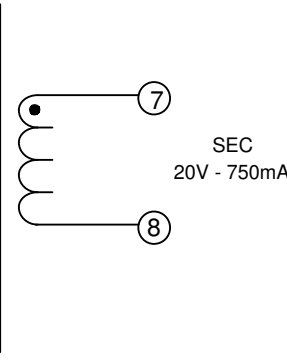
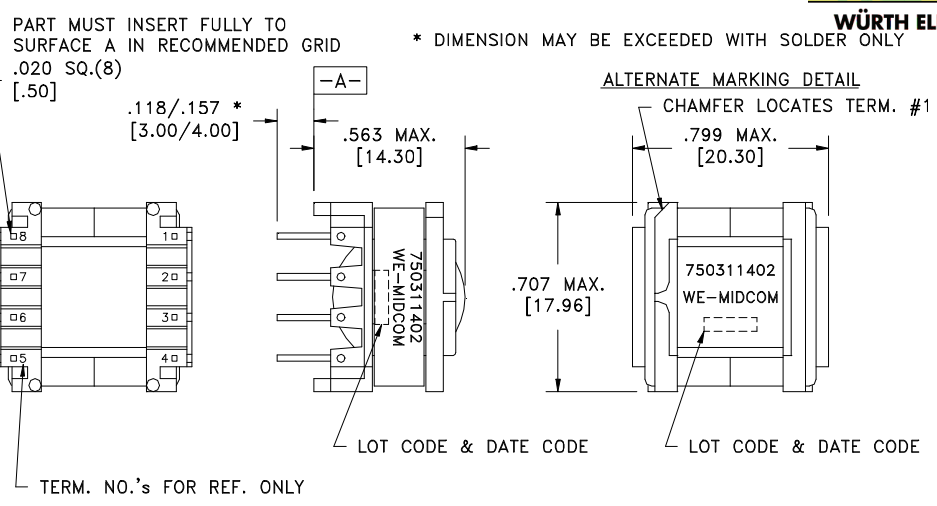


CUSTOMER TERMINAL	RoHS	LEAD(Pb)-FREE
Sn96%, Ag4%	Yes	Yes



**ELECTRICAL SPECIFICATIONS @ 25°C unless otherwise noted:**

- D.C. RESISTANCE (@20°C):  
1-2 , 2.85 Ohms ±10%.  
3-4 , 1.37 Ohms ±10%.  
7-8 , 0.12 Ohms ±20%.
- DIELECTRIC RATING:  
4000VAC, 1 minute tested by applying 4000VAC for 1 second between pins 1-8(tie 2+3).  
500VAC, 1 minute tested by applying 625VAC for 1 second between pins 1-4.
- INDUCTANCE:  
1.48 mH ±10%, 10kHz, 100mVAC, 0mADC, 1-2, Ls.
- SATURATION CURRENT:  
800mA saturating current that causes 20% rolloff from initial inductance.
- LEAKAGE INDUCTANCE:  
21µH typ., 35µH max., 100kHz, 100mVAC, 1-2(tie 3+4, 7+8), Ls.
- TURNS RATIO:  
( 2-1 ):( 4-3 ), ( 3.846 ):( 1 ), ±1%.  
( 2-1 ):( 7-8 ), ( 5.769 ):( 1 ), ±1%.

Functional insulation for a primary circuit at a working voltage of 400VDC.  
OPERATING TEMPERATURE RANGE: -40°C to 125°C including temp. rise.

T\_0\_5420

WE-Midcom, Inc. Watertown, SD USA Toll Free: 800-643-2661 Fax: 605-886-4486	Unless otherwise specified, tolerances are as follows: Angles: ±1°      Fractions: ±1/64 Decimals: ±.005(.127mm)		WE-Midcom, Inc.	
	Drawing Title <b>Transformer</b>		Drawing Number <b>750311402</b>	Rev. <b>01</b>
This drawing is dual dimensioned. Dimensions in brackets are in millimeters		Revisions: See Sheet 1		Scale ----
Engineer:APS			Sheet 2 of 5	
			11/25/2009	

## **X-ON Electronics**

Largest Supplier of Electrical and Electronic Components

*Click to view similar products for [wurth manufacturer](#):*

Other Similar products are found below :

[687001](#) [744741101](#) [750341638](#) [31402](#) [61801525023](#) [686626050001](#) [744741471](#) [744772681](#) [744777](#) [749119950](#) [750312504](#) [890334025009](#)  
[IC-744885](#) [875115350002](#) [600690282801](#) [178050601](#) [615008138221](#) [744999](#) [7446823003](#) [7446323004](#) [744028](#) [66201621822](#) [7446221012](#)  
[744720](#) [760895431](#) [760895651](#) [662006236022](#) [64900621822](#) [418117270910](#) [890334026014](#) [744839208072](#) [744762A/RFI](#) [74651174R](#)  
[744838180160](#) [885300](#) [750310346](#) [861011384014](#) [750817018](#) [33008](#) [3020903](#) [885342](#) [2603019321001](#) [2603019021001](#) [2606039021001](#)  
[2608019324001](#) [2607019213001](#) [2605039241001](#) [2605049281001](#) [2607029291011](#) [687732200002](#)