

|                   |      |               |
|-------------------|------|---------------|
| CUSTOMER TERMINAL | RoHS | LEAD(Pb)-FREE |
| Sn96%, Ag4%       | Yes  | Yes           |



ELECTRICAL SPECIFICATIONS @ 25°C unless otherwise noted:

| PARAMETER          | TEST CONDITIONS                        | VALUE             |
|--------------------|--|-------------------|
| D.C. RESISTANCE    | 1-2 @20°C                              | 0.449 ohms ±10%   |
| D.C. RESISTANCE    | 3-4 @20°C                              | 0.449 ohms ±10%   |
| INDUCTANCE         | 1-2 10kHz, 50mVAC, Ls                  | 10.0mH -30%/+50%  |
| INDUCTANCE         | 3-4 10kHz, 50mVAC, Ls                  | 10.0mH -30%/+50%  |
| SATURATION CURRENT | 1-4 tie(2+3), 20% rolloff from initial | 3.0A              |
| LEAKAGE INDUCTANCE | 1-4 tie(2+3), 10kHz, 50mVAC, Ls        | 300uH min.        |
| ⑥C⑥B DIELECTRIC    | 1-Core tie(1+4), 1875VAC, 1 second     | 1500VAC, 1 minute |
| ⑥C DIELECTRIC      | 1-4 2514VAC, 1 second                  | 2011VAC, 1 minute |
| TURNS RATIO        | (1-2):(4-3)                            | 1:1, ±2%          |

GENERAL SPECIFICATIONS:

OPERATING TEMPERATURE RANGE: -40°C to +125°C including temp rise.

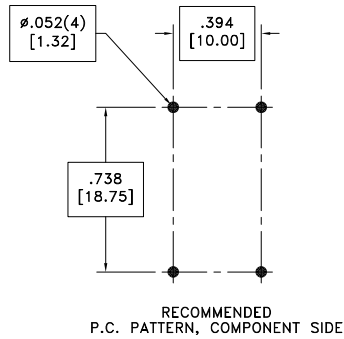
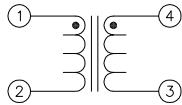
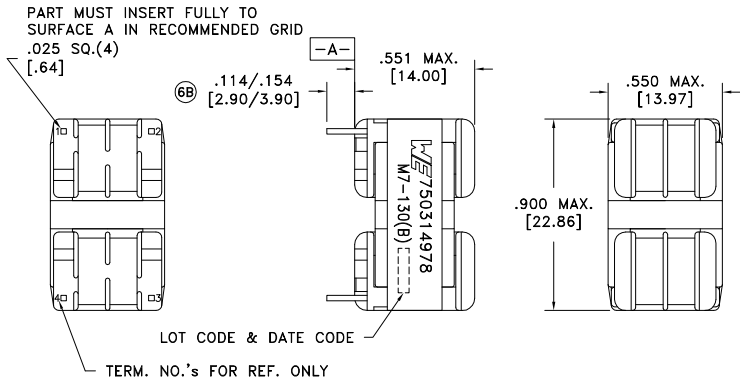
Rated Current: 1.0A (where DC current through both windings raises temperature of part by 40°C).

-Current must be de-rated when ambient temperature is above 85°C.

Designed to meet UL Recognized Insulation System M7-130(B), E106391.

⑥C⑥B Designed to comply with UL 1993 for 347VACrms or VDC.

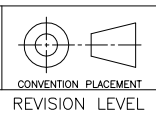
⑥C Designed to comply with UL 840 for 347VACrms or VDC for Overvoltage Category II and Pollution Degree II.



Wire insulation & RoHS status not affected by wire color.  
Wire insulation color may vary depending on availability.

DETAILS SUBJECT TO CHANGE

| REV. | DATE | Packaging Specifications                             |
|------|------|--|
| 6C   | 8/15 | Method: Tray<br>PKG-0822<br>www.we-online.com/midcom |
| 6B   | 6/15 |  |
| 6A   | 5/15 | SEE REVISION SHEET FOR REVISION LEVEL                |



Tolerances unless otherwise specified:  
Angles: ±1°  
Fractions: ±1/64  
Decimals: ±.005 [.13]  
Footprint: ±.001 [.03]

This drawing is dual dimensioned. Dimensions in brackets are in millimeters.

DRAWING TITLE  
⑥C **FILTER**  
COMMON MODE CHOKE

eiSos p/n: 750314978

PART NO.  
**750314978**

SPECIFICATION SHEET 1 OF 1

## X-ON Electronics

Largest Supplier of Electrical and Electronic Components

*Click to view similar products for [Common Mode Chokes / Filters](#) category:*

*Click to view products by [Würth](#) manufacturer:*

Other Similar products are found below :

[74279408](#) [PE-62911NL](#) [PE-64683](#) [ST6118T-R](#) [T8114NLT](#) [RD5122-10-6M0](#) [TCM0806G-350-2P-T](#) [TCM0806G-650-2P-T](#) [IND-0110](#)  
[UAL21V07012500](#) [UAL24VR06500CH](#) [UALSC023000000](#) [UALSC1020JH000](#) [UALSC1520JH000](#) [UALSU16VD30030](#)  
[UALSU16VD40010](#) [UALSU9H0305000](#) [UALSU9HF060300](#) [UALSU9VD070100](#) [36-00037](#) [5701610000](#) [UALW21HS072450](#)  
[UALSU9VD070400](#) [UALSU9HF050500](#) [UALSU9H0208000](#) [UALSCF25081300](#) [UAL24VK06450CH](#) [PLT10HH501100PNB](#)  
[PLT10HH401100PNB](#) [PLT10HH1026R0PNB](#) [PE-67531](#) [EXC-X4CH120X](#) [TLH10UB 113 0R5](#) [2752041447](#) [2752045447](#) [CMS3-11-R](#)  
[7351V](#) [CMF16-153131](#) [744252510](#) [T8116NLT](#) [FE2X10-4-2NL](#) [744253200](#) [744253101](#) [744252220](#) [TX8111NLT](#) [UAL30VR3500470](#)  
[CTX01-19077-R](#) [T8003NLT](#) [CTX01-13663](#) [CTX66-19521-R](#)