

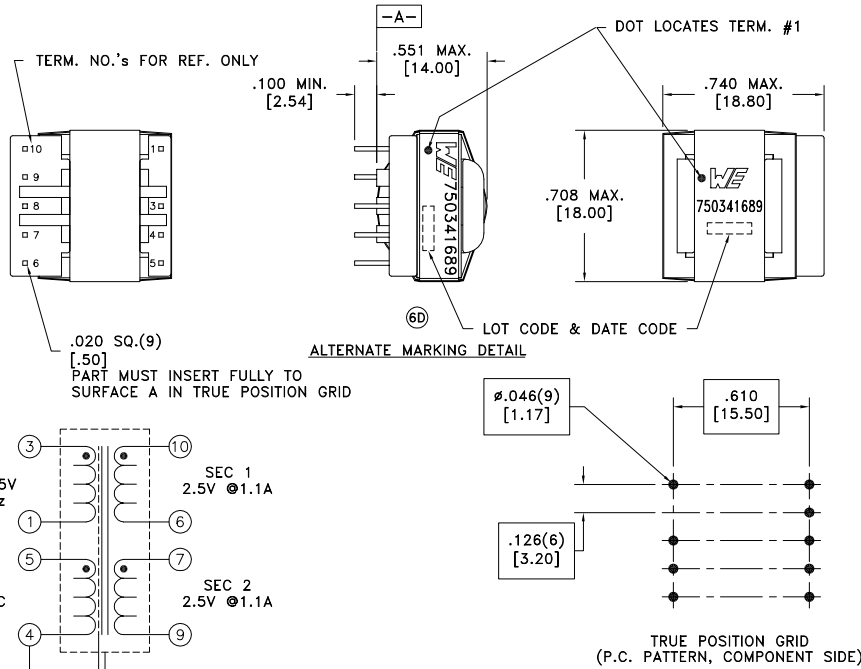
CUSTOMER TERMINAL	RoHS	LEAD(Pb)-FREE
Sn96%, Ag4%	Yes	Yes

more than you expect



ELECTRICAL SPECIFICATIONS @ 25°C unless otherwise noted:

PARAMETER	TEST CONDITIONS	VALUE
D.C. RESISTANCE	3-1 @20°C	3.86 ohms max.
D.C. RESISTANCE	5-4 @20°C	0.400 ohms max.
D.C. RESISTANCE	7-9 @20°C	0.020 ohms max.
D.C. RESISTANCE	10-6 @20°C	0.020 ohms max.
INDUCTANCE	3-1 50kHz, 100mVAC, Ls	1.60mH ±10%
LEAKAGE INDUCTANCE	3-1 tie(4+5, 6+7+9+10), 100kHz, 100mVAC, Ls	60uH max.
DIELECTRIC	1-10 tie(3+4, 6+7), 3500VAC, 1 second	-
DIELECTRIC	3-Core 2500VAC, 1 second	-
DIELECTRIC	10-Core tie(6+7), 1500VAC, 1 second	-
DIELECTRIC	3-10 tie(6+7), 500VAC, 1 second	-
URNS RATIO	(3-1):(5-4)	7.056:1, ±2%
URNS RATIO	(3-1):(10-6)	31.75:1, ±2%
URNS RATIO	(3-1):(7-9)	31.75:1, ±2%



Terminals 1, 4 & 5 are sleeved.

GENERAL SPECIFICATIONS:

OPERATING TEMPERATURE RANGE: -40°C to +125°C.

Designed to comply with the following requirements as defined by IEC60950-1, EN60950-1, UL60950-1/CSA60950-1 and AS/NZS60950.1:
 - Reinforced insulation for a working voltage of 400VDC.

Wire insulation & RoHS status not affected by wire color.
 Wire insulation color may vary depending on availability.

REV.	DATE	Packaging Specifications	CONVENTION PLACEMENT
6D	3/17	Method: Tray	
6C	3/14	PKG-0103	
6B	12/13	www.we-online.com/midcom	
6A	1/13	SEE REVISION SHEET FOR REVISION LEVEL	

Tolerances unless otherwise specified:
 Angles: ±1°
 Decimals: ±.005 [.13]
 Fractions: ±1/64 Footprint: ±.001 [.03]
 This drawing is dual dimensioned. Dimensions in brackets are in millimeters.

DRAWING TITLE
TRANSFORMER
 eiSos p/n: 750341689

PART NO.
750341689
 SPECIFICATION SHEET 1 OF 1



X-ON Electronics

Largest Supplier of Electrical and Electronic Components

Click to view similar products for [Wurth manufacturer](#):

Other Similar products are found below :

[742700](#) [74270062](#) [7446222002](#) [750314624](#) [750341638](#) [30405S](#) [31402](#) [7446321027](#) [744732100](#) [744741471](#) [744772681](#) [744777](#)
[890334025009](#) [178050601](#) [61308021121](#) [615008138221](#) [744999](#) [7446823003](#) [744028](#) [66201621822](#) [691301710003](#) [7446221012](#) [744720](#)
[760390015](#) [760895431](#) [662006236022](#) [64900621822](#) [74436410330](#) [78438357100](#) [890334026014](#) [744839208072](#) [744762A/RFI](#) [7449984](#)
[750310346](#) [861011384014](#) [750817018](#) [7449982](#) [3021717](#) [3020903](#) [885342](#) [2603019321001](#) [2603019021001](#) [2606039021001](#)
[2608019324001](#) [2607019213001](#) [2605039241001](#) [2605049281001](#) [2607029291011](#) [709620200](#) [709951000](#)