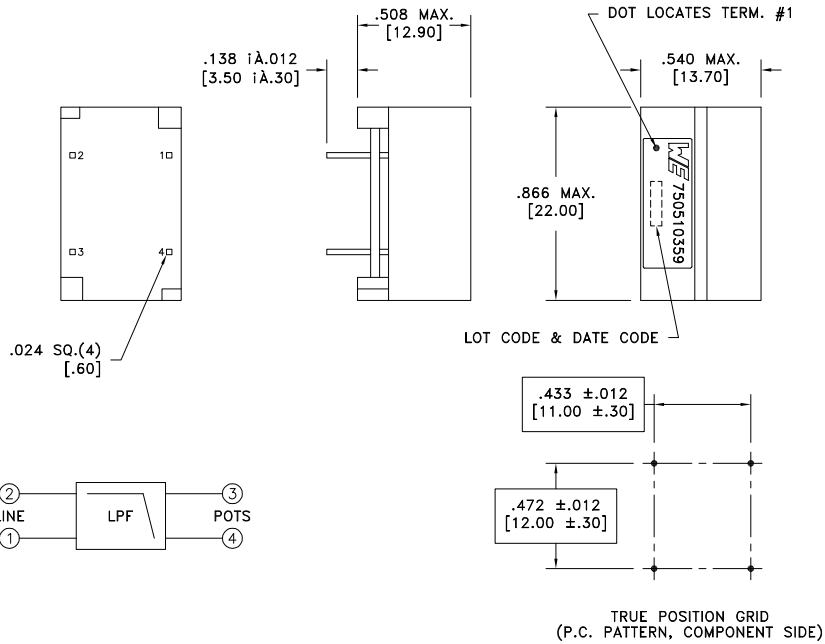


CUSTOMER TERMINAL	RoHS	LEAD(Pb)-FREE
Sn96.5, Ag3%, Cu0.5%	Yes	Yes

more than you expect



6C ELECTRICAL SPECIFICATIONS:

PARAMETER	TEST CONDITIONS	VALUE
D.C. RESISTANCE	@20°C	25 ohms max.
LONGITUDINAL BALANCE	0.2 - 3.0kHz	-58dB max.
FREQUENCY RESPONSE	0.2 - 4.0kHz	±1.5dB
INSERTION LOSS	1004Hz, CO	-0.75dB max.
INSERTION LOSS	1004Hz, CPE	-0.6dB max.
6B RETURN LOSS	200Hz	5dB min.
6B RETURN LOSS	1kHz	8dB min.
6B RETURN LOSS	2.2kHz	5dB min.
LINE IMPEDANCE	0.2 - 4kHz, CO	900 ohms
LINE IMPEDANCE	0.2 - 4kHz, CPE	600 ohms
STOP BAND ATTENUATION	30k - 300kHz	-65dB min.
STOP BAND ATTENUATION	300k - 30MHz	-55dB min.
GROUP DELAY	0.6 - 3.2kHz	200uS max.
GROUP DELAY	3.2 - 4.0kHz	250uS max.
NEAR-END CROSSTALK	1kHz - 30MHz	-65dB max.

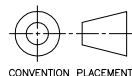
GENERAL SPECIFICATIONS:

6C OPERATING TEMPERATURE RANGE: -40°C to +85°C.

LOOP CURRENT: 100mADC

DETAILS SUBJECT TO CHANGE

REV.	DATE	Packaging Specifications Method:
6C	4/12	www.we-online.com/midcom
6B	6/11	
6A	5/11	SEE REVISION SHEET FOR



Tolerances unless otherwise specified:
 Angles: ±1° Decimals: ±.005 [.13]
 Fractions: ±1/64 Footprint: ±.001 [.03]

This drawing is dual dimensioned. Dimensions in brackets are in millimeters.

DRAWING TITLE

DSL MODULE
ANSI

eiSos p/n: 750510359

PART NO.

750510359



SPECIFICATION SHEET 1 OF 1

X-ON Electronics

Largest Supplier of Electrical and Electronic Components

Click to view similar products for [Pulse Transformers](#) category:

Click to view products by [Würth](#) manufacturer:

Other Similar products are found below :

[E4001NLT](#) [1879401-1](#) [IF-18-0269-N](#) [T1042NLT](#) [T1049NL](#) [PE-68023NL](#) [PH0905NL](#) [PT4163S](#) [PT5010](#) [PA0173NLT](#) [CTX02-14608](#) [PE-65457NLT](#) [T60403-D4721-X088](#) [H1183NLT](#) [CTX33-18971-R](#) [HM2108NLT](#) [HM0068ANLT](#) [PG1427.001NLT](#) [750031353](#) [PH9400.566NLT](#) [PH9400.655ANLT](#) [PH9400.655NLT](#) [PH9385.013NLT](#) [B78307X0001](#) [B78307A2276A003](#) [HX6096FNL](#) [HX6106NLT](#) [P0926NL](#) [HX6096NL](#) [PA3493NLT](#) [P0585ANL](#) [HU4102NL](#) [PH9385.012NLT](#) [PH9400.111NLT](#) [PH9400.211NLT](#) [PH9400.233ANLT](#) [SMQC1553-6](#) [78615/9JC-R](#) [SMQ1553-45](#) [Q1553-45](#) [Q1553-22](#) [Q1553-21](#) [PH9400.211ANLT](#) [TGM-050P3RL](#) [TGMS-1464V6LF](#) [TGRAD-560V8LF](#) [TGMR-360V6LF](#) [P0544](#) [PA0264NLT](#) [T60403-D4215-X014](#)