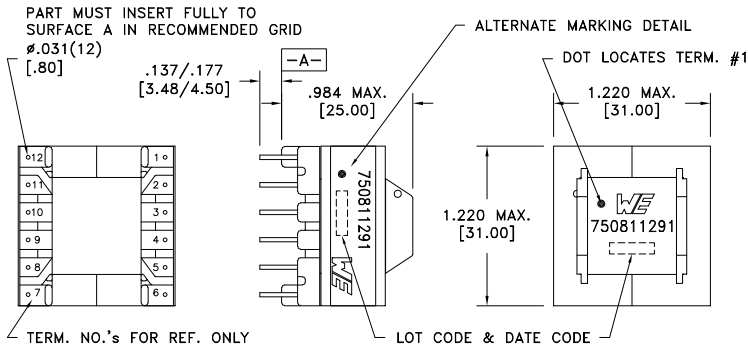
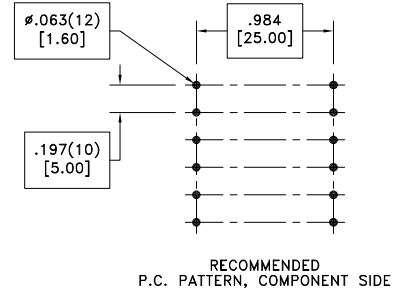
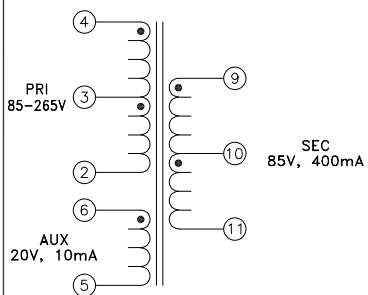


CUSTOMER TERMINAL	RoHS	LEAD(Pb)-FREE
Sn96%, Ag4%	Yes	Yes



ELECTRICAL SPECIFICATIONS @ 25°C unless otherwise noted:

PARAMETER	TEST CONDITIONS	VALUE
D.C. RESISTANCE	4-2 @20°C	0.55 ohms $\pm 10\%$
D.C. RESISTANCE	6-5 @20°C	1.10 ohms $\pm 10\%$
D.C. RESISTANCE	9-11 @20°C	1.23 ohms $\pm 10\%$
INDUCTANCE	4-2 100kHz, 100mVAC, Ls	400.00uH $\pm 10\%$
SATURATION CURRENT	20% rolloff from initial	5.70A
LEAKAGE INDUCTANCE	4-2 tie(9+10+11, 6+5), 100kHz, 100mVAC, Ls	5.0uH typ., 7.0uH max.
DIELECTRIC	2-9 tie(4+5), 4500VAC, 1 second	4500VAC, 1 minute
URNS RATIO	(4-3):(3-2)	1:1, $\pm 2\%$
URNS RATIO	(4-2):(9-11)	1:1, $\pm 2\%$
URNS RATIO	(4-2):(6-5)	4:1, $\pm 2\%$



GENERAL SPECIFICATIONS:

OPERATING TEMPERATURE RANGE: -40°C to +125°C including temp rise.

Designed to comply with the following requirements as defined by IEC61558-2-17:
 - Reinforced insulation for a primary circuit at a working voltage of 400VDC.

Wire insulation & RoHS status not affected by wire color.
 Wire insulation color may vary depending on availability.

REV.	DATE	Packaging Specifications Method: Tray PKG-0872 www.we-online.com/midcom		Tolerances unless otherwise specified: Angles: $\pm 1^\circ$ Fractions: $\pm 1/64$	DRAWING TITLE TRANSFORMER	PART NO. 750811291
6B	2/21			Decimals: $\pm .005$ [.13] Footprint: $\pm .001$ [.03]		
6A	3/11	SEE REVISION SHEET FOR REVISION LEVEL		This drawing is dual dimensioned. Dimensions in brackets are in millimeters.	eiSos p/n: 750811291	SPECIFICATION SHEET 1 OF 1



X-ON Electronics

Largest Supplier of Electrical and Electronic Components

Click to view similar products for [Power Transformers](#) category:

Click to view products by [Würth](#) manufacturer:

Other Similar products are found below :

[ET-030A](#) [F-102X](#) [F-120X](#) [F-14X-1](#) [F-181U](#) [F-18A](#) [F-199U](#) [F-19X](#) [F-202U](#) [F-204U](#) [F-206U](#) [F-227X](#) [F-238U](#) [F-239U-1](#) [F-23U](#) [F24-250-B](#)
[F-242U](#) [F-245U](#) [F-264U](#) [F-265U](#) [F-267U](#) [F-281U](#) [F-283U](#) [F-290X](#) [F-295Z](#) [F-296Z](#) [F-298Z](#) [F-3143P](#) [F-3298Z](#) [F-33U](#) [F-346X](#) [F-35U](#) [F-](#)
[364U](#) [F-392A](#) [F-395X](#) [F-397U](#) [F-412X](#) [F-47U](#) [F-55X-1](#) [F-60U](#) [F-68U](#) [F-71U](#) [F-72Z](#) [F-74U](#) [F-83A](#) [F-84AC](#) [F-85U](#) [F-86U](#) [F-9U](#) [PCT-02](#)