

# MID-OLEFD

## THT Transformers for AC/DC Converters



### EFD20 Characteristics

- For Universal input voltage
- Switching frequency: 68kHz to 100kHz
- Low profile
- Isolation voltage: 4500V<sub>AC</sub> at 1 second
- Operating temp: -40°C to 125°C
- Max LxWxH (mm): 21.50 x 33.80 x 12.00
- Package size: EFD20
- Designed for IEC61558-2 reinforced 400V<sub>DC</sub>

### Applications

- LED lighting
- Offline switching power
- Power electronics
- Electronics ballasts
- White goods

### EFD25 Characteristics

- For universal input voltage
- Switching frequency: 68kHz to 170kHz
- Extended rails
- Tapped aux winding of 6V and 14V or 20V
- Reinforced insulation
- Isolation voltage: 4500V<sub>AC</sub> at 1 second
- Operating temp: -40°C to 125°C
- Max height (mm): 14
- Designed to meet IEC61558-2-16



### EFD20 Electrical Properties

Order Code	U <sub>i</sub> (V <sub>AC</sub> )	U <sub>01</sub> (V)	I <sub>01</sub> (A)	U <sub>02</sub> (V)	I <sub>02</sub> (A)	U <sub>AUX</sub> (V)	L (mH)	I <sub>SAT</sub> (A)	N <sub>PR1</sub> :N <sub>SEC</sub> :N <sub>AUX</sub>	f <sub>switch</sub> (kHz)	U <sub>r</sub> (V <sub>AC</sub> )
750811612	85-265	5	1.90	5	1.9	20	0.8	1.4	5.26 : 0.26 : 0.26 : 1	68-110	4500
7508116313	85-265	12	1.00	12	1.0	20	0.8	1.4	9.09 : 0.27 : 1.18 : 1	68-120	4500
750811644	85-265	24	0.50	24	0.5	20	0.8	1.4	11.11 : 1.88 : 1	68-140	4500
7508112330	85-265	16	1.50	-	-	20	0.8	1.4	6.66 : 0.26 : 0.6 : 1	68-120	4500
7508112512	85-265	32	0.75	-	-	20	0.8	1.4	11.11 : 1.55 : 1	68-170	4500
7508112513	85-265	40	0.60	-	-	20	0.8	1.4	6.66 : 0.8 : 1	68-170	4500
750811613	85-265	5	2.00	12	1.0	20	0.8	1.4	6.66 : 0.6 : 0.6 : 1	68-160	4500
750811614	85-265	5	2.00	24	0.5	20	0.8	1.4	8.33 : 1.16 : 1.16 : 1	68-190	4500

### EFD25 Electrical Properties

Order Code	U <sub>i</sub> (V <sub>AC</sub> )	U <sub>01</sub> (V)	I <sub>01</sub> (A)	U <sub>02</sub> (V)	I <sub>02</sub> (A)	U <sub>AUX</sub> (V)	L (mH)	I <sub>SAT</sub> (A)	N <sub>PR1</sub> :N <sub>SEC</sub> :N <sub>AUX</sub>	f <sub>switch</sub> (kHz)	U <sub>r</sub> (V <sub>AC</sub> )
750811512	85-265	5	1.6	5	1.6	20	0.8	2.0	20 : 1 : 1 : 2.75 : 1.25	68-120	4500
7508116314	85-265	12	1.3	12	1.3	20	0.5	2.1	16.66 : 2 : 2 : 2.33 : 1	68-110	4500
750811645	85-265	24	0.7	24	0.7	20	0.5	2.0	16.66 : 4 : 4 : 2.33 : 1	68-100	4500
7508112334	85-265	16	1.6	-	-	20	0.4	2.2	16 : 2.33 : 2 : 1	68-110	4500
7508112514	85-265	32	1.0	-	-	20	0.5	1.9	16 : 4.66 : 2 : 1	68-115	4500
7508112515	85-265	40	0.8	-	-	20	0.5	1.9	16.66 : 6.33 : 2.33 : 1	68-105	4500
750811616	85-265	5	1.7	12	2.0	20	0.5	2.5	20 : 1 : 2.33 : 2.66 : 1.33	68-170	4500
750811617	85-265	5	1.1	24	0.6	20	0.8	2.0	20 : 4.5 : 1 : 2.75 : 1.25	68-170	4500

# MID-OLEFD

## SMD Transformers for AC/DC Converters

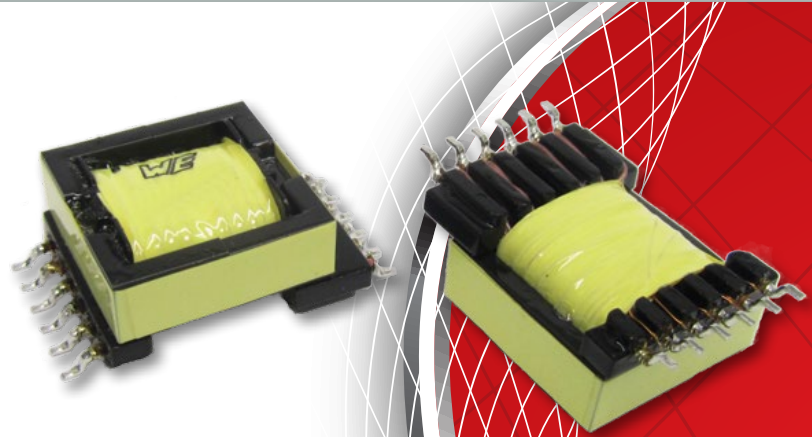


### Characteristics

- Low profile
- For Universal input voltage
- Switching frequency: 68kHz to 250kHz
- Isolation voltage: 4500V<sub>AC</sub> at 1 second
- Operating temp: -40°C to 125°C
- Max height (mm): 12
- Package size: EFD20 12-Pin, SMD-H EXT
- Designed to meet IEC61558-2 reinforced 400V<sub>DC</sub>

### Applications

- LED lighting
- Offline switching power
- Power electronics
- Electronic ballasts
- White goods



### Electrical Properties

Order Code	U <sub>i</sub> (V <sub>AC</sub> )	U <sub>01</sub> (V)	I <sub>01</sub> (A)	U <sub>02</sub> (V)	I <sub>02</sub> (A)	U <sub>03</sub> (V)	I <sub>03</sub> (A)	U <sub>AUX</sub> (V)	L (mH)	I <sub>SAT</sub> (A)	N <sub>PR</sub> :N <sub>SEC</sub> :N <sub>AUX</sub>	f <sub>switch</sub> (kHz)	U <sub>i</sub> (V <sub>AD</sub> )
750811611	85-265	5	2.00	5	2.00	-	-	6 & 14 or 20	0.8	1.4	20 : 0.833 : 0.833 : 2.16 : 1	68-100	4500
7508116312	85-265	12	1.00	12	1.00	-	-	6 & 14 or 20	0.8	1.4	20 : 1.8 : 1.8 : 2.2 : 1	68-120	4500
750811643	85-265	24	0.50	24	0.50	-	-	6 & 14 or 20	0.8	1.4	20 : 3.6 : 3.6 : 2.2 : 1	68-120	4500
7508112327	85-265	16	1.30	-	-	-	-	6 & 14 or 20	0.8	1.4	20 : 2.4 : 2.2 : 1	68-130	4500
7508112510	85-265	32	0.75	-	-	-	-	6 & 14 or 20	0.8	1.4	20 : 4.8 : 2.2 : 1	68-120	4500
7508112511	85-265	40	0.60	-	-	-	-	6 & 14 or 20	0.8	1.4	20 : 6 : 2.2 : 1	68-120	4500
750811913	85-265	5	1.25	5	1.25	7	1.1	6 & 14 or 20	0.8	1.4	16.66 : 0.833 : 0.833 : 1.166 : 2.166 : 1	68-130	4500
750811914	85-265	5	1.30	5	1.30	19	0.5	6 & 14 or 20	0.8	1.4	20 : 0.8 : 0.8 : 2.8 : 2.2 : 1	68-140	4500

## **X-ON Electronics**

Largest Supplier of Electrical and Electronic Components

*Click to view similar products for [Power Transformers](#) category:*

*Click to view products by [Würth](#) manufacturer:*

Other Similar products are found below :

[ET-030A](#) [F-102X](#) [F-120X](#) [F-14X-1](#) [F-181U](#) [F-18A](#) [F-199U](#) [F-19X](#) [F-202U](#) [F-204U](#) [F-206U](#) [F-227X](#) [F-238U](#) [F-239U-1](#) [F-23U](#) [F24-250-B](#)  
[F-242U](#) [F-245U](#) [F-264U](#) [F-265U](#) [F-267U](#) [F-281U](#) [F-283U](#) [F-290X](#) [F-295Z](#) [F-296Z](#) [F-298Z](#) [F-3143P](#) [F-3298Z](#) [F-33U](#) [F-346X](#) [F-35U](#) [F-](#)  
[364U](#) [F-392A](#) [F-395X](#) [F-397U](#) [F-412X](#) [F-47U](#) [F-55X-1](#) [F-60U](#) [F-68U](#) [F-71U](#) [F-72Z](#) [F-74U](#) [F-83A](#) [F-84AC](#) [F-85U](#) [F-86U](#) [F-9U](#) [PCT-02](#)