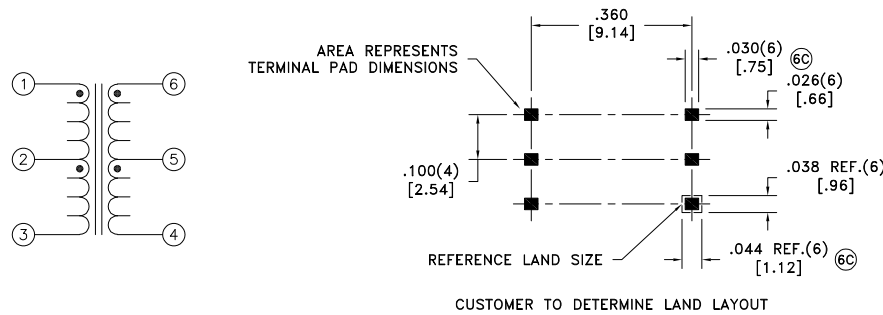
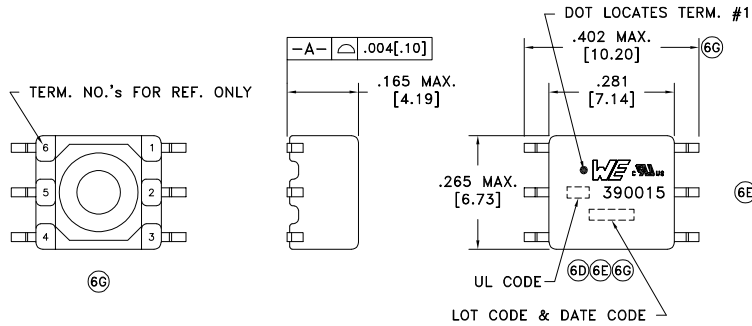


CUSTOMER TERMINAL	RoHS	LEAD(Pb)-FREE
Sn96%, Ag4%	Yes	Yes



ELECTRICAL SPECIFICATIONS @ 25°C unless otherwise noted:

PARAMETER	TEST CONDITIONS	VALUE
D.C. RESISTANCE	1-3 @20°C	0.35 ohms max.
D.C. RESISTANCE	6-4 @20°C	0.57 ohms max.
INDUCTANCE	1-3 10kHz, 100mVAC, Ls	475uH min.
INTERWINDING CAPACITANCE	1-6 100kHz, 10mVAC, Cs	17.5pF typ.
DIELECTRIC	1-6 3125VAC, 1 second	2500VAC, 1 minute
URNS RATIO	(6-4):(1-3)	2:1, ±2%



- GENERAL SPECIFICATIONS:**
- 6F 6B OPERATING TEMPERATURE RANGE: -40°C to +125°C including temp rise.
  - 6F CURRENT RATING: 350mAAC
  - VOLTAGE-TIME: 11VuS
  - 6B Designed to comply with the following requirements as defined by IEC60950-1, EN60950-1, UL60950-1/CSA60950-1 and AS/NZS60950.1:
    - Functional insulation for a primary circuit at a working voltage of 400Vrms.
  - 6E Qualified to AEC-Q200.

Wire insulation & RoHS status not affected by wire color.  
Wire insulation color may vary depending on availability.

6D

AGENCY NUMBER	
UL CODE FILE# E205930	CH
UL60950-1	E205930
CSA60950-1 (Via CUL)	E205930

REV.	DATE	Packaging Specifications
6H	4/21	Method: Tape & Reel
6G	12/20	PKG-0895
6F	6/18	www.we-online.com/midcom
6E	6/16	SEE REVISION SHEET FOR REVISION LEVEL

Tolerances unless otherwise specified:  
Angles: ±1°      Decimals: ±.005 [.13]  
Fractions: ±1/64      Footprint: ±.005 [.13]

This drawing is dual dimensioned. Dimensions in brackets are in millimeters.

DRAWING TITLE  
**TRANSFORMER**

eiSos p/n: 760390015

PART NO.  
**760390015**

SPECIFICATION SHEET 1 OF 1

## **X-ON Electronics**

Largest Supplier of Electrical and Electronic Components

*Click to view similar products for [Power Transformers](#) category:*

*Click to view products by [Würth](#) manufacturer:*

Other Similar products are found below :

[ET-030A](#) [F-102X](#) [F-120X](#) [F-14X-1](#) [F-181U](#) [F-18A](#) [F-199U](#) [F-19X](#) [F-202U](#) [F-204U](#) [F-206U](#) [F-227X](#) [F-238U](#) [F-239U-1](#) [F-23U](#) [F24-250-B](#)  
[F-242U](#) [F-245U](#) [F-264U](#) [F-265U](#) [F-267U](#) [F-281U](#) [F-283U](#) [F-290X](#) [F-295Z](#) [F-296Z](#) [F-298Z](#) [F-3143P](#) [F-3298Z](#) [F-33U](#) [F-346X](#) [F-35U](#) [F-](#)  
[364U](#) [F-392A](#) [F-395X](#) [F-397U](#) [F-412X](#) [F-47U](#) [F-55X-1](#) [F-60U](#) [F-68U](#) [F-71U](#) [F-72Z](#) [F-74U](#) [F-83A](#) [F-84AC](#) [F-85U](#) [F-86U](#) [F-9U](#) [PCT-02](#)