

Order Code	L (mm)	Thread Size	Wrench Size
970050244	5	M2.0	SW 4
970060244	6	M2.0	SW 4
970070244	7	M2.0	SW 4
970080244	8	M2.0	SW 4
970100244	10	M2.0	SW 4
970120244	12	M2.0	SW 4
970150244	15	M2.0	SW 4
970180244	18	M2.0	SW 4
970200244	20	M2.0	SW 4
970050154	5	M2.5	SW 5
970060154	6	M2.5	SW 5
970070154	7	M2.5	SW 5
970080154	8	M2.5	SW 5
970090154	9	M2.5	SW 5
970100154	10	M2.5	SW 5
970120154	12	M2.5	SW 5
970150154	15	M2.5	SW 5
970200154	20	M2.5	SW 5
970050354	5	M3.0	SW 5
970060354	6	M3.0	SW 5
970070354	7	M3.0	SW 5
970080354	8	M3.0	SW 5
970100354	10	M3.0	SW 5
970120354	12	M3.0	SW 5
970150354	15	M3.0	SW 5
970180354	18	M3.0	SW 5
970200354	20	M3.0	SW 5
970050324	5	M3.0	SW 5.5
970060324	6	M3.0	SW 5.5
970070324	7	M3.0	SW 5.5
970080324	8	M3.0	SW 5.5
970090324	9	M3.0	SW 5.5
970100324	10	M3.0	SW 5.5
970110324	11	M3.0	SW 5.5
970120324	12	M3.0	SW 5.5
970130324	13	M3.0	SW 5.5
970140324	14	M3.0	SW 5.5
970150324	15	M3.0	SW 5.5
970050474	5	M4.0	SW 7
970070474	7	M4.0	SW 7
970080474	8	M4.0	SW 7
970100474	10	M4.0	SW 7
970120474	12	M4.0	SW 7
970130474	13	M4.0	SW 7
970150474	15	M4.0	SW 7
970170474	17	M4.0	SW 7

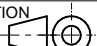
Würth Elektronik eiSos GmbH & Co. KG  
EMC & Inductive Solutions

Max-Eyth-Str. 1  
74638 Waldenburg  
Germany  
Tel. +49 79 42 945 - 0

www.we-online.com  
eiSos@we-online.com

CREATED  
D. Fandrey

CHECKED  
S. Klingler

PROJECTION METHOD  SCALE 5:1

DESCRIPTION  
**AsSBR11**  
**Brass Spacer Stud**  
**Metric Thread int./int.**

MATERIAL  
CuZn39Pb3

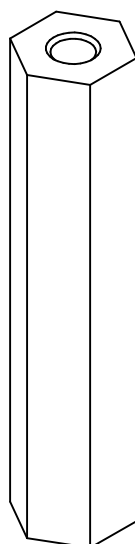
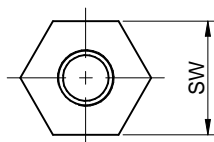
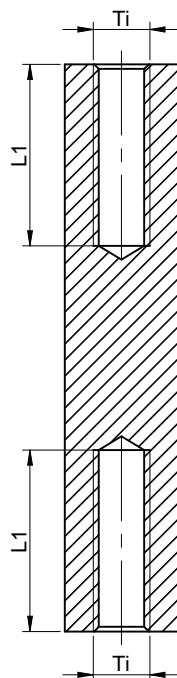
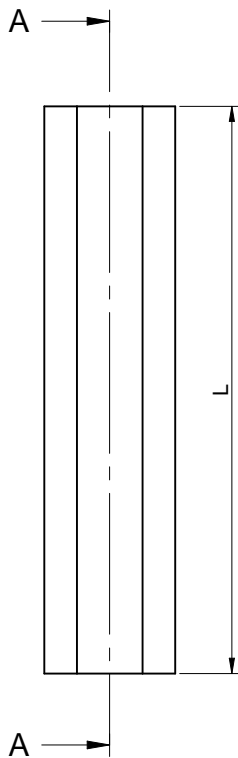
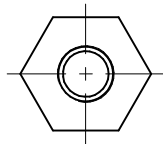
GENERAL TOLERANCE  
DIN ISO 2768 T1m

ORDER CODE  
970xx0xx4

WEIGHT STATUS  
Released

REV DATE  
1.0 2015-01-20

PAGE  
DE 1 / 1



Order Code	L (mm)	L <sub>1</sub> (mm)	Thread Size	Wrench Size
970250244	25	6,0	M2.0	SW 4
970300244	30	6,0	M2.0	SW 4
970050144	5	2,5	M2.5	SW 4
970080144	8	4,0	M2.5	SW 4
970090144	9	4,5	M2.5	SW 4
970100144	10	5,0	M2.5	SW 4
970120144	12	6,0	M2.5	SW 4
970140144	14	5,5	M2.5	SW 4
970150144	15	7,5	M2.5	SW 4
970160144	16	8,0	M2.5	SW 4
970200144	20	10,0	M2.5	SW 4
970110154	11	5,5	M2.5	SW 5
970160154	16	8,0	M2.5	SW 5
970250154	25	8,0	M2.5	SW 5
970300154	30	8,0	M2.5	SW 5
970110354	11	5,5	M3.0	SW 5
970130354	13	6,5	M3.0	SW 5
970140354	14	7,0	M3.0	SW 5
970160354	16	8,0	M3.0	SW 5
970170354	17	8,5	M3.0	SW 5
970190354	19	9,5	M3.0	SW 5
970220354	22	10,0	M3.0	SW 5
970250354	25	10,0	M3.0	SW 5
970300354	30	10,0	M3.0	SW 5
970350354	35	10,0	M3.0	SW 5
970160324	16	8,0	M3.0	SW 5.5
970170324	17	8,0	M3.0	SW 5.5
970180324	18	8,0	M3.0	SW 5.5
970200324	20	10,0	M3.0	SW 5.5
970250324	25	10,0	M3.0	SW 5.5
970300324	30	10,0	M3.0	SW 5.5
970350324	35	10,0	M3.0	SW 5.5
970400324	40	10,0	M3.0	SW 5.5
970450324	45	10,0	M3.0	SW 5.5
970500324	50	10,0	M3.0	SW 5.5
970600324	60	10,0	M3.0	SW 5.5
970180474	18	9,0	M4.0	SW 7
970200474	20	10,0	M4.0	SW 7
970300474	30	10,0	M4.0	SW 7
970350474	35	10,0	M4.0	SW 7
970400474	40	10,0	M4.0	SW 7
970500474	50	10,0	M4.0	SW 7
970600474	60	10,0	M4.0	SW 7
970700474	70	10,0	M4.0	SW 7
970800474	80	10,0	M4.0	SW 7

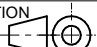
Würth Elektronik eiSos GmbH & Co. KG  
EMC & Inductive Solutions

Max-Eyth-Str. 1  
74638 Waldenburg  
Germany  
Tel. +49 79 42 945 - 0

www.we-online.com  
eiSos@we-online.com

CREATED  
D. Fandrey

CHECKED  
S. Klingler

PROJECTION METHOD  SCALE 5:1

DESCRIPTION  
**AsSBR11  
Brass Spacer Stud  
Metric Thread int./int.**

MATERIAL  
CuZn39Pb3  
GENERAL TOLERANCE  
DIN ISO 2768 T1m  
ORDER CODE  
970xx0xx4

WEIGHT STATUS  
Released

REV DATE  
1.0 2015-01-20

PAGE  
DE 1 / 1

## **X-ON Electronics**

Largest Supplier of Electrical and Electronic Components

*Click to view similar products for [Wurth manufacturer](#):*

Other Similar products are found below :

[742700](#) [74270062](#) [7446222002](#) [750314624](#) [750341638](#) [30405S](#) [31402](#) [7446321027](#) [744732100](#) [744741471](#) [744772681](#) [744777](#)  
[890334025009](#) [178050601](#) [61308021121](#) [615008138221](#) [744999](#) [7446823003](#) [744028](#) [66201621822](#) [691301710003](#) [7446221012](#) [744720](#)  
[760390015](#) [760895431](#) [662006236022](#) [64900621822](#) [74436410330](#) [78438357100](#) [890334026014](#) [744839208072](#) [744762A/RFI](#) [7449984](#)  
[750310346](#) [861011384014](#) [750817018](#) [7449982](#) [3021717](#) [3020903](#) [885342](#) [2603019321001](#) [2603019021001](#) [2606039021001](#)  
[2608019324001](#) [2607019213001](#) [2605039241001](#) [2605049281001](#) [2607029291011](#) [709620200](#) [709951000](#)