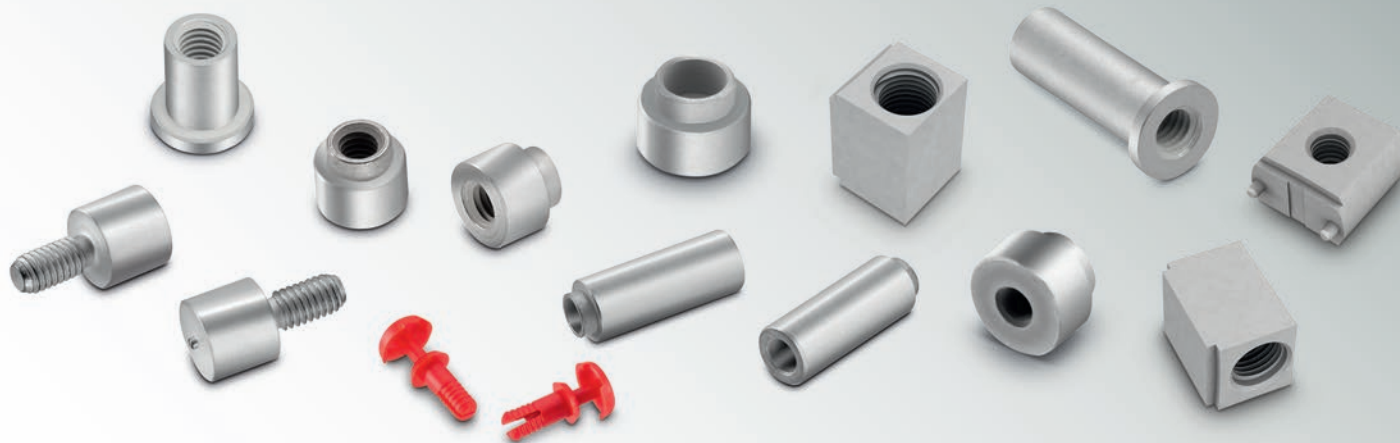




# DESIGN KIT SMD Spacer



## TECHNICAL DATA:

Thread Size : M2 / M2.5 / M3  
Inner Diameter: 2.25 / 2.7 / 3.2 / 3.3 mm  
Length: 1 – 15 mm

Order Code 977 990  
Version 2.0

# DESIGN KIT SMD Spacer



All articles are available on reel and bulk.  
Please add a 'R' on the end of the article number for tape and reel types.



WA-SMSE	<b>977 105 036 0</b>
	Thread Size: M3
	Length: 5 mm

<b>977 110 036 0</b>
Thread Size: M3
Length: 10 mm

<b>977 115 036 0</b>
Thread Size: M3
Length: 15 mm

WA-SMSI	<b>977 402 024 3</b>
	Thread Size: M2
	Length: 2 mm

<b>977 403 024 3</b>
Thread Size: M2
Length: 3 mm

<b>977 405 024 3</b>
Thread Size: M2
Length: 5 mm

<b>977 401 015 1</b>
Thread Size: M2.5
Length: 1 mm

<b>977 403 015 1</b>
Thread Size: M2.5
Length: 3 mm

<b>977 405 015 1</b>
Thread Size: M2.5
Length: 5 mm

<b>977 408 015 1</b>
Thread Size: M2.5
Length: 8 mm

<b>977 402 536 0</b>
Thread Size: M3
Length: 2.5 mm

<b>977 403 036 0</b>
Thread Size: M3
Length: 3 mm

<b>977 405 036 0</b>
Thread Size: M3
Length: 5 mm

<b>977 410 036 0</b>
Thread Size: M3
Length: 10 mm

WA-SMST	<b>977 401 094 3</b>
	Inner Diameter: 2.25 mm
	Length: 1 mm

<b>977 404 094 3</b>
Inner Diameter: 2.25 mm
Length: 4 mm

<b>977 408 094 3</b>
Inner Diameter: 2.25 mm
Length: 8 mm

<b>977 401 595 1</b>
Inner Diameter: 2.7 mm
Length: 1.5 mm

<b>977 404 095 1</b>
Inner Diameter: 2.7 mm
Length: 4 mm

<b>977 406 095 1</b>
Inner Diameter: 2.7 mm
Length: 6 mm

<b>977 404 096 0</b>
Inner Diameter: 3.3 mm
Length: 4 mm

<b>977 407 096 0</b>
Inner Diameter: 3.3 mm
Length: 7 mm

<b>977 415 096 0</b>
Inner Diameter: 3.3 mm
Length: 15 mm

WP-SMRA	<b>746 630 3</b>
	Thread Size: M3
	Length: 7 mm

<b>746 631 3</b>
Thread Size: M3
Length: 5.5 mm

<b>746 630 0</b>
Inner Diameter: 3.3 mm
Length: 7 mm

<b>746 631 0</b>
Inner Diameter: 3.3 mm
Length: 5.5 mm

WA-SMSSR	<b>700 977 6</b>
	Body Diameter: 2 mm
	Height: 7.65 mm

<b>977 603 096 0</b>
Inner Diameter: 2 mm
Length: 3 mm

<b>977 605 096 0</b>
Inner Diameter: 2 mm
Length: 5 mm

<b>977 610 096 0</b>
Inner Diameter: 2 mm
Length: 10 mm

WA-SMSR	<b>977 502 636 0</b>
	Thread Size: M3
	Length: 2.6 mm

<b>977 505 196 0</b>
Inner Diameter: 3.2 mm
Length: 5.1 mm

<b>977 508 636 0</b>
Thread Size: M3
Length: 8.6 mm

<b>977 511 696 0</b>
Inner Diameter: 3.2 mm
Length: 11.6 mm

EMC COMPONENTS | INDUCTORS | TRANSFORMERS | RF COMPONENTS | CIRCUIT PROTECTION | EMC SHIELDING MATERIAL | LEDs | CONNECTORS | SWITCHES | **ASSEMBLY TECHNIQUE** | POWER ELEMENTS

**Important information:** Würth Elektronik's design kits contain reference components. These components correspond with the current product development status on the day of supply. Exchange of the reference components to components with up-to-date product development status is not carried out automatically. No liability is taken for the use of these reference components. Therefore, please request new samples prior to releases for series production and product release. **Other dimensions are in catalogue**

Please check datasheets on [www.we-online.com](http://www.we-online.com) for specifications. Würth Elektronik eiSos GmbH & Co. KG, EMC & Inductive Solutions. © 2016

[www.we-online.com](http://www.we-online.com)

**All products  
ex stock!**

## X-ON Electronics

Largest Supplier of Electrical and Electronic Components

*Click to view similar products for [Component Kits](#) category:*

*Click to view products by [Wurth](#) manufacturer:*

Other Similar products are found below :

[T107/C](#) [5210211](#) [KIT-ENERGY HARVEST](#) [KIT PROTO SHIELDS](#) [GSK-1004](#) [G30-7100](#) [G10-7100](#) [G30-8000](#) [BOX3-1455L-BK](#) [4504](#)  
[B03-7100](#) [B04-7100](#) [B05-7100](#) [2450L/C603D](#) [5500L/C402D](#) [L201DC](#) [L/C-201DL](#) [L/C-805DS](#) [KBOX1-AC-SV-PR2H](#) [L/C-603DS](#)  
[RGCBNJ660P22](#) [B10-8000](#) [B20-7100](#) [B45-8000](#) [MH-1](#) [MH-2](#) [TW-E41-1020](#) [TW-E41-1060](#) [B04-8000](#) [B03-8000](#) [G10-8000](#) [B05-8000](#)  
[G20-7100](#) [GSK-820](#) [GSK-1001](#) [GSK-944](#) [GSK-409](#) [GSK-918](#) [JRG01-EXP2](#) [JRG01-EXP1](#) [G20-8000](#) [977990](#) [PTATKIT](#) [CCAUTO-LAB1](#)  
[JRG01-KIT](#) [JRG01-PARTS](#) [JRG01-PCB](#) [6002-240-001](#) [GSC-DL020](#) [GSK-1005](#)