

General Description

The SN74HC/HCT161 is a synchronous presettable binary counter with an internal look-ahead carry. Synchronous operation is provided by having all flip-flops clocked simultaneously on the positive-going edge of the clock (CP). The outputs (Q0 to Q3) of the counters may be preset HIGH or LOW. A LOW at the parallel enable input (\overline{PE}) disables the counting action and causes the data at the data inputs (D0 to D3) to be loaded into the counter on the positive-going edge of the clock. Preset takes place regardless of the levels at count enable inputs (CEP and CET). A LOW at the master reset input (\overline{MR}) sets Q0 to Q3 LOW regardless of the levels at input pins CP, \overline{PE} , CET and CEP (thus providing an asynchronous clear function). The look-ahead carry simplifies serial cascading of the counters. Both CEP and CET must be HIGH to count. The CET input is fed forward to enable the terminal count output (TC). The TC output thus enabled will produce a HIGH output pulse of a duration approximately equal to a HIGH output of Q0. This pulse can be used to enable the next cascaded stage. The maximum clock frequency for the cascaded counters is determined by the CP to TC propagation delay and CEP to CP set-up time, according to the following formula: $f_{max} = 1 / (t_{p(max)}(CP \text{ to } TC) + t_{SU}(CEP \text{ to } CP))$

Inputs include clamp diodes. This enables the use of current limiting resistors to interface inputs to voltages in excess of V_{CC} .

Features

- Input levels:
For SN74HC161: CMOS level
For SN74HCT161: TTL level
- Synchronous counting and loading
- 2 count enable inputs for n-bit cascading
- Asynchronous reset
- Positive-edge triggered clock
- Specified from -40°C to +105°C
- Packaging information: DIP16/SOP16/TSSOP16

ORDERING INFORMATION

| DEVICE | Package Type | MARKING | Packing | Packing QTY |
|----------------|--------------|----------|---------|-------------|
| SN74HC161N | DIP-16 | 74HC161N | Tube | 1000/Box |
| SN74HC161DTR | SOP-16 | 74HC161 | Tape | 2500/Reel |
| SN74HCT161DTR | SOP-16 | 74HCT161 | Tape | 2500/Reel |
| SN74HCT161TDTR | TSSOP-16 | 74HCT161 | Tape | 3000/Reel |

Block Diagram And Pin Description

Block Diagram

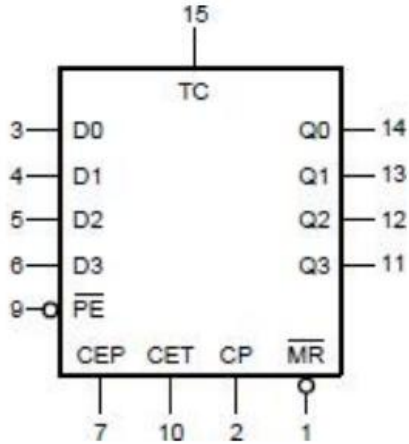


Figure 1. Logic symbol

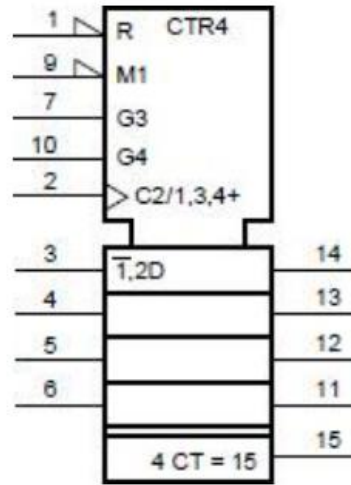


Figure 2. IEC Logic symbol

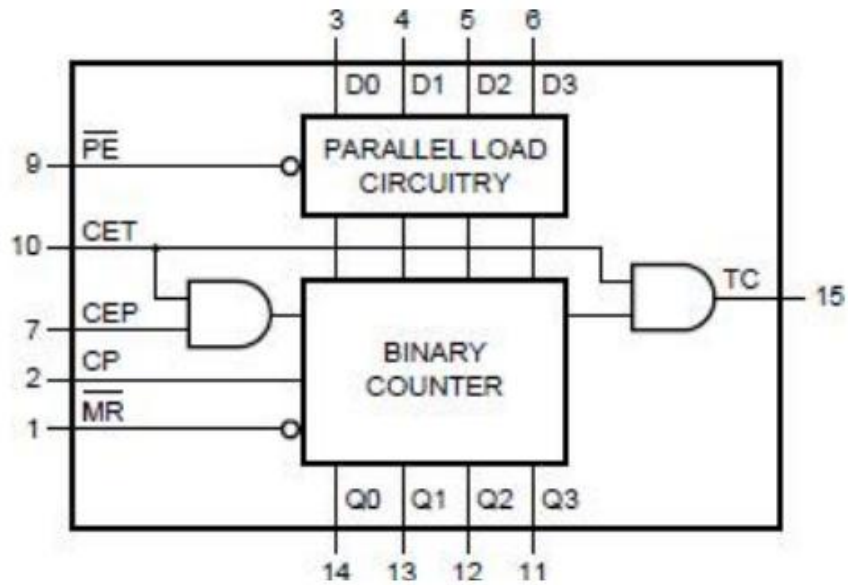


Figure 3. Functional diagram

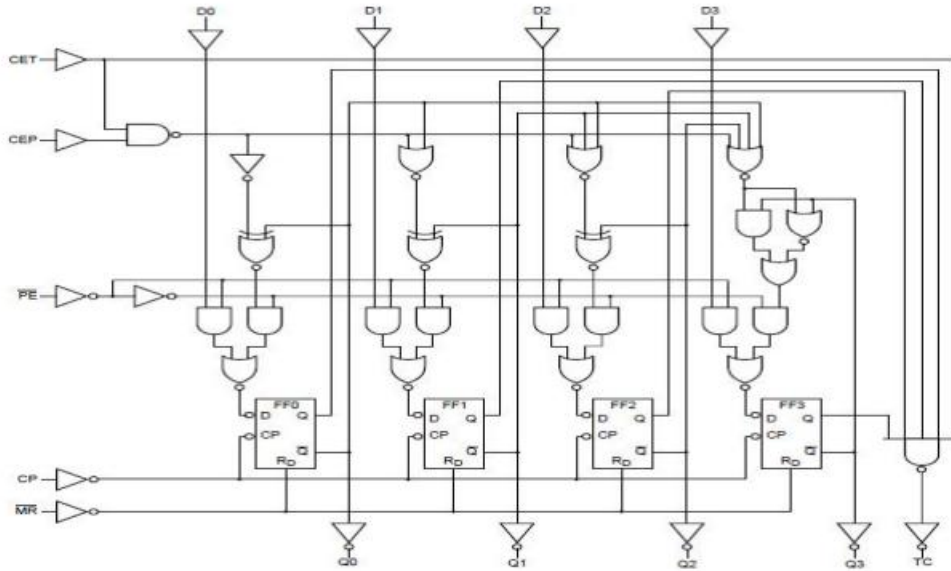


Figure 4. Logic diagram

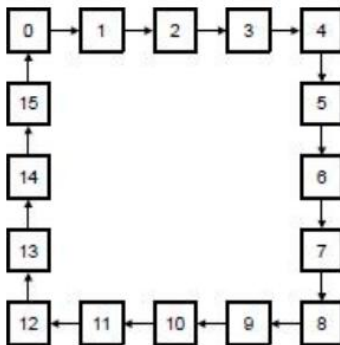


Figure 5. State diagram

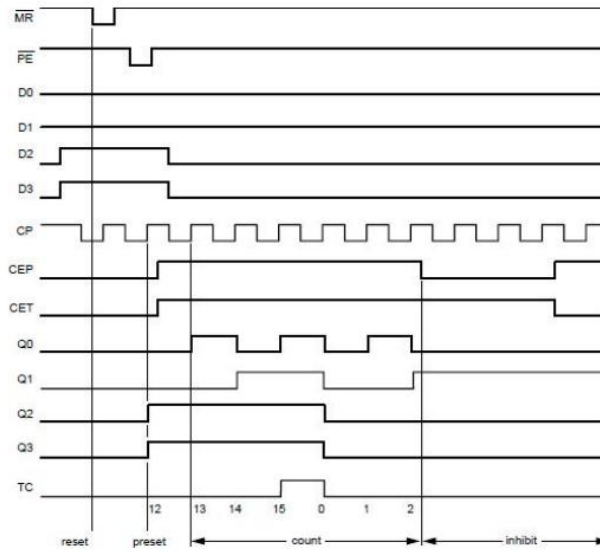
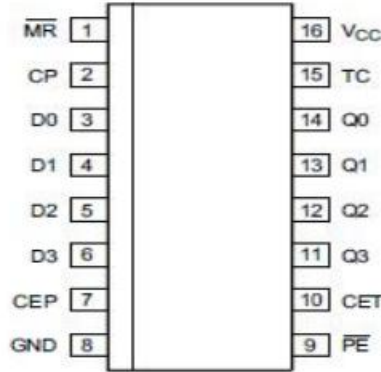


Figure 6. Typical timing sequence

Pin Configurations



Pin Description

| Pin No. | Pin Name | Description |
|---------|-----------------|---|
| 1 | \overline{MR} | asynchronous master reset(active LOW) |
| 2 | CP | clock input(LOW-to-HIGH,edge triggered) |
| 3 | D0 | data input |
| 4 | D1 | data input |
| 5 | D2 | data input |
| 6 | D3 | data input |
| 7 | CEP | count enable input |
| 8 | GND | ground(0V) |
| 9 | \overline{PE} | parallel enable input(active LOW) |
| 10 | CET | count enable carry input |
| 11 | Q3 | flip-flop output |
| 12 | Q2 | flip-flop output |
| 13 | Q1 | flip-flop output |
| 14 | Q0 | flip-flop output |
| 15 | TC | terminal count output |
| 16 | V _{CC} | supply voltage |

Function Table

| Operating mode | Input | | | | | | Output | |
|------------------|-----------------|----|-----|-----|-----------------|----|----------------|-----|
| | \overline{MR} | CP | CEP | CET | \overline{PE} | Dn | Qn | TC |
| reset(clear) | L | X | X | X | X | X | L | L |
| parallel load | H | ↑ | X | X | l | l | L | L |
| | H | ↑ | X | X | l | h | H | [2] |
| count | H | ↑ | h | h | h | X | count | [2] |
| hold(do nothing) | H | X | l | X | h | X | q _n | [2] |
| | H | X | X | l | h | X | q _n | L |

Note:

- [1] H=HIGH voltage level; L=LOW voltage level; X=don't care; ↑=LOW-to-HIGH clock transition;
 l=LOW voltage level one set-up time prior to the LOW-to-HIGH clock transition;
 h=HIGH voltage level one set-up time prior to the LOW-to-HIGH CP transition;
 q=lower case letters indicate the state of the referenced output one set-up time prior to the LOW-to-HIGH CP transition.
- [2] The TC output is HIGH when CET is HIGH and the counter is at terminal count (HLLH).

Electrical Parameter

Absolute Maximum Ratings (Voltages are referenced to GND (ground=0V), unless otherwise specified.)

| Parameter | Symbol | Conditions | Min. | Max. | Unit |
|-------------------------|------------------|--|------|------|------|
| supply voltage | V _{CC} | - | -0.5 | +7.0 | V |
| input clamping current | I _{IK} | V _I < -0.5V or V _I > V _{CC} +0.5V | - | ±20 | mA |
| output clamping current | I _{OK} | V _O < -0.5V or V _O > V _{CC} +0.5V | - | ±20 | mA |
| output current | I _O | -0.5V < V _O < V _{CC} +0.5V | - | ±25 | mA |
| supply current | I _{CC} | - | - | +50 | mA |
| ground current | I _{GND} | - | -50 | - | mA |
| storage temperature | T _{stg} | - | -65 | +150 | °C |
| total power dissipation | P _{tot} | - | - | 500 | mW |
| soldering temperature | T _L | 10s | DIP | 245 | °C |
| | | | SOP | 250 | |

Note:

- [1] For DIP16 packages: above 70°C the value of P_{tot} derates linearly with 12mW/K.
 [2] For SOP16 packages: above 70°C the value of P_{tot} derates linearly with 8mW/K.
 [3] For (T)SSOP16 packages: above 60°C the value of P_{tot} derates linearly with 5.5mW/K.

Recommended Operating Conditions

| Parameter | Symbol | Conditions | Min. | Typ. | Max. | Unit |
|-------------------------------------|---------------------|---------------|------|------|----------|------|
| SN74HC161 | | | | | | |
| supply voltage | V_{CC} | - | 2.0 | 5.0 | 6.0 | V |
| input voltage | V_I | - | 0 | - | V_{CC} | V |
| output voltage | V_O | - | 0 | - | V_{CC} | V |
| input transition rise and fall rate | $\Delta t/\Delta V$ | $V_{CC}=2.0V$ | - | - | 625 | ns/V |
| | | $V_{CC}=4.5V$ | - | 1.67 | 139 | ns/V |
| | | $V_{CC}=6.0V$ | - | - | 83 | ns/V |
| ambient temperature | T_{amb} | - | -40 | - | +105 | °C |
| SN74HCT161 | | | | | | |
| supply voltage | V_{CC} | - | 4.5 | 5.0 | 5.5 | V |
| input voltage | V_I | - | 0 | - | V_{CC} | V |
| output voltage | V_O | - | 0 | - | V_{CC} | V |
| input transition rise and fall rate | $\Delta t/\Delta V$ | $V_{CC}=4.5V$ | - | 1.67 | 139 | ns/V |
| ambient temperature | T_{amb} | - | -40 | - | +105 | °C |

Electrical Characteristics

DC Characteristics 1 ($T_{amb}=25^{\circ}C$, voltages are referenced to GND (ground=0V), unless otherwise specified.)

| Parameter | Symbol | Conditions | Min. | Typ. | Max. | Unit | |
|---------------------------|----------|--|-----------------------------|------|-----------|---------|---|
| SN74HC161 | | | | | | | |
| HIGH-level input voltage | V_{IH} | $V_{CC}=2.0V$ | 1.5 | 1.2 | - | V | |
| | | $V_{CC}=4.5V$ | 3.15 | 2.4 | - | V | |
| | | $V_{CC}=6.0V$ | 4.2 | 3.2 | - | V | |
| LOW-level input voltage | V_{IL} | $V_{CC}=2.0V$ | - | 0.8 | 0.5 | V | |
| | | $V_{CC}=4.5V$ | - | 2.1 | 1.35 | V | |
| | | $V_{CC}=6.0V$ | - | 2.8 | 1.8 | V | |
| HIGH-level output voltage | V_{OH} | $V_I=V_{IH}$ or V_{IL} | $I_O=-20\mu A; V_{CC}=2.0V$ | 1.9 | 2.0 | - | V |
| | | | $I_O=-20\mu A; V_{CC}=4.5V$ | 4.4 | 4.5 | - | V |
| | | | $I_O=-20\mu A; V_{CC}=6.0V$ | 5.9 | 6.0 | - | V |
| | | | $I_O=-4.0mA; V_{CC}=4.5V$ | 3.98 | 4.32 | - | V |
| | | | $I_O=-5.2mA; V_{CC}=6.0V$ | 5.48 | 5.81 | - | V |
| LOW-level output voltage | V_{OL} | $V_I=V_{IH}$ or V_{IL} | $I_O=20\mu A; V_{CC}=2.0V$ | - | 0 | 0.1 | V |
| | | | $I_O=20\mu A; V_{CC}=4.5V$ | - | 0 | 0.1 | V |
| | | | $I_O=20\mu A; V_{CC}=6.0V$ | - | 0 | 0.1 | V |
| | | | $I_O=4.0mA; V_{CC}=4.5V$ | - | 0.15 | 0.26 | V |
| | | | $I_O=5.2mA; V_{CC}=6.0V$ | - | 0.16 | 0.26 | V |
| input leakage current | I_I | $V_I=V_{CC}$ or GND; $V_{CC}=6.0V$ | - | - | ± 0.1 | μA | |
| supply current | I_{CC} | $V_I=V_{CC}$ or GND; $I_O=0A; V_{CC}=6.0V$ | - | - | 8.0 | μA | |

| | | | | | | | |
|---------------------------|-----------------|--|-----------------|------|------|-----------|---------|
| input apacitance | C_I | - | | - | 3.5 | - | pF |
| SN74HCT161 | | | | | | | |
| HIGH-level input voltage | V_{IH} | $V_{CC}=4.5V$ to $5.5V$ | | 2.0 | 1.6 | - | V |
| LOW-level input voltage | V_{IL} | $V_{CC}=4.5V$ to $5.5V$ | | - | 1.2 | 0.8 | V |
| HIGH-level output voltage | V_{OH} | $V_I=V_{IH}$ or V_{IL} $V_{CC}=4.5V$ | $I_O=-20\mu A$ | 4.4 | 4.5 | - | V |
| | | | $I_O=-4.0\mu A$ | 3.98 | 4.32 | - | V |
| LOW-level output voltage | V_{OL} | $V_I=V_{IH}$ or V_{IL} $V_{CC}=4.5V$ | $I_O=20\mu A$ | - | 0 | 0.1 | V |
| | | | $I_O=4.0\mu A$ | - | 0.15 | 0.26 | V |
| input leakage current | I_I | $V_I=V_{CC}$ or GND; $V_{CC}=5.5V$ | | - | - | ± 0.1 | μA |
| supply current | I_{CC} | $V_I=V_{CC}$ or GND; $I_O=0A$; $V_{CC}=5.5V$ | | - | - | 8.0 | μA |
| Additional Supply currend | ΔI_{CC} | per input pin; $V_I=V_{CC}-2.1V$; other inputs at V_{CC} or GND; $I_O=0V$; $V_{CC}=4.5V$ to $5.5V$ | pin $M\bar{R}$ | - | 95 | 342 | μA |
| | | | pin CP | - | 110 | 396 | μA |
| | | | pin CEP and Dn | - | 25 | 90 | μA |
| | | | pin CET | - | 75 | 270 | μA |
| | | | pin $P\bar{E}$ | - | 30 | 108 | μA |
| input apacitance | C_I | - | | - | 3.5 | - | pF |

DC Characteristics 2

($T_{amb}=-40^{\circ}C$ to $+85^{\circ}C$, voltages are referenced to GND (ground=0V), unless otherwise specified.)

| Parameter | Symbol | Conditions | Min. | Typ. | Max. | Unit | |
|---------------------------|----------|--------------------------|--------------------------------|------|------|------|---|
| SN74HC161 | | | | | | | |
| HIGH-level input voltage | V_{IH} | $V_{CC}=2.0V$ | 1.5 | - | - | V | |
| | | $V_{CC}=4.5V$ | 3.15 | - | - | V | |
| | | $V_{CC}=6.0V$ | 4.2 | - | - | V | |
| LOW-level input voltage | V_{IL} | $V_{CC}=2.0V$ | - | - | 0.5 | V | |
| | | $V_{CC}=4.5V$ | - | - | 1.35 | V | |
| | | $V_{CC}=6.0V$ | - | - | 1.8 | V | |
| HIGH-level output voltage | V_{OH} | $V_I=V_{IH}$ or V_{IL} | $I_O=-20\mu A$; $V_{CC}=2.0V$ | 1.9 | - | - | V |
| | | | $I_O=-20\mu A$; $V_{CC}=4.5V$ | 4.4 | - | - | V |
| | | | $I_O=-20\mu A$; $V_{CC}=6.0V$ | 5.9 | - | - | V |
| | | | $I_O=-4.0mA$; $V_{CC}=4.5V$ | 3.84 | - | - | V |
| | | | $I_O=-5.2mA$; $V_{CC}=6.0V$ | 5.34 | - | - | V |
| LOW-level output voltage | V_{OL} | $V_I=V_{IH}$ or V_{IL} | $I_O=20\mu A$; $V_{CC}=2.0V$ | - | - | 0.1 | V |
| | | | $I_O=20\mu A$; $V_{CC}=4.5V$ | - | - | 0.1 | V |
| | | | $I_O=20\mu A$; $V_{CC}=6.0V$ | - | - | 0.1 | V |
| | | | $I_O=4.0mA$; $V_{CC}=4.5V$ | - | - | 0.33 | V |
| | | | $I_O=5.2mA$; $V_{CC}=6.0V$ | - | - | 0.33 | V |

| | | | | | | | |
|---------------------------|-----------------|---|----------------|------|---|-----------|---------|
| input leakage current | I_I | $V_i = V_{CC}$ or GND; $V_{CC}=6.0V$ | | - | - | ± 1.0 | μA |
| supply current | I_{CC} | $V_i=V_{CC}$ or GND; $I_o=0A$; $V_{CC}=6.0V$ | | - | - | 80 | μA |
| SN74HCT161 | | | | | | | |
| HIGH-level input voltage | V_{IH} | $V_{CC}=4.5V$ to 5.5V | | 2.0 | - | - | V |
| LOW-level input voltage | V_{IL} | $V_{CC}=4.5V$ to 5.5V | | - | - | 0.8 | V |
| HIGH-level output voltage | V_{OH} | $V_i=V_{IH}$ or V_{IL} $V_{CC}=4.5V$ | $I_o=-20\mu A$ | 4.4 | - | - | V |
| | | | $I_o=-4.0mA$ | 3.84 | - | - | V |
| LOW-level output voltage | V_{OL} | $V_i=V_{IH}$ or V_{IL} $V_{CC}=4.5V$ | $I_o=20\mu A$ | - | - | 0.1 | V |
| | | | $I_o=4.0mA$ | - | - | 0.33 | V |
| input leakage current | I_I | $V_i = V_{CC}$ or GND; $V_{CC}=5.5V$ | | - | - | ± 1.0 | μA |
| supply current | I_{CC} | $V_i=V_{CC}$ or GND; $I_o=0A$; $V_{CC}=5.5V$ | | - | - | 80 | μA |
| additional supply current | ΔI_{CC} | per input pin; $V_i=V_{CC}-2.1V$; other inputs at V_{CC} or GND; $I_o=0V$; $V_{CC}=4.5V$ to 5.5V | pin $M\bar{R}$ | - | - | 427.5 | μA |
| | | | pin CP | - | - | 495 | μA |
| | | | pin CEP and Dn | - | - | 112.5 | μA |
| | | | pin CET | - | - | 337.5 | μA |
| | | | pin $P\bar{E}$ | - | - | 135 | μA |

DC Characteristics 3

($T_{amb}=-40^{\circ}C$ to $+105^{\circ}C$, voltages are referenced to GND (ground=0V), unless otherwise specified.)

| Parameter | Symbol | Conditions | | Min. | Typ. | Max. | Unit |
|---------------------------|----------|--------------------------|--------------------------------|------|------|------|------|
| SN74HC161 | | | | | | | |
| HIGH-level input voltage | V_{IH} | $V_{CC}=2.0V$ | | 1.5 | - | - | V |
| | | $V_{CC}=4.5V$ | | 3.15 | - | - | V |
| | | $V_{CC}=6.0V$ | | 4.2 | - | - | V |
| LOW-level input voltage | V_{IL} | $V_{CC}=2.0V$ | | - | - | 0.5 | V |
| | | $V_{CC}=4.5V$ | | - | - | 1.35 | V |
| | | $V_{CC}=6.0V$ | | - | - | 1.8 | V |
| HIGH-level output voltage | V_{OH} | $V_i=V_{IH}$ or V_{IL} | $I_o=-20\mu A$; $V_{CC}=2.0V$ | 1.9 | - | - | V |
| | | | $I_o=-20\mu A$; $V_{CC}=4.5V$ | 4.4 | - | - | V |
| | | | $I_o=-20\mu A$; $V_{CC}=6.0V$ | 5.9 | - | - | V |
| | | | $I_o=-4.0mA$; $V_{CC}=4.5V$ | 3.7 | - | - | V |
| | | | $I_o=-5.2mA$; $V_{CC}=6.0V$ | 5.2 | - | - | V |
| LOW-level output voltage | V_{OL} | $V_i=V_{IH}$ or V_{IL} | $I_o=20\mu A$; $V_{CC}=2.0V$ | - | - | 0.1 | V |
| | | | $I_o=20\mu A$; $V_{CC}=4.5V$ | - | - | 0.1 | V |
| | | | $I_o=20\mu A$; $V_{CC}=6.0V$ | - | - | 0.1 | V |
| | | | $I_o=4.0mA$; $V_{CC}=4.5V$ | - | - | 0.4 | V |

| | | | | | | | |
|---------------------------|-----------------|---|--------------------------|-----|---|-----------|---------|
| | | | $I_o=5.2mA; V_{CC}=6.0V$ | - | - | 0.4 | V |
| input leakage current | I_I | $V_I=V_{CC}$ or GND; $V_{CC}=6.0V$ | | - | - | ± 1.0 | μA |
| supply current | I_{CC} | $V_I=V_{CC}$ or GND; $I_o=0A; V_{CC}=6.0V$ | | - | - | 160 | μA |
| SN74HCT161 | | | | | | | |
| HIGH-level input voltage | V_{IH} | $V_{CC}=4.5V$ to 5.5V | | 2.0 | - | - | V |
| LOW-level input voltage | V_{IL} | $V_{CC}=4.5V$ to 5.5V | | - | - | 0.8 | V |
| HIGH-level output voltage | V_{OH} | $V_I=V_{IH}$ or V_{IL} $V_{CC}=4.5V$ | $I_o=-20\mu A$ | 4.4 | - | - | V |
| | | | $I_o=4.0mA$ | 3.7 | - | - | V |
| LOW-level output voltage | V_{OL} | $V_I=V_{IH}$ or V_{IL} $V_{CC}=4.5V$ | $I_o=20\mu A$ | - | - | 0.1 | V |
| | | | $I_o=4.0mA$ | - | - | 0.4 | V |
| input leakage current | I_I | $V_I=V_{CC}$ or GND; $V_{CC}=5.5V$ | | - | - | ± 1.0 | μA |
| supply current | I_{CC} | $V_I=V_{CC}$ or GND; $I_o=0A; V_{CC}=5.5V$ | | - | - | 160 | μA |
| additional supply current | ΔI_{CC} | $V_I=V_{CC}-2.1V$; other inputs at V_{CC} or GND; $I_o=0V$; $V_{CC}=4.5V$ to 5.5V | pin $M\bar{R}$ | - | - | 465.5 | μA |
| | | | pin CP | - | - | 539 | μA |
| | | | pin CEP and Dn | - | - | 122.5 | μA |
| | | | pin CET | - | - | 367.5 | μA |
| | | | pin $P\bar{E}$ | - | - | 147 | μA |

AC Characteristics 1 (Tamb=25°C, GND=0V; $t_r=t_f=6ns$; $C_L=50pF$, unless otherwise specified.)

| Parameter | Symbol | Conditions | Min. | Typ. | Max. | Unit | |
|-------------------------------|-----------|------------------------------------|-------------------------|------|------|------|----|
| SN74HC161 | | | | | | | |
| Propagation delay | t_{pd} | CP to Qn; see Figure8 | $V_{CC}=2.0V$ | - | 61 | 190 | ns |
| | | | $V_{CC}=4.5V$ | - | 22 | 38 | ns |
| | | | $V_{CC}=5.0V; C_L=15pF$ | - | 19 | - | ns |
| | | | $V_{CC}=6.0V$ | - | 18 | 32 | ns |
| | | CP to TC; see Figure8 | $V_{CC}=2.0V$ | - | 69 | 215 | ns |
| | | | $V_{CC}=4.5V$ | - | 25 | 43 | ns |
| | | | $V_{CC}=5.0V; C_L=15pF$ | - | 21 | - | ns |
| | | | $V_{CC}=6.0V$ | - | 20 | 37 | ns |
| | | CET to TC; see Figure9 | $V_{CC}=2.0V$ | - | 33 | 150 | ns |
| | | | $V_{CC}=4.5V$ | - | 12 | 30 | ns |
| | | | $V_{CC}=5.0V; C_L=15pF$ | - | 10 | - | ns |
| | | | $V_{CC}=6.0V$ | - | 10 | 26 | ns |
| High to LOW Propagation delay | t_{PHL} | M \bar{R} to Qn; see Figure10 | $V_{CC}=2.0V$ | - | 63 | 210 | ns |
| | | | $V_{CC}=4.5V$ | - | 23 | 42 | ns |
| | | | $V_{CC}=5.0V; C_L=15pF$ | - | 20 | - | ns |
| | | | $V_{CC}=6.0V$ | - | 18 | 36 | ns |

| | | | | | | | |
|-------------------------------------|------------------|--|--|-----|-----|-----|-----|
| | | M \bar{R} to TC; see Figure10 | V _{CC} =2.0V | - | 63 | 220 | ns |
| | | | V _{CC} =4.5V | - | 23 | 44 | ns |
| | | | V _{CC} =5.0V;CL=15pF | - | 20 | - | ns |
| | | | V _{CC} =6.0V | - | 18 | 37 | ns |
| transition time | t _t | see Figure8 and see Figure9 | V _{CC} =2.0V | - | 19 | 75 | ns |
| | | | V _{CC} =4.5V | - | 7 | 15 | ns |
| | | | V _{CC} =6.0V | - | 6 | 13 | ns |
| pulse width | t _w | CP HIGH or LOW;see Figure8 | V _{CC} =2.0V | 80 | 22 | - | ns |
| | | | V _{CC} =4.5V | 16 | 8 | - | ns |
| | | | V _{CC} =6.0V | 14 | 6 | - | ns |
| | | M \bar{R} LOW; see Figure10 | V _{CC} =2.0V | 80 | 19 | - | ns |
| | | | V _{CC} =4.5V | 16 | 7 | - | ns |
| | | | V _{CC} =6.0V | 14 | 6 | - | ns |
| Recovery time | t _{rec} | M \bar{R} to CP; see Figure10 | V _{CC} =2.0V | 100 | 19 | - | ns |
| | | | V _{CC} =4.5V | 20 | 7 | - | ns |
| | | | V _{CC} =6.0V | 17 | 6 | - | ns |
| Set-up time | t _{su} | Dn to CP; see Figure11 | V _{CC} =2.0V | 80 | 25 | - | ns |
| | | | V _{CC} =4.5V | 16 | 9 | - | ns |
| | | | V _{CC} =6.0V | 14 | 7 | - | ns |
| | | P \bar{E} to CP; see Figure11 | V _{CC} =2.0V | 100 | 30 | - | ns |
| | | | V _{CC} =4.5V | 20 | 11 | - | ns |
| | | | V _{CC} =6.0V | 17 | 9 | - | ns |
| | | CEP,CET to CP; see Figure12 | V _{CC} =2.0V | 170 | 47 | - | ns |
| | | | V _{CC} =4.5V | 34 | 17 | - | ns |
| | | | V _{CC} =6.0V | 29 | 14 | - | ns |
| Hold time | t _h | Dn, P \bar{E} ,CEP,CETto CP; see Figure11,12 | V _{CC} =2.0V | 0 | -14 | - | ns |
| | | | V _{CC} =4.5V | 0 | -5 | - | ns |
| | | | V _{CC} =6.0V | 0 | -4 | - | ns |
| Maximum frequency | f _{MAX} | CP;see Figure8 | V _{CC} =2.0V | 4.6 | 13 | - | MHz |
| | | | V _{CC} =4.5V | 23 | 40 | - | MHz |
| | | | V _{CC} =5.0V;CL=15pF | - | 44 | - | MHz |
| | | | V _{CC} =6.0V | 27 | 48 | - | MHz |
| power dissipation capacitance | C _{PD} | f _i =1MHz; V _i =GND to V _{CC} | - | 33 | - | pF | |
| SN74HCT161 | | | | | | | |
| Propagation delay | t _{pd} | CP to Qn; see Figure8 ^[1] | V _{CC} =4.5V | - | 25 | 43 | ns |
| | | | V _{CC} =5.0V;C _L =15pF | - | 20 | - | ns |
| | | CP to TC; see Figure8 | V _{CC} =4.5V | - | 28 | 48 | ns |
| | | | V _{CC} =5.0V;C _L =15pF | - | 24 | - | ns |
| | | CET to TC; | V _{CC} =4.5V | - | 17 | 35 | ns |



| | | | | | | | |
|-------------------------------|-----------|--|------------------------|----|----|----|-----|
| | | see Figure9 | $V_{CC}=5.0V;C_L=15pF$ | - | 14 | - | ns |
| HIGH to LOW propagation delay | t_{PHL} | \overline{MR} to Qn; see Figure10 | $V_{CC}=4.5V$ | - | 29 | 46 | ns |
| | | | $V_{CC}=5.0V;C_L=15pF$ | - | 25 | - | ns |
| | | \overline{MR} to TC; see Figure10 | $V_{CC}=4.5V$ | - | 30 | 51 | ns |
| | | | $V_{CC}=5.0V;C_L=15pF$ | - | 26 | - | ns |
| transition time | t_t | $V_{CC}=4.5V$;see Figure8,9 | | - | 7 | 15 | ns |
| pulse width | t_w | CP HIGH or LOW; $V_{CC}=4.5V$;see Figure8 | | 16 | 7 | - | ns |
| | | \overline{MR} LOW; $V_{CC}=4.5V$;see Figure10 | | 20 | 10 | - | ns |
| Recovery time | t_{rec} | \overline{MR} CP; $V_{CC}=4.5V$;see Figure10 | | 20 | 6 | - | ns |
| Set-up time | t_{su} | Dn to CP; $V_{CC}=4.5V$;see Figure11 | | 18 | 8 | - | ns |
| | | \overline{PE} to CP; $V_{CC}=4.5V$;see Figure11 | | 30 | 17 | - | ns |
| | | CEP,CET to CP; $V_{CC}=4.5V$;see Figure12 | | 40 | 17 | - | ns |
| Hold time | t_h | Dn, \overline{PE} , CEP, CET to CP; $V_{CC}=4.5V$;see Figure11 | | 0 | -7 | - | ns |
| Maximum frequency | f_{MAX} | CP;see Figure8 | $V_{CC}=4.5V$ | 23 | 41 | - | MHz |
| | | | $V_{CC}=5.0V;C_L=15pF$ | - | 45 | - | MHz |
| power dissipation capacitance | C_{PD} | $f_i=1MHz$;; $V_i=GND$ to $V_{CC}-1.5V$ | | - | 35 | - | pF |

Note:

[1] t_{pd} is the same as t_{PLH} and t_{PHL} .

[2] t_t is the same as t_{THL} and t_{TLH} .

[3] C_{PD} is used to determine the dynamic power dissipation (P_D in uW).

$$P_D=C_{PD} \times V_{CC}^2 \times f_i \times N + \sum(C_L \times V_{CC}^2 \times f_o) \text{ where:}$$

f_i =input frequency in MHz;

f_o =output frequency in MHz;

C_L =output load capacitance in pF;

V_{CC} =supply voltage in V;

N=number of inputs switching;

$\sum(C_L \times V_{CC}^2 \times f)$ =sum of outputs.

AC Characteristics 2 ($T_{amb}=-40^\circ C$ to $+85^\circ C$, $GND=0V$; $t_r=t_f=6ns$; $C_L=50pF$, unless otherwise specified.)

| Parameter | Symbol | Conditions | Min. | Typ. | Max. | Unit | |
|-------------------|----------|--------------------------|---------------|------|------|------|----|
| SN74HC161 | | | | | | | |
| Propagation delay | t_{pd} | CP to Qn; see Figure8 | $V_{CC}=2.0V$ | - | - | 240 | ns |
| | | | $V_{CC}=4.5V$ | - | - | 48 | ns |
| | | | $V_{CC}=6.0V$ | - | - | 41 | ns |
| | | CP to TC; see Figure8 | $V_{CC}=2.0V$ | - | - | 270 | ns |
| | | | $V_{CC}=4.5V$ | - | - | 54 | ns |
| | | | $V_{CC}=6.0V$ | - | - | 46 | ns |

| | | | | | | | |
|-------------------------------------|------------------|---|-----------------------|-----|---|-----|-----|
| | | CET to TC; see Figure9 | V _{CC} =2.0V | - | - | 190 | ns |
| | | | V _{CC} =4.5V | - | - | 38 | ns |
| | | | V _{CC} =6.0V | - | - | 33 | ns |
| High to LOW Propagation delay | t _{PHL} | M \bar{R} to Qn; see Figure10 | V _{CC} =2.0V | - | - | 265 | ns |
| | | | V _{CC} =4.5V | - | - | 53 | ns |
| | | | V _{CC} =6.0V | - | - | 45 | ns |
| | | M \bar{R} to TC; see Figure10 | V _{CC} =2.0V | - | - | 275 | ns |
| | | | V _{CC} =4.5V | - | - | 55 | ns |
| | | | V _{CC} =6.0V | - | - | 47 | ns |
| transition time | t _t | see Figure8 and see Figure9 | V _{CC} =2.0V | - | - | 95 | ns |
| | | | V _{CC} =4.5V | - | - | 19 | ns |
| | | | V _{CC} =6.0V | - | - | 16 | ns |
| pulse width | t _w | CP HIGH or LOW;see Figure8 | V _{CC} =2.0V | 100 | - | - | ns |
| | | | V _{CC} =4.5V | 20 | - | - | ns |
| | | | V _{CC} =6.0V | 17 | - | - | ns |
| | | M \bar{R} LOW; see Figure10 | V _{CC} =2.0V | 100 | - | - | ns |
| | | | V _{CC} =4.5V | 20 | - | - | ns |
| | | | V _{CC} =6.0V | 17 | - | - | ns |
| Recovery time | t _{rec} | M \bar{R} to CP; see Figure10 | V _{CC} =2.0V | 125 | - | - | ns |
| | | | V _{CC} =4.5V | 25 | - | - | ns |
| | | | V _{CC} =6.0V | 21 | - | - | ns |
| Set-up time | t _{su} | Dn to CP; see Figure11 | V _{CC} =2.0V | 100 | - | - | ns |
| | | | V _{CC} =4.5V | 20 | - | - | ns |
| | | | V _{CC} =6.0V | 17 | - | - | ns |
| | | P \bar{E} to CP; see Figure11 | V _{CC} =2.0V | 125 | - | - | ns |
| | | | V _{CC} =4.5V | 25 | - | - | ns |
| | | | V _{CC} =6.0V | 21 | - | - | ns |
| | | CEP,CET to CP; see Figure12 | V _{CC} =2.0V | 215 | - | - | ns |
| | | | V _{CC} =4.5V | 43 | - | - | ns |
| | | | V _{CC} =6.0V | 37 | - | - | ns |
| Hold time | t _h | Dn, P \bar{E} CEP,CET, to CP; see Figure11,12 | V _{CC} =2.0V | 0 | - | - | ns |
| | | | V _{CC} =4.5V | 0 | - | - | ns |
| | | | V _{CC} =6.0V | 0 | - | - | ns |
| Maximum frequency | f _{MAX} | CP;see Figure8 | V _{CC} =2.0V | 3.6 | - | - | MHz |
| | | | V _{CC} =4.5V | 18 | - | - | MHz |
| | | | V _{CC} =6.0V | 21 | - | - | MHz |
| SN74HCT161 | | | | | | | |
| Propagation delay | t _{pd} | CP to Qn; see Figure8 | V _{CC} =4.5V | - | - | 54 | ns |
| | | CP to TC; see Figure8 | V _{CC} =4.5V | - | - | 60 | ns |

| | | | | | | | |
|-------------------------------------|------------------|---|-----------------------|----|---|----|-----|
| | | CET to TC; see Figure9 | V _{CC} =4.5V | - | - | 44 | ns |
| High to LOW propagation delay | t _{PHL} | M \bar{R} to Qn; see Figure10 | V _{CC} =4.5V | - | - | 58 | ns |
| | | M \bar{R} to TC; see Figure10 | V _{CC} =4.5V | - | - | 63 | ns |
| transition time | t _t | V _{CC} =4.5V;see Figure8,9 ^[2] | | - | - | 19 | ns |
| pulse width | t _w | CP HIGH or LOW;V _{CC} =4.5V;see Figure8 | | 20 | - | - | ns |
| | | M \bar{R} LOW;V _{CC} =4.5V;see Figure10 | | 25 | - | - | ns |
| Recovery time | t _{rec} | M \bar{R} to CP;V _{CC} =4.5V;see Figure10 | | 25 | - | - | ns |
| Set-up time | t _{su} | Dn to CP;V _{CC} =4.5V;see Figure11 | | 23 | - | - | ns |
| | | P \bar{E} to CP;V _{CC} =4.5V;see Figure11 | | 38 | - | - | ns |
| | | CEP,CET to CP;V _{CC} =4.5V;see Figure12 | | 50 | - | - | ns |
| Hold time | t _h | Dn, P \bar{E} , CEP, CET to CP; V _{CC} =4.5V;see Figure11 | | 0 | - | - | ns |
| Maximum frequency | f _{MAX} | CP;see Figure8 | V _{CC} =4.5V | 18 | - | - | MHz |

Note:

[1] t_{pd} is the same as t_{PLH} and t_{PHL}.

[2] t_t is the same as t_{THL} and t_{TLH}.

AC Characteristics 3 (T_{amb}=-40°C to +105°C, GND=0V; t_r=t_f=6ns; C_L=50pF, unless otherwise specified.)

| Parameter | Symbol | Conditions | Min. | Typ. | Max. | Unit | |
|-------------------------------------|------------------|------------------------------------|-----------------------|------|------|------|----|
| SN74HC161 | | | | | | | |
| Propagation delay | t _{pd} | CP to Qn; see Figure8 | V _{CC} =2.0V | - | - | 248 | ns |
| | | | V _{CC} =4.5V | - | - | 57 | ns |
| | | | V _{CC} =6.0V | - | - | 48 | ns |
| | | CP to TC; see Figure8 | V _{CC} =2.0V | - | - | 325 | ns |
| | | | V _{CC} =4.5V | - | - | 65 | ns |
| | | | V _{CC} =6.0V | - | - | 55 | ns |
| | | CET to TC; see Figure9 | V _{CC} =2.0V | - | - | 225 | ns |
| | | | V _{CC} =4.5V | - | - | 45 | ns |
| | | | V _{CC} =6.0V | - | - | 38 | ns |
| High to LOW Propagation delay | t _{PHL} | M \bar{R} to Qn; see Figure10 | V _{CC} =2.0V | - | - | 315 | ns |
| | | | V _{CC} =4.5V | - | - | 63 | ns |
| | | | V _{CC} =6.0V | - | - | 54 | ns |
| | | M \bar{R} to TC; see Figure10 | V _{CC} =2.0V | - | - | 330 | ns |
| | | | V _{CC} =4.5V | - | - | 66 | ns |

| | | | | | | | |
|-------------------------------|-----------|---|---------------|-----|---|-----|-----|
| | | | $V_{CC}=6.0V$ | - | - | 56 | ns |
| transition time | t_t | see Figure8 and see Figure9 | $V_{CC}=2.0V$ | - | - | 110 | ns |
| | | | $V_{CC}=4.5V$ | - | - | 22 | ns |
| | | | $V_{CC}=6.0V$ | - | - | 19 | ns |
| | | | | | | | |
| pulse width | t_w | CP HIGH or LOW;see Figure8 | $V_{CC}=2.0V$ | 120 | - | - | ns |
| | | | $V_{CC}=4.5V$ | 24 | - | - | ns |
| | | | $V_{CC}=6.0V$ | 20 | - | - | ns |
| | | \overline{MR} LOW; see Figure10 | $V_{CC}=2.0V$ | 120 | - | - | ns |
| | | | $V_{CC}=4.5V$ | 24 | - | - | ns |
| | | | $V_{CC}=6.0V$ | 20 | - | - | ns |
| Recovery time | t_{rec} | \overline{MR} to CP; see Figure10 | $V_{CC}=2.0V$ | 150 | - | - | ns |
| | | | $V_{CC}=4.5V$ | 30 | - | - | ns |
| | | | $V_{CC}=6.0V$ | 26 | - | - | ns |
| Set-up time | t_{su} | Dn to CP; see Figure11 | $V_{CC}=2.0V$ | 120 | - | - | ns |
| | | | $V_{CC}=4.5V$ | 24 | - | - | ns |
| | | | $V_{CC}=6.0V$ | 20 | - | - | ns |
| | | \overline{PE} to CP; see Figure11 | $V_{CC}=2.0V$ | 150 | - | - | ns |
| | | | $V_{CC}=4.5V$ | 30 | - | - | ns |
| | | | $V_{CC}=6.0V$ | 26 | - | - | ns |
| | | CEP,CET to CP; see Figure12 | $V_{CC}=2.0V$ | 255 | - | - | ns |
| | | | $V_{CC}=4.5V$ | 51 | - | - | ns |
| | | | $V_{CC}=6.0V$ | 43 | - | - | ns |
| Hold time | t_h | Dn, \overline{PE} CEP,CET, to CP; see Figure11,12 | $V_{CC}=2.0V$ | 0 | - | - | ns |
| | | | $V_{CC}=4.5V$ | 0 | - | - | ns |
| | | | $V_{CC}=6.0V$ | 0 | - | - | ns |
| Maximum frequency | f_{MAX} | CP;see Figure8 | $V_{CC}=2.0V$ | 3.0 | - | - | MHz |
| | | | $V_{CC}=4.5V$ | 15 | - | - | MHz |
| | | | $V_{CC}=6.0V$ | 18 | - | - | MHz |
| SN74HCT161 | | | | | | | |
| Propagation delay | t_{pd} | CP to Qn; see Figure8 ^[1] | $V_{CC}=4.5V$ | - | - | 65 | ns |
| | | CP to TC; see Figure8 | $V_{CC}=4.5V$ | - | - | 72 | ns |
| | | CET to TC; see Figure9 | $V_{CC}=4.5V$ | - | - | 53 | ns |
| High to LOW propagation delay | t_{PHL} | \overline{MR} to Qn; see Figure10 | $V_{CC}=4.5V$ | - | - | 69 | ns |
| | | \overline{MR} to TC; see Figure10 | $V_{CC}=4.5V$ | - | - | 77 | ns |
| transition time | t_t | $V_{CC}=4.5V$;see Figure8,9 ^[2] | | - | - | 22 | ns |
| pulse width | t_w | CP HIGH or LOW; $V_{CC}=4.5V$;see Figure8 | | 24 | - | - | ns |
| | | \overline{MR} LOW; $V_{CC}=4.5V$;see Figure10 | | 30 | - | - | ns |

| | | | | | | |
|-------------------|-----------|---|---------------|----|---|-----|
| Recovery time | t_{rec} | $M\bar{R}$ to CP; $V_{CC}=4.5V$; see Figure10 | 30 | - | - | ns |
| Set-up time | t_{su} | Dn to CP; $V_{CC}=4.5V$; see Figure11 | 27 | - | - | ns |
| | | $P\bar{E}$ to CP; $V_{CC}=4.5V$; see Figure11 | 45 | - | - | ns |
| | | CEP, CET to CP; $V_{CC}=4.5V$; see Figure12 | 60 | - | - | ns |
| Hold time | t_h | Dn, $P\bar{E}$, CEP, CET to CP; $V_{CC}=4.5V$; see Figure11 | 0 | - | - | ns |
| Maximum frequency | f_{MAX} | CP; see Figure8 | $V_{CC}=4.5V$ | 15 | - | MHz |

Note:

[1] t_{pd} is the same as t_{PLH} and t_{PHL} .

[2] t_t is the same as t_{THL} and t_{TLH} .

Testing Circuit

AC Testing Circuit

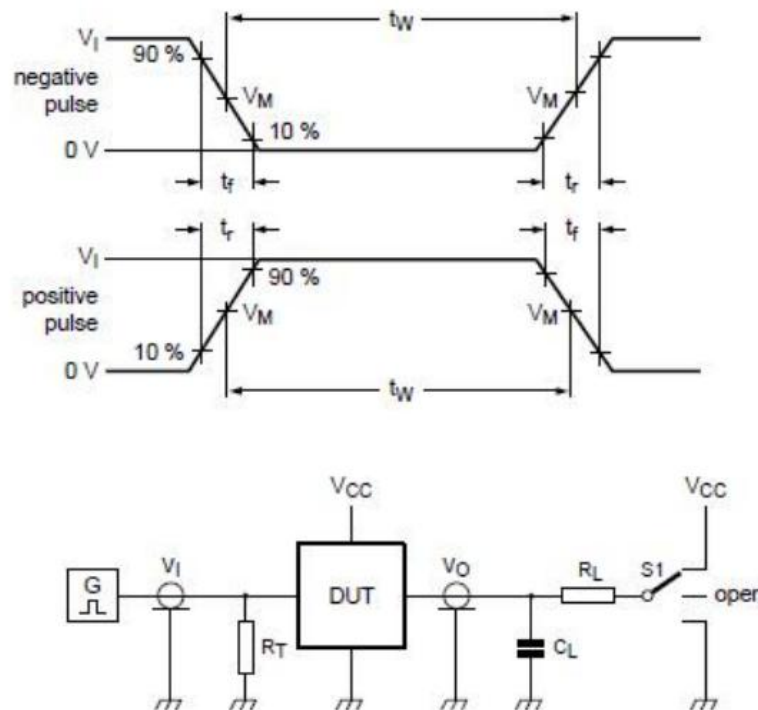


Figure 7. Test circuit for measuring switching times

Definitions for test circuit:

C_L =Load capacitance including jig and probe capacitance.

R_T =Termination resistance should be equal to the output impedance Z_o of the pulse generator.

R_L =Load resistance

S1=Test selection switch

AC Testing Waveforms

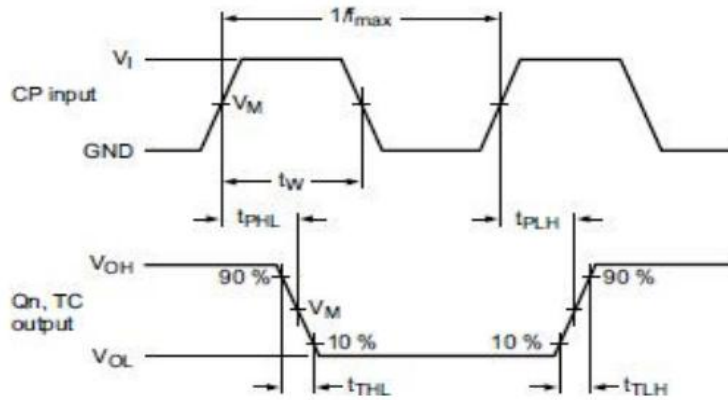


Figure 8. The clock (CP) to outputs (Qn, TC) propagation delays, pulse width, output transition times and maximum frequency

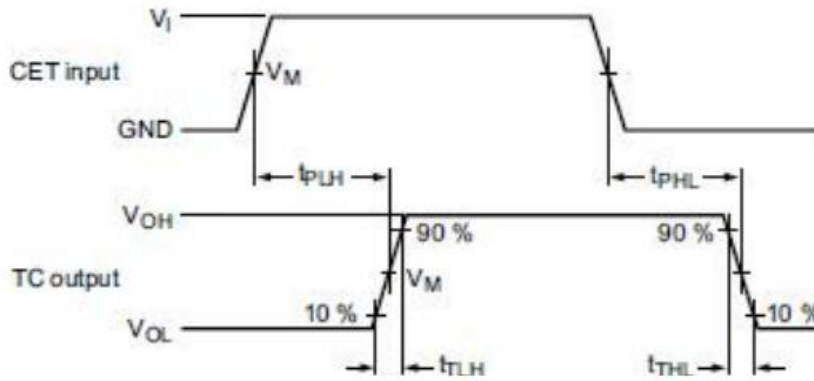


Figure 9. The count enable carry input (CET) to terminal count output (TC) propagation delays and output transition times

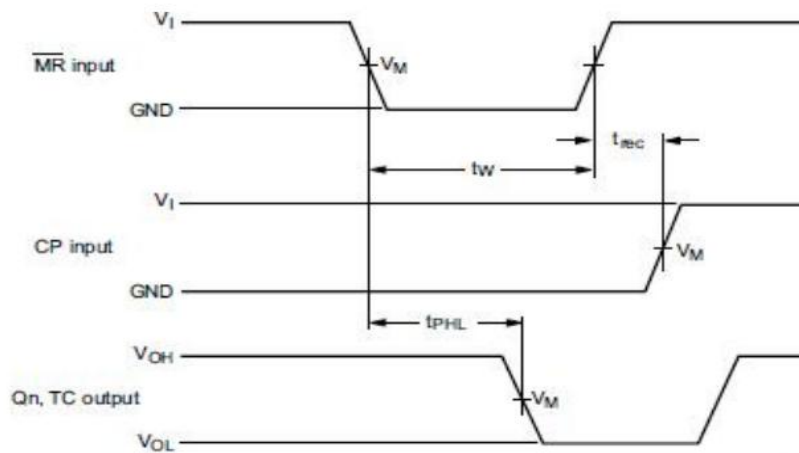


Figure 10. The master reset (\overline{MR}) pulse width, master reset to output (Qn, TC) propagation delays, and the master reset to clock (CP) recovery times

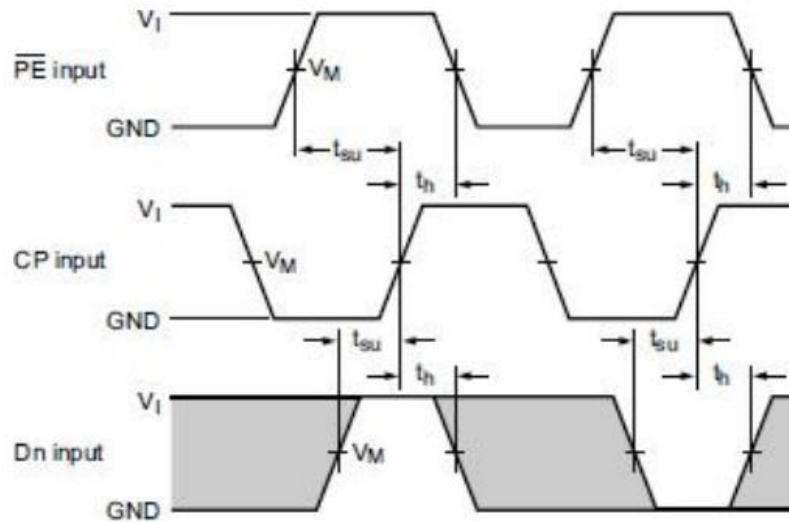


Figure 11. The data input (Dn) and parallel enable input (\overline{PE}) set-up and hold times

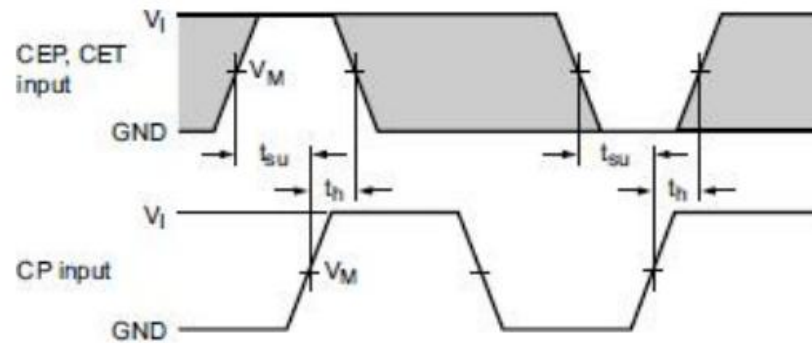


Figure 12. The count enable input (CEP) and count enable carry input (CET) set-up and hold times

Measurement Points

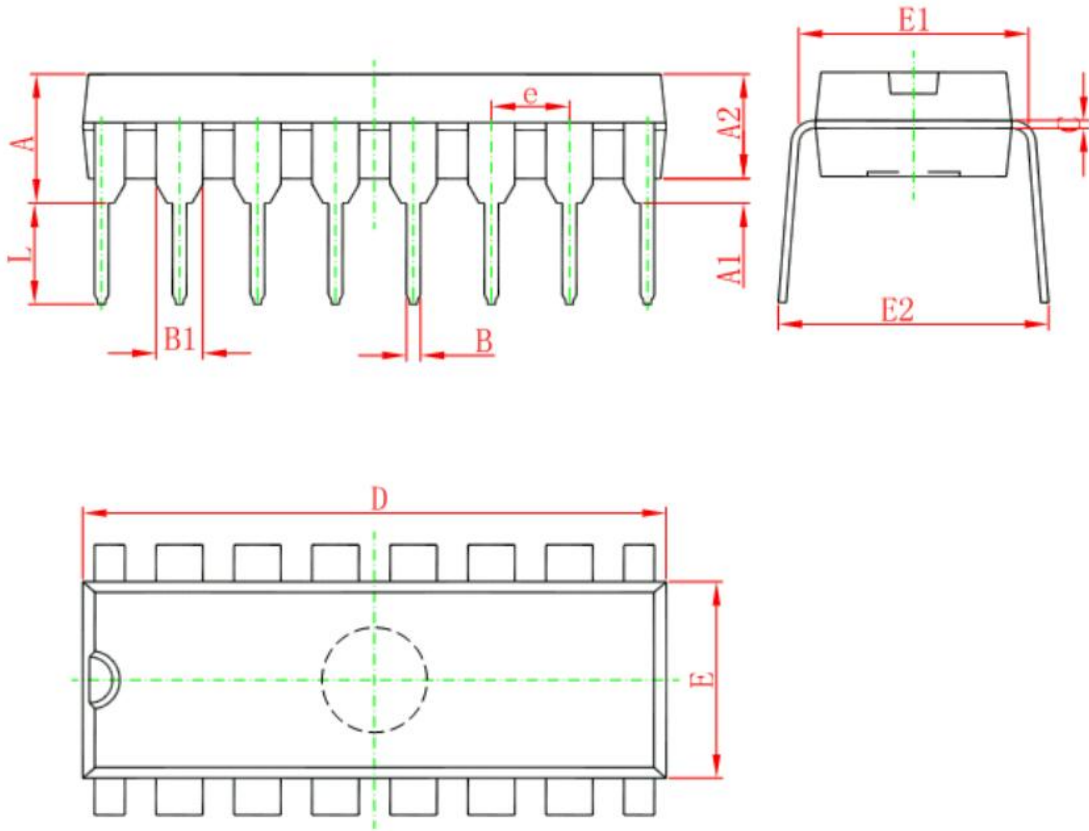
| Type | Input | | Output |
|------------|-----------------|---------------------|---------------------|
| | V_I | V_M | V_M |
| SN74HC161 | GND to V_{CC} | $0.5 \times V_{CC}$ | $0.5 \times V_{CC}$ |
| SN74HCT161 | GND to 3V | 1.3V | 1.3V |

Test Data

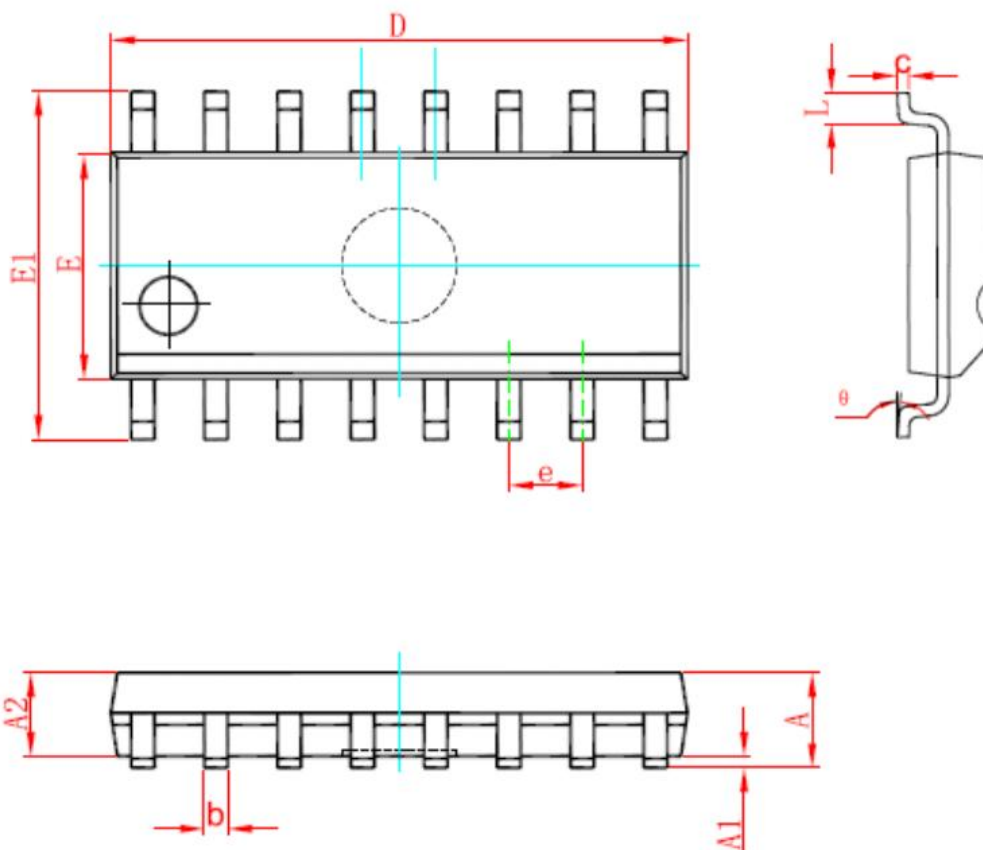
| Type | Input | | Load | | S1 position |
|------------|----------|------------|------------|-------------|--------------------|
| | V_I | t_r, t_f | C_L | R_L | t_{PHL}, t_{PLH} |
| SN74HC161 | V_{CC} | 6.0ns | 15pF, 50pF | 1K Ω | open |
| SN74HCT161 | 3.0V | 6.0ns | 15pF, 50pF | 1K Ω | open |

Package Information

DIP16

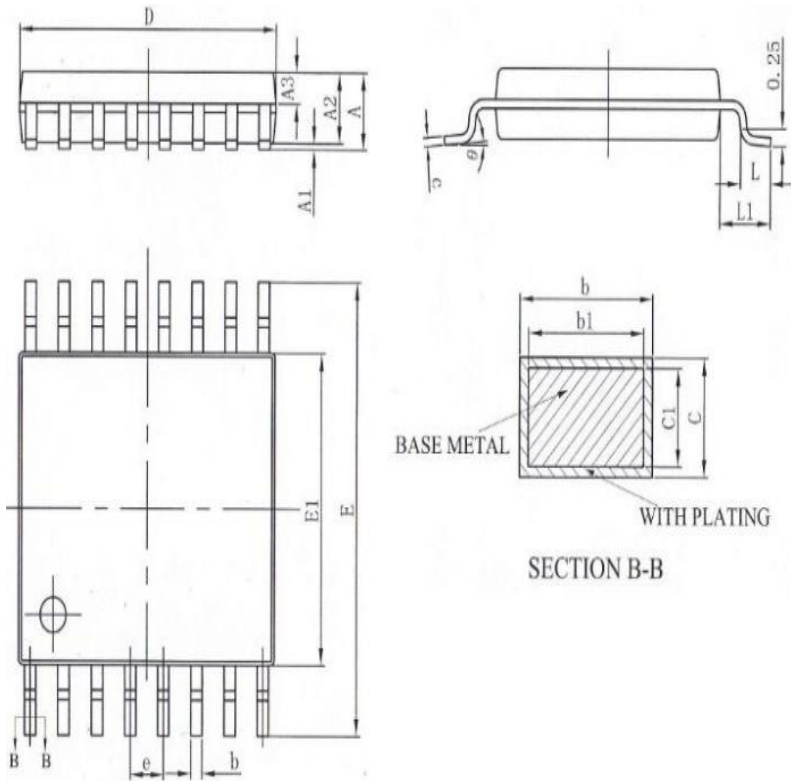


| Symbol | Dimensions In Millimeters | | Dimensions In Inches | |
|--------|---------------------------|--------|----------------------|-------|
| | Min | Max | Min | Max |
| A | 3.710 | 4.310 | 0.146 | 0.170 |
| A1 | 0.510 | | 0.020 | |
| A2 | 3.200 | 3.600 | 0.126 | 0.142 |
| B | 0.380 | 0.570 | 0.015 | 0.022 |
| B1 | 1.524(BSC) | | 0.060(BSC) | |
| C | 0.204 | 0.360 | 0.008 | 0.014 |
| D | 18.800 | 19.200 | 0.740 | 0.756 |
| E | 6.200 | 6.600 | 0.244 | 0.260 |
| E1 | 7.320 | 7.920 | 0.288 | 0.312 |
| e | 2.540(BSC) | | 0.100(BSC) | |
| L | 3.000 | 3.600 | 0.118 | 0.142 |
| E2 | 8.400 | 9.000 | 0.331 | 0.354 |



| Symbol | Dimensions In Millimeters | | Dimensions In Inches | |
|--------|---------------------------|--------|----------------------|-------|
| | Min | Max | Min | Max |
| A | 1.350 | 1.750 | 0.053 | 0.069 |
| A1 | 0.100 | 0.250 | 0.004 | 0.010 |
| A2 | 1.350 | 1.550 | 0.053 | 0.061 |
| b | 0.330 | 0.510 | 0.013 | 0.020 |
| C | 0.170 | 0.250 | 0.007 | 0.010 |
| D | 9.800 | 10.200 | 0.386 | 0.402 |
| E | 3.800 | 4.000 | 0.150 | 0.157 |
| E1 | 5.800 | 6.200 | 0.228 | 0.244 |
| e | 1.270(BSC) | | 0.050(BSC) | |
| L | 0.400 | 1.270 | 0.016 | 0.050 |
| θ | 0° | 8° | 0° | 8° |

TSSOP16



| SYMBOL | MILLIMETER | | |
|----------|------------|------|------|
| | MIN | NOM | MAX |
| A | - | - | 1.20 |
| A1 | 0.05 | - | 0.15 |
| A2 | 0.90 | 1.00 | 1.05 |
| A3 | 0.39 | 0.44 | 0.49 |
| b | 0.20 | - | 0.28 |
| b1 | 0.19 | 0.22 | 0.25 |
| c | 0.13 | - | 0.17 |
| cl | 0.12 | 0.13 | 0.14 |
| D | 4.90 | 5.00 | 5.10 |
| E | 6.20 | 6.40 | 6.60 |
| E1 | 4.30 | 4.40 | 4.50 |
| e | 0.65BSC | | |
| L | 0.45 | 0.60 | 0.75 |
| L1 | 1.00BSC | | |
| θ | 0 | - | 8° |

Statements And Notes

| Part name | Hazardous substances or Elements | | | | | | | | | |
|-------------------------|--|-------------------------------|-------------------------------|-------------------------------|--------------------------|--------------------------------|-------------------|------------------------|---------------------------|----------------------|
| | Lead and lead compounds | Mercury and mercury compounds | Cadmium and cadmium compounds | Hexavalent chromium compounds | Polybrominated biphenyls | Polybrominated biphenyl ethers | Dibutyl phthalate | Butyl benzyl phthalate | Di-2-ethylhexyl phthalate | Diisobutyl phthalate |
| Lead frame | ○ | ○ | ○ | ○ | ○ | ○ | ○ | ○ | ○ | ○ |
| Plastic resin | ○ | ○ | ○ | ○ | ○ | ○ | ○ | ○ | ○ | ○ |
| Chip | ○ | ○ | ○ | ○ | ○ | ○ | ○ | ○ | ○ | ○ |
| The lead | ○ | ○ | ○ | ○ | ○ | ○ | ○ | ○ | ○ | ○ |
| Plastic sheet installed | ○ | ○ | ○ | ○ | ○ | ○ | ○ | ○ | ○ | ○ |
| explanation | ○: Indicates that the content of hazardous substances or elements in the detection limit of the following the SJ/T11363-2006 standard. ×: Indicates that the content of hazardous substances or elements exceeding the SJ/T11363-2006 Standard limit requirements | | | | | | | | | |

Statement:

- ✧ Shenzhen xinbole electronics co., ltd. reserves the right to change the product specifications, without notice!
Before placing an order, the customer needs to confirm whether the information obtained is the latest version, and verify the integrity of the relevant information.
- ✧ Any semiconductor product is liable to fail or malfunction under certain conditions, and the buyer shall be responsible for complying with safety standards in the system design and whole machine manufacturing using Shenzhen xinbole electronics co., ltd products, and take appropriate security measures to avoid the potential risk of failure may result in personal injury or property losses of the situation occurred!
- ✧ Product performance is never ending, Shenzhen xinbole electronics co., ltd will be dedicated to provide customers with better performance, better quality of integrated circuit products.

X-ON Electronics

Largest Supplier of Electrical and Electronic Components

Click to view similar products for [Counter ICs](#) category:

Click to view products by [XBLW](#) manufacturer:

Other Similar products are found below :

[CD4018BE](#) [CD4033BE](#) [CD4060BE](#) [CD4040BE](#) [NLV14040BDR2G](#) [RFDIP1607ALM9T21](#) [RFDIP1606L708D1T](#) [RFTIP2510T12A8Q1C](#)
[74HC161DT](#) [CD4028BM/TR](#) [CD4060DM/TR](#) [CD4022BE](#) [CD4060DMT/TR](#) [CD4020BE](#) [CD4060BMT/TR](#) [74HC192M/TR](#)
[CD4020BMT/TR](#) [CD4017CMT/TR](#) [74HC193M/TR](#) [CD4017CM/TR](#) [AiP74HC193SA16.TB](#) [CD4518BM/TR](#) [CD4060TA16.TB](#) [CD4060DE](#)
[CD4017CN](#) [CD4017BMT/TR](#) [U74HC4060G-S16-R](#) [CD4017SA.TB](#) [XD74LS160](#) [CD4017BM-MS](#) [CD4022BM/TR](#) [CD4022BMT/TR](#)
[CD4028BDRG](#) [CD4060BDRG](#) [CD4017DA.TB](#) [CD4520BDRG](#) [CD4520BM\(LX\)](#) [CD4518BM\(LX\)](#) [SN74HC393DR\(LX\)](#) [SN74HC393N\(LX\)](#)
[CD4060BM\(LX\)](#) [CD4060BE\(LX\)](#) [CD4518BE\(LX\)](#) [CD4520BE\(LX\)](#) [SN74HC192N\(XBLW\)](#) [CD4040BM\(LX\)](#) [CD4026BM\(LX\)](#)
[CD40103BDR\(LX\)](#) [SN74LS192DR\(LX\)](#) [SN74HC161DR \(LX\)](#)